

## Product datasheet for MR215871L1

### Sptssb (NM\_001164210) Mouse Tagged Lenti ORF Clone

#### Product data:

Product Type:	Expression Plasmids
Product Name:	Sptssb (NM_001164210) Mouse Tagged Lenti ORF Clone
Tag:	Myc-DDK
Symbol:	Sptssb
Synonyms:	1110032A04Rik; ADMP; Sssptb
Mammalian Cell Selection:	None
Vector:	pLenti-C-Myc-DDK (PS100064)
E. coli Selection:	Chloramphenicol (34 ug/mL)
ORF Nucleotide Sequence:	The ORF insert of this clone is exactly the same as(MR215871).
Restriction Sites:	SgfI-MluI
Cloning Scheme:	

Cloning sites used for ORF Shuttling:



\* The last codon before the Stop codon of the ORF.

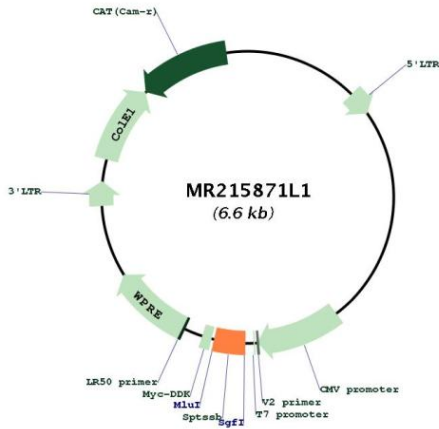
ACCN:	NM_001164210
ORF Size:	228 bp



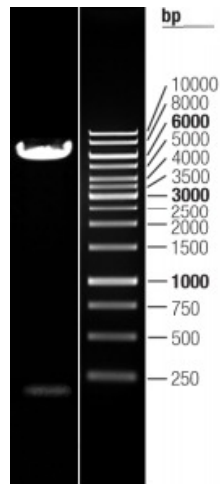
[View online >](#)

<b>OTI Disclaimer:</b>	The molecular sequence of this clone aligns with the gene accession number as a point of reference only. However, individual transcript sequences of the same gene can differ through naturally occurring variations (e.g. polymorphisms), each with its own valid existence. This clone is substantially in agreement with the reference, but a complete review of all prevailing variants is recommended prior to use. <a href="#">More info</a>
<b>OTI Annotation:</b>	This clone was engineered to express the complete ORF with an expression tag. Expression varies depending on the nature of the gene.
<b>Components:</b>	The ORF clone is ion-exchange column purified and shipped in a 2D barcoded Matrix tube containing 10ug of transfection-ready, dried plasmid DNA (reconstitute with 100 ul of water).
<b>Reconstitution Method:</b>	<ol style="list-style-type: none"><li>1. Centrifuge at 5,000xg for 5min.</li><li>2. Carefully open the tube and add 100ul of sterile water to dissolve the DNA.</li><li>3. Close the tube and incubate for 10 minutes at room temperature.</li><li>4. Briefly vortex the tube and then do a quick spin (less than 5000xg) to concentrate the liquid at the bottom.</li><li>5. Store the suspended plasmid at -20°C. The DNA is stable for at least one year from date of shipping when stored at -20°C.</li></ol>
<b>RefSeq:</b>	<a href="#">NM_001164210.1</a>
<b>RefSeq Size:</b>	1786 bp
<b>RefSeq ORF:</b>	231 bp
<b>Locus ID:</b>	66183
<b>UniProt ID:</b>	<a href="#">Q925E8</a>
<b>Cytogenetics:</b>	3 E2
<b>Gene Summary:</b>	Stimulates the activity of serine palmitoyltransferase (SPT). The composition of the serine palmitoyltransferase (SPT) complex determines the substrate preference, complexes with this subunit showing a clear preference for longer acyl-CoAs. The SPTLC1-SPTLC2-SPTSSB complex shows a strong preference for C18-CoA substrate, while the SPTLC1-SPTLC3-SPTSSB isozyme displays an ability to use a broader range of acyl-CoAs, without apparent preference. [UniProtKB/Swiss-Prot Function]

Product images:



Circular map for MR215871L1



Double digestion of MR215871L1 using Sgfl and MluI