

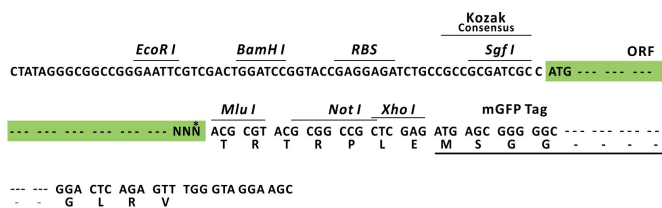
Product datasheet for MR215861L4

Terb1 (NM_180958) Mouse Tagged Lenti ORF Clone

Product data:

Product Type:	Expression Plasmids
Product Name:	Terb1 (NM_180958) Mouse Tagged Lenti ORF Clone
Tag:	mGFP
Symbol:	Terb1
Synonyms:	4930532D21Rik; BB085179; Ccdc79
Mammalian Cell Selection:	Puromycin
Vector:	pLenti-C-mGFP-P2A-Puro (PS100093)
E. coli Selection:	Chloramphenicol (34 ug/mL)
ORF Nucleotide Sequence:	The ORF insert of this clone is exactly the same as(MR215861).
Restriction Sites:	SgfI-MluI
Cloning Scheme:	

Cloning sites used for ORF Shuttling:



* The last codon before the Stop codon of the ORF.

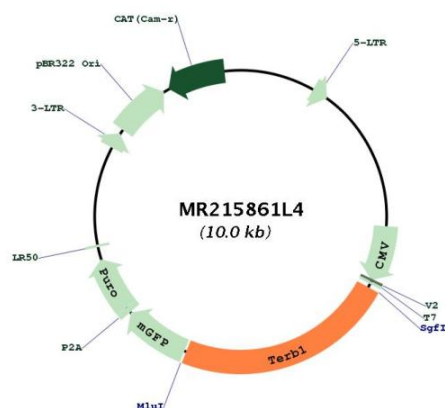
ACCN:	NM_180958
ORF Size:	2304 bp



[View online »](#)

OTI Disclaimer:	The molecular sequence of this clone aligns with the gene accession number as a point of reference only. However, individual transcript sequences of the same gene can differ through naturally occurring variations (e.g. polymorphisms), each with its own valid existence. This clone is substantially in agreement with the reference, but a complete review of all prevailing variants is recommended prior to use. More info
OTI Annotation:	This clone was engineered to express the complete ORF with an expression tag. Expression varies depending on the nature of the gene.
Components:	The ORF clone is ion-exchange column purified and shipped in a 2D barcoded Matrix tube containing 10ug of transfection-ready, dried plasmid DNA (reconstitute with 100 ul of water).
Reconstitution Method:	<ol style="list-style-type: none"> 1. Centrifuge at 5,000xg for 5min. 2. Carefully open the tube and add 100ul of sterile water to dissolve the DNA. 3. Close the tube and incubate for 10 minutes at room temperature. 4. Briefly vortex the tube and then do a quick spin (less than 5000xg) to concentrate the liquid at the bottom. 5. Store the suspended plasmid at -20°C. The DNA is stable for at least one year from date of shipping when stored at -20°C.
RefSeq:	NM_180958.3 , NP_851289.2
RefSeq Size:	2950 bp
RefSeq ORF:	2307 bp
Locus ID:	320022
UniProt ID:	Q8C0V1
Cytogenetics:	8 D3
Gene Summary:	<p>Meiosis-specific telomere-associated protein involved in meiotic telomere attachment to the nucleus inner membrane, a crucial step for homologous pairing and synapsis (PubMed:24885367, PubMed:24413433, PubMed:26548954). Component of the MAJIN-TERB1-TERB2 complex, which promotes telomere cap exchange by mediating attachment of telomeric DNA to the inner nuclear membrane and replacement of the protective cap of telomeric chromosomes: in early meiosis, the MAJIN-TERB1-TERB2 complex associates with telomeric DNA and the shelterin/telosome complex. During prophase, the complex matures and promotes release of the shelterin/telosome complex from telomeric DNA (PubMed:26548954). In the MAJIN-TERB1-TERB2 complex, TERB1 probably mediates association with the shelterin/telosome complex via interaction with TERF1, promoting priming telomeric DNA attachment' (PubMed:26548954). Promotes telomere association with the nuclear envelope and deposition of the SUN-KASH/LINC complex (PubMed:24885367, PubMed:24413433). Also recruits cohesin to telomeres to develop structural rigidity (PubMed:24413433).[UniProtKB/Swiss-Prot Function]</p>

Product images:



Circular map for MR215861L4