

Product datasheet for **MR215843**

Ssh2 (NM_177710) Mouse Tagged ORF Clone

Product data:

Product Type:	Expression Plasmids
Product Name:	Ssh2 (NM_177710) Mouse Tagged ORF Clone
Tag:	Myc-DDK
Symbol:	Ssh2
Synonyms:	mSSH-2L; SSH-2; SSH-2L
Mammalian Cell Selection:	Neomycin
Vector:	pCMV6-Entry (PS100001)
E. coli Selection:	Kanamycin (25 ug/mL)
ORF Nucleotide Sequence:	>MR215843 representing NM_177710 Red=Cloning site Blue=ORF Green=Tags(s)

TTTTGTAATACGACTCACTATAGGGCGGCCGGAATTCGTCGACTGGATCCGGTACCGAGGAGATCTGCC
GCC**CGATCGCC**

ATGGCTTTGGTCACGGTCCAGCGGTGCGCTACCCCGAGCACCTCCAGCCCTTGCCTCGGAGGCCG
ACAGTGGGAGGAGGAATGCCGGTCACAGCCAGAACATCAGCGAGAGCTTCTAACTGTCAAAGGTGC
TGCCCTTTTCTACCACGAGGGAATGGCTCGTCTACACCAAGAGTCAGCCACAGACGCAACAAGCATGCA
GGTGATCTCCAACAGCATCTTCAAGCAATGTTTCATATTACTCCGCCAGAACATAAAGGCTGGCTG
TAAGACTGAAAGTACTTACAAAACCGAACACGCTATATGGTCGTGGTTTCAACTAATGGTAGACAAGA
CACTGAAGAAAGCATTGTCCTGGGAATGGATTTTCTTCTAATGACAGTAGCACTTGTACCATGGGCTTG
GTCTTGCCTCTCTGGAGTGACACCCTAATTCATTTGGATGGTGGTGGTTACAGCTATCAACAGATA
ACAGAGTTCACATATTCAAACCTGTATCTGTGCAAGCAATGTGGTCTGCACTACAGAGTTTGACAAGGC
TTGTGAAGTGGCCAGAATGCATAACTACTATCCAGGCAGCCTTTTCTCACTTGGGTGAGTTATTACGAG
AGCCATATCAACTCAGATCAGTCTCAGTCAATGAGTGGAAATGCTATGCAGGATGTGAGTCTCATCGGC
CTGACTCTCCAGCCCTTTCACAGACATACCAACTGAACGTGAGCGAACAGAAAGGCTTATTAAGACTAA
ATTAAGGGAGATCATGATGCAAAAGGATTTGGAGAATATCACCTCAAAGAGATACGCACGGAGCTGGAG
ATGCAGATGGTGTCAACTTGCAGAAATTAAGGAATTCATAGATAATGAAATGATCGTGATCCTTGGTC
AGATGGACAGTCCACACAGATATTTGAGCATGTATTCTGGGCTCAGAATGGAATGCCTCGAACTTAGA
GGACTTGACAACCGAGGGGTACGGTATATCTTGAATGTTACTCGAGAGATAGATAAATCTTCCCTGGA
GTCTTTGAGTATCATAACATTTCGAGTATATGATGAAGAAGCAACAGATCTCCTGGCTTACTGGAATGACA
CTTACAAATTCATCTCTAAAGCAAAGAAACATGGATCTAAATGTCTTGTGCACTGCAAAATGGGGGTGAG
TCGCTCAGCCTCCACTGTGATTGCCTATGCAATGAAGGAGTATGGATGGAATCTGGATCGAGCCTATGAC
TATGTGAAGGAAAGACGAACGGTGACCAAGCCTAACCCAGCTTCATGAGACAACGGAAGAATACCAAG
GGATCTTGCTGGCCAGCAAACAGCGGCATAACAACTCTGGAGATCTCATTGAGATAGTGACCTTTCAGA
CCACCAGAACCCATCTGTAACCTGGGCTCGAGCTCAACAAGAAGGAGATGACCAGTCCAGCAGACCAG



[View online »](#)

ATCGCTGAGGTGAAGACTGTGGAGAACCTTGCTGCCATGCCTACCGTCTTTATGGAACATGTGGTCCCAC
AAGATGCAAAATCAGAAAGGACTACACACCAAAGAAAGAGTCATCTGCTTGGAGTTTTCTTACAAGAGTT
TCGTGCCGGACAGATTGAAGATGAATTAATTAATGACATCAATGGATGCTCATCAGGGTGTGTCTC
AGTGAATCAAACTCCCTCTTGACAACCTGCCATGCGTCTAAAGCCTTACTCCAACCTGGACAGGCCCCAG
ACATTGCCAACAGTTCCAGACTTAGCTGTGGAAGATCTGGAGACAGACGCACTGAAAGCAGACATGAA
TGTCACCTACTGCCAATGGAAGAGTTGACATCTCGACTGAAAGACCTCCCATGTCACCTGATCTGGAG
TCACCAAGCCCCAAGCCAGTTGCCAAGCTGCCATCTCAGATTTTAGTACAGATCGTATTGACTTTTTTA
GTGCCCTGGAGAAATTTGTAGAGCTTTCTCAAGAAACCCGGTCTCGGTCTTTTTCTCACTCAAGGATAGA
AGAATTAGGTGGAGGAAGGAGTGAGGGCTGTCGTTTTGTCAGTGATAGAAGTGGCAGCTTCAGAAATGGCA
GCTGATGACCAGAGAAGCAGCTCTTTGAGTAATACGCCCCACGCCTCTGAAGAGTCTTCTGTGGATGAGG
ACCAGTCGAAGGCAATCACCGAACTTGTGAGCCAGACATCATCATGCAATCTCACTCAGAAAATGCAAT
TTCAGTCAAAGAAATTTGACTGAAATTTAGTCCATTAGTCAAGGAGTTGGGCAGTTTCAGTTAAAAGGA
GACATCTCTCTAACCCATGCCACACCAAAGAAGAGCACCATTATGAGCTGCCCTGGAGAGGGTGC
CAGCCCCGTGAGAGCAAACCTGGACATTGGGAGCAGGATGAGAGTTTCTGTAGTGTCCAGCCAGAAGTGC
TAGAGACTCAGGGAAGTGTGCCCGGAGGAAGGCTGTCTGACCACACACTCATCCACAGCAGACTTGGAA
GAAGAAGAACCAGTTGAGGGGGAACATGACTGGGGCCAGGGATGCACTCTGGTGCTAAGTGGTGCCTG
GGTCTGTGAGGGCAGCCACCCTGGAGTTTGAAGAGCGCTTGCACAAGAGCAAGAGAACCATGGTACAGC
CTCTGCAGGCCCCACATTATCCAATCGCAAAAACCTCTAAGAATGATTCTTCTGTGGCAGACTTAATGCCA
AAATGGAAAAGTGATGAAACTACCCAGAACATTCATTTTTCTCAAAGAAGCCGAGCCGAGCAAGGGTA
AAGGGAATGCAGTGGTTCTGAAGCCGGATCACTATCCCAGTGTGAGCGTAATCCCACCATGCCAGACTG
TGAGCTGCTGGAGCATATTCTTCCGGCTCCTCAGGACTGCCTAGGGTCAAGTGAAGTAAGAAG
CAGGAAGGAGACCTAAAGAAGCAGAGGGCTGTGGTTCAAACAGGAATGTGACACACAGGCCATCTTCT
TCCCCCTCCCAAGAAAATAGAAATCATTGAGTATACGCCGACAGTTACATCACTGGGTACACCCGAGCC
AGGAGGTGAGGCGACACCAGCAAGAGGGTGAGAAACAAGGACTGAGGAAAGTGAAGATGGAGCAGTCT
ATCACTATGTTTTGTGCGCTGGATGAAAATCTGAACAGGACTCTGGAGCCAGTCAAGTTTCTCTGCATC
CCCAAGTGTACCTCTGCCTCATTCTTCTCAGAGTGTGACAGGCCCGCTGACCCAAACCCTATGTTAAG
TAGCCCCGAAAGCAAGGGGACTGCCATCCACACCCTTCAAGACAGCAGCACCTTTTGTGAGTGCAGT
ACCCAGGGAGCATCTTTCAGCTTGGATTATTTGCTTCCCAGTCTGTGGTTACCTGGAAGGCTGCACAG
AGCAAAGCAGTGCCTACTGACAAATGAACTGTCTCCAGAGCAGGCTAGCTGGGAGGACAGCCGGGGCATT
CCTCTCCAGTGGTGTGGAATGGCACACACATCTCCCAATTAACGAAGACCTAAGTTAATTAAC
AAACTTGGTGACAGTGTGGTGTGTACAGAAAAACTGGACCCGTACCTGAAGCTGTAGAATCCCAC
ATAGCTCTAGTAGTGAATAAAGAGATCTCAGCCACAGCCGGTGGTGTGGTGAAGGAGCATGCTAAAGA
AATTGAGTCTCGAGTGATCTTCCAGGCAGGTTTTCCAAAACATCCCAAATGAAGCGCTCAGCTTCCTT
GCCAAGTTGGGTTACCTGGACCTTTGTAAGACTACTTACCAGATAGAGAGCTTGTCTCCTCAGAATCCC
CTCATCTCAAATTTGCTTCCAGCCCTTCTCAGAACAGACTCAGGCATGCATGCCTTGTGAGGATGAGCC
CTCAGAAAGCGCAGGTGCCAGCAGAACCCACAGCCACCAAGTATTCTGTAGAGCAACTCAAACATCA
GAGTGTATTGTGACAGCAAACAGTGGAGAGGCCAGTGTGAGTATGCCAAAGAGTTTGGTTACAGTC
AGCAGTGTGCTCCCAAGGCAAGACCAGAATTGACTAGTCTGAAGGAGGCCCTTCTTGTACAGAC
ACAGGGTCTGCAGTACACAGGCCCTCTCCAGGGCTGGCTGTGGCGCCCGTCAAGCAACATGGCAGAACT
CACCCCTTAGAAGACTGAAAAGAGCAAATGATAAAAAACGGACAACCAACCCTTCTATAACACCATG

ACGCGTACGCGGCCGCTCGAGCAGAAACTCATCTCAGAAGAGGATCTGGCAGCAAATGATATCTGGATT
ACAAGGATGACGACGATAAGGTTAA

Protein Sequence: >MR215843 representing NM_177710
 Red=Cloning site Green=Tags(s)

MALVTVQRSPSTTSSPCASEADSGEEECRSQPRISIESFLT VKGAALFLPRNGSSTPRVSHRRNKHA
 GD LQQHLQAMFILLRPEDNIRLAVRLESTYQNRTRYMVVVSTNGRQDTEESIVLGMDFSSNDSSTCTMGL
 VLPLWSDTLIHL DGDGGF SVSTDNRVHIFKPVSVQAMWSALQSLHKACEVARMHNYYPGSLFLT WVSYYE
 SHINSQSSVNEWNAMQDVQSHRPDSPALFTDIPTERERTERL IKTKLREIMMQKDLENITSKEIRTELE
 MQMVCNLREFKEFIDNEMIVILGQMDSPQTQIFEHVFLGSEWNASNLEDLQNRGVRYILNVTREIDNFFPG
 VFEYHNIRVYDEEATDLLAYWNDYKFKISKAKKHGSKCLVHCKMGVSRASSTVIAYAMKEYGWNLDRAVD
 YVKERRTVTKPNPSFMRQLEEYQGILLASKQRHNKLRSHSDSDLSDHHEPICPKGLELNKEMTT SADQ
 IAEVKTVENLAAMPTVFMHVVPQDANQKGLHTKERVICLEFSSQEFRAQIEDELNLNDINGCSSGCCCL
 SESKLPDNC HASKALLQPGQAPDIANKFPDLAVEDLET DALKADMNVHLLPMEELTSRLKDLPMSPDLE
 SPSQASCQAAISDFSTDRIDFFSALEKFVELSQETRSRFSHSRIEELGGGRSEGCRLSVIEVAASEMA
 ADDQRSSSLNTPHASEESSVDEDQSKAITELVSPDIIMQSHSENAISVKEIVTEIESISQGVGVQLKKG
 DILSNPCHTPKKSTIHELPLERVPAPESKPGHWEQDESFCVQPELARDSGKCAPEEGCLTTHSSTADLE
 EEPVEGEHDWGP MHS GAKWCPG SVRRATLEFEERLRQEQENHGTASAGPTLSNRKNSKNDS SVADLMP
 KWKSDETTP EHSFFLKEAEP SKGKGC SGSEAGSLSHCERNPTMPDCELLEHHS LPA PQDCLGSDSRSKK
 QEGDLKKQRAVVPNQECDQA ILLPLPKKIEIEI EYTPVTSLGHTEPGGEATPSKEGEKQGLRKVKMEQS
 ITMFCALDENLNR TLEPSQVSLHPQVLP LPHSSSECDR PADPNPMLSSPQDKGDCPSTPFKTAAPFVSCS
 TQGASFSLDYLLPHSVVHLEGCTEQSSATDNEL SPEQASWEDSRGHFLSSGSGMAHTSSPLTNE DLSLIN
 KLGDSVGLQKLDPSPEACRIPHSSSENIRDLSHSRGVVKEHAKEIESRVIFQAGFSKTSQMKRASL
 AKLGYLDLCKDYL PDRELVSSESPHLKLLQPFLRTDSGMHALMAHEPSESAGAQQNPQPKYSVEQLKTS
 ECIVQSKPVERPSVQYAK EFGYSQQCLLPKARPELTSSEGGPLLLQTQGLQYTGSPGLAVAPRQHGRT
 HPLRRLKRANDKKRTTNP FYNTM

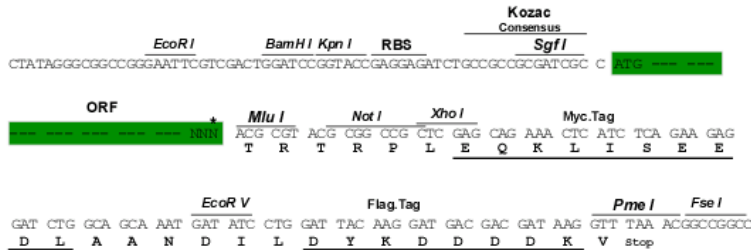
TRTRPLEQKLISEEDLAANDILDYKDDDDKV

Restriction Sites:

SgfI-MluI

Cloning Scheme:

Cloning sites used for ORF Shuttling:



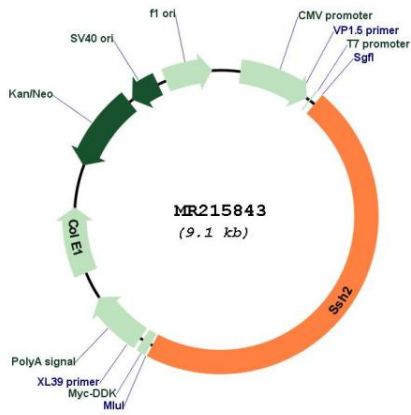
* The last codon before the Stop codon of the ORF

ACCN: NM_177710

ORF Size: 4269 bp

OTI Disclaimer:	The molecular sequence of this clone aligns with the gene accession number as a point of reference only. However, individual transcript sequences of the same gene can differ through naturally occurring variations (e.g. polymorphisms), each with its own valid existence. This clone is substantially in agreement with the reference, but a complete review of all prevailing variants is recommended prior to use. More info
OTI Annotation:	This clone was engineered to express the complete ORF with an expression tag. Expression varies depending on the nature of the gene.
Components:	The ORF clone is ion-exchange column purified and shipped in a 2D barcoded Matrix tube containing 10ug of transfection-ready, dried plasmid DNA (reconstitute with 100 ul of water).
Reconstitution Method:	<ol style="list-style-type: none">1. Centrifuge at 5,000xg for 5min.2. Carefully open the tube and add 100ul of sterile water to dissolve the DNA.3. Close the tube and incubate for 10 minutes at room temperature.4. Briefly vortex the tube and then do a quick spin (less than 5000xg) to concentrate the liquid at the bottom.5. Store the suspended plasmid at -20°C. The DNA is stable for at least one year from date of shipping when stored at -20°C.
RefSeq:	NM_177710.4 , NP_808378.2
RefSeq Size:	9040 bp
RefSeq ORF:	4272 bp
Locus ID:	237860
UniProt ID:	Q5SW75
Cytogenetics:	11 B5
MW:	158.2 kDa
Gene Summary:	Protein phosphatase which regulates actin filament dynamics. Dephosphorylates and activates the actin binding/depolymerizing factor cofilin, which subsequently binds to actin filaments and stimulates their disassembly. Inhibitory phosphorylation of cofilin is mediated by LIMK1, which may also be dephosphorylated and inactivated by this protein. [UniProtKB/Swiss-Prot Function]

Product images:



Circular map for MR215843