

Product datasheet for **MR215818**

Klh11 (NM_172565) Mouse Tagged ORF Clone

Product data:

Product Type:	Expression Plasmids
Product Name:	Klh11 (NM_172565) Mouse Tagged ORF Clone
Tag:	Myc-DDK
Symbol:	Klh11
Synonyms:	BC011167
Mammalian Cell Selection:	Neomycin
Vector:	pCMV6-Entry (PS100001)
E. coli Selection:	Kanamycin (25 ug/mL)



[View online »](#)

**ORF Nucleotide
Sequence:**

>MR215818 ORF sequence
 Red=Cloning site Blue=ORF Green=Tags(s)

TTTTGTAATACGACTCACTATAGGGCGGCCGGGAATTCGTCGACTGGATCCGGTACCGAGGAGATCTGCC
 GCC**GCGATCGCC**

ATGGCGCGGCTGTGGCGCGGAGCTGCCGCTGCGGCCGCGGCTGCATCTTTTCAAGTGTGGAGATGG
 AGAGCATGGAGACTGCCGTCGCCGTTCCGCGAGCCTGGCCGCTGAGGTCGAGGCGAGGAGTGGCACGGTAGA
 CTTCTGACCGGGGCGGCATCTCTACCCTCGTCGACACGGCGGGAGCGATCCGGGCCAGAGGCCGAG
 GACTTCGAGTGCAGCACTCACTGCTCCGAGTTGCTCCTGGCGCAGAACGAGCAGCGGCGTCAAGGCTGT
 TCTGCGACATCACCTGTGCTTCGGCGGGGCCGGAGGTCGCGAGTCCGTGCCACCGCTCGGTGCTGGC
 CGTGCCACCGAGTACTCACGCCCTTACTCTCGGGTCAGTTTTTCGGAATCGCGCTCGGGCCGGGTGGAG
 ATGCGCAAGTGGAGCTCAGAGCCCGACCCGAACCTGACACGGTGAAGCCGTTATCGAGTACATGTACA
 CCGGCCGATCCGAGTGAGCACCGCAGCGTGCACGAGGTCGGAGCTGGCCGACAGATTTCTATTAAT
 TCGTTTTAAAAGAATTCTGTGGAGAATTTCTCAAGAAAAAATTCTCTCGAATTGTGTGCCATTTCAT
 AGCTTAGCCACATGTATACCCTGAGCCAGCTTGTCTGAAAGCTGCAGATATGATACGGAGAAATTTCT
 ATAAAGTCATTCAGGATGAGGAATTTTACACTTTACCTTTCCATCTCATTCCGGGACTGGCTTTCCGACTT
 GGAAATCACTGTGGATTCTGAAGAGGTTCTTTTGAACAGTTTTTGAAGTGGGTTTCAGAGAAATGCAGAA
 GAGAGAGAGATACTTTGAAGAGCTTTTTAAATTGCTCAGATTGCCAGATGAAACCCACCTACCTTA
 CACGGCATGTCAAACAGAGCGGCTAGTGGCCAATAATGAAGTTTGTGTCAAGCTGGTGGCAGAAGCAGT
 GGAGAGGCATGCGCTCAGAGCAGAGAATACAGTCTGGCACATTGCAGCAGCCCACTTCAAGTCTCA
 CTGTTACCTCGCTATGGACAAAACATGGACGTAATCATGGTTATCGGAGGAGTGTGCGAAGGAGGAGACT
 ACTTAAGTGAATGTGTGGGATATTTTGTGATGAGGATAGTGGGTCAATCTGCCCCACATTCATAACCA
 CCTTGATGGACATGCCGTCGCAATTACAGAGTCCTACGTGTATGTTGCTGGCTCCATGGAACCCAGGTTTT
 GCTAAAACGTGGAAAGATACAACCCAAACCTGAATACATGGGAACATGTTTGTAGTCTGATGACCAGAA
 AGCACTCTTTGGGCTAACAGAAGTCAAAGGGAAGCTGTATAGCATTGGAGGACACGGCAATTTTAGCCC
 TGGCTTTAAAGACGTGACTGTTTACAATCCCGAGCTTGATAAATGGCACAACTTAGAGTCAGCACCAAAG
 ATTCTGCGAGATGTCAAAGCATTAGCCATTGAGGACCGGTTTGTGTACATTGCTGCCCGCACGCCGTGG
 ACCGGGACACTGAGGATGGACTGAAGGCTGTAATTACTTGCTATGATACAGAGACTCGACAGTGGCAAGA
 TGTGGAATCTTACCCTATTGACAATTACTGTTTTTCCAGATGTCTGTGGTCAATTCAACTTTTAT
 CAGACAGCATCATGCTGTCCCAAGATTACTCCTTAGAAAATGAAGAAGCAGTAAGAAAAATTGCCGGTC
 AGGTGTCTGATGATACCTTGAAAGCTTGCCTCCAGAAGTCTAAGCATCGAAGGAGCAGCCATTTGCTA
 TTACAGAGATGATGTCTTCATTATTGGAGGCTGGAAAAACAGTGTGATATTGACAAACAGTACAGGAAA
 GAGGCCTACCGATACTGTGCTGAGAGAAAGAGGTGGATGCTCCTTCTCCAATGCCTCAGCCCCGCTGCA
 GGGCCACTGCTTGCCATGTCAGGATCCCTTACCGTACTTACATGGCACACAGAGATACCCCATGCCTCA
 AAATTTAATGTGGCAGAAGGACCGCATCCGACAGATGCAAGAGATACATCGGCACGCCCTGAACATGCGG
 AGAGTGCCAAGTCCCAGATTGAATGC

ACGCGTACGCGGCCGCTCGAGCAGAACTCATCTCAGAAGAGGATCTGGCAGCAAATGATATCCTGGATT
 ACAAGGATGACGACGATAAGGTTTAA

Protein Sequence: >MR215818 protein sequence
 Red=Cloning site Green=Tags(s)

MAAAVAAAAAAAAAASFQVLEMESMETAVAGSASLAAEVRGSGTVDFVTGAGISTLVDTGGSDPGPEAE
 DFCSTHCSLSWRQNEQRRQGLFCDITLCFGGAGGREFRAHRSVLAAATEYFTPLLSGQFSESRSGRVE
 MRKWSSEPGPEPDTVEAVIEYMYTGRIRVSTGVSHEVLELADRFLILRLKEFCGEFLKKLHLNSCVAIH
 SLAHMYTLSQLALKAADMIRRFYKVIQDEEFYTLPFHLIRDWLSLEITVDSEEVLFETVLKWQRNAE
 ERERYFEELFKLLRLSQMKPTYLTRHVKPERLVANNEVCVKLVAEAVERHALRAENIQSGLTQQPTSQVS
 LLPRYGQNMVDVIMVIGGVSEGGDYLVSECVGYFVDEDRWVNLPHIHNHLDGHAVAITESYVYVAGSMEPGF
 AKTVERYPNPNLNTWEHVCSLMTRKHSFGLTEVKGKLYSIGGHGNFSPGFKDVTVYNPELKWVHNSAPK
 ILRDVKALAIEDRFVYIAARTPVDRDTEGLKAVITCYDTETRQWQDVESLPLIDNYCFFQMSVNSNFY
 QTASCCPKSYSLNEEA VRKIAGQVSDEILESLPPEVLSIEGAAICYRDDVFIIGGWKNSDDIDKQYRK
 EAYRYCAERKRWMLLPPMPQPCRATACHVRIPYRYLHGTQRYMPQNLMWQKDRIRQMQEIHRRHALNMR
 RVPSSQIEC

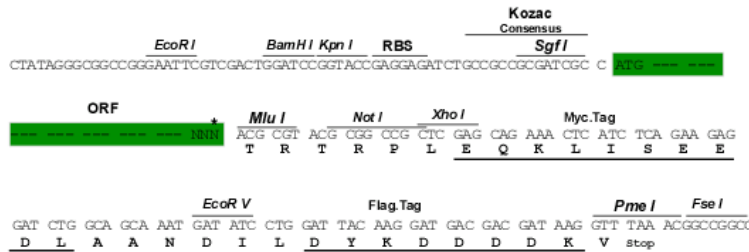
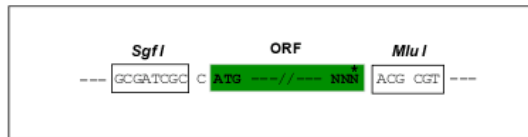
TRTRPLEQKLI SEEDLAANDILDYKDDDDKV

Restriction Sites:

Sgfl-MluI

Cloning Scheme:

Cloning sites used for ORF Shuttling:



* The last codon before the Stop codon of the ORF

ACCN: NM_172565

ORF Size: 2130 bp

OTI Disclaimer: The molecular sequence of this clone aligns with the gene accession number as a point of reference only. However, individual transcript sequences of the same gene can differ through naturally occurring variations (e.g. polymorphisms), each with its own valid existence. This clone is substantially in agreement with the reference, but a complete review of all prevailing variants is recommended prior to use. [More info](#)

OTI Annotation: This clone was engineered to express the complete ORF with an expression tag. Expression varies depending on the nature of the gene.

Components: The ORF clone is ion-exchange column purified and shipped in a 2D barcoded Matrix tube containing 10ug of transfection-ready, dried plasmid DNA (reconstitute with 100 ul of water).

Reconstitution Method:

1. Centrifuge at 5,000xg for 5min.
2. Carefully open the tube and add 100ul of sterile water to dissolve the DNA.
3. Close the tube and incubate for 10 minutes at room temperature.
4. Briefly vortex the tube and then do a quick spin (less than 5000xg) to concentrate the liquid at the bottom.
5. Store the suspended plasmid at -20°C. The DNA is stable for at least one year from date of shipping when stored at -20°C.

RefSeq: [NM_172565.2](#), [NP_766153.1](#)

RefSeq Size: 2436 bp

RefSeq ORF: 2130 bp

Locus ID: 217194

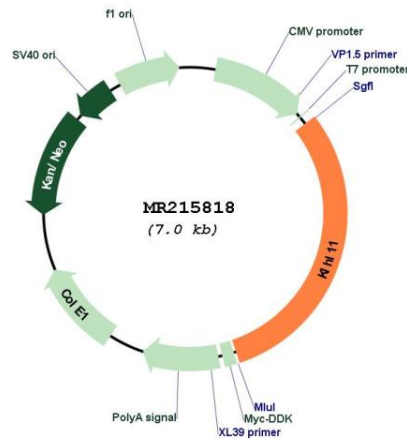
UniProt ID: [Q8CE33](#)

Cytogenetics: 11 D

MW: 80.4 kDa

Gene Summary: Component of a cullin-RING-based BCR (BTB-CUL3-RBX1) E3 ubiquitin-protein ligase complex that mediates the ubiquitination of target proteins, leading most often to their proteasomal degradation.[UniProtKB/Swiss-Prot Function]

Product images:



Circular map for MR215818