

Product datasheet for **MR215812**

Gsx1 (NM_008178) Mouse Tagged ORF Clone

Product data:

Product Type: Expression Plasmids
Product Name: Gsx1 (NM_008178) Mouse Tagged ORF Clone
Tag: Myc-DDK
Symbol: Gsx1
Synonyms: Gsh-1; Gsh1
Mammalian Cell Selection: Neomycin
Vector: pCMV6-Entry (PS100001)
E. coli Selection: Kanamycin (25 ug/mL)
ORF Nucleotide Sequence: >MR215812 ORF sequence
Red=Cloning site **Blue**=ORF **Green**=Tags(s)

TTTTGTAATACGACTCACTATAGGGCGGCCGGGAATTCGTCGACTGGATCCGGTACCGAGGAGATCTGCC
GCC**CGGATCGCC**

ATGCCGCGCTCCTCCTGGTGGATTCCCTTGCTGCTGCGGGAAGCCAGCGACAAGAAGGCTCCGGAGGGCA
GCCCGCCACCGCTCTTCCCCTACGCGGTCCCGCCCGCCAGCGCTCCACGGCTCTCGCCGGGCGCCTG
CCACGCGCGCAAGGCCGGCTTGCTGTGCGTGTGTCCCCTCTGTGTACCGCTTCGCAGCTGCACGGGCC
CCCGGGCCGCCGCGACTGCCGCTACTCAAGGCGTCTTCCCCTCCCTTCGGATCGCAGTACTGCCACGCAC
CCCTGGGCGCCAGCACTCCGTGTCCCCTGGAGTCGCCACGGCCCGGCCGCGGCCGAGCAGCAGCTGC
ACTCTACCAGACCTCCTACCCGCTGCCGGATCCCAGACAGTTTCACTGCATCTCTGTGGACAGCAGCTCG
AACCAGCTGCCAGCAGCAAGAGGATGCGGACGGCTTACCAGCACACAGCTCCTGGAGCTGGAGCGAG
AGTTCGCTCCAACATGTACCTCTCCCGCTGCGGCGCATCGAGATCGCGACCTATCTGAACCTGTCCGA
GAAGCAGGTGAAGATCTGGTTTCAGAACC CGCGGTGAAGCACAAGAAAGGCAAAGGCAGTAACCAC
CGCGCGGAGCTGGGCGGGGGCCGCGGGGGCGCACC GCAAGGCTGCAAGTGTCTTTCGCTCTCCTCAG
CCAAATGCTCAGAGGACGACGACGAATTGCCATGTCTCCATCTTCTCCGGGAAGGATGACAGAGATCT
CACAGTCACTCCG

ACGCGTACGCGGCGCTCGAGCAGAAACTCATCTCAGAAGAGGATCTGGCAGCAAATGATATCCTGGATT
ACAAGGATGACGACGATAAGGTTTAA



[View online »](#)

Protein Sequence: >MR215812 protein sequence
Red=Cloning site Green=Tags(s)

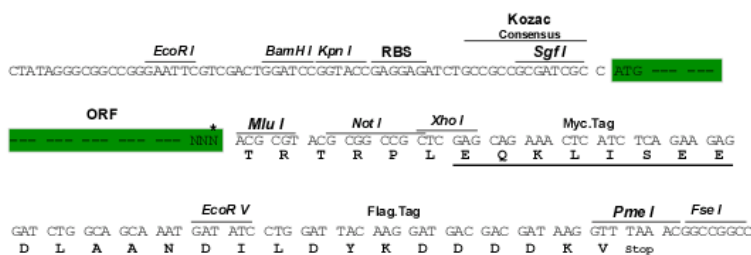
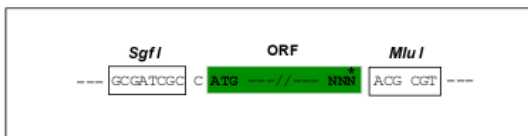
MPRSFLVDSLVLREASDKKAPEGSPPLFPYAVPPPHALHGLSPGACHARKAGLLCVCPLCVTASQLHGPGPPALPLLKASFPPFGSQYCHAPLGRQHSVSPGVAHGPAAAAAAAAAALYQTSYPLPDPQRQFHCISVDSSNQLPSSKRMRTAFTSTQLLELEREFASNMYLSRLRRIE IATYLNLSKQVKIWFQNRVKHKKEGKGSNRGGAGAGAGGGAPQGCKCSSLSSAKCEDDELPMSPSSSGKDDRDLTVTP

TRTRPLEQKLISEEDLAANDILDYKDDDDKV

Restriction Sites: Sgfl-MluI

Cloning Scheme:

Cloning sites used for ORF Shuttling:



* The last codon before the Stop codon of the ORF

ACCN: NM_008178

ORF Size: 786 bp

OTI Disclaimer: Due to the inherent nature of this plasmid, standard methods to replicate additional amounts of DNA in E. coli are highly likely to result in mutations and/or rearrangements. Therefore, OriGene does not guarantee the capability to replicate this plasmid DNA. Additional amounts of DNA can be purchased from OriGene with batch-specific, full-sequence verification at a reduced cost. Please contact our customer care team at custsupport@origene.com or by calling 301.340.3188 option 3 for pricing and delivery.

The molecular sequence of this clone aligns with the gene accession number as a point of reference only. However, individual transcript sequences of the same gene can differ through naturally occurring variations (e.g. polymorphisms), each with its own valid existence. This clone is substantially in agreement with the reference, but a complete review of all prevailing variants is recommended prior to use. [More info](#)

OTI Annotation: This clone was engineered to express the complete ORF with an expression tag. Expression varies depending on the nature of the gene.

Components: The ORF clone is ion-exchange column purified and shipped in a 2D barcoded Matrix tube containing 10ug of transfection-ready, dried plasmid DNA (reconstitute with 100 ul of water).

Reconstitution Method:

1. Centrifuge at 5,000xg for 5min.
2. Carefully open the tube and add 100ul of sterile water to dissolve the DNA.
3. Close the tube and incubate for 10 minutes at room temperature.
4. Briefly vortex the tube and then do a quick spin (less than 5000xg) to concentrate the liquid at the bottom.
5. Store the suspended plasmid at -20°C. The DNA is stable for at least one year from date of shipping when stored at -20°C.

RefSeq: [NM_008178.1](#), [NM_008178.2](#), [NP_032204.1](#)

RefSeq Size: 1773 bp

RefSeq ORF: 786 bp

Locus ID: 14842

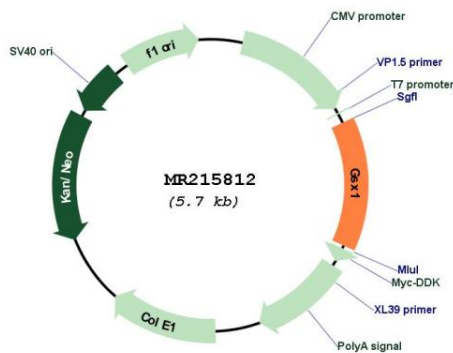
UniProt ID: [P31315](#)

Cytogenetics: 5 86.79 cM

MW: 27.7 kDa

Gene Summary: Probable transcription factor that binds to the DNA sequence 5'-GC[TA][AC]ATTA[GA]-3'. Activates the transcription of the GHRH gene. Plays an important role in pituitary development.[UniProtKB/Swiss-Prot Function]

Product images:



Circular map for MR215812