

Product datasheet for MR215798

Kif21b (NM_001039472) Mouse Tagged ORF Clone

Product data:

Product Type: Expression Plasmids
Product Name: Kif21b (NM_001039472) Mouse Tagged ORF Clone
Tag: Myc-DDK
Symbol: Kif21b
Synonyms: 2610511N21Rik; mKIAA0449
Mammalian Cell Selection: Neomycin
Vector: pCMV6-Entry (PS100001)
E. coli Selection: Kanamycin (25 ug/mL)
ORF Nucleotide Sequence: >MR215798 representing NM_001039472
 Red=Cloning site Blue=ORF Green=Tags(s)

TTTTGTAATACGACTCACTATAGGGCGGCCGGAATTCGTCGACTGGATCCGGTACCGAGGAGATCTGCC
 GCC**CGATCGC**C

ATGGCTGGCCAGGGCGACTGCTGCGTCAAAGTGGCCGTCAGGATCCGGCCCCAGCTGTCAAAGGAGAAGA
 TTGAAGGCTGTCACATCTGTACCTCCGTTACCCCGGGAGAGCCCCAGGTCTGCTGGGGAAGGACAAGGC
 CTTACCTATGACTTTGTCTTTGACCTGGACACCTGGCAGGAGCAAACTATTGACCTGTGTGAGCAA
 CTCATCGAAGGCTGCTTTGAGGGCTATAATGCCACAGTCTAGCCTATGGACAGACAGGGCTGGGAAGA
 CATATACTATGGGCACCGCTTTGACACAGTGACATCAGAAGAGGAGCAGGGCATCATCCAAGGGCCAT
 TGCACATCTTTCAGGGCATCGACGAACGCAAGCGGGCACAAGAGAAGGGTGTGACTGGGCCTGAG
 TTCAAAGTCAGTCTCAATTCCTGGAGCTCTACAATGAAGAGATCCTTGACCTATTTGACAGCACCCGTG
 ACCCCGATGCCCGACACCCGAGTCCAACATCAAGATCCACGAGGATGCCAACGGTGGCATCTACACCAC
 AGGTGTCACTTCTCGCCTGATCAACTCCAGGAGGAGCTGATCCAGTGCCTGAAGCAGGGCGCCCTGTCA
 CGTACCACAGCCAGCACCCAGATGAATGTACAGAGCTCCCGATCCCATGCCATCTTACCATCCACTGT
 GCCAGATGCGCGTGTGTGCCAGCCTGACCTGGTGAATGAGACCGTGACTGGGCTCCAGATGGAGCCG
 CCCCACAGGCACTGAGTACGAGACTCTCACTGCTAAGTTTCACTTCGTGGACTTGGCTGGCTCAGAGCGG
 CTGAAGCGGACAGGGGCCACCGGCAACGGCCAAAGAGGGCATCTCCATCAACTGTGGTCTGCTGGCCT
 TGGGCAATGTGATCAGCGCCTTGGGGGACCAGAGCAAGAAGGTGCTGCAGTGCCTTACAGGGAATCCAA
 GCTCACTCGGCTGCTCCAGGACTCTCTTGAGGCAACAGCCAGACCATCATGATCGCCTGTGTGAGCCCC
 TCGGATCGGGACTTCATGGAGACTTAACTCTCAAATATGCCAACCGGGCCGCAACATCAAAAACA
 AAGTGGTGGTGAACCAGGACAAGACCAGCCAGCAGATCAGCGCGCTGCGGGCTGAGATCGCACGCTGCA
 GATGGAGTTGATGGAGTACAAAGCGGGCAAGCGAGTGATTGGGGAGGACGGTACAGAGGGCTACAGTGAC
 CTGTTCCGAGAGAACCCATGCTGCAGAAGGAGAATGGGGCGCTGCGGCTCCGAGTGAAGCCATGCAGG
 AAGCCATTGATGCCATCAACAACCGGGTACACAACCTCATGAGCCAGGAGGCCAACCTGCTTCTGGCCAA
 GGCTGGTATGGCAATGAGGCCATTGGTCTCTGATCCAGAATACATCCGGGAGATCGAGGAGCTGCGA



[View online »](#)

ACAAAGCTCCTGGAGAGTGAGGCTATGAATGAGTCCCTCCGCAGAAGCCTCTCCCGGGCTTCCGCTCGGA
 ATCCCTACTCCCTGGGAGCATCTCCAGCAGGTCCAGCCTTTGGGGCAGCCCCGCCACCTCCATGGAAGA
 TGCTTCTGAAGTGATCCGCAAGGCTAAGCAAGACCTGGAGCGGCTGAAAAAGAAGGAGGTGAGGCAGCGG
 AGGAAGAGCCCAGAGAAAAGAAGCGTTCAAGAAGAGGGCAAACCTCCAGGCAGAAAACAGTGAGGAGACAG
 ACGAGAACGAGGCTGAGGAGGAGGAGGAAGAGCGAGATGAAAGTGGCTGTGAGGAGGAGGAAGGTCGTGA
 GGATGAGGATGAAGACTCGGGCAGTGAAGAGAGCCTGGTAGACTCAGACTCCGACCCTGAAGAAAAGGAA
 GTGAACCTCCAGGCCGACCTGGCAGACCTGACGTGTGAGATCGAGATCAAGCAGAAGCTGATCGACGAGC
 TGGAGAACAGCCAGCGGGCTGCAGACGCTCAAGCACAGTACGAGGAGAAGCTAATTCTGCTGCAGAA
 CAAGATCCGGGATACGCAGCTGGAGCGTGACCGCTGCTGCAGAACCCTCAGCACTATGGAGTGCTACACG
 GAAGAGAAGGCCAACAGATAAAGGCAGATTATGAGAAGAGACTGCGGGAGATGAACCGGGACCTGCAGA
 AGCTACAGGCTGCTCAAAAAGAACATGCCAGGCTACTCAAGAACCAGTCTCGCTATGAAAGGGAGCTGAA
 GAAGCTACAAGCGGAGGTAGCTGAGATGAAGAAGGCCAAGGTAGCCCTCATGAAGCAAATGCGTGAGGAG
 CAGCAGCGGGCGGACTGGTGGAGACCAAGAGGAACCGGGAGATTGCTCAGCTCAAGAAGGAGCAACGGA
 GGCAGGAGTTTCAGATACGAGCCCTGGAATCTCAGAAGCGCCAGCAGGAAATAGTTCTGAGGAGGAAAAC
 CCAGGAGTTCGACTGAGGCGCTGGCAAAGCCCATGTCTGAGCGAGTGGCTGGGCGTGTAGGATTG
 AAGCCCCCAATATGGATTCTGGGGCTGAGGTGTCTGCCAGCACCTCGTCTGAGGCTGAGTCGGGAG
 CCCGCTCCGTCTCCAGCATAGTGCCTCAGTGGAACCGGAAGATCGACCACCTTCTGGGAGACCGCCCCAC
 CGCCACTGTCAATGGCGGCCGCCAGCCAGGAAAAAGTTCAAAAAGAAGGGAGCCAGCCAAAGCTTCAGT
 AAGGCTGCGAGACTCAATGGCAGTCCCTGGAACGGAGGATCATTGACATTGTCATGCAGAGAATGACCA
 TCGTCAACCTGGAGGCTGATATGGAGCGTCTATAAAGAAAAGGGAGGAGCTTCTCTCTGCAGGAGGC
 GCTGCGGAGGAAGCGGGAGCACCTGCAGGCTGAGAGCCAGAGGAGGAGAAGGGGCTCCAGGAGCTGGCT
 GAGGAGATCGAAGTGTGGCAGCCAATATTGACTACATCAACGACAGCATCACTGACTGCCAAGCCACCA
 TCGTGCAGCTGGAGGAAACCAAGGAGGAGCTGGACTCAACAGACAGCTCAGTGGCTATTGCTCCTGCTC
 TCTGGCTGAAGCCCGCTCTGCTAGACAACTTCTCAAGGCGTCCATTGACAAGGGACTTCAAGTACGA
 CAGAAGGAAGCCAGATCCGGCTGCTAGAAGGACGCTTAGACAGACAGACATGACAGGCTCTTCCAGAA
 ACCACCTGCTCTAGACGCTTTGCGTGAGAAGGCCGAGGCACACCCCGAGCTGCAGGCCCTCATCTACAA
 TGTGCAGCATGAGAATGGCTATGCAAGCACAGATGAGGAAGTTTCTGAGTTCTCTGAGGGGAGCTTTTCC
 CAGTCAATTTACCATGAAAGGCTCCACCAGCCACGATGACTTCAAGTTCAAGGGTGAGCCCAAGCTATCCG
 CACAGATGAAGGCCGTGCTGCGGAGTGCCTAGGACCCCATTTGGACAGCTCTACCAAGAACATCACCAA
 GTCCCTGGCTCCCTCGTTGAGATCAAAGAGGATGGGGTGGGCTTCTCTATCCGGGACCCCTACTACCGG
 GACAAGGTCTCAGCACCGTCAAGCTGCCACCCGGGGCAGCACTTCCCTCGGCAATCTCGAGGTGCCA
 CGGACAGTCTCCTCTTACCCGAAGGAAGTCTTATGACCGGGGACAGCCCATCAGATCCACAGACATGGG
 ATTCACACCTCCCTCATCACCTCCCACTCGGCCCGCAACGACCCCAACGCTTCTCTCGTCTCACACAGC
 AATCAGAGCCAGGGCTCAGCACTGGACAAGTCTGATGACAGCGACTCCTCTTTGTGCGGAGGTCTGAGGG
 GCATCATCACCCCATTTGGCGGAGCTAAGGGAGCGCGGACGGCCCCGCTGCAGTGATCTCCATGGCCGA
 GGGTCACACCAAGCCCATCTCTGCCTGGATGCCACCGATGAGCTGCTTTTACGGGATCCAAAGACCGT
 AGCTGCAAGATGTGGAACCTGGTACAGGGCAGGAGATTGAGCTCTCAAGGGTCAACCAACACGTGG
 TTTCTATCAAATACTGCAGCCACTCGGGCTGGTGTCTCTGTGTCCAGCTCTACATCAAGGTGTGGGA
 TATCCGGGACTCAGCCAAGTGCATTCGGACACTCAGTCTCAGGCCAGGTGATCTCAGGAGATGCGTGC
 ATAGCCACATCCACCCGCGCCATCACCAGTGCCAGGGGGAACATCAGATCAACCAGATGGCCCTCAGCC
 CCTCAGGCTCCATGCTATACGTTGCCTCTGGCAATGCTGTCCGCATCTGGGAGCTCAACAGGTTCCAGCC
 CATTGGCAAACCTGACTGGCCACATTGGCCAGTGTGCTTAAACAGTCAACCCAGACTTCAAACCAGCAT
 GACCTCGTGGTGACGGGCTCCAAGGACCACTATGTGAAGATGTTCCAGCTGGGCGACTGTGTGACGGGCA
 CCATTGGCCCAACCCACAACCTTTGAGCCCCCTCACTATGATGGTATTGAATGCCTGGCTATCCAAGGAGA
 CATACTCTCAGTGGCTCCAGAGACAATGGCATCAAGAAGTGGGACCTGGACCAGCAGGAGCTCATCCAG
 CAAATCCCAACGCTCACAAGGACTGGGTGTGCGCCCTGGCCTTTGTACCCGGCCGGCCCATGCTGCTGA
 GCGCCTGCGGGCCGGCTTCATCAAGGTCTGGAATGTGGACAACCTCACACCCATTGGTGAGATCAAGGG
 CCACGACAGCCCATCAATGCCATCTGCACCAACAGCAAGCACATCTTACGGCCTCCAGTGACCTGACA
 GTGAAGTTCTGGAGCATACGGCGCTACCAGCAGCCACCCCT

ACGCGTACGCGGCCGCTCGAGCAGAACTCATCTCAGAAGAGGATCTGGCAGCAAATGATATCCTGGATT
 ACAAGGATGACGACGATAAGGTTTAA

Protein Sequence: >MR215798 representing NM_001039472
 Red=Cloning site Green=Tags(s)

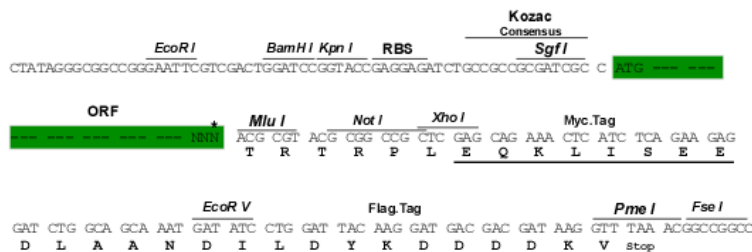
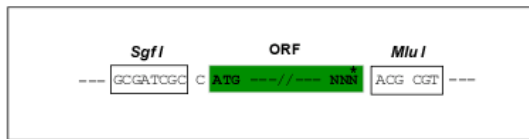
MAGQGDCCKVAVRIRPQLSKEKIEGCHICTSVTPGEPQVLLGKDKAFTYDFVFDLDTWQEQIYSTCVSK
 LIEGCFEGYNATVLAYGQTGAGKTYTMTGTFDVTSEEEQGIIPRAIAHLFRGIDERKRRAQEKVGTGPE
 FKVSAQFLELYNEEILDLDSTRDPDARHRRSNIKIHDANGGIYTTGVT SRLINSQEEI IQCLKQGALS
 RTTASTQMNVSRSRSHAI FTIHLQMRVCAQPDLVNETVTGLPDGAAPTGETEYELTAKFHFDLAGSER
 LKRTGATGERAKEGISINCGLLALGNVISALGDQSKKVVHVPYRDSKLRLLQDSLGGNSQTIMIACVSP
 SDRDFMETLNTLKYANRARNIKNKVVVNQDKTSQQISALRAE IARLQMELMYKAGKRVIGEDGTEGYSD
 LFRENAMLQKENGALRLRVKAMQE AIDA INNRVTQLMSQEANLLLAKAGDGNEAIGALI QNYIREIEELR
 TKLLESEAMNESLRRSLSRASARNPYSLGASPAGPAFGGSPATSMEDASEVIRKAKQDLERLKKKEVQRQ
 RK SPEKFAFKRAKLAENSEETDENE AEEEEERDESGCEEEGREDEDEDSGSEESLVDSDSPEEKE
 VNFQADLADLTCEIEIKQKLIDELNSQRRLQTLKHQYEEKLILLQNKIRDTQLERDRV LQNLSTMECYT
 EEKANKIKADYEKRLREMNRLQKLQAAQKEHARLLKNQSR YERELKKLQAEVAEMKKAKVALMKQMREE
 QQRRLVETKRNREIAQLKKEQRRQEFQIRALESQKRQEQEIVLRRKTQEV SALRRLAKPMSERVAGRVGL
 KPPNMDSGAEVSASTTSSAE SGARSVSSIVRQWNRKIDHFLGDRPTATVNGRPARKKFKQKKGASQFS
 KAARLKWQSLERRIIDIVQRM TIVNLEADMERLIKKREELFL LQEALRRKREHLQAESPEEEKGLQELA
 EEIEVLAANIDYINDSITDCQATIVQLEETKEELDSTDTSVV ISSCSLAEARLLLDNFKASIDKGLQVA
 QKEAQIRLLEGR LRQDTMTGSSQNHL LLDALREKAEAPHELQAL IYNVQHENG YASTDEEVSEFSEGSFS
 QSFTMKGSTSHDDFKFKGEPKLSAQMKAVSAECLGPPLDSSTKNITKSLASLVEIKEDGVGFSIRD PYYR
 DKVSRVSLPTRGSTFPRQSRGATDTSPLTRRKS YDRGQPIRSTDMGFTPPSSPPTPRNDRNVF SRLTS
 NQSQGSALDKSDDSDSSLSEVL RGIITPIGGAKGARTAPLQCISMAEGHTKPI LCLDATDELLFTGSKDR
 SCKMWNLV TGQEIAALKGHPNNVSIKYCSHGLVFSVSSSYIKVWDIRDSAKCIRTLTSSGQVISGDAC
 IATSTRAITSAQGEHQINQMALSPSGSMLYVASGN AVRIWELNRFQPIGKLTGHIGPVMCLTVTQTSNQH
 DLVVTGSKDHYKMFQLGDCVTGTIGPTHNFEPHYDGI ECLAIQGDILFSGSRDNGIKKWDLDQQLIQ
 QIPNAHKDWCALAFVGRPMLLSACRAGFIKVVNVDNFTPIGEIKGHDSPINAICTNSKHIFTASSDLT
 VKFWSIRRLPAHP

TRTRPLEQKLISEEDLAANDILDYKDDDDKV

Restriction Sites:
 Cloning Scheme:

SgfI-MluI

Cloning sites used for ORF Shuttling:

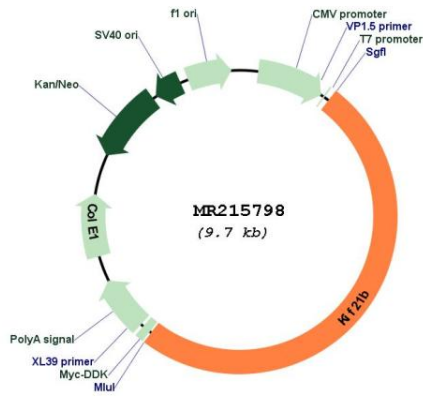


* The last codon before the Stop codon of the ORF

ACCN: NM_001039472

| | |
|-------------------------------|---|
| ORF Size: | 4872 bp |
| OTI Disclaimer: | The molecular sequence of this clone aligns with the gene accession number as a point of reference only. However, individual transcript sequences of the same gene can differ through naturally occurring variations (e.g. polymorphisms), each with its own valid existence. This clone is substantially in agreement with the reference, but a complete review of all prevailing variants is recommended prior to use. More info |
| OTI Annotation: | This clone was engineered to express the complete ORF with an expression tag. Expression varies depending on the nature of the gene. |
| Components: | The ORF clone is ion-exchange column purified and shipped in a 2D barcoded Matrix tube containing 10ug of transfection-ready, dried plasmid DNA (reconstitute with 100 ul of water). |
| Reconstitution Method: | <ol style="list-style-type: none"> 1. Centrifuge at 5,000xg for 5min. 2. Carefully open the tube and add 100ul of sterile water to dissolve the DNA. 3. Close the tube and incubate for 10 minutes at room temperature. 4. Briefly vortex the tube and then do a quick spin (less than 5000xg) to concentrate the liquid at the bottom. 5. Store the suspended plasmid at -20°C. The DNA is stable for at least one year from date of shipping when stored at -20°C. |
| RefSeq: | NM_001039472.2 |
| RefSeq Size: | 9119 bp |
| RefSeq ORF: | 4875 bp |
| Locus ID: | 16565 |
| UniProt ID: | Q9QXL1 |
| Cytogenetics: | 1 59.61 cM |
| MW: | 181.4 kDa |
| Gene Summary: | Plus-end directed microtubule-dependent motor protein which displays processive activity (PubMed:27117409, PubMed:10225949). Is involved in regulation of microtubule dynamics, synapse function and neuronal morphology, including dendritic tree branching and spine formation (PubMed:27117409). Plays a role in learning and memory (PubMed:27117409). Involved in delivery of gamma-aminobutyric acid (GABA(A)) receptor to cell surface (PubMed:25172774).[UniProtKB/Swiss-Prot Function] |

Product images:



Circular map for MR215798