

Product datasheet for MR215762

Colec10 (NM_173422) Mouse Tagged ORF Clone

Product data:

Product Type: Expression Plasmids
Product Name: Colec10 (NM_173422) Mouse Tagged ORF Clone
Tag: Myc-DDK
Symbol: Colec10
Synonyms: CL-L1
Mammalian Cell Selection: Neomycin
Vector: pCMV6-Entry (PS100001)
E. coli Selection: Kanamycin (25 ug/mL)
ORF Nucleotide Sequence: >MR215762 representing NM_173422
Red=Cloning site Blue=ORF Green=Tags(s)

TTTTGTAATACGACTCACTATAGGGCGCCGGGAATTCGTCGACTGGATCCGGTACCGAGGAGATCTGCC
GCC**CGGATCGCC**

ATGAATGGCTTTAGAGTCCTGCTTGAAGCAACCTATCCATGCTGTTGCTGCTAGCTCTCTTGCACCTTC
AGAGTCGGGTCTGGATGTTGATAGTCGATCAGCTGCAGAAGTCTGTGCCACACATACCATTTACCAGG
ACCTAAAGGGGATGATGGTGAAGAGGTGACACAGGAGAAGAAGGCAAGGATGGCAAAGTGGGACGCCAG
GGACAAAAGGAGTGAAGGAGAGCTGGGTGATATGGGAGCCAGGGTAATATTGGCAAGTCTGGCCCTA
TTGGCAAGAAGGGTGACAAAGGGGAAAAGGGTCTGCTTGAATTCCTGGAGAAAAAGGCAAAGCAGGTAC
CATCTGTGATTGTGGCAGGTACCGAAAAGTGGTTGGACAACCTGGATATTAGTGTTCGCTCTTAAGACA
TCAATGAAATTCATCAAGAATGTTATAGCAGGGATCCGGGAAACTGAAGAGAAATTTACTACTATTGTGC
AGGAGGAGAAGAACTACAGGGAATCTCTGACCCACTGCAGGATCCGAGGAGGGATGCTAGCCATGCCCAA
GGATGAAGTCGTTAACACCCTTATTGCTGACTATGTCGCAAGAGTGGTTTCTTCAGAGTGTTCATTGGG
GTCAATGACCTTGAGAGGGAGGGCAATATGTGTTACAGATAAACTCCATTGCAGAACTACAGCAACT
GGAAGGAGGAGGAACCTAGTGACCCCTCCGGCCATGAGGACTGTGTGGAGATGTTGAGCTCTGGCAGGTG
GAATGACACAGAGTGTACCTTACCATGATTTTTGTCTGTGAGTTGTCAAGAAGAAAAAA

ACGCGTACGCGGCCGCTCGAGCAGAAACTCATCTCAGAAGAGGATCTGGCAGCAAATGATATCCTGGATT
ACAAGGATGACGACGATAAGGTTTAA



[View online »](#)

Protein Sequence: >MR215762 representing NM_173422
Red=Cloning site Green=Tags(s)

MNGFRVLLRSNLSMLLLLALLHFQSLGLDSDRSAAEVCATHTISPGPKGDDGERGDTGEEGKDGKVGRO
 GPKGVKGELGDMGAQGNIGKSGPIGKKGDKGEKGLLIPGEGKAGTICDCGRYKVVQQLDISVARLKT
 SMKFIKNVIAGIRETEEFYIIVQEEKNYRESLTHCRIRGGMAMPKDEVNTLIADYVAKSGFFRVFIG
 VNDLREGQYVFDNTPLQNYSNWKEEESPDPGHEDCVEMLSSGRWNDTECHL TMYFVCFVKKKK

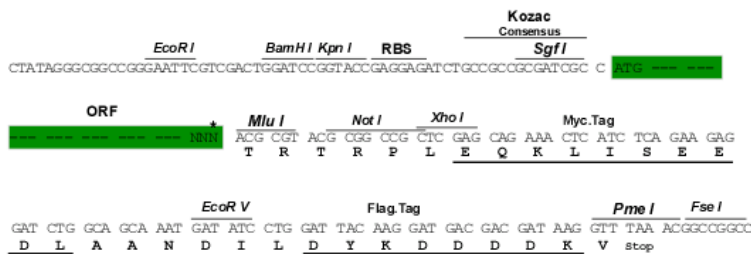
TRTRPLEQKLISEEDLAANDILDYKDDDDKV

Chromatograms: https://cdn.origene.com/chromatograms/ja1969_d06.zip

Restriction Sites: SgfI-MluI

Cloning Scheme:

Cloning sites used for ORF Shuttling:



* The last codon before the Stop codon of the ORF

ACCN: NM_173422

ORF Size: 831 bp

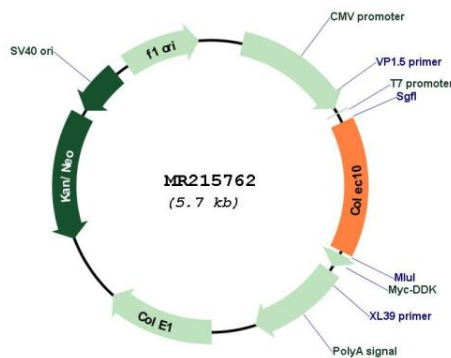
OTI Disclaimer: Due to the inherent nature of this plasmid, standard methods to replicate additional amounts of DNA in E. coli are highly likely to result in mutations and/or rearrangements. Therefore, OriGene does not guarantee the capability to replicate this plasmid DNA. Additional amounts of DNA can be purchased from OriGene with batch-specific, full-sequence verification at a reduced cost. Please contact our customer care team at custsupport@origene.com or by calling 301.340.3188 option 3 for pricing and delivery.

The molecular sequence of this clone aligns with the gene accession number as a point of reference only. However, individual transcript sequences of the same gene can differ through naturally occurring variations (e.g. polymorphisms), each with its own valid existence. This clone is substantially in agreement with the reference, but a complete review of all prevailing variants is recommended prior to use. [More info](#)

OTI Annotation: This clone was engineered to express the complete ORF with an expression tag. Expression varies depending on the nature of the gene.

- Components:** The ORF clone is ion-exchange column purified and shipped in a 2D barcoded Matrix tube containing 10ug of transfection-ready, dried plasmid DNA (reconstitute with 100 ul of water).
- Reconstitution Method:**
1. Centrifuge at 5,000xg for 5min.
 2. Carefully open the tube and add 100ul of sterile water to dissolve the DNA.
 3. Close the tube and incubate for 10 minutes at room temperature.
 4. Briefly vortex the tube and then do a quick spin (less than 5000xg) to concentrate the liquid at the bottom.
 5. Store the suspended plasmid at -20°C. The DNA is stable for at least one year from date of shipping when stored at -20°C.
- RefSeq:** [NM_173422.3](#), [NP_775598.2](#)
- RefSeq Size:** 4587 bp
- RefSeq ORF:** 834 bp
- Locus ID:** 239447
- UniProt ID:** [Q8CF98](#)
- Cytogenetics:** 15 21.15 cM
- MW:** 31 kDa
- Gene Summary:** Lectin that binds to various sugars: galactose > mannose = fucose > N-acetylglucosamine > N-acetylgalactosamine. Acts as a chemoattractant, probably involved in the regulation of cell migration.[UniProtKB/Swiss-Prot Function]

Product images:



Circular map for MR215762