

Product datasheet for MR215755

Egfl7 (NM_198725) Mouse Tagged ORF Clone

Product data:

Product Type: Expression Plasmids
 Product Name: Egfl7 (NM_198725) Mouse Tagged ORF Clone
 Tag: Myc-DDK
 Symbol: Egfl7
 Synonyms: VE-statin; Zneu1
 Mammalian Cell Selection: Neomycin
 Vector: pCMV6-Entry (PS100001)
 E. coli Selection: Kanamycin (25 ug/mL)
 ORF Nucleotide Sequence: >MR215755 representing NM_198725
 Red=Cloning site Blue=ORF Green=Tags(s)

TTTTGTAATACGACTCACTATAGGGCGGCCGGAATTCGTCGACTGGATCCGGTACCGAGGAGATCTGCC
 GCC**CGGATCGCC**

ATGCAGACCATGTGGGGCTCCGGAGAAGCTTGTAGCATGGTTCTAGTGTGGCAGCAGATGGTACTA
 CTGAGCATGTCTACAGACCCAGCCGTAGAGTGTGTACTGTGGGGATTTCCGGAGTTCCATCTCGGAGAC
 CTTTGTGCAGCGTGTATACCAGCCTTACCTCACCATTGCGACGGACACAGAGCCTGCAGCACCTACCGA
 ACCATCTACCGGACTGCCTATCGCCGTAGCCCTGGGGTACTCCCGAAGGCCTCGCTATGCTTGCTGCC
 CTGGTTGGAAGAGGACCAGTGGGCTCCCTGGGGCTTGTGGAGCAGCAATATGCCAGCCTCCATGTGGGAA
 TGGAGGGAGTTGCATCCGCCAGGACACTGCCGCTGCCCTGTGGGATGGCAGGGAGATACTTGCCAGACA
 GATGTTGATGAATGCAGTACAGGAGAGGCCAGTTGCCCCAGCGCTGTGTCAATACTGTGGGAAGTTACT
 GGTGCCAGGGATGGGAGGGACAAGCCCATCTGCAGATGGGACGCGCTGCCTGTCTAAGGAGGGGCCCTC
 CCCGGTGGCCCCAAACCCACAGCAGGAGTGGACAGCATGGCGAGAGAGGAGGTGTACAGGCTGCAGGCT
 CGGGTTGATGTGCTAGAACAAGAACTGCAGTTGGTGTGGCCCCACTGCACAGCCTGGCCTCTCGGTCCA
 CAGAGCATGGGCTACAAGATCCTGGCAGCCTGCTGGCCATTCTTCCAGCAGCTGGACCGAATTGATTC
 ACTGAGCTCCTGCAAAAAAGATCTG

ACGCGTACGCGGCCGCTCGAGCAGAAACTCATCTCAGAAGAGGATCTGGCAGCAAATGATATCCTGGATT
 ACAAGGATGACGACGATAAGGTTTAA



[View online »](#)

Protein Sequence: >MR215755 representing NM_198725
 Red=Cloning site Green=Tags(s)

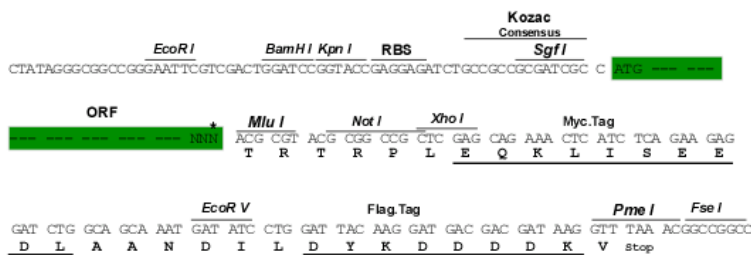
MQTMWGSSELLVAWFLVLAADGTTEHVYRPSRRVCTVGISGGSISETFVQRVYQPYLTTCDGHRACSTYR
 TIYRTAYRRSPGVTPARPRYACCPGWKRTSGLPGACGAAICQPPCGNGGSCIRPGHCRCPCVWGQDTCQT
 DVDECSTGEASCPQRCVNTVGSYWCQGWEGQSPSADGTRCLSKEGSPSPVAPNPTAGVDSMAREEVYRLQA
 RVDVLEQKLQLVLAPLHSLASRSTEHLQDPGSLLAHSFQQLDRIDSLSSCKKDL

TRTRPLEQKLISEEDLAANDILDYKDDDDKV

Restriction Sites: Sgfl-MluI

Cloning Scheme:

Cloning sites used for ORF Shuttling:



* The last codon before the Stop codon of the ORF

ACCN: NM_198725

ORF Size: 795 bp

OTI Disclaimer: The molecular sequence of this clone aligns with the gene accession number as a point of reference only. However, individual transcript sequences of the same gene can differ through naturally occurring variations (e.g. polymorphisms), each with its own valid existence. This clone is substantially in agreement with the reference, but a complete review of all prevailing variants is recommended prior to use. [More info](#)

OTI Annotation: This clone was engineered to express the complete ORF with an expression tag. Expression varies depending on the nature of the gene.

Components: The ORF clone is ion-exchange column purified and shipped in a 2D barcoded Matrix tube containing 10ug of transfection-ready, dried plasmid DNA (reconstitute with 100 ul of water).

Reconstitution Method:

1. Centrifuge at 5,000xg for 5min.
2. Carefully open the tube and add 100ul of sterile water to dissolve the DNA.
3. Close the tube and incubate for 10 minutes at room temperature.
4. Briefly vortex the tube and then do a quick spin (less than 5000xg) to concentrate the liquid at the bottom.
5. Store the suspended plasmid at -20°C. The DNA is stable for at least one year from date of shipping when stored at -20°C.

RefSeq: [NM_198725.2](#), [NP_942018.2](#)

RefSeq Size: 1365 bp

RefSeq ORF: 798 bp

Locus ID: 353156

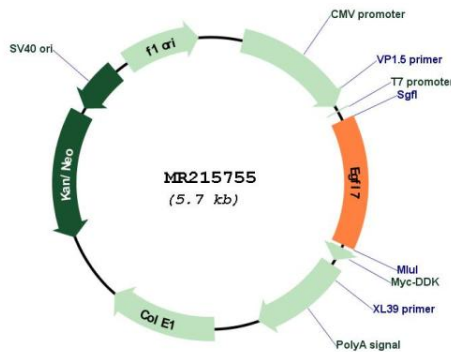
UniProt ID: [Q9QXT5](#)

Cytogenetics: 2 A3

MW: 29.1 kDa

Gene Summary: Regulates vascular tubulogenesis in vivo. Inhibits platelet-derived growth factor (PDGF)-BB-induced smooth muscle cell migration and promotes endothelial cell adhesion to the extracellular matrix and angiogenesis.[UniProtKB/Swiss-Prot Function]

Product images:



Circular map for MR215755