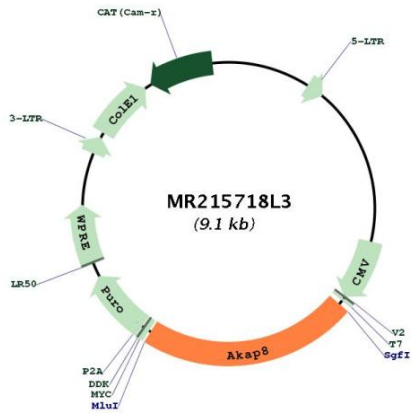


OTI Disclaimer:	The molecular sequence of this clone aligns with the gene accession number as a point of reference only. However, individual transcript sequences of the same gene can differ through naturally occurring variations (e.g. polymorphisms), each with its own valid existence. This clone is substantially in agreement with the reference, but a complete review of all prevailing variants is recommended prior to use. More info
OTI Annotation:	This clone was engineered to express the complete ORF with an expression tag. Expression varies depending on the nature of the gene.
Components:	The ORF clone is ion-exchange column purified and shipped in a 2D barcoded Matrix tube containing 10ug of transfection-ready, dried plasmid DNA (reconstitute with 100 ul of water).
Reconstitution Method:	<ol style="list-style-type: none">1. Centrifuge at 5,000xg for 5min.2. Carefully open the tube and add 100ul of sterile water to dissolve the DNA.3. Close the tube and incubate for 10 minutes at room temperature.4. Briefly vortex the tube and then do a quick spin (less than 5000xg) to concentrate the liquid at the bottom.5. Store the suspended plasmid at -20°C. The DNA is stable for at least one year from date of shipping when stored at -20°C.
RefSeq:	NM_019774.4 , NP_062748.2
RefSeq Size:	3695 bp
RefSeq ORF:	2064 bp
Locus ID:	56399
UniProt ID:	Q9DBR0
Cytogenetics:	17 B1
Gene Summary:	This gene encodes a member of the A-kinase anchoring protein (AKAP) family. These proteins are characterized by their ability to bind to the R subunit of protein kinase A (PKA) and anchor the protein at different subcellular locations. This protein has been shown to regulate apoptosis and to be involved in palatogenesis. Knockdown of this gene has been associated with altered histone modifications and reduced expression of developmental genes in mouse embryonic stem cells. Alternative splicing results in multiple transcript variants. [provided by RefSeq, Mar 2015]

Product images:



Circular map for MR215718L3