

Product datasheet for MR215672

Dusp27 (NM_001160049) Mouse Tagged ORF Clone

Product data:

Product Type:	Expression Plasmids
Product Name:	Dusp27 (NM_001160049) Mouse Tagged ORF Clone
Tag:	Myc-DDK
Symbol:	Dusp27
Synonyms:	C130085G02Rik; Gm209
Mammalian Cell Selection:	Neomycin
Vector:	pCMV6-Entry (PS100001)
E. coli Selection:	Kanamycin (25 ug/mL)
ORF Nucleotide Sequence:	>MR215672 ORF sequence Red=Cloning site Blue=ORF Green=Tags(s)

TTTTGTAATACGACTCACTATAGGGCGGCCGGAATTCGTCGACTGGATCCGGTACCGAGGAGATCTGCCGCCCGCATCGCC

ATGGCTACCGGTGGAGACGCAGAGGAGGAGCAGGTAGTTCCAAACGAGGAGGATGAAGCAGATGTGAGAGCTGTACAGGCCCGCTATCTCCGGAGTCCCTCCCAAGCCAGTACTCGGTGGTCTCAGAGGCAGAAACCGA AAGCATCTTCATGGAGCCCATCCACCTCTCCTCGGCTGTAGCTGCCAAACAGATCATCAACGAAGAACTC AAGCCTCGGGGGCTCAGAACAGACACTGAGTGTCCAGGCATGCTGGAGTCTGCTGAACAACCTGCTGGTGG AAGACCTGTACAACCGTGTCCGTGAGAAGATGGATGACAGGAGCCTGTTCAACACCCCTGTGTGCTGGA CCTGCAGCGGGCGCTGACCCAGGACCGCAAGAGGCCCTCGGAATGAGGTGGATGAGGTGTGGCCCAAC GTCTTCATAGCTGAGAAAAGCGTGGCTGTGAACAAGGGGCGGCTCAAGAGGCTGGGCATACCCACATTC TGAATGCCGCACATGGCACAGGAGTTTACACTGGTTCTGAATTCTACACTGGCCTGGAGATCCAGTACCT GGGGGTGGAAAGTGGATGACTTCCCAGAGGTGGACATCTCCCAACATTTCCGGAAAGCAGCTGAGTTCCCT GACGAAGCTCTGCTGACCTACAGAGGAAAAGTCCGGTACGAGTGAATGGGTATCAGCAGGTCAGCAG TGCTGGTGGTGCCTACCTGATGATCTCCACAGCATGGCCATCCTGGAGGCCTGATGACTGTGCCGAG AAAGCGAGCTATCTACCCAATGACGGCTTCTAAAACAACCTGCGGGAGCTCAATGAGAAATTGATGGAG GAGAGGGAAGAGGAGGATGGTGAAGAGGAGTCTGAGGAAGATGCCACTAGCCACTGAGTGGCTCCTCCTTGGGGAAGGCCAG ATTCAGTATGGTGAAGAAGAAGATGATGCCACTAGCCACTGAGTGGCTCCTCCTTGGGGAAGGCCAG CCAGGTCTCCAAACAGTCACTCTTATTGATGACGAGGAGGAGGAGAAGAAGCTGTATGAAGAGTGGAGG AAGGGGACAGGCTTCCCAAGGGGGAGGCTGCTCAGGGTAGAAAGGGACGTAGCTGTTCTATGTCCTCAG CACAGGATGGAGACGACTGTGAGGATGAGGATGTAGAAAGGATAATCCAGGAGTGGCAGAGCCGAAATGA GAGGTACCAAGCCAAAGGGCGCAGCAGTGAACCGGGAGGAAGAAGAGGAGGAAGAGAAGTCTACTCC AGCAGAAGGCGCAGACACACCCTAAGCGAGAGCAGTGTCTGAGAGTGTGAGCAGCATGACATCCGGA TCCTGAAGCAGCAACTGGAGAGGAGCACCCAAAGCCGCCGGAAGATACCGCTCTGACTCGGAGTCCCT GGAGAGCACCTGGGACATGTGGAACGAGAGGCTGGTGGAGATCGAGAAGGAGGCTGCCCGGAAGTACCGC



[View online >](#)

TCCAAGAGCAAGAGGGAGGAGCTGGATGGCGATTGTTTCAGAGGCAGGGGGCAGGGTCCGAGAGGACGATG
AGGAGAGCGTGTGTCTGAGGCCAGCTCCTTCTACAACCTCTGCAGTAGGAACAAGGACAAGCTCACTCC
CCTGGAAGGTGGAAGATTAAGAGAATCCAATTTGGGTTTCAACAAGAAAGACTCGGAGGCGGGAGACGGG
GGCAGTGAGCATGGTACAGAAGAGGCAGCAGCAGGAGAGAAGAACCTCTCTGATGTCAACCTGACAGCCT
ACCAGGCCTGGAAGCTGAAGCACCAGAAAAAGGTGGGGAGTGAGAACAAGGAGGAAGTGGTTGAGATGAG
CAAAAGGAGAAGACACGGTCTTGGCTAAGAAGAGACAGCGGAGACTAGAGTTACTGGAGAGGAGCAGGCAG
ACACTGGAGGAGAGTCAGTCCATGGGAAGCTGGGAGGCAGACAGCTCAACAGCCAGCAGGAGCATCCCC
TGTCTGCATTCTCGTCCGCGGCCCTTCTGTCAAGTGGGACACTGCGTCACTACTCAGCACCCCA
GAGCCACCGTTTCTCATGCAAGTAAACATGCCCGCCACCCCTGCCTAACCTGCCGGTGGGGCCTGGAGAC
ACCATTTCCATTGCCAGTATCCAGAACTGGATTGCCAATGTCGTCAATGAAACCTCGCCAGAAGCAAA
ACGAAATGCTCTTGTGTCCCGCCACCCTCTGTTGCAAGCATGAAGGCAGCTCCAGCAGCCTGCGGCCCT
TGGGGGGGATGACCAGCTCTCCGTGCTCAGCACCTCCCTGAGTGGCTGCTTACCACCTCCAAGCCAAGGG
AGACCCAGCTCCGACGTGCAGTCTGTGCTCCTCCACCAGCTCGCTGACCTCCAGGGCTGAAGGCAGTG
GGAACAAAGTGAAGGGGACCAGCAAGCCATCTACAGCCTCTTTGCTGACAACGTGGACCTGAAGGAGCT
TGGCCGGAAGGAGAAAGAGATGCAAATGGAGCTGCAGGAGAAGATGTCCGAGTATAAATGGAGAAGCTG
GCCTCTGATAACAAGCGTAGCTCTCTTCAAGAAGAAGAAGCCAAGGATGACGAGGACATGAGCGTGG
GTGACAGAGACGAGGACACAGACAGTGCATCGGAAGCTTCCGGTACTCCTCTCGCAGTAATTTCCAGAA
GCCGGAGACAGATGCCTCCTTCTCTGGCCATCTCTGATCACTATAGAAATGGCCGAGCATGGGTAAC
GAGATGGATAGCAATATTAATACGTGGCTCAGTGGCCTCAGGATGGAAGAAAAATCTCCTCCTCAAAGTG
ATTGGTCCGGAAGTTCAGGGGGAGGTATACCAGGTCTTCTCTGCTCCGGGAAACAGAGTCTAAATCCTG
CAGTTACAAGTTCTCAAATCTAGGTACAGGAGCAGGACACCTCCTCCACGAAGCCAATGGTGACACT
GTGCGAAACACCTCACGGTCTCATCTTCCACCACCAAGGAGGCCAGAGAGATGCACAAGTTCTCTCGGT
CCACATTCAGCGAGACCTCGAGCTCCCGAGAGGAGAGGCCAGAACCTATTTCTTCCGCGGACCCCTGA
ACCCTCTGATGGGGAGGAGTCCCCAGAGCAAGGCGTCCAAACTGGACCAGGCCAGGGACTGGGAAGAT
GTAGAAGAGTCATCTAAATCAGACTTCGCTGAGTTTGGGGCCAAGAGGAAATTCACCCAGAGCTTCATGA
GGTCTGAAGAGGAGGAGAGAAGGAGAGGACAGAAAACCGAGAGGAAGGGAGGTTTGCATCTGGGCGTCA
GTCCCAGTATCGGAGAAGCACAACCAGCAAGAGGAAGAAGAAATGGATGATGAAGCCATCATTGCCGCC
TGGAGAAAGCGGCAAGAGGAAACCAAGAACCAACTGCAAAGGAGGAGGGAGGAC

ACGCGTACGCGGCCGCTCGAGCAGAACTCATCTCAGAAGAGGATCTGGCAGCAATGATATCCTGGATT
ACAAGGATGACGACGATAAGGTTTAA

Protein Sequence: >MR215672 protein sequence
 Red=Cloning site Green=Tags(s)

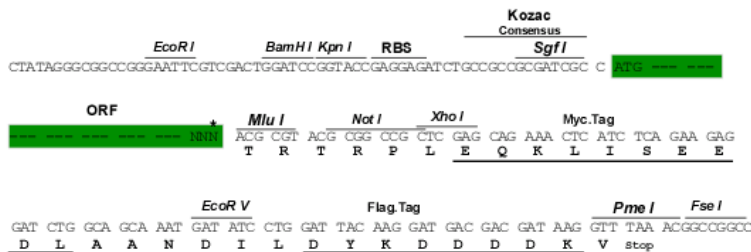
MATGGDAEEEEQVVPNEEDEADVRAVQARYLRSPSPSQYSVVSEAEETESIFMEPIHLSSAVAAKQIINEEL
 KPRGLRTDTECPGMLSEAEQLLVEDLYNRVREKMDDRSLFNTPCVLDLQRALTQDRQEAPRNEVDEVWPN
 VFIAEKSVAVNKGRLKRLGITHILNAAHGTGVYTGSEFYTGLEIQYL GVEVDDFPEVDISQHFRAAEFL
 DEALLTYRGKVLVSSEMGISRSVAVLVAYLMI FHSMAILEALMTVRRKRAIYPNDGFLKQLRELNEKLME
 EREEEDGEEESEEDAGSMLGARVNSLMVEEEDDATSHLSGSSLGKASQVSKPVTLLIDDEEEEEKLYEEWR
 KGQGFPGKEAAQGRKGRSCSMSSAQDGDCEDEDVERIIQEWQSRNERYQAKGREQWNREEEEEENSYS
 SRRRRHTLSESSASESVSSHDIRILKQQLERSTQSRGRYRSDSESSESTWDMWNERLVEIEKAARKYR
 SKSKREELDGDCSEAGGRVREDDEESVLSASSFYNFCSRNDKLTPLERWKIKRIQFGFHKKDSEAGDG
 GSEHGTEEAAGEKNLSDVNLTA YQAWLKHQKVGSENKEEVVEMSKGEDTVLAKKRQRRELLERSRQ
 TLEESQSMGSWEADSSTASRSIPLSAFSSAAPSVSADGDTASVLSQSHRSHASNMPATPLPNLPVGP GD
 TISIASIQNWIANVVNETLAQKQNEMLLLSRPPSVASMKAAPAACGLGGDDQLSVLSTSLSGCLPPPSQG
 RPSSDVQSVLSSTSSLTSRAEGSGNKVRGTSKPIYSLFADNVDLKELGRKEKEMQMELQEKMSEYKMEKL
 ASDNKRSSLFKKKKAKDDEDMVSGDRDEDTDSAIGSFYSSRSNSQKPETDASSSLAISDHYRNGRSMGN
 EMDSNINTWLSGLRMEEKSPQSDWGSRRGRYTRSSLLRETESKSCSYKFSKRSRQEQDTSFHEANGDT
 VRNTRSFSSSTTKEAREMHKFSRSTFSETSSSREESPEPYFFRRTPEPSDGEESPEPRRNWTRPRDWD
 VEESKSDFAEFGAKRKFQSFMRSEEEGEKERTENREEGRFASGRQSQYRRSTNQEEEEEMDEAIIAA
 WRKRQEE TRTKLQRRRED

TRTRPLEQKLISEEDLAANDILDYKDDDDKV

Restriction Sites:
 Cloning Scheme:

Sgfl-MluI

Cloning sites used for ORF Shuttling:

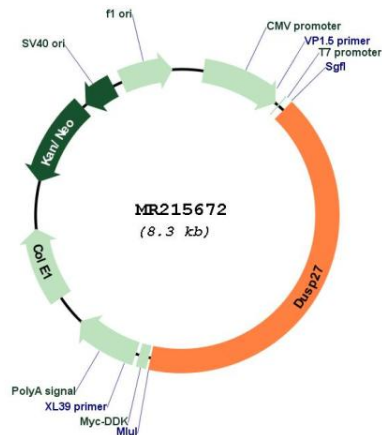


* The last codon before the Stop codon of the ORF

ACCN: NM_001160049

ORF Size: 3417 bp

OTI Disclaimer:	The molecular sequence of this clone aligns with the gene accession number as a point of reference only. However, individual transcript sequences of the same gene can differ through naturally occurring variations (e.g. polymorphisms), each with its own valid existence. This clone is substantially in agreement with the reference, but a complete review of all prevailing variants is recommended prior to use. More info
OTI Annotation:	This clone was engineered to express the complete ORF with an expression tag. Expression varies depending on the nature of the gene.
Components:	The ORF clone is ion-exchange column purified and shipped in a 2D barcoded Matrix tube containing 10ug of transfection-ready, dried plasmid DNA (reconstitute with 100 ul of water).
Reconstitution Method:	<ol style="list-style-type: none"> 1. Centrifuge at 5,000xg for 5min. 2. Carefully open the tube and add 100ul of sterile water to dissolve the DNA. 3. Close the tube and incubate for 10 minutes at room temperature. 4. Briefly vortex the tube and then do a quick spin (less than 5000xg) to concentrate the liquid at the bottom. 5. Store the suspended plasmid at -20°C. The DNA is stable for at least one year from date of shipping when stored at -20°C.
RefSeq:	<u>NM_001160049.1, NP_001153521.1</u>
RefSeq Size:	4038 bp
RefSeq ORF:	3417 bp
Locus ID:	240892
UniProt ID:	<u>Q148W8</u>
Cytogenetics:	1 H2.3
MW:	128.6 kDa
Gene Summary:	May be required for myofiber maturation.[UniProtKB/Swiss-Prot Function]

Product images:


Circular map for MR215672