

Product datasheet for **MR215587**

Kcnh6 (NM_001037712) Mouse Tagged ORF Clone

Product data:

Product Type:	Expression Plasmids
Product Name:	Kcnh6 (NM_001037712) Mouse Tagged ORF Clone
Tag:	Myc-DDK
Symbol:	Kcnh6
Synonyms:	m-erg2
Mammalian Cell Selection:	Neomycin
Vector:	pCMV6-Entry (PS100001)
E. coli Selection:	Kanamycin (25 ug/mL)



[View online »](#)

ORF Nucleotide Sequence:

>MR215587 representing NM_001037712
 Red=Cloning site Blue=ORF Green=Tags(s)

TTTTGTAATACGACTCACTATAGGGCGGCCGGGAATTCGTCGACTGGATCCGGTACCGAGGAGATCTGCC
 GCC**CGGATCGCC**

ATGCCAGTCCGCAGGGGCCACGTTGCTCCCCAAAACACTTACTTGGACACCATCATCCGCAAGTTTGAGG
 GCCAGAGTCGTAAGTTCCTGATTGCCAATGCACAGATGGAGAAGTGTGCCATCATCTACTGCAATGATGG
 CTTCTGCGAACTCTTCGGCTACTCCCGTGTGGAGGTGATGCAGCGACCCTGTACCTGTGACTTCCTCACT
 GGCCCGAACACTCCGAGCAGTGTGTGCCCGCTGGCGCAGGCCCTGCTGGGGCTGAAGAGTGAAGG
 TGGACATCTCTACTATCGCAAGGATGCCTCCAGCTTCCGCTGCCTGGTGGATGTGGTCCCTGTGAAGAA
 CGAGGATGGGGCTGTATCATGTTTCATCTCAATTTTCGAGGACCTGGCCAGCTCCTGGCCAAGAGCAGC
 AGCCGACGCTGACCAACGTTTGTGTACACAGCTTCTGGGCTCTGAGGGCTCTCACAGCAGGCCAA
 GCGGACAGGGCCTGGTCCAGGCAGGGCAAGTATGGAAGTGCAGCCAGATCCCGCAGTTCACGCTCAG
 CTTTGTGGAGTTCACCTGGAGAAGCACCGCTCAGGCTCCACCACAGAGATTGAGATCATCGCTCCCCAC
 AAGGTGGTGGAGCGGACACAGAATGTCACTGAAAAGGTACAGCAGGTCCGTCCCTGGGTGCAGATGTGC
 TGCCAGAGTACAAGCTGCAGGCACCGCGCATTACCGAGGTACCATTCTGCACTACAGCCCTTCAAGGC
 TGATATGGGACTGGCTCATCTTGCTTTAGTCATCTATACAGCGGTCTTACGCCCCTACTCTGCTGCCTTT
 CTGCTTAGCGACAGGAGCAGTACAGCGTGGTACCTGCGGCTATACCTGCAGCCCGCTCACCGTGGTGG
 ACCTCATCGTGGATATCATGTTTGTGGTGGATATTGTCATCAACTCCGAACCACTACGTCAACACTAA
 TGACGAGGTGGTCCAGCCACCCCGACGAATCGCCGCTCACTATTTCAAGGGCTGGTTCCTATTGACATG
 GTGGTCCCATCCCTTTGACTTGCTTATCTTCCGCACTGGCTCAGATGAGACCACCACCTGATCGGGT
 TACTGAAGACGGCGCCCTCTACGGCTGGTGGCGCTGGCCGGAAGCTGGACCCTATTCTGAATACGG
 GGCCGCGTACTCTTCTGCTCATGTGTACTTTTGGCGCTCATTGCGCACTGGCTGGCCTGTATCTGGTAC
 GCCATCGCAATGTGGAGCGACCCTACTTGGAGCCCAAGATTGGTGGCTGGACAGCCTGGGCGCGCAGC
 TTGGCAAGCACTATAACGGCAGCGACCCAGCCTCGGGACCCTCTGTCCAAGACAAGTATGTACCCGCCCT
 CTACTTCACTTCCAGCAGCCTCACTAGTGTGGGCTTCGGCAATGTGTACCCCAACCAACTCTGAGAAG
 GTCTTCTCTATCTGCGTCATGCTCATTGGCTCACTTATGTACGCCAGCATCTTTGGCAACGTGTGGCCA
 TCATCCAGCGCTGTACTCAGGCACGGCTCGTACCACACTCAGATGCTGCGGGTCAAGGAGTTCATCCG
 CTTCCACCAGATCCCAACCCACTGAGGCAGCGCTGGAAGAGTATTTCCAGCACGCTGGTCTACACC
 AATGGCATCGACATGAACGCGGTGCTGAAAGGCTTCCCTGAGTGCCTGCAGGCGGACATCTGCCTGCACC
 TGACCCGCGCTCTGTTGCAGCACTGCCCGCCTTCCGCGCGGCCAGCAAGGGGTGCTGCGCGCGCTCGC
 CGTCAAGTTCAAGACCACGCACGCGCCGCTGGGGACACGCTGGTGCACCTGGGGACGCTGCTTTCCACT
 CTCTACTTCACTCTCCCGCGGCTCCATCGAGATCCTGCGCGATGACGTGGTGGTGGCCATTCTAGGGAAGA
 ATGACATCTTTGGGGAGCCTGCCAGTCTCCATGCCAGACCAGGCAAAATCAAGCGCCGATGTGCGTGCCT
 GACCTACTGCGACCTGCACAAGATCCATCGAGCAGACCTGCTGGAGGTGCTGGACATGTACCCCGCCTT
 GCAGATACCTTCTGGAATAAGCTAGAGGTACCTTCAACTGCGGGACGCAGATGGGGTCTCCACTCAA
 CACCCCGACAGGCCCCAGGCAACCAAGACCCCAAGGCTTCTTCTCAATGACAGCCAATCAGGTGCTGC
 CCTTCCCTGAGCATTTCAGACACATCTGGCTTTGGCCTGAATTGCTACAGCAAATGCCCAAGTCCC
 CCAAACCCACGAGAGAAGCTGGATTGCTGGCCTCGGGAGCTAGGCTTTAAGTTAGAACAGCTCCAAGCCC
 AGATGAACAGACTGGAGTCCCGCGTGTCTGTCAGACCTCAGCCGCATCCTACAGCTACTTACGATCCACA
 GGGCCACCCCGGTACATCTTGGGGGCCCTGCCTCCAGTGACCTGGCCTTGTTCCTGAAACTTCAGTG
 ACTCAGAGTTCAGAGTCGATGCTTCTGGTGGGACATCTGCCCTCTGCACAGACCCTAAGCTATGGTGATT
 TGGACAAACATATCCGGATGCCAGGAATTTCTCCCCAGGATACCTCACGTGGCCGCGGCAATGGACAA
 ATCTCTGGTGGCGTCTCAGAACAAGAGCAGCCCAAGGGGCTCCTGTACCTCTGGCCTCACCTCTGTGT
 CCCCTGGAAGTACAGGACTGGGTGGTCCCACTTTTCTCCCTCCCTGAACACCTCAGTCCGTTCCCA
 AGCAGCTGGAATCCAGAGACACGGTTCAGATCCTGGATTACAAGGAGT

ACGCGTACGCGGCCGCTCGAGCAGAACTCATCTCAGAAGAGGATCTGGCAGCAAATGATATCCTGGATT
 ACAAGGATGACGACGATAAGGTTTAA

Protein Sequence: >MR215587 representing NM_001037712
 Red=Cloning site Green=Tags(s)

MPVRRGHVAPQNTYLDTIIRKFEQSRKFLIANAQMENCAIICYNDGFCELFGYSRVEVMQRPCTCDFLT
 GPNTSSAVSRLAQALLGAECKVDILYYRKDASSFRCLVDVVPVKNEGAVIMFILNFEDLAQLLAKSS
 SRSLTQRLLSHSFLGSEGSRSRPSGGQPGRGRKYGTVSQIPQFTLSFVEFNLEKHRSGSTTEIEIIAPH
 KVERTQNVTEKVTQVLSL GADVLPEYKLAQAPRIHRGTILHYSFPKAVWDWLILLVIYTAVFPTPYSAAF
 LLSQDQDSQRGTGTYCSPLTVVDLIVDIMFVVDIVINFRITTYVNTNDEVVSHPRRIAVHYFKGWFLIDM
 VAAIPFDLLIFRTGSEDETTTLIGLLKTRALLRLVRVARKLDRYSEYGA AVL FLLMCTFALIAHWLACIWIY
 AIGNVERPYLEPKIGWLDLGAQLGKHYNGSDPASGPSVQDKYVTALYFTFSSLTSVGFGNVSPNTNSEK
 VFSICVMLIGSLMYASIFGNVSAIIQRLYSGTARYHTQMLRVKEFIRFHQIPNPLRQRLEEYFQHAWSYT
 NGIDMNAVLKGFPECLQADICLHLHRALLQHCPAFRGASKGLRALAVKFKTTHAPPGDTLVHLGDVLS
 LYFISRGSIEILRDDVVVAILGKNDIFGEPASLHARPGKSSADVRLTYCDLHKIHRADLLEVLDMYPAF
 ADTFWNKLEVTFNLRDADGGLHSTPRQAPGNQDPQGGFFLNDSSQGAAPSLISDTSGLWPELLQMPSP
 PNPREKLDWPRELGFKLEQLQAQMNRLSRVSSDL SRILQLLQHPQGHPIYILGAPASSDLALFPETSV
 TQSSSEMLLVGHLPQAQTL SYGDLDKHIRMPNFRSPRI PHVAAAMDKSLVPSSEQEQPKGLLSPLASPLC
 PLEVQGLGGPHFSSSPEHLSSVPKQLEFQRHGSDPGFTRS

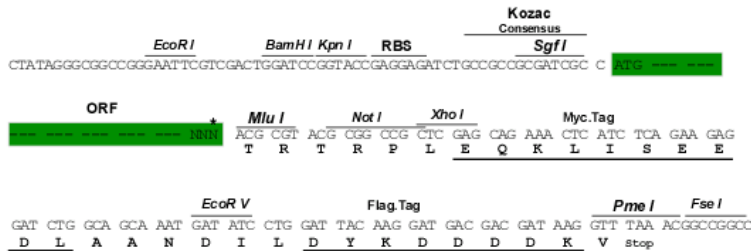
TRTRPLEQKLISEEDLAANDILDYKDDDDKV

Chromatograms: https://cdn.origene.com/chromatograms/mm9002_g07.zip

Restriction Sites: SgfI-MluI

Cloning Scheme:

Cloning sites used for ORF Shuttling:



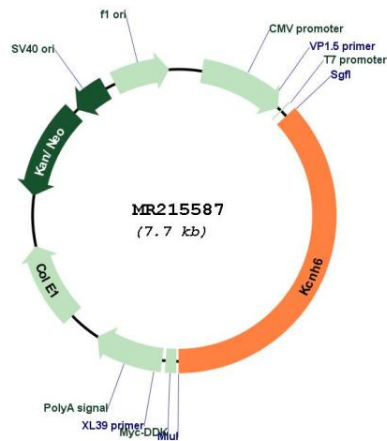
* The last codon before the Stop codon of the ORF

ACCN: NM_001037712

ORF Size: 2850 bp

OTI Disclaimer:	The molecular sequence of this clone aligns with the gene accession number as a point of reference only. However, individual transcript sequences of the same gene can differ through naturally occurring variations (e.g. polymorphisms), each with its own valid existence. This clone is substantially in agreement with the reference, but a complete review of all prevailing variants is recommended prior to use. More info
OTI Annotation:	This clone was engineered to express the complete ORF with an expression tag. Expression varies depending on the nature of the gene.
Components:	The ORF clone is ion-exchange column purified and shipped in a 2D barcoded Matrix tube containing 10ug of transfection-ready, dried plasmid DNA (reconstitute with 100 ul of water).
Reconstitution Method:	<ol style="list-style-type: none"> 1. Centrifuge at 5,000xg for 5min. 2. Carefully open the tube and add 100ul of sterile water to dissolve the DNA. 3. Close the tube and incubate for 10 minutes at room temperature. 4. Briefly vortex the tube and then do a quick spin (less than 5000xg) to concentrate the liquid at the bottom. 5. Store the suspended plasmid at -20°C. The DNA is stable for at least one year from date of shipping when stored at -20°C.
RefSeq:	<u>NM_001037712.2</u>
RefSeq Size:	2853 bp
RefSeq ORF:	2853 bp
Locus ID:	192775
Cytogenetics:	11 E1
MW:	106 kDa

Product images:



Circular map for MR215587