

Product datasheet for MR215486

Lmo7 (NM_201529) Mouse Tagged ORF Clone

Product data:

Product Type:	Expression Plasmids
Product Name:	Lmo7 (NM_201529) Mouse Tagged ORF Clone
Tag:	Myc-DDK
Symbol:	Lmo7
Synonyms:	C78582; FBXO20; Gm914; mKIAA0858
Mammalian Cell Selection:	Neomycin
Vector:	pCMV6-Entry (PS100001)
E. coli Selection:	Kanamycin (25 ug/mL)
ORF Nucleotide Sequence:	>MR215486 representing NM_201529 Red=Cloning site Blue=ORF Green=Tags(s)

TTTTGTAATACGACTCACTATAGGGCGGCCGGAATTCGTCGACTGGATCCGGTACCGAGGAGATCTGCC
GCCCGATCGCC

ATGGAAGGGATGGAGGACGCCGAGGCCGATTGCTCTGTTGCATTGCGAGAGGCTCAGAGATGGGTGGAGG
CTGTAAGTGAAGAATTTTGAACAACGGATTTTCGAGCCTCTCTAGAAAATGGTGTCTGTTGTGCGA
CTTGATTAATAAGCTCAAACCTGGCGTCGTTAAGAAGATCAATAGACTGTCTACCCCAATAGCAGGTTT
GATAACATAAATGTTTTTTGAGAGCTTGTGAACAGATTGGATTGAAAGAAGCCAGCTTTTTTCATCCGG
GGGATCTACAGGACTTATCAAACCGAGTACCCTCAAGCAAGAAGAGACTGACAGGAGACTGAAAAATGT
TTTGATAACTTTGTACTGGCTGGGAAGAAAAGCACAAGTAACCCCTACTATAATGGTCCCTATCTCAAT
TTGAAAGCTTTTGTAGACTCTTTTAGGGCAAGCTTTGACTAAGGCACTTGAAGATTCCAGTGCCTGAAAA
GAAGTGGCCGGGACAGTGGCTACGGGGACATCTGGTGTCTGACAGAGGAGAATTTCTGCCCTCCAGG
TAGCCACAGAAGGGAAGATTCTTTGAGAGCTTGGACTCGCTGGGGTCCAGATCTCTGACCAGCTGTTCC
TCAGACTTCACTCTGAGAGTTGGGAAGGAAGTTGCGAAAGTGACATCGATTGGGAATTTACATTCAAAA
TGCAGGATTACAACAAGATGATATGTCCTACCGAAGGATTTTCAGCCATTGAGCCAAAGTCAGCTCTCCC
GTTCAATCGTTTTCTTGGCAACAAAAGCAAGCAGCCGTCCTATGTCCAGCACCTTTGAGGAAGAAGAGG
CCAGACAAACACGAGGATAACAGGAGGAGCTGGCAAGCCGGTCTACACAGAAAACAGACGGAACATTTT
CAAGTACCCAGAGGAGAACCTGGGGTCCCAAGATGGAGACTGGCACACAGTCCAAGAAAATTTCCACCTC
TTCTTGGTGTGTAGAAGAGGAAGAGGAAAAGCTCACGCGCATGCCCAACATTGTGAAGGATGATCTGTAT
GTGCGGAAGCTTAGCCCCGTATGCCAAGTCCAGGGAGCTTTTTGATCAGTTCTTCCCAAATGTTGGA
CTCCAGAAGATATGAACTGGAAAAAATTTAAAAGAGAGACTTATAAGCCATGGTATAAGGAATTTTCAGG
ATTCAGTCAGTTTTTATTGCTTCAGGCCCTCCAAACCTACTCTGATGACATCTTGTCTCGGAAACAAGT
GTCAAACCTCGATCCTACCTCTGGCCCCAGGCTCATAACTCGCAGGAAGAATCGCTCTCCCGCACCAGGCT
ATCGAGCCATGACCTTGAGCTGCCAGCCCTAGATCCCGACTTAGAAAATGATGATTTCTTTGTCAGAAA
AACAGGGGCTTTCATGCAAATCCGTGTGTCCTTCGAGCCTTTGAAGACTTTAGAAGTTTCTCGGAGCCA



[View online »](#)

GACGATGCCGTGGAACGAGATATAATTTTGCAGTGTCCGGGAAGGTGAACTCGTACTTCCAGATTTAGAAA
 AGGATGATATGATTGTCCGCAGGATTCCAGCTCAGAAGAAAGAAGTGCCCTTTCTGGGGCCCCGGATAG
 GTACCAGCCAGTCCCTTTCCCTGAACCTGGACCCTACCTCCAGAAAATCCAAGCGAAGTTTCTCTGTG
 CTCGAAAGGACACGCCACCCAAAGAACAAGCAGCGGCTGTAGAGTGTAGTCCCTTCTATCGACAGA
 AGAAAGACGACATGTTGGCTCGCAAGATCCAGTCTTGAAGCTGGGGACTGCTGTACCTCCCATCAGTTT
 CAAGCTGGCCCCCTGCAGCGAGGCCGACCTGCAGAAAGTGGAGGCCATCTGGGAGGCCAGCAGGCTTAGG
 CACAGGAAGCGGCTGATGGTTGAGAGACTCTTTCAAAGATCTATGGTGAGAATGGGAGCAAGTCCATGA
 GCGATGTACGCGCAGAGGATGTTTCAAGACTGCGTCAGGTGCGCTACGAGGAGATGCAGAAAATAAAATC
 CCAGCTGAAAGAACAAGATCAGAAAATGGCAGGATGACCTTGCAAAAATGGA AAAACCCGCCGGAAGAGTTAC
 ACTTCAGATCTGCAGAAGAAAAAGGAAGAGAGGGGAAGAGATTGAGAAGCAGGCACTGGAGAAGTCTGACC
 GCAGCTCCAAGACATTTAGGGAAATGCTGCAGGACAGGGAAATCTCGAGGTTCTACAGTTACGTTCTGGAG
 GAGGACCTATTCTCTGATGACATCCTCGATGATGGAGTGTCCCTCTACAGTACTCTGTGAGAACT
 AGTTACCAGAGCGAGAGACTAGAAGATGAGGCAAGAGCGCATCTGCTGAGATGCCCAAAGAAGATTCCA
 CAACATTTGCAAAATAGAGAGGACAGTGTAGTAGCTGAGACTCAGCTTGTCTCACAGTCTGAAGAGCA
 ACGTCTGGCCCCCTCTCCTTCTGAGGAACCGCCAGGCTCTGGATCTTCTGCAGAACCCGACCAGGCC
 CCGTTGCTGTCCACAGAACCAGCCGGACCCCTTTGCCTTCCGAGGAACACACCAGGCCTCTATCTT
 CTACACTACAGCGTCCATCCTCACTCTTCTCAGCAGTCATGGAGTACAAAGAGCAGAGTCCACTCGGAT
 TTCAGTCTCTCCCTAGAAGTTACCAGAGAACCAGATACAGCCAGGTTAACATCTGTGGTACAGCGAGA
 CCTTTTGGCAGATCTTCAAGGGGAATCTCCTCACTGCCAGATCTACACGATGGATGATGGCTGGAAAT
 ACAACGGAGATGTTGAAGTTGTCAAGAGAGAGCAACTCGATTTGGGCAGAGCCACTGGCCCGAAGCTGA
 CTCCAGCCACTTTATTTCCGGCTCAGCCAGTGAGAAGGAGGTATAGCCACAGAAGATGTGGCAAGCTTG
 TCCTCTCCCACTCCCTTCTCATCTCTCTCCACAGCCGGGCAGTCTTCCAAAGCCACGTTCTCAT
 CAATGTCTGGTTTGGATTCAAGTGTACTCTGGAGAAGGAAGAGGCTCACCATTGAGGGAAGTTCCAG
 GTCCCTGGATCAGTTCAGCGATATGAGAGTCAGCATAAACCCAGACGCCCGGGAACAAACCTGTCTTTGGG
 TTTACGATAAAAATGGGATATTTCTGGGATCTTCTGATCAGTCGAAACAAGGTAGCCCAGCAGAATTTT
 CTCAGTGCAGGTAGATGATGAAATTTGCCATCAATAACACCAAGTTTTTATATAAGGATACAAAAAA
 GTGGGAGGAAGTTATGGCAAACGCCAAGAAACTGGAACTTAGTGATGGACGTCCGGCCTTACGGAAAAG
 TCTGGTTCATCTGAAACAAAGTGGATCGATACAACATCAGGAATTTACAACCTCAGACAAGTCTTCAAGT
 TATCAGTCACAAGTATTTCTGAAAGCCTTCAAGTCTTATACTGAATCCAAAGAAGTCAATGGAAT
 TCACGAGGAAAGTAACCCCTTTGATTCAAAGCATCAGAAATCCATTTCTTTGAAAAATTTAAAAAGCGA
 TACAATTTTTTGAACAAGGAAGCTCGGATCTGTGGCCCCGATCTTCCAGTTCACCCCTCAGTGCCC
 CGAGTCGCTGGGCTTGGGATCAAGAGGAGGAGAGACGGAGGCAGGAGCGGTGGCAGAAAGAGCAAGATCG
 CCTATTGCAGGAAAAATACCAGCGTGAGCAGGAGAAGCTGAGGGAGGAGTGGCAGAGAGCCAAACAGGAG
 GCGGAGAGAGAGAATCCAAGTACCTGGATGAGGAGCTGATGGTCTAAATTTCAACAGCATTTCTCTGA
 CCTCCCGGAGCCTGTGGCCGCCACCTGGGAAGCCACGTGGAGTGAAGGGTCCAAGTCTCTGGACAGCGA
 AGGCACCCGAGCGGGAGAGGAGGACAGGGGACAGCTGGAAGACGATGCTGTGATGAGGACCAAAGTCAG
 AAGCTGCAGGAAGTGTGAGCAGGAGAAGAAACGGAAGGAGCAAGAGGCTCAGGAAGAGGAGCGCCGCAAGC
 AGCGGGAGGCCAGGCCCTGGGCAGAGGCAGAAGCTAAGGCTTGGCGGAGGCCAGGCTCGGGCAGAGGC
 AGAAGCTAAGGCTCGGGCGGAGGCCAGGCCGGGCAGAGGCTGAGGCTCAAAAACGAGCTGAAGCTCAG
 AAGCTCCAGGCAGAGAGGGAACGTGAAACGTCCGTCAAAAATATACCAGTACCGAAGGCCATTGATTCTT
 ACGACCTACCAAAGAGAGAAGACGACACTTCAGGGATGCTTCCAACCTGACAGGAGTAAATCAAGATCTAC
 TACGGAATAAATGACCCCTCATAGAGAAAAATGGAAGCAGCAAAATATTCAGAGAGAATTTGGGCCACT
 AGCTTTTACATAGGAGTTCTAAGAAGGATCAAGCCCCCTCAGAAGCAGAGTTGGAGAGACAGCAAAATCC
 TTCAGGAAATGAGGAAGAGAATCTCTCCACAATGACAACAGCTGGATCCGACAGCGCAGCGCCAGTGT
 GAACAAGGAGCCCATCTGCCTGCCTGGGATCATGAGGAGAGGGGAGTCTCTGGACAATCTGGATTCCCAG
 CGGCCGGTCTTGGAGGCAGTCCCCTTGGCACAGCCAGCCTGCCGGGTCTATGCGTCTTCTCTGTCC
 AGGACTTCAGTCGCCCCCACCCTCAGCTGTTGTCTACATCAAACCGTGCCTACATGCGGAACCCATCCTC
 TGCGGTGCCACCTCCAGCCGGCTCTGTGAAGACCTCCCCAGGGTCTCCCTCTCCAGCAGCCATTCCCTT
 TCCATGTCACAGTCAGGCTCTCAGCTACGGAATAGGTCAGTGAGTGGGAAGCGTGTGTGCTCCTACTGTA
 ATAACATTTCTGGGCAAAGGAGCCGCCATGATCATCGAGACCCTGGGTCTTTCTTATCATTACATTGTTT
 TAAGTGTGTCTCTGTGGGTGTGACCTCGGAGGCTCTTCTCAGGAGCTGAAGTCAGAAATCCGAAACCCAC
 CAACTCTACTGCAATGACTGCTATCTCCGATTCAAATCTGGACGGCAACCCGCTATG

ACGCGTACGCGGCCGCTCGAGCAGAACTCATCTCAGAAGAGGATCTGGCAGCAATGATATCCTGGATT
ACAAGGATGACGACGATAAGGTTAA

Protein Sequence:

>MR215486 representing NM_201529
Red=Cloning site Green=Tags(s)

MEGMEDIAEDCSVAFEAQRWVEAVTEKNFETDFRASLENGVLLCDL INKLKPGVVKKINRLSTPIAGL
DNINVFLRACEQIGLKEAQLFHPGDLQDL SNRVTVKQEE TDRRLKNV LITLYWLGRKAQSNPYNGPYLN
LKAFETLLGQALTKALEDDSSCLKRSGRDSGYGDIWCPDRGEFPAPPGSHRREDSFESLDSLGSRLTSCS
SDFTLRVKGEGCESDIDWEFTFKMQDYNDMSYRRISAIEPKSALPFNRFLPNKSKQPSYVPAPLRKKR
PDKHEDNRRSWASPVYETDGTFSSTQRRTWGPKMETWHTVQETSTSSWCVEEEEEKLRMPNIVKDDL
YVRKLSPVMPSPGSSFDQFLPKCWTPEDMNWKIKRETYKPYWKEFQGFSQLLLQALQTYSDDILSSETS
VKLDPTSGPRLITRRKNRSPAGYRAHDEL PALDPDENDDFFVRKTGAFHANPCVLR AFEDFRSFS
DDAVERDIILQCREGELVLPDLEKDDMI VRRIPAQKKEVPLSGAPDRYQVPVPEPWTLPPEIQAKFLSV
LERTRPPEQSSGCRVLPSPYRQKDDMLARKIQSWKLGTA VPPISFKPGPCSEADLQKWEAIWEASRLR
HRKRLMVERLFQKIYGENGSKSMSDVAEDVQNL RQVRYEEMQIKSQLKEQDQKWQDDLAKWKNRRKSY
TSDLQKKKEEREEIEKQALEKSDRSSKTFREMLQDRESRGSTVTSWRRTYSSDDILDGGLPPTVTLSET
SYQSERLEDEARAHPAEMPKESTTFANREDSVAETQLASHSPEEQRLAPSPSEEPQASGSSAEPHQA
PLLSTEP RRTPLPSEEPHQASL SSTLQRPSSLSSQSWSTR AESTRISASLPRSYQRTDARLTSVVTAR
PFGTSSRGISSLPRSYTMDGWKYNQDVEVVKREQLDLGRATGPKPDSSHFI SSGSASEKEVIATEDVASL
SSPTLPSSSLSHDRAVSSKATFSSMSGLDSVSDSGEGRGSPLREVSRLDQFSDMRVSI NQTPGNKPVFG
FTIKWDISGIFVASVEQGS PAEFSQLQV DDEILAINNTKFSYKDTKKWEEV MANAQETGNLYMDVRRY GK
SGSSETKWIDTTSGIYNSDKSSLSVT TDFSESLQSPYTESKEVNGIHEESNPFDSKASESISLKNLKR
R SQFFEQGS SSVAPDLPVPTLSAPSRAW DQEEERRRQERWQKEQDRLLQEKYQREQEKLREEWQRAQQE
AERENSKYLDEELMVLNSNSISLTSREPVAATWEATWSEGSKSLDSEGTRAGEEDRGQLEDDAVYEDQSQ
KLQLEQEKKRKEQEAQEEERRKQREAAWAEAEAKAWAE AQARAEAEAKARAE AQARAEAEAKRAEAQ
KLQAERERETSVKIYQYRRPIDSYDLPKREDDTSGMLPTDRSKSRSTTELNDPLIEKNGSSKYSERIGAT
SFSHRSSKKDQAPSEAE LERQQILQEMRKRTSLHNDNSWIRQRSASVNKEPICLPGIMRRGESLDNLD SQ
RPGSWRQSPWHSQPAGVYASSSVQDFSRPPPQLLSTSNRAYMRNPSSAVPPPAGSVKTPSGSPSPRSHSP
SMSQSGSQLRNRSVSGKRVC SYCNNILGKGAAMI IETLGLSYHLHCFKCVSCGCDLGGSSSGAEVIRNH
QLYCNDCYLRFKSGRPTAM

TRTRPLEQKLI SEEDLAANDILDYKDDDDKV

Chromatograms:

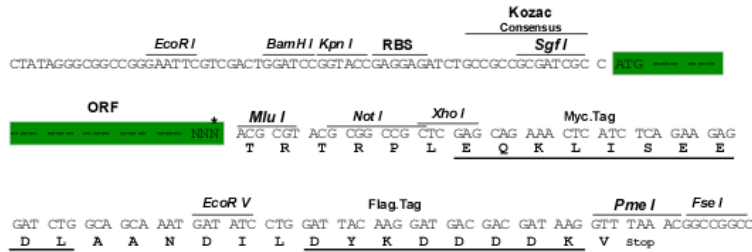
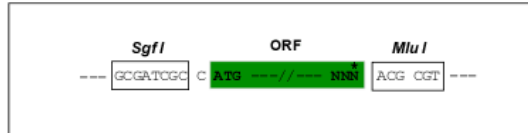
https://cdn.origene.com/chromatograms/mm9105_g05.zip

Restriction Sites:

SgfI-MluI

Cloning Scheme:

Cloning sites used for ORF Shutting:



* The last codon before the Stop codon of the ORF

- ACCN:** NM_201529
- ORF Size:** 5097 bp
- OTI Disclaimer:** The molecular sequence of this clone aligns with the gene accession number as a point of reference only. However, individual transcript sequences of the same gene can differ through naturally occurring variations (e.g. polymorphisms), each with its own valid existence. This clone is substantially in agreement with the reference, but a complete review of all prevailing variants is recommended prior to use. [More info](#)
- OTI Annotation:** This clone was engineered to express the complete ORF with an expression tag. Expression varies depending on the nature of the gene.
- Components:** The ORF clone is ion-exchange column purified and shipped in a 2D barcoded Matrix tube containing 10ug of transfection-ready, dried plasmid DNA (reconstitute with 100 ul of water).

Reconstitution Method:

1. Centrifuge at 5,000xg for 5min.
2. Carefully open the tube and add 100ul of sterile water to dissolve the DNA.
3. Close the tube and incubate for 10 minutes at room temperature.
4. Briefly vortex the tube and then do a quick spin (less than 5000xg) to concentrate the liquid at the bottom.
5. Store the suspended plasmid at -20°C. The DNA is stable for at least one year from date of shipping when stored at -20°C.

RefSeq: [NM_201529.2](#), [NP_963287.2](#)

RefSeq Size: 6123 bp

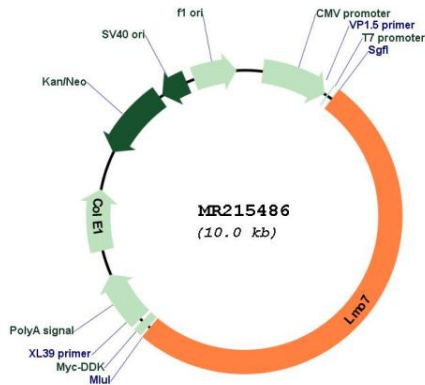
RefSeq ORF: 5100 bp

Locus ID: 380928

Cytogenetics: 14 50.9 cM

MW: 192.6 kDa

Product images:



Circular map for MR215486