

Product datasheet for MR215417

Cgn (NM_001037711) Mouse Tagged ORF Clone

Product data:

Product Type:	Expression Plasmids
Product Name:	Cgn (NM_001037711) Mouse Tagged ORF Clone
Tag:	Myc-DDK
Symbol:	Cgn
Synonyms:	6330408J11Rik
Mammalian Cell Selection:	Neomycin
Vector:	pCMV6-Entry (PS100001)
E. coli Selection:	Kanamycin (25 ug/mL)
ORF Nucleotide Sequence:	>MR215417 representing NM_001037711 Red=Cloning site Blue=ORF Green=Tags(s)

TTTTGTAATACGACTCACTATAGGGCGGCCGGAATTCGTCGACTGGATCCGGTACCGAGGAGATCTGCC
GCC**CGATCGCC**

ATGATGGCTGATCCCCGGGGCCCCGTAGACCATGGAGTCAAATTCGATTTATTACAGAGCCAGAGGGTG
CTACTGAAATGGGCACCCTTCGTCGTAGTGGGCGGCCCTGCAAGGGATGCAAGAGCCAGTACCTATGG
GGTCGCTGTGCGTGTGCAGGGCATCGCCGGGCAACCGTTTGTGGTCTTAACAGTGGAGAGAAAGGGACT
GACTCCTTTGGGTCCAGATCAAAGGGGCAACAACCGGGGTCCCCAGGTGCACTGAGCTCCGATTCAG
AGCTCCCCGAAAACCCCTACTCTCAAGTCAAGGGACGCCCTGCCACTTCTCGGAGCAGCACATCTGATGA
GGAGCCCAAGGACCACTGAATGAAAACTGATCCGTTCCAGTCGCAAGCCTCTCTGACCGGGCTTGCC
TTTATGAGTCCTAGTAATAGGAGCACCAGCTTGCTGGAAGTAGCCCTAAACCGACTTCTCGATTAACA
CCATTGCACTGCCCCCTTGCTTCAGTGGACTCGCTCATCAACAAGTTTGATAGTCAGAAGGGGGGCA
GGTCCGGGGTCCGACTGGGCGCCGACAAAGGACTTCCCACGAACAGCGCAAGCGGAGCCAGAGTCTG
GACAGCAGGCTCCACGGGATACACGTGAGGAACGGGAGCACCAGTCCGTAACCACTGGACCCGGGCA
CAAAGTATGACAACCATGTGGACAGTTCAAAGAAGCCATCGCAGAAGCAGAGCCGTTGAGCAGCTTCAG
CCGTTCCGCTCAGACTCAAGACTGGGTGCTTCAGATTTTGGAGGACACGGGATCCAGCCATGGTGCAG
TTCAAATCAACTCCAGACTTCTCAGAGACCAGAGAGACAGCGCCACCAGGCACTGCGGACCATGTGA
AGGCCACCATCTATGGCATCCTAAGGGAGGGAAGCTCGGAGAGTGAGGCATCTGTGAGGAGGAAAGTTAG
TTTGGTGTGGAGCAAATGCAGCCTCTGGGGATGGTTTCTCCTGCTTCTACCAAGGCCCTGGCAGGACAG
GCTGAGCTTACCCGAAAAATGGAGGAAGTTCAGAAGAAGCTGGATGAGGAGGTGAAGAAGCGGCAGAAGC
TAGAACCATCCAGGGTTGGGCTGGAGAGGCAGCTGGAGGAGAAGGCTGAAGAGTGCCACCGACTGCAGGA
GTTGCTGGAGAGGAGAAAGGGGAGGTCCAGCAGAGCAGCAAGGAAGTTCAGAACATGAAGCTCCTGCTA
GGCCAGGAAGAAGGACTACGGCATGGGCTGGAGGCCAGGTGAAGGAGCTACAGCTTAAGCTCAAGCATA
GCCAGAGTCCCGATTCTGAAAGGAAAGTCTCCTAAAGGACTTGTAGACACCCGGAACTTCTAGAAGA
ACTCTTAGAGGGCAAACAACGAGTAGAGGAGCAGCTCAGGCTGAGGGAACGGGAGCTGACAGCCCTGAAG



[View online >](#)

GGGGCCCTGAAAGAGGAGGTGGCCCTCCCACGACCAGGAGGTGGAACATGTCCGGCTGCAGTACCAGCGAG
ACACGGAGCAGCTTCGCCGGAGCATGCAAGATGCGACCCAGGACCATGCTGCACTGGAGGCTGAGAGGCA
GAAGATGTCTTCCCTCGTGCGGGAGCTGCAAAGAGAGCTAGAGGAGACCTCTGAGGAGACAGGGCATTGG
CAGAGCATGTTCCAGAAGAACAAGGAAGAGCTGAGAGCCACCAAGCAGGAACTGCTGCAACTGCGGATGG
AGAAGGAGGAGATGGAAGAGGAACTTGGGGAGAAGATGGAGGTCTTACAGAGGGACTTAGAGCAGGCCCC
AGCCAGTACAAGAGATACTCACCAGTGTGAGGAACTTAAAAAGGAGCTTCGACGCACCCAGGGGGAGCTT
AAAGAGCTTCAGGCAGAGCAGCAGAACCAGGAGGTGACTGGCGACACCAGAACCAGGTGTAGAGAAGC
AGCTGGCAGCGCTGAGGGAGGAGGCTGATCGAGGCCGAGAGCTGGAGCAGCAGAACCCTCCAGCTACAAAA
GACCCTGCAGCAACTGCGGCAGGACTGTGAAGAGGCTTCCAAGGCTAAGGTGGCATCAGAGACAGAGGCC
ATGGTGTGGGGCAGCGTCGGGCAACCCTGAAACCACACTTCGGGAGACACAAGAGGAAAAATGACGAAT
TCCGAAGCGCATCCTGGGTCTGGAGCAGCAGTTGAAGGAGGCCCGAGGTCTGGCGGAAGGTGGGAAGC
GGTGGAGGCACGGCTTCGGGACAAAGTGCATCGGCTGGAGGTAGAGAAACAGCAGCTGGAAGAGGCTTTG
AATGCTGCCCGGGAGGAGGGGAACTGGCAGCAGCCAAGCGGGCTCTGGAGGTCCGGCTAGATGAGG
CCCAGCGGGGGCTGGCACGCCTTGGGCAGGAACAGCAAGCACTGAACCGGGCCCTAGAGGAAGAGGGGAA
GCAGCGGGAGGCTCTCCGAGGAGCAAGGCAGAGTTGGAGGAGCAGAAGCGTTTGTGAACAGGACTGTA
GACCGACTCAACAAGAGCTGGAGCAGATTGGGGATGACTCCAAGCTAGCCCTGCAGCAGCTCCAGGCTC
AGATGGAAGATTACAAGGAAAAGGCCCGGAAGGAGTAGCTGATGCCAGCGTCAGGCCAAGGATTGGGC
CAGTGAGGCTGAAAAGAAATTCAGGGGGGCTGAGCCGGCTTCAGGATGAGCTGCAAAGGCTGCGGCAAGCC
CTGCAGACATCCCAGGCTGAGCGGGACACAGCCAGGCTGGACAAAGAGCTGCTGGCCAGCGACTGCAGG
GTCTAGAGCAAGAGGCTGAGAACAAGAAACGCTTCCAGGACGACAAGGCTCGACAGCTGAAGAGCCTAGA
GGAGAAAGTCTCGCGGCTGGAAGCGGAGTTAGATGAAGAAAAGAACACTGTGGAAGTGTAAACAGATCGG
GTGAACCGTGGCCGGGATCAGGTGGATCAACTGAGGACAGAGCTCATGCAGGAGAGATCTGCTCGACAGG
ACTTGGAGTGTGACAAAATCTCCTTGGAGAGACAGAACAAGGATTTGAAGACCCGGTTGGCCAGTTCAGA
GGGCTTCCAGAAAACCCAGCGCTAGCCTCTCCAGCTTGAGTCCCAGAATCAGCTGCTGCAAGAGCGGCTG
CAAGCTGAAGAGAGAGAGAAGACAGTTCTGCAGTCCACCAATCGCAAATAGAACGGAGGGTTAAGGAGC
TCTCCATCCAGATTGATGATGAACGGCAGCATGTCAACGACCAGAAGGACCAGCTAACCCCTGAGGGTGAA
GGCTTTGAAGCGGCAGGTGGATGAAGCAGAAGAGGAAATTGAGCGGCTGGACAGCCTGAGGAAGAAGGCA
CAGCGGGAACGGAGGAACAGCATGAGGTCAATGAACAGCTCCAAGCCCGGATCAAATCCTTGGAAAAGG
ATGCCTGGCGGAAAGCTTCCCGCTCAGCTGCTGAGTCAGCCCTCAAACAAGAGGGGCTGAGCTCTGATGA
GGAGTTTGACAACGTCTACGACCCCTCATCCATTGCATCACTGCTTACTGAGAGCAACCTGCAGACTAGC
TCATGT

ACGCGTACGCGGCCGCTCGAGCAGAACTCATCTCAGAAGAGGATCTGGCAGCAAATGATATCCTGGATT
ACAAGGATGACGACGATAAGGTTTAA

Protein Sequence: >MR215417 representing NM_001037711
 Red=Cloning site Green=Tags(s)

MMADPRGPVDHGVQIRFITEPEGATEMGLTRRSGRRPARDARASTYGVAVRVQGIAGQPPFVVLNSGEKGT
 DSFGVQIKGGNNRGPALSSDSELPENPYSQVKGRPATSRSSTSDDEPKDHLNGKLIRSQSASLTGLA
 FMSPSNRSTSLLELAPKPTSSINTIDTAPLSSVDSL INKFDSQKGGQVRGTRGRTRTLPHEQRKRSQSL
 DSRLPRDTREEREHQSANHWTRGTYDNHVDSSKNPSQKQSPFSSF SRSRQTQDWVLQSFEE TRDPAMVQ
 FKSTPDLRLDQRETAPPGSADHVKATIYGILREGSSESEASVRRKVS LVLEQMQLGMVSPASTKALAGQ
 AELTRKMEELQKKLDEEVKKRQKLEPSRVGLERQLEEKAE ECHRLQELLERRKGEVQSSKELQNMKLLL
 GQEEGLRHGLEAQVKELQLKHKSPD SGKESLLKDLLDTRELL EELLEGKQRVEEQRLRLREREL TALK
 GALKEEVASHDQVEVHVRLQYQRDTEQLRRMQDATQDHAALAEERQKMSSLVRELQRELEETSEETGHW
 QSMFQKNKEELRATKQELLQLRMEKEEMEEELGEKMEVLQRDLEQARASTRDTHQVEELKKELRRTQGEL
 KELQAEQQNQEV TGRHQNVLEKQLAALREEADRGRELEQQNLQLQKTLQQLRQDCEEASKAKVASETA
 MVLGQRRATVETTLRETQEENDEFRRRILGLEQQLKEARGLAEGGEAVEARL RDKVHRLEVEKQQLEEAL
 NAAREEEGNLAAAKRALEVRLDEAQRGLARL GQEQQALNRAL EEEGKQREALRRSKAELEEQRLLNRTV
 DRLNKELEQIGDDSKLALQQLQAQMEDYKEKARKEVADARQAKDWASEAEKNSGGLSRLQDELQRLRQA
 LQTSQAERDTARLDKELLAQRLQGLEQEAENKKRFQDDKARQLKSLEEKVSRLEAELDEEKNTVELLTD
 VNRGRDQVDQLRTELQERSARQDLECDKISLERQNKDLKTRLASSEGFQKPSASLSQLESQNQLQERL
 QAEEREKTVLQSTNRKLERRVKELSIQIDDERQHVNDQKDQLTLRVKALKRQVDEAE EIERLDSL RKA
 QRELEEQHEVNEQLQARIKSLEKDAWRKASRSAAESALKQEGLESSDEEFDNVYDPSSIASLLTESNLQTS
 SC

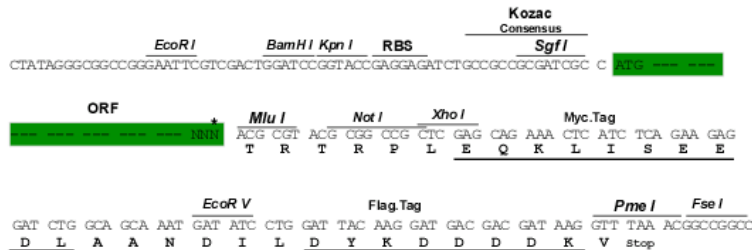
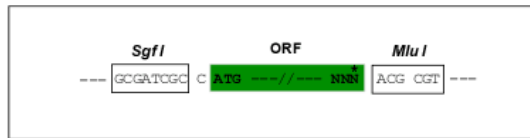
TRTRPLEQKLISEEDLAANDILDYKDDDDKV

Restriction Sites:

Sgfl-MluI

Cloning Scheme:

Cloning sites used for ORF Shuttling:

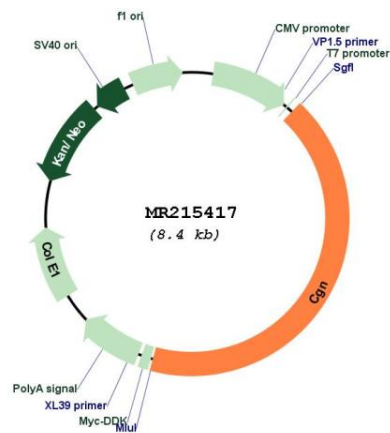


* The last codon before the Stop codon of the ORF

ACCN: NM_001037711

ORF Size: 3576 bp

OTI Disclaimer:	The molecular sequence of this clone aligns with the gene accession number as a point of reference only. However, individual transcript sequences of the same gene can differ through naturally occurring variations (e.g. polymorphisms), each with its own valid existence. This clone is substantially in agreement with the reference, but a complete review of all prevailing variants is recommended prior to use. More info
OTI Annotation:	This clone was engineered to express the complete ORF with an expression tag. Expression varies depending on the nature of the gene.
Components:	The ORF clone is ion-exchange column purified and shipped in a 2D barcoded Matrix tube containing 10ug of transfection-ready, dried plasmid DNA (reconstitute with 100 ul of water).
Reconstitution Method:	<ol style="list-style-type: none"> 1. Centrifuge at 5,000xg for 5min. 2. Carefully open the tube and add 100ul of sterile water to dissolve the DNA. 3. Close the tube and incubate for 10 minutes at room temperature. 4. Briefly vortex the tube and then do a quick spin (less than 5000xg) to concentrate the liquid at the bottom. 5. Store the suspended plasmid at -20°C. The DNA is stable for at least one year from date of shipping when stored at -20°C.
RefSeq:	<u>NM_001037711.2, NP_001032800.2</u>
RefSeq Size:	5039 bp
RefSeq ORF:	3579 bp
Locus ID:	70737
Cytogenetics:	3 40.74 cM
MW:	136.5 kDa

Product images:


Circular map for MR215417