

Product datasheet for MR215127

Wdr33 (NM_001170970) Mouse Tagged ORF Clone

Product data:

Product Type:	Expression Plasmids
Product Name:	Wdr33 (NM_001170970) Mouse Tagged ORF Clone
Tag:	Myc-DDK
Symbol:	Wdr33
Synonyms:	1110001N06Rik; 2310011G05Rik; 2810021O11Rik; 8430413N20Rik; WDC146
Mammalian Cell Selection:	Neomycin
Vector:	pCMV6-Entry (PS100001)
E. coli Selection:	Kanamycin (25 ug/mL)
ORF Nucleotide Sequence:	>MR215127 representing NM_001170970 Red=Cloning site Blue=ORF Green=Tags(s)

TTTTGTAATACGACTCACTATAGGGCGGCCGGAATTCGTCGACTGGATCCGGTACCGAGGAGATCTGCC
GCC**CGATCGCC**

ATGGCTACAGAAATTGGCTCTCCTCCACGATTTTTCCATATGCCGAGTTTCAACATCAGGCTCCCCGAC
AATTATTTTATAAGCGACCTGATTTTGCACAGCAGCAAGCAATGCAGCAGCTCACCTTTGATGGAAAACG
AATGAGAAAAGCTGTAACCGAAAACCATAGACTACAATCCCTCTGTAATTAAGTATTTGGAGAATAGG
ATATGGCAAAGAGATCAGAGAGATATGCGGGCAATTCAGCCGGATGCAGGTTATTATAATGATCTGGTCC
CACCAATAGGAATGTTGAATAATCCTATGAATGCAGTAACAACAAAATTTGTTAGGACATCAACAAACAA
AGTTAAATGCCAGTATTTGTTGTGAGGTGGACCCCGAAGGAAGACGATTGGTCACTGGAGCTTCTAGT
GGGGAGTTCACCTTGGAATGGGCTGACTTTCAACTTTGAAACCATATTGCAGGCTCATGATAGCCCTG
TGAGGGCCATGACTTGGTACATAATGACATGTGGATGTTGACAGCAGATCATGGAGGATATGTGAATA
TTGGCAATCCAACATGAACAACGTCAAGATGTTCCAGGCACATAAGGAGGCGATTAGAGAGGCCAGTTTC
TCACCCACGGATAATAAATTTGCTACATGCTCTGATGACGGCACTGTTAGAATCTGGGATTTTCTTCGTT
GCCATGAGGAAAGAATTCCTCCGAGACAGGGTTTCTCTTTGTAGCCCTGGCTGTCTGGAAATTGCTCAGT
AGACCAGGCTGGCCATGAACCTGTCTTTCCATCAGCTGGAT

ACGCGTACGCGGCCGCTCGAGCAGAAACTCATCTCAGAAGAGGATCTGGCAGCAAATGATATCCTGGATT
ACAAGGATGACGACGATAAGGTTTAA



[View online »](#)

Protein Sequence: >MR215127 representing NM_001170970
 Red=Cloning site Green=Tags(s)

MATEIGSPRRFFHMPRFQHQAPRQLFYKRPDFAQQQAMQQLTFDGKMRMRKAVNRKTIDYNPSVIKYLENR
 IWQRDQRDMRAIQPDAGYYNDLVPPIGMLNPNMNAVTTKFRVSTNKVKCPVVFVVRWTPGRRLLVTGASS
 GEFTLWNGLTFNFETILQAHDSPVRAMTWSHNDMWMMLTADHGGYVKYQSNMNNVKMFQAHKEAIREASF
 SPTDNKFATCSDDGTVRIWDFLRCHERILRDRVSLCSPGCPGNCSVDQAGHEPVFSISWD

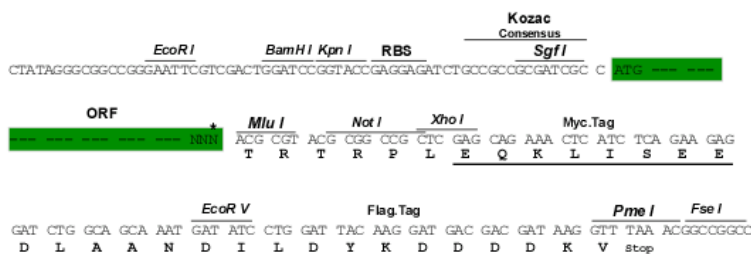
TRTRPLEQKLISEEDLAANDILDYKDDDDKV

Chromatograms: https://cdn.origene.com/chromatograms/mm9038_e04.zip

Restriction Sites: SgfI-MluI

Cloning Scheme:

Cloning sites used for ORF Shuttling:



* The last codon before the Stop codon of the ORF

ACCN: NM_001170970

ORF Size: 813 bp

OTI Disclaimer: The molecular sequence of this clone aligns with the gene accession number as a point of reference only. However, individual transcript sequences of the same gene can differ through naturally occurring variations (e.g. polymorphisms), each with its own valid existence. This clone is substantially in agreement with the reference, but a complete review of all prevailing variants is recommended prior to use. [More info](#)

OTI Annotation: This clone was engineered to express the complete ORF with an expression tag. Expression varies depending on the nature of the gene.

Components: The ORF clone is ion-exchange column purified and shipped in a 2D barcoded Matrix tube containing 10ug of transfection-ready, dried plasmid DNA (reconstitute with 100 ul of water).

Reconstitution Method:

1. Centrifuge at 5,000xg for 5min.
2. Carefully open the tube and add 100ul of sterile water to dissolve the DNA.
3. Close the tube and incubate for 10 minutes at room temperature.
4. Briefly vortex the tube and then do a quick spin (less than 5000xg) to concentrate the liquid at the bottom.
5. Store the suspended plasmid at -20°C. The DNA is stable for at least one year from date of shipping when stored at -20°C.

RefSeq: NM_001170970.1, NP_001164441.1

RefSeq Size: 1152 bp

RefSeq ORF: 816 bp

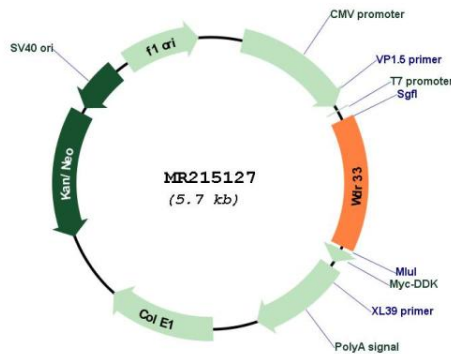
Locus ID: 74320

Cytogenetics: 18 B1

MW: 31.9 kDa

Gene Summary: Essential for both cleavage and polyadenylation of pre-mRNA 3' ends.[UniProtKB/Swiss-Prot Function]

Product images:



Circular map for MR215127