

GGAAGGGTATAGACAGCTCTGTACCTGACATAGAGAGCCTCAGTCAGAAAAGCAAGTTAGAGGAGCCTGG
GCTTCTGAACATGGACATGCCTCTCGAACCTTCTGAGAAAAGCCACGGATCTCTCTTTAAACCCACTTTG
TCTGCCACAGAACCCTGCAGTACGAAAGTTGAGAGAAGGCCCCAGAAAGTAAGAGTGAGAACACACCC
CAGGCATAGAATGCCTGGAAAGGGTGGAGAAAGCCAAGAAGACCTCCATTGATAAGGACATCCAAAAATT
GAGTCCAATACCAGAAGAAGTTGTAAGGGGTGCTCTAGAGTCAGAAAAGTCAGGTCTTGTGAAGTGGCT
GAAACTCCTCTCCACTCTCGATGGCTGGGGCCAAGGAGAAAACAGACCTCAGAAAAAAGGATGTAGACT
GTAGTAGAGTTGAGTAAAAGTCAGTCCCTTAAAAATGCAAGCCAGAAATTCTAAAAGAGGATCTGA
GTCTCGAGGGAGGAAGTGGCCAAACTGGACAATGCCAGACCTCTGGCATGGAGGATACTTCTGAAACA
AAGGGCTCTGTGCAGAAAAACAATTTAAATATAAGTTAGTTTCTGAAAGAAACAGTACTGCTTCAGAAA
ACACTGAGATCACCTCTGAAAGGAAGAAGGAAGGCATCAAGTTGACAATTAGGATATCAAGTCGGAAGAA
GAAGCCAGATTGCCCCCAAACTGTAGACTCAGAAAGCAAGGAAGAGAAGGCGGGCAAGGAAGAAGAG
AAAGCAAGTGTGGTTCGAACTTTAAGAAGTCTCCAAGAATATCTAGACCCACAGCAAAAGTCGCTGAGA
TCAGAGTCCAGAAAGCCGATAAGAGAAGAGCTGACGGAGAAGATGGAGTGAAGGGGAGCCGGCATCTTT
GCAAACAGCAGACAAGAAGGATCACTTGAAGAAAGCAGAGAAGGATACAAATTCTAAAGCAAGCAAGGTA
AAACCCAAAGGCAAAGTTCGATGGACTGGCTCTCGGACACGAGGCAGGTGAAATACTCCAGCAATGACG
AAAGTGAAGGATCCGAGAGTGACAAATCCTCTGCAGCCTTGGAAGAGGAGGAAGGAAGGAGGTGAAGA
AGCGGTCTTCCAGATGACGATGAACCTTGCAAAAAGTGTGGCCTTCCGAACCATCCAGAACTAATTCTT
CTGTGTGATTCTTGCACAGTGGATACCATACTGCCTGCCTCCGCCCTCCGCTGATGATTATCCCTGATG
GAGAATGGTTCTGCCCTCCTTGCCAACATAAACTACTGTGTGAAAAGTTAGAAGAACAGCTGCAAGATTT
GGACGTCGCCTTAAAGAAGAAAGAGCGTGCAGAGCGAAGGAAAGAACGTTTGGTGTATGTTGGTATCAGT
ATTGAAAACATCATTCTCCACAAGAGCCTGAGTTTTCTGAAGAGCAAGAAGAAAAGAAAAAGATGCAA
AAAAATCCAAAGCAAATGCACTTGAAGGAGATCAACAAGAACAAGGAAATGTATTAGCTACAGATTTGA
TGATTTGATGAAGCAATTGATGAAGCTATAGAAGATGATATTAAGAGGCTGATGGAGGAGGATTTGGC
CGGGGAAAGATATCTCCACCATCACAGGTCACCGTGGGAAAGACATTTCTACTATTTTGGATGAAGAAA
GAAAGGAAAAATAACGGCCCCAGAGGCGAGCTGCTGCTCGCAGGAAGAAACGCCGCGACTTAATGATCT
TGACAGTGATAGCAACCTAGATGAAGAAGAGAGTGAAGTGAATTCAGATCAGTGACGGATCTCAGGAT
GAGTTTGTGTCTGATGAAAAACCAGATGAAAGTGAAGAAGAGCCACCATCCAATGAGGACAGCGACA
CTGACTTCTGAGCCGAAGACTGAGGCGGCATCCTTCTCGCCAATGAGGCAAAGCAGGCGTTTGGCGGAG
AAAGACCCCAAAGAAGAAGTACTCCGATGACGATGAGGAGGAGGAAGAATCCGAGGAGAACAGCAGAGAC
TCTGAAAGTGACTTTAGCGATGATTTTAGTGATGATTTTGTAGAAACCCGGCGAAGGCGATCAAGAAGGA
ACCAGAAAAGACAAATTAATATAAAGAAGATTCAGAAAGTGAAGTTCAGAAAAGTCTACGACGTGG
TAAAGAAATCAGGCGAGTTCACAAGCGCAGACTTCCAGCTCAGAGAGTGAAGAGAGCTTTATGTCCAAG
AACTCTGAAGATGATGAGCTAACAAAAGAAATCGAAGCGATCTGTTTCGAAAACGGGGCCGAAGCACAGATG
ACTATTAGAAGCAGATGAGGATGATGAAGAGGAAGGCAAACCATCCCGCAAGCGGCTACACCGATTGA
GACGGACGAGGAGAGCTGTGACAATGCTCATGGGACGCAGACCAGCCTGCCCGTACAGCCAGCCAGT
GCCCTGCCCTCAGAGCAGGAGAGCAGCAAGAAGCCCTACCGGATAGAGAGTGAAGGAAGAAGACTTTG
AAAACAAAGTAGGGAGCCATTGGACTACAGCCTAGTAGACTTGCCTTCCACCAATGGACAGAGCCCTGG
CAAGGCCATTGAGAACTGATGGGCAAAGCAACTGAAAAGTCCCAACCCCAAGGACAAATGGCACAGCC
AGTGCAAGTCTAGCCCCAATGGGACAAGTGGTGGACAGGAGGTGGGGGACCAGAGGAAGATGAAGATG
AGCTTTTGGGAGTGACTGATCTTGTGATTACGTCTGTAAACAGTGAACAGTTA

ACGCGTACGCGGCCGCTCGAGCAGAACTCATCTCAGAAGAGGATCTGGCAGCAATGATATCCTGGATT
ACAAGGATGACGACGATAAGGTTTAA

Protein Sequence: >MR215002 representing NM_001081267
 Red=Cloning site Green=Tags(s)

```

MAAAAAAAAAAAMAPPGCPGSCPNFAVVCFLERYGPLLDPPELPELQAPPDIGNGEVPK
ELVELHLKLMRKIGKSVTADRWEKYLKICQEFNSTWAWEMEKKGYLEMSVECKLALLKYLCECQFDDNL
KFKNIINEEDADTMRLQPIGRDKDGLMYWYQLDQDHNVRMYIEEQDDQDGSSWKCIVRNRNELAETLALL
KAQIDPVLLKNSSQQEDSSRESPTLEDEETKKDEETPKQEASKENEKTGADERSVDSGKCSAASALEEPA
VKTEKADEKELAKLPVIVKLEKPLPETEEKKIIREESSDFKENVKPIKVEAKECRADPKDLKGSLELRLGS
QEPERADFGSNIKSQDIIEKSTEETEKLKNDQQAQIPLKKREIKLSDDFSPVKGPLCKSATPTKEVLKD
DIKQEEETCKRVSTISALSHEGKQLVNGEINDDKVIPNFKTEQMEIQLCDTKEDSASIPAKDGNACMEGN
GTECLNSVITSTKTSELEKEAPLGKIDSSVPDIESLSQKARLEEPGLLNMDMPLEPSEKATDLCLKPTL
SATEPCSTKVEEKAPRSKSENHTPGIECLERVEKAKKTSIDKDIQKLSPIPEEVVRGBALESEKSGPCEVA
ETPLPLSMAGAKEKQTSKDKDVCGRGSSSESQLENASPEILKEDSESSREEVAKLDNAQTSGMEDTSET
KGSVQKNKFKYKLVSRNSTASENTEITSERKKEGIKLTIRISSRKKKPCPPQTVDSESKEEKAGKEE
KASVGRTLRRSPRISRPTAKVAEIRVQKADKRRADGEDGVEGEPASLQTADKKDHLKKAEDTNSKASKV
KPKGKVRWTGSRTRGRWKYSSNDESEGSESDKSSAALEEEEGKEGEEAVLPDDDEPCKKCGLPNHPELIL
LCDSCDSGYHTACLRPPLMIIPDGWFPPCQHLLCEKLEEQLQDLVALKKKERAERRERLVYVIGIS
IENIIPPQPEPEFSEEQEEKKDAKSKANALERSTRTRKCSYRFDEFDEAIDEAIEDDIKEADGGGVG
RGKDISTITGHRGKDISTILDEERKENKRPQRAAAARRKKRRRLNDLSDSNLDEEESDEFKISDGSQD
EFVVDENPDSEEEPPSNEDSDTDFCSRRLRRHPSRPMRQSRRLRRKTPKKKYSDDDEEESEENSRD
SESDFSDDFSDDFVETRRRRSRRNQKRQINYKEDSESDGSQKSLRRGKEIRRVHKRRLSSSESESFMSK
NSEDDELTKESKRSVRKRGRSTDDYSEADEDEEEGKPSRKRLHRIETDEESCDNAHGADQPARDSQPS
ALPSEQESSKKPYRIESDEEEDFENKVGSPLDYSLVDLPSTNGQSPGKAIENLMGKATEKSQTPKDNQTA
SASLAPNGTSGGQEVGAPEEDEDLRLVTDLDVYVCNSEQL
  
```

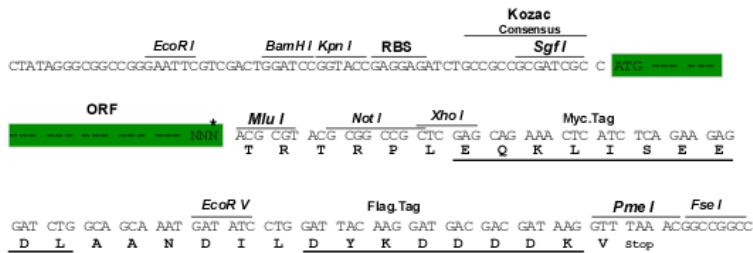
TRTRPLEQKLISEEDLAANDILDYKDDDDKV

Restriction Sites:

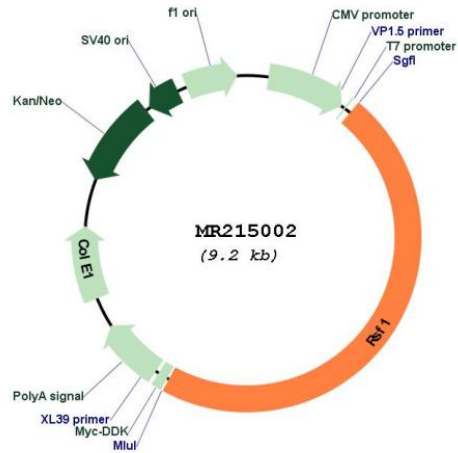
Sgfl-MluI

Cloning Scheme:

Cloning sites used for ORF Shuttling:



* The last codon before the Stop codon of the ORF

Plasmid Map:


ACCN: NM_001081267

ORF Size: 4323 bp

OTI Disclaimer: The molecular sequence of this clone aligns with the gene accession number as a point of reference only. However, individual transcript sequences of the same gene can differ through naturally occurring variations (e.g. polymorphisms), each with its own valid existence. This clone is substantially in agreement with the reference, but a complete review of all prevailing variants is recommended prior to use. [More info](#)

OTI Annotation: This clone was engineered to express the complete ORF with an expression tag. Expression varies depending on the nature of the gene.

Components: The ORF clone is ion-exchange column purified and shipped in a 2D barcoded Matrix tube containing 10ug of transfection-ready, dried plasmid DNA (reconstitute with 100 ul of water).

Reconstitution Method:

1. Centrifuge at 5,000xg for 5min.
2. Carefully open the tube and add 100ul of sterile water to dissolve the DNA.
3. Close the tube and incubate for 10 minutes at room temperature.
4. Briefly vortex the tube and then do a quick spin (less than 5000xg) to concentrate the liquid at the bottom.
5. Store the suspended plasmid at -20°C. The DNA is stable for at least one year from date of shipping when stored at -20°C.

RefSeq: [NM_001081267.2](#), [NP_001074736.1](#)

RefSeq Size: 11129 bp

RefSeq ORF: 4326 bp

Locus ID: 233532

Cytogenetics: 7 E1

MW: 162.2 kDa