

Product datasheet for MR214949

H2-Q6 (NM_207648) Mouse Tagged ORF Clone

Product data:

Product Type:	Expression Plasmids
Product Name:	H2-Q6 (NM_207648) Mouse Tagged ORF Clone
Tag:	Myc-DDK
Symbol:	H2-Q6
Synonyms:	0610037M15Rik; H-2Q6; Qa-6; Qa6
Mammalian Cell Selection:	Neomycin
Vector:	pCMV6-Entry (PS100001)
E. coli Selection:	Kanamycin (25 ug/mL)
ORF Nucleotide Sequence:	>MR214949 representing NM_207648 Red=Cloning site Blue=ORF Green=Tags(s)

TTTTGTAATACGACTCACTATAGGGCGGCCGGAATTCGTCGACTGGATCCGGTACCGAGGAGATCTGCC
GCC**CGATCGCC**

ATGGCTCTAACACGCTGCTCTTGCTGGTGGCGGCCCTGACCCTGATCGAGACCCGCGGGCCAC
ACTCGCTGCGGTATTTCCACACTGCTGTGTCTGGCCCGCCTCGTGGAGCCCGTTTATTATCGTCGG
CTACGTGGACAACAAGCAGTTCGTGCGCTTCGACAGCGACCGGAAAATCCGAGGATGGAGCCGCGGGC
CGGTGGATGGAGCAGGAGGGCCGGAGTATTGGGAGCGGAGACACAGAAAGCCAAGGGCCATGAGGAGA
GTTTCCGAGTGAGCCTGAGGACCGCACAGAGATACTACAACCAGAGCAAGGGCGGCTCTCACACTCCA
GTGGATGTATGGCTGTGACGTGGGGTCCGACGAGCGCCTCCTCCGCGGTTACCTGCAATTCGCTATGAA
GGCCGCGATTACATCGCCCTGAACGAAGACCTGAAAACCTGGACGGCGCGGACATGGCTGCACAGATCA
CCCTACACAAGTGGGAGCAGGCTGGTATTGAGAGAGAGACCGGGCCTACCTGGAGGGCGCTTGCCTGCA
GTGCTCCGAGATACCTGCAGCTCCGGAAGGAGACGCTGCTGTGCACAGATCCCCAAAGGCACATGTG
ACCCATCACCCAGGTCTTATGGTGTGTACCCTGAGGTGTGGCCCTGGGCTTCTACCTGTGACA
TCACCCTGACTTGGCAGTTGAATGGGAGGAGCTGACCCAGGACATGGAGCTTGTGGAGACCAGGCTGC
AGGGATGGAACCTTCCAGAAGTGGCATCTGTGGTGGTCCCTTGGGAAGGAGCAGAATTACACATGC
CATGTGAACCATGAGGGGCTGCCTGAGCCTCTCACCTGAGATGGGAGCCTCCTCCATCCACTGTCTCA
ACATGGCGAACGTAGCTATTCTGTTGTCTTGTAGCTTGGCCATCATTGGAGCTGTGGTGGATTTTG

ACGCGTACGCGGCCGCTCGAGCAGAAACTCATCTCAGAAGAGGATCTGGCAGCAATGATATCCTGGATT
ACAAGGATGACGACGATAAGGTTTAA



[View online »](#)

Protein Sequence: >MR214949 representing NM_207648
 Red=Cloning site Green=Tags(s)

MALTTLLLLVAAALTLIETRAGPHSLRYFHTAVSWPGLVEPRFIIIVGYVDNKQFVRFDSDAENPRMEPRA
 RWMEQEGPEYWERETQKAKGHEESFRVSLRTAQRYYNQSKGGSHTLQWMYGCDVGSDELLRGLQFAYE
 GRDYIALNEDLKTWTAADMAAQITLHKWEQAGIAERDRAYLEGACVQSLRRYLQLRKETLLCTDPPKAHV
 THHPRSYGAVTLRCWALGFYPADITLTWQLNGEELTQDMELVETRPAGDGTFFQKWASVVVPLGKEQNYTC
 HVNHEGLPEPLTLRWEPPPSTVSNMANVAILLVLVVAWPSLELWWIL

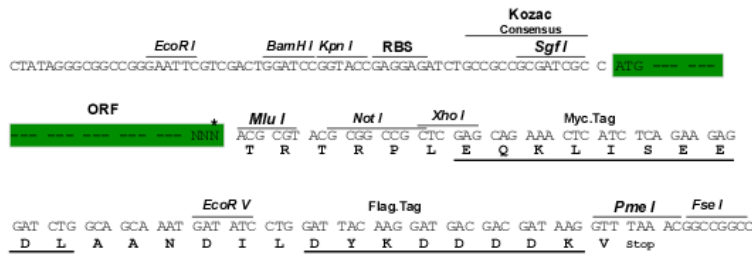
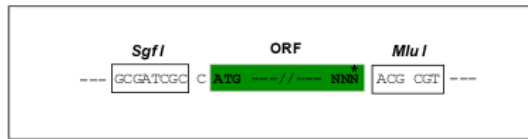
TRTRPLEQKLISEEDLAANDILDYKDDDDKV

Chromatograms: https://cdn.origene.com/chromatograms/mm9080_e10.zip

Restriction Sites: SgfI-MluI

Cloning Scheme:

Cloning sites used for ORF Shuttling:



* The last codon before the Stop codon of the ORF

ACCN: NM_207648

ORF Size: 978 bp

OTI Disclaimer: The molecular sequence of this clone aligns with the gene accession number as a point of reference only. However, individual transcript sequences of the same gene can differ through naturally occurring variations (e.g. polymorphisms), each with its own valid existence. This clone is substantially in agreement with the reference, but a complete review of all prevailing variants is recommended prior to use. [More info](#)

OTI Annotation: This clone was engineered to express the complete ORF with an expression tag. Expression varies depending on the nature of the gene.

Components: The ORF clone is ion-exchange column purified and shipped in a 2D barcoded Matrix tube containing 10ug of transfection-ready, dried plasmid DNA (reconstitute with 100 ul of water).

Reconstitution Method:

1. Centrifuge at 5,000xg for 5min.
2. Carefully open the tube and add 100ul of sterile water to dissolve the DNA.
3. Close the tube and incubate for 10 minutes at room temperature.
4. Briefly vortex the tube and then do a quick spin (less than 5000xg) to concentrate the liquid at the bottom.
5. Store the suspended plasmid at -20°C. The DNA is stable for at least one year from date of shipping when stored at -20°C.

RefSeq: [NM_207648.2](#)

RefSeq Size: 981 bp

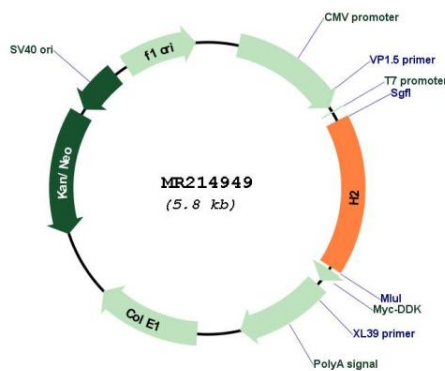
RefSeq ORF: 981 bp

Locus ID: 110557

Cytogenetics: 17 18.66 cM

MW: 37.4 kDa

Product images:



Circular map for MR214949