

Product datasheet for **MR214806**

Cdkl3 (NM_153785) Mouse Tagged ORF Clone

Product data:

Product Type:	Expression Plasmids
Product Name:	Cdkl3 (NM_153785) Mouse Tagged ORF Clone
Tag:	Myc-DDK
Symbol:	Cdkl3
Synonyms:	A1852479; B230379H01 Rik
Vector:	pCMV6-Entry (PS100001)
E. coli Selection:	Kanamycin (25 ug/mL)
Cell Selection:	Neomycin



[View online »](#)

ORF Nucleotide Sequence:

>MR214806 representing NM_153785
 Red=Cloning site Blue=ORF Green=Tags(s)

TTTTGTAATACGACTCACTATAGGGCGGCCGGGAATTCGTCGACTGGATCCGGTACCGAGGAGATCTGCC
 GCC**CGCATCGCC**

ATGGAGATGTATGAAACCCTTGAAAAGTGGGAGAGGGAAGTTATGGAACGGTCATGAAATGCAAACATA
 AGGACACTGGGCGAATAGTGGCCATTAAGATTTTCTATGAGAAAACAGAAAAATCTGTCAACAAAATTGC
 AACGAGAGAAAATAAGTTTCTAAAGCAATTTTCGCATGAAAACCTGGTCAATTTGATTGAAGTTTTAGA
 CAAAAGAAGAAAATTCATTTGGTATTTGAGTTTATTGACCACACGGTCTTAGATGAGCTGCAGCACTACT
 GTCACGGACTAGAGAGTAAGCGGCTGAGAAAGTACCTCTTCCAGATCCTTCGCGCCATTGAGTACCTGCA
 TAATAATAATATTATCCATCGAGATATAAAGCCTGAGAATATTTTAGTCTCCAGTCAGGAATTACGAAG
 CTGTGTGATTTTGGGTTTGGCAGGACACTAGCAGCTCCTGGAGACGTTTACACAGACTACGTGGCCACAC
 GCTGGTACAGAGCTCCAGAGCTGGTGTGAAAGACACCTCCTACGAAAGCCAGTGGACATCTGGGCTTT
 GGGCTGTATGATCATTGAAATGGCCACTGGCCATCCCTTCTTCTAGCAGTTCCGATTTGGATTTGCTC
 CACAAGATTGTTTTAAAAGTAGGCAACCTGACCCCGCACCTGCACAATATCTTTTCCAAGAGTCCCATCT
 TTGCTGGGGTGGTTCTTCTCAAGTTCAACACCCAAAAACCGCAAGAAAGAAATACCCCAAGCTCAATGG
 ATTGCTGGCAGATATAGTTCATGCTTGTTTACAAATTGATCCTGCTGAGAGGACATCATCTACTGATCTT
 TTGCGTACGATTACTTTACTAGAGATGGATTTATTGAGAAATTCATACCAGAGCTGAGAGCTAAATTAT
 TACAGGAAGCAAAGGTTAATTCATTTATAAAGCCAAAAGAGAATTTTAAAGAAAATGAACCTGTGAGAGA
 TGAGAAGAAAATCAGTTTTACCAACACCCTGCTCTATGGAATCCATCACTTTATGGCAAGGAAGTGGAC
 AGAGACAAAAGGCCAAGGAGCTCAAAGTCAGAGTCATTAAGGCCAAAGGGGCAAGGAGATGTCCCAG
 ACCAGAAGAAGCCAGAGTATGAAGGCGACCACCCAGCAGGGCACAGCTGATGACACACAGCCCTCATC
 ACTGGACAAGAAGCCTTCTGTCTTGAAGTGAACAACCCCTCAATCCAGTGAGAATTCGTACCGTGTGTC
 AAAGAAGACCCACAGCTGGGGTTGTATGATAATGCCACCTATCAACCTGACAAGCAGTAATTTGTTGG
 CCGCAAATCTCAGTTCAAACCTTTCCACCCCAATTCACGGTTAACTGAAAGAACAAAAAGAGACGCAC
 TTCTTTCACAACTATTGGACAGACTTTGTCTAATAGCAGACAAGAGGACACAGGTCCCACACAAGTCCAA
 ACAGAGAAAGGTGCATTTAATGAGCGAACAGGTGAGAATGACCAATATCGAGTGGGAACAAAAGAAAGC
 TGAATTTTCCAAATGCGACAGGAAAGAATTCATTTCCCTGAAGTCCATTACAGTGCAGGCGAAGGA
 GATGAAAGGGATGGAAGTTAAACAGATAAAAAGTGTGAAGAGAGAATCAAAGAAAACAGATTCATCTAAA
 ATACCAACTTTACTTAGTATGGACCCAAATCAAGAAAAACAAGAGGGTGGAGATGGCGATTGTGAGGGGA
 AGAATTTGAAGAGGAACAGATTTTTTTTTTCCCGA

ACGCGTACGCGGCCGCTCGAGCAGAAACTCATCTCAGAAGAGGATCTGGCAGCAAATGATATCCTGGATT
 ACAAGGATGACGACGATAAGGTTTAA

Protein Sequence:

>MR214806 representing NM_153785
 Red=Cloning site Green=Tags(s)

MEMYETLKGVEGSYGTVMKCKHKDTGRIVAIFKIFYEKPEKSVNKIATREIKFLKQFRHENLVNLIEVFR
 QKKKIHLVFEFIDHTVLDELQHYCHGLESKRLRKYLFQILRAIEYLHNNNIHRDIKPENILVSSQGITK
 LCDFGFARTLAAPGDVYTDYVATRWYRAPELVLKDTSYGKPVDIWALGCMIIEMATGHPFLPSSSDLDLL
 HKIVLKVGNLTPHLHNIFSKSPIFAGVLPQVQHPKTARKKYPKLNGLLADIVHAQLQIDPAERTSSTD
 LRHDYFTRDGFIEKFIPELRAKLLQEAKVNSFIKPKENFKENEPVVRDEKKSFTNTLLYGNPSLYGKEVD
 RDKRAKELKVRVIKAKGGKGDVPDQKKPEYEGDHRQQTADDTQPSSLDKKPSVLEL TNPLNPSNSDGV
 KEDPHAGGCMIMPPINL TSSNLLAANLSSNL SHPNSRL TERTKKRRTSSQTI GQTL SNSRQEDTGPTQVQ
 TEKGAFNERTGQNDQISSGNKRKLNFPKCDRKEFHFPPELPTVQAKEMKGMVQKIKVLKRESKKTSSK
 IPTLLSMDPNQEKQEGGDGCEGKNLKRNRFFSR

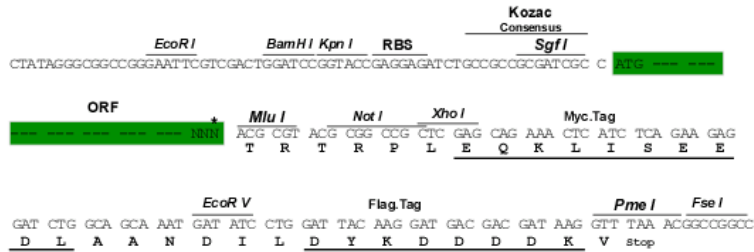
TRTRPLEQKLISEEDLAANDILDYKDDDDKV

Restriction Sites:

SgfI-MluI

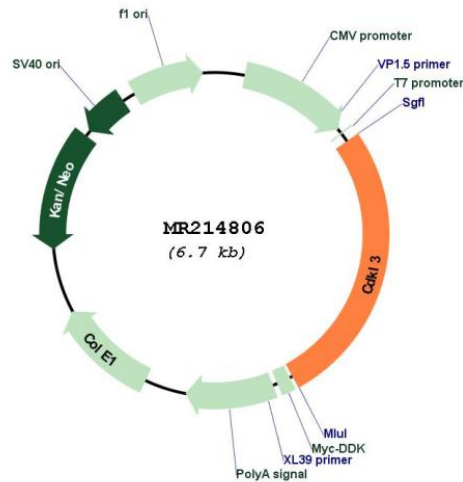
Cloning Scheme:

Cloning sites used for ORF Shutting:



* The last codon before the Stop codon of the ORF

Plasmid Map:



ACCN: NM_153785

ORF Size: 1785 bp

OTI Disclaimer:	The molecular sequence of this clone aligns with the gene accession number as a point of reference only. However, individual transcript sequences of the same gene can differ through naturally occurring variations (e.g. polymorphisms), each with its own valid existence. This clone is substantially in agreement with the reference, but a complete review of all prevailing variants is recommended prior to use. More info
OTI Annotation:	This clone was engineered to express the complete ORF with an expression tag. Expression varies depending on the nature of the gene.
Components:	The ORF clone is ion-exchange column purified and shipped in a 2D barcoded Matrix tube containing 10ug of transfection-ready, dried plasmid DNA (reconstitute with 100 ul of water).
Reconstitution Method:	<ol style="list-style-type: none">1. Centrifuge at 5,000xg for 5min.2. Carefully open the tube and add 100ul of sterile water to dissolve the DNA.3. Close the tube and incubate for 10 minutes at room temperature.4. Briefly vortex the tube and then do a quick spin (less than 5000xg) to concentrate the liquid at the bottom.5. Store the suspended plasmid at -20°C. The DNA is stable for at least one year from date of shipping when stored at -20°C.
RefSeq:	NM_153785.4 , NP_722480.3
RefSeq Size:	2765 bp
RefSeq ORF:	1788 bp
Locus ID:	213084
UniProt ID:	Q8BLF2
Cytogenetics:	11 B1.3
MW:	68.2 kDa