

## Product datasheet for **MR214719**

### Ap5b1 (NM\_001033448) Mouse Tagged ORF Clone

#### Product data:

Product Type:	Expression Plasmids
Product Name:	Ap5b1 (NM_001033448) Mouse Tagged ORF Clone
Tag:	Myc-DDK
Symbol:	Ap5b1
Synonyms:	Gm962
Mammalian Cell Selection:	Neomycin
Vector:	pCMV6-Entry (PS100001)
E. coli Selection:	Kanamycin (25 ug/mL)



[View online »](#)

**ORF Nucleotide Sequence:**

>MR214719 representing NM\_001033448  
 Red=Cloning site Blue=ORF Green=Tags(s)

TTTTGTAATACGACTCACTATAGGGCGGCCGGGAATTCGTCGACTGGATCCGGTACCGAGGAGATCTGCC  
 GCC**GCGATCGCC**

ATGGGGCCCTAGGTCGAGAAGCCTGGGCCAGCGCCTGGGGCTTCCGAGCCAGCCCATCCGCCTTTC  
 TGGCAGGTGCCGAAGGTGAGGATTTGGGTCGCGACCTGTTGAGTGACCTAAGGAGTGAAAAGCTAAGCGA  
 GCAGACCAAGGTTTCCTTACTGACACTGAGCTTGGAGTACTCTGATAAACTTTGGCCTGATGCACCTGCC  
 GCGGAGGCTGCTGCCACTTCCCTGTTGGACACGCTTGTCTCCTGCCACAAGACCTTCAGCTCTCCGGA  
 GGCTCCTGTTGTTGGCAGCCACTACAGCCCTGGTGTGAGGAGATGCTCTCGGACCCACTTCGGGAGCTTC  
 CTGCCGGCTTCTGCCCTTACTTCTGGCTTAGCTTCAGGCCGAGACTTGGGACGAAGCTTGAACCCCT  
 TCAGAACAGCGCCATCTACAGGCCACAGCCTGTGAATGCCTTGGAGAACTTGAGCGCTGTAAGCCTGGG  
 TGCTGGCCGGCGCCCTGGGGATGCTGCGGAGCCTCCCAGGGCAAACAGGTCCCATCCAGCCTGTCAGCCT  
 GCTTCTGGCCCTTGTCTACACGACACCTTGGTGGTACAGTCCAGGTCTGGGGCTGGCCTGCAAGGCCTG  
 CTGGTGGCTGAGGACTTCTCCACTGGGAGTTGTCCTGGGACTGGACCCTGGCTGAGGAATGGGATGCC  
 ATCTTAAGCCCCAGGGGCCAGCTGGCCACAGCTGGGGAGGAGGAGCGTGGCTTCCGGTTCTAGAGCC  
 CAGCCCCGAGGACGCCGAGAGCTGAAGGCTGCCGTGGCCAGCTTCTGGACACTTCTATCTGCTCACT  
 CCTGTGGCTCAGGCTCAACTTCTGTGGCTGTTGGGCTGGGCCCTCCGGGGTCTTCGGGGACAGCCACCAG  
 TGCTTTTCAAGCCACAGCTGGTTCGGCTGCTGGGACGGCACAGCTGACACTGTTACACTCAGTTCTGTC  
 TCTGAAGCGGCCCTTGGCGAGGCCCTGTTCACTGCACAGGATGAAGCTCTGCTCCTCCGAGGCTCACC  
 TTGGGAGCCCAGCACCCAGCTTTACCCTCGCCACACACCTCTTTTACCTGCATTGCATCTGAGCTTCC  
 CCGAGATTGCCACTAGGTCCAGAGGGGGAAGAGGCTGCCCGCTGCTGTTGGGGCCCCAGCTGCGCCG  
 GGGCCTCATGCCAGTCTCCTTCATGACCCAACGGTTCTCCTGGCCCGCCTGCATTTGCTGTCTGCTC  
 TGTGCTGACGATGAGGAAGAGGAGAAAGACCAGACTCAGGGCCACAGTGGTTCTACAGGAGGTGCTGG  
 CTGGGCTACAGCAAAGGGCAGCCCTGGATGGTGGTCCCCGGGCTTGGCCACTCTCTGTTTCCAAGCCTC  
 ATACCTTGTACTAACTGCCTGACTAGACACTCCACAGTACAGACATTTTGTATCCGCGGACTGGCCAA  
 CTGTACCAGCTCGGCCCTCCCTGGCACCCACTTTGTGGACCTCTAGATCAGGTAAGCCCTGAGCTGA  
 GAGAGCCCTCAGGGAGGTGCTGCTCAAGAGGCGGTGGCCAGGCCAGGCGAGAGCGAAGCCCTTGTCTG  
 GCACCTGCAGATGCTGGCAAAGGTGGCAGAGGGGGCCACTCAGAGTACCACACTCAGCTTCTACAGGCT  
 GCAGCTGTGCACTGCACCGACTGGGGCCTCCACCAGGCCCTACTGCGGGTGTGCCGTGCTGCTGCGGA  
 CAGGCGGGGAGATGGTCTGGCCAACTTCTGTCAGGAAGTGGCCAGACAGCTAGAGAATGCTGACGGACG  
 GGACCATGCCCGACTATACTATGTCCTTGTGCCATCTGTCAAGTTCCAAGTTGGGGATGGCGCTGGGC  
 CCCTCACTGGCTGCACCTGCCTGCTGCTACTAATGGCGGAGAACCAGGGCTTCTCATCAGCACTGA  
 TGGTGCAGGAGACCTCAGCCCCAATTCAGTTGAGTGTGGGGCCTCAGCAGGCCAAAGGCCCGCTCCCGGT  
 GCTGTGCTGCAGGTGCAGGCACTGGATGCTCCCGTCTACTCGTGGAGCTGCGCTTCCGTGTGGAAGGA  
 CAGCTCTATGAGCCGTTGGAGGCTGTCCACATACCCTGCTTGCCTCCGGGACAACCTGCGCATCCTCTGT  
 ACCTGCTTCTGCAGCCCCGATGCCAGCCCCGCCCCGCTACACGTCCGGGCCCTTACAGCACATCCGC  
 TGGCCTCAGTGCCATGCCCGCCTGCCACCCCTGTCTGTGAACCTTGTGACCTTTTCTGCCTTTCCGC  
 CGGCTCCCTAAGGGCTCTGAGTTGCGTTTCTTCGATGAGCTCTGGAACCTCTGCCTACCAAAGGGGCTAG  
 AGAGCCGTGTGTGGTGTCCACTTGGGCAGCAGGGCCTGGAGGCCTTGGTGTCCCAGTACCTAGAGCCCTT  
 TGTAGTGTGGCTCAGCCCCCTACCACCTACCTCATAGCCATCCGCTGCCTCCTGCCTCCATGCTGCTG  
 CTGCGCCTGGAGAAAGCTCAGGTGGATGGTGTGCTGTAGCCCTAAGGACTGATGACTGGGCTGTGCTGC  
 CCCTGGTAGGGGACTACCTCCGCGGCTTGCAGCCAC

**ACGCGT**ACGCGGGCCGCTCGAGCAGAAACTCATCTCAGAAGAGGATCTGGCAGCAAATGATATCCTGGATT  
 ACAAGGATGACGACGATAAGGTTTAA

Protein Sequence: >MR214719 representing NM\_001033448  
 Red=Cloning site Green=Tags(s)

MGPLGREAWAQRLLGAFRASPSAFLAGAEGEDLGRDLLSDLRSEKLSEQTKVSLLLTSLSEYSDKLWPDAPA  
 AEEAATSLLDTLVLLPTRPSALRRLLLAATTALVSGDALGPTSGASCRLPLLLGLASGRDLGRSFGTP  
 SEQRHLQATACECLGELERCKPGLLAGALGMLRSLPGQTGPIQPVSLLLALVLHDTLVVQSRSGAGLQGL  
 LVAEDFSTGSCPWDWTLAEEDAHLPQGPSWPTAGEEERGFVLEPSPEDARELKAAVAQLLDTSYLLT  
 PVAQAQLLWLLGWALRGLRGQPPVLFKPQLVRLLGTAQLTLLHSVLSLKAAFGEALFTAQDEALLRRLT  
 LGAQHPALPSPTHLYLHCILSFPENCPLGPEGEEAAPLLLPQLCRGLMPSLLHDPVTLARLHLLCCL  
 CADDEEEKQDQTQGPQWFLQEVLAGLQQRALDGGPRALATLFCQASYLVNCLTRHSTVQTFIRGLAQ  
 LYRARPSLAPHFVDLLDQVSPELREPLREVLLQEAVARPGESEALCWHLQMLAKVAEGATQSTTSLFQA  
 AAVHCTDWGLHQALLRVCRAALLRTGGDGLANLLQELARQLENADGRDHARLYVLLSHLSSSKLGMALG  
 PSLAAPALASSLMAENQGFSSALMVQETSAPIQLSVGPQQAQKGPLPVLCVQVQALDAPVYSLELRFVVEG  
 QLYEPLAVHIPCLRPGQPAHPLYLLLPQPCAPARLHVRLYSTSAGLTCHARLPPLSVNFADLFLPFP  
 RLPKGSSELRFDELWNSCLPKGVESRVWCPLGQQGLEALVSQYLEPFVLAQPPTTYLIAIRLPPASMLL  
 LRLEKAQVDGVPVALRTDDWAVLPLVGDYLRGLAAH

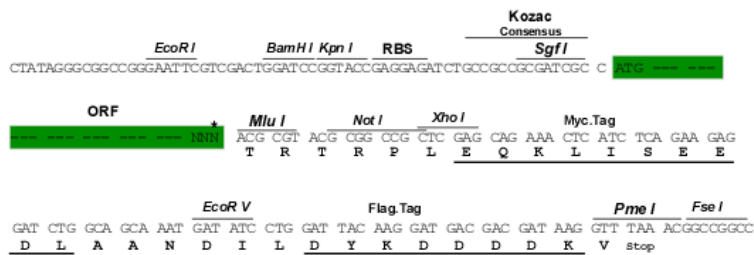
TRTRPLEQKLISEEDLAANDILDYKDDDDKV

Chromatograms: [https://cdn.origene.com/chromatograms/mm9037\\_a11.zip](https://cdn.origene.com/chromatograms/mm9037_a11.zip)

Restriction Sites: SgfI-MluI

Cloning Scheme:

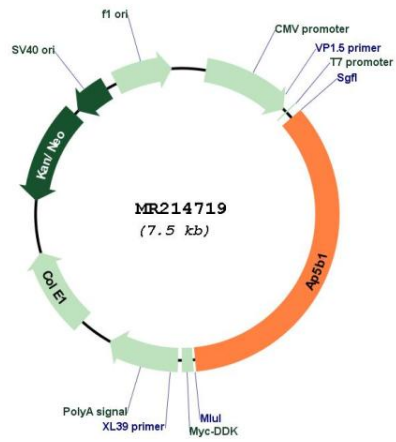
Cloning sites used for ORF Shuttling:



\* The last codon before the Stop codon of the ORF

<b>ACCN:</b>	NM_001033448
<b>ORF Size:</b>	2628 bp
<b>OTI Disclaimer:</b>	The molecular sequence of this clone aligns with the gene accession number as a point of reference only. However, individual transcript sequences of the same gene can differ through naturally occurring variations (e.g. polymorphisms), each with its own valid existence. This clone is substantially in agreement with the reference, but a complete review of all prevailing variants is recommended prior to use. <a href="#">More info</a>
<b>OTI Annotation:</b>	This clone was engineered to express the complete ORF with an expression tag. Expression varies depending on the nature of the gene.
<b>Components:</b>	The ORF clone is ion-exchange column purified and shipped in a 2D barcoded Matrix tube containing 10ug of transfection-ready, dried plasmid DNA (reconstitute with 100 ul of water).
<b>Reconstitution Method:</b>	<ol style="list-style-type: none"><li>1. Centrifuge at 5,000xg for 5min.</li><li>2. Carefully open the tube and add 100ul of sterile water to dissolve the DNA.</li><li>3. Close the tube and incubate for 10 minutes at room temperature.</li><li>4. Briefly vortex the tube and then do a quick spin (less than 5000xg) to concentrate the liquid at the bottom.</li><li>5. Store the suspended plasmid at -20°C. The DNA is stable for at least one year from date of shipping when stored at -20°C.</li></ol>
<b>RefSeq:</b>	<a href="#">NM_001033448.2</a> , <a href="#">NP_001028620.1</a>
<b>RefSeq Size:</b>	3092 bp
<b>RefSeq ORF:</b>	2631 bp
<b>Locus ID:</b>	381201
<b>UniProt ID:</b>	<a href="#">Q3TAP4</a>
<b>Cytogenetics:</b>	19 A
<b>MW:</b>	95.1 kDa
<b>Gene Summary:</b>	As part of AP-5, a probable fifth adaptor protein complex it may be involved in endosomal transport.[UniProtKB/Swiss-Prot Function]

Product images:



Circular map for MR214719