

Product datasheet for MR214709

Apol6 (NM_028010) Mouse Tagged ORF Clone

Product data:

Product Type:	Expression Plasmids
Product Name:	Apol6 (NM_028010) Mouse Tagged ORF Clone
Tag:	Myc-DDK
Symbol:	Apol6
Synonyms:	2310076O14Rik
Mammalian Cell Selection:	Neomycin
Vector:	pCMV6-Entry (PS100001)
E. coli Selection:	Kanamycin (25 ug/mL)
ORF Nucleotide Sequence:	>MR214709 representing NM_028010 Red=Cloning site Blue=ORF Green=Tags(s)

TTTTGTAATACGACTCACTATAGGGCGGCCGGAATTCGTCGACTGGATCCGGTACCGAGGAGATCTGCC
GCC**CGATCGCC**

ATGGCTTTGGTGCAAACCTCAACCCCGAGCCATCAGACAGAGGAGGACTATGAGGCTGATGCTGAGTTGC
TAAGGGACAAGGATGACAGTCTCTGGATGTTGAAGATGATGTTCTGTTCTAAAACAGTCCCGAGCTG
GAGAAAGAAGGAGAAGAAGCGCATTAGAACGCTCTATGCTATCGCAGACCACATTGACGAAAGCCACCAA
AAAGCTACCAAGATCAAAGTGGTACTACCTCTGCATCAGTCGCCTCTGGAGTCTGAGTCTCCTGGTT
TGCCCTGGCTACAACAAGTGCAGGGGAAGCCTGGTCTCACTGCTGTTGGGCATGGTTTGGGGGCAGT
TGCCGGGGTACCGAGATCGTGACCAATGTGAGGAAAACTCTCGCAATAAAAGAGCCCTTGCTCAGGTC
AACAGCATCATGCCTAACAGCGACCAGGAGCTGGAGGGGGTCAAGGGAGAGAAGACGACCTTTGTCACAG
CTGCCGGTGACCTTGCTACAAATGTGGGAACGCCTGGGATAATATCAAAAAGCACCTCCGAGCCCTCCA
GCTAACGAGAACCAACCCACGTCACCTCAGCTGCCAAAAGCTCATGACTGCGGGCCACGTATCAGCT
CGAAGTGGCAGGCAGGTACAAAAGGCCTTTGGGGCACAGCCCTGGCAATGACCAAAAATGCTCTGAGGA
TGGGACGTGCAGCTGCTGCCCTCCTCTGGCCAGGACATATACTCTCTGGGAGGACTGGAAGGATCT
GAAGGCGGCAAACCAACAGAGCTTGCAGAAGAGTTAAGAGCACGGGCTGCAGAACGGGAGCGGGTGTTA
GCTGAACACACCTGTCGCTACAGAAAGCTGCAGAGACTCAGCAAAGAGGCCGCAAGTCTCTTTGAAAG
GAAACAAGGTGACTCAGCCTCCATCCTCCTCGACTGAGAGAGCAAGACTCTGG

ACGCGTACGCGGCCGCTCGAGCAGAAACTCATCTCAGAAGAGGATCTGGCAGCAATGATATCCTGGATT
ACAAGGATGACGACGATAAGGTTTAA



[View online »](#)

Protein Sequence: >MR214709 representing NM_028010
 Red=Cloning site Green=Tags(s)

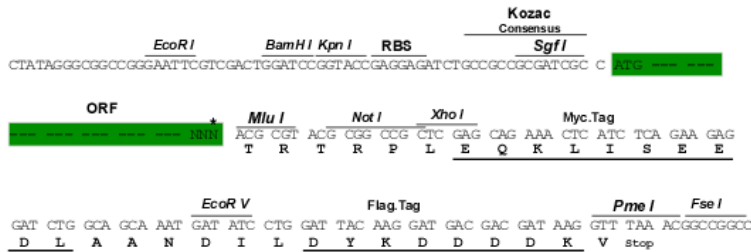
```

MALVQTPTPSHQTEEDYEADAELLRDKDSDPLDVEDDVLFLKQFPSPWRKKEKKRIRTLYAIADHIDESHQ
KATKIKVVTTSASVASGVL SLLGLALATTTAGGSLVLTAVGHGLGAVAGVTEIVTNVNRKNSRNKRALAQV
NSIMPNSDQELEGVKGEKTTFFVT AAGDLVYKCGNAWDNIKHLRALQL TRTQPHVTSAAKKLMTAGHVSA
RSGRQVQKAFGGTALAMTKNALRMGAAAAALSLGQDIYTLWEDWKDLKAANPTELAEELRARAERERVL
AEHTCRYRKLQRLSKEAARSSLKGNKVTQPPSSSTERARLW
  
```

TRTRPLEQKLISEEDLAANDILDYKDDDDKV

Restriction Sites: SgfI-MluI

Cloning Scheme:



* The last codon before the Stop codon of the ORF

ACCN: NM_028010

ORF Size: 963 bp

OTI Disclaimer: The molecular sequence of this clone aligns with the gene accession number as a point of reference only. However, individual transcript sequences of the same gene can differ through naturally occurring variations (e.g. polymorphisms), each with its own valid existence. This clone is substantially in agreement with the reference, but a complete review of all prevailing variants is recommended prior to use. [More info](#)

OTI Annotation: This clone was engineered to express the complete ORF with an expression tag. Expression varies depending on the nature of the gene.

Components: The ORF clone is ion-exchange column purified and shipped in a 2D barcoded Matrix tube containing 10ug of transfection-ready, dried plasmid DNA (reconstitute with 100 ul of water).

Reconstitution Method:

1. Centrifuge at 5,000xg for 5min.
2. Carefully open the tube and add 100ul of sterile water to dissolve the DNA.
3. Close the tube and incubate for 10 minutes at room temperature.
4. Briefly vortex the tube and then do a quick spin (less than 5000xg) to concentrate the liquid at the bottom.
5. Store the suspended plasmid at -20°C. The DNA is stable for at least one year from date of shipping when stored at -20°C.

RefSeq: [NM_028010.1](#), [NP_082286.1](#)

RefSeq Size: 2325 bp

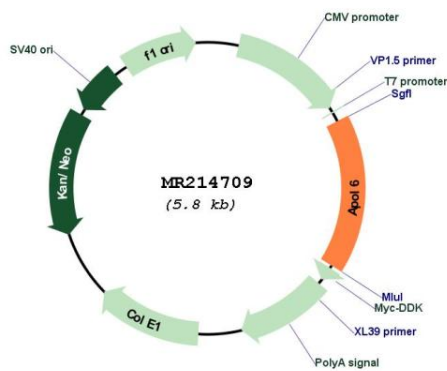
RefSeq ORF: 966 bp

Locus ID: 71939

Cytogenetics: 15 D3

MW: 35.6 kDa

Product images:



Circular map for MR214709