

## Product datasheet for **MR214539**

### Map3k13 (NM\_172821) Mouse Tagged ORF Clone

#### Product data:

Product Type:	Expression Plasmids
Product Name:	Map3k13 (NM_172821) Mouse Tagged ORF Clone
Tag:	Myc-DDK
Symbol:	Map3k13
Synonyms:	C130026N12Rik; LZK
Mammalian Cell Selection:	Neomycin
Vector:	pCMV6-Entry (PS100001)
E. coli Selection:	Kanamycin (25 ug/mL)



[View online »](#)

**ORF Nucleotide Sequence:**

>MR214539 representing NM\_172821  
 Red=Cloning site Blue=ORF Green=Tags(s)

TTTTGTAATACGACTCACTATAGGGCGGCCGGAATTCGTCGACTGGATCCGGTACCGAGGAGATCTGCC  
 GCC**CGCATCGCC**

ATGCCAACCCCTCAGGAGCACCTGAGCTGCTCCTCTTTGCCACACTTGCCCTTGACTGAGAACAACCT  
 CTGGTGGACGAAATGAGCTTGCAGCTATGGGGAACACCCTTACCCCAAGCTCCCTGAGGACCCTCAGGA  
 GAGGGGGCTATACAGTCAGAGCTGATGGAGATCACAGGCAGCCCGATCTCCACAACAGTGTGACCAGT  
 GTAAGCGAGGATTCTAGGGGCCAGTTTGAAGACAGTGTCTTTCAGCTAAGGGAACAGGATGAGTCAGAGA  
 TGACCCTGTCTCTGGGGAACAGCAACACTGTGGATGGAGAGAACACGAACGGACCAGAAGACATCAAGAT  
 TCAGTTTCAGCAGGTGAGCAGCGGCAGCGGGGTTTCTCGAAGGACTGTTTGGATGTCTCAGGCCCGTG  
 TGGAAATCATTGGGAAGGCATATTCCACTGATTACAAGCTGCAGCAGCAAGATACTTGGGAAGTGCAT  
 TTGAGGAAATCTCAGAGCTGCAATGGCTGGGTAGTGGAGCCCAAGGAGCTGTCTTCTGGGCAAATCCG  
 AGCAGAGGAGGTGCCATCAAGAAGGTGAGAGAACAATAAGAGACGACATCAAGCATCTGAGGAAGCTG  
 AAGCACCCTAACATCATCGCCTTCAAGGGTGTTCGACTCAGGCCCGTGTCTACTGCATCATCATGGAGT  
 ACTGTGCCACGGACAGCTGTACGAGGTCTGAGAGCTGGCCGGAAGATCACGCCCGGGTCTTGTGGA  
 CTGGTCCACGGGAATCGCCAGTGGAAATGAATTATCTCCATCTCCACAAGATTATACACCGTGACCTCAAG  
 TCGCCCAATGTTTGTGACTCACACAGATGCAGTGAAAATTTTCAGACTTTGGCAGATCTAAGGAACTCA  
 GTGATAAAGCACCAAGATGTCTTTCGCTGGCACCCTCGCGTGGATGGCACCAGAGGTGATCCGGAATGA  
 GCCTGTCTCGGAGAAGGTGGACATATGGTCATTTGGTGTGGTACTTTGGGAGCTGCTGACAGGGGAGATT  
 CCCTACAAGGATGTGACTCTTCCGCCATCATTGGGGTGTGGCAGCAACAGCTTGCATCTCCCAGTTC  
 CTCCACTTGCCCGGATGGATTCAAAATCCTTATGAAACAGACATGGCAGAGTAAGCCTCGCAACCGACC  
 TTCTTTAGCAGCAGCTCATGCATCTGGATATCGCGTCTGCAGATGTGCTCGCCACCCCTCAAGAACT  
 TACTTCAAGTCTCAGGCTGAATGGAGAGAAGAAGTGAAGAAACATTTTGAGAAAATCAAAAAGTGAAGGGA  
 CCTGTATACACCGATTAGATGAAGAAGTATTTCGCCGGCGCAGGGAGGAGCTCAGGCATGCTCTGGATAT  
 TCGGGAGCACTACGAGAGAAAGCTCGAACGGGCTAACAACTGTACATGGAGCTGAGCGCCATCATGCTG  
 CAGCTGGAGATGCGCGAGAAGGAGCTCCTAAGCGAGAGCAAGCAGTGGAAAAGAAGTACCCTGGAACCT  
 ACAAACGACACCCTGTCCGTCCAATCATCCACCCGAATGCCATGGAGAACTCATGAAAAGGAAGGGTGT  
 GCCTCACAAAGGCTGGGGTGCAGACTAAGCGGCCAGACCTGTTGCGATCCGAAGGCATTCTAGTACAGAA  
 GCGGTTCCCACTGCATCCCCCTGTCTGGAAGTCCAAAATGTCCACCGCAAGCAGCAGAAGCCGGTACC  
 GAAGCAAACACGTCACCGCCGAGGGAACAGTAGAGGCAGCCATAGCGACTTCGCAGCAATCTTGAAAAC  
 CCAGCCCGCCAGGAAAATTCACCCACCCACCTACATGCACCACACTCAGGCTCAGTCGCTTACGTC  
 CATCAACATAACCCTCTCCAGCAGCAATACCAGCAAATTCCTCCTGCCAGCCTCAGAGCCGGCATCCCA  
 GACTCAATGCGCATGGGCAGGACATTGCAACCTGCGCCAATAACCTGAGGTACTTTGGCCCCGACGGGC  
 CCTGCGGAGTCCACTCAGCAACCATGCACAAAGACAGATGCTGGCTCAAGCCCCGACCTCATCTCCACA  
 GCCATGGCTGCAGATTGGAGAAATCTGAACTTGATCAAGACCAAGTTGGACCCTGGGGCTGTTGTGAGG  
 CTGAACCTATGATCCCTGTTTCCAGTGCAGGCCAGAACATTCTGGTCTTTAGATGTTCCCACTACTGA  
 GCCAGTGGGAGGAGCCAGACCTTTCCAGTTCACCAGCACACAATCCTCTTTCAGGAAAATGCCAAAGGC  
 TCTGAGAGAACAGGGGCAAATGGATTAGTGGCTGTGAGTCTGGTATTTCTCATCAATTCACACCCCAA  
 TGCTACCTCAGAAGACACGGCCCTTCAAGAGTGGCGATGACTCCTCAGAAGGGAAGGGGAAGTGGGA  
 CAGTGAAGTAGAATTTCTCGACGACAGAGGCCTCACCGTGCATTAGCAGTTACCAGTCATACTCAACC  
 TTAGCTCCGAGAATTTCTGTGTCTGATGGAGAGGAGGGCAACACTAGTGACCACTCGAACAGTCCCG  
 ATGAATCCGCCAACAGACGGCAGGACCGCTGGCAGAGACGCTGGACGACCTGCTGTCTCAGACACCCGA  
 GGCCCCATCGAGATCTCTCCCACTCAGATGGGCTGTCTGACAAGGAGTGTGCTGTTCCGGCGGTGAAG  
 ACACAGATGTCCCTAGGCAAGCTGTGTGCCGAGGAGCGCGCTACGAGAACCCTGTGCAGTTTGGAGACT  
 CGGACTGTGACTTTCAGAGGGAGAGTGTCCGATGCCACAGTTAGGACCAGCAAGAACTACAGCTCTGC  
 CACCTGG

**ACGCGT**ACGCGGCCGCTCGAGCAGAACTCATCTCAGAAGAGGATCTGGCAGCAAATGATATCCTGGATT  
 ACAAGGATGACGACGATAAGGTTTAA

**Protein Sequence:** >MR214539 representing NM\_172821  
 Red=Cloning site Green=Tags(s)

MANPQEHLSCSSLPHLPLTENKTSGRNELAAMGNHPSPKLPEDPQERGAIQSELMEITGSPISTTVLTS  
 VSEDSRQGFENSVLQLREQDESEMTLSLGNSTVDGENTNGPEDIKIQFSRSGSGSGGLEGLFGCLRPV  
 WNIIGKAYSTDYKLLQQQDTWEVPFEEISELQWLGSGAQGAVFLGKFRAEEVAIKKVRQNETDIKHLRKL  
 KHPNIIAFKGVCTQAPCYCIIMEYCAHQQLYEVLRAGRKITPRLLVDWSTGIASGMNYLHLHKIIHRDLK  
 SPNVLVTHTDAVKISDFGTSKELSDKSTKMSFAGTVAVWMAPEVIRNEPVSEKVDIWSFGVVLWELLTGEI  
 PYKDVDSSAIIWGVGSNSLHLPVPSTCPDGFKILMKQTWQSKPRNRPSFRQTLMHLDIASADVLATPQET  
 YFKSQAEWREEVKKHFEEKSEGTCTIHLRDEELIRRRREELRHALDIREHYERKLERANNLYMELSAIML  
 QLEMREKELLKREQAVEKKYPGTYKRHPVRPIIHPNAMEKLMKRKGVPKAGVQTKRPDLLRSEGIPSTE  
 AVPTASPLSGSPKMSTASSRSRYRSKPRHRRGNSRGSDFAAILKTQPAQENSHPHTYMHTQAQCASV  
 HQHNPLQQYQQIPPAQPQSRHPRLNAHQDIATCANNLYFGPAAALRSPLSNHAQRQMPGSSPDLIST  
 AMAADWRNSELQDQVGPWGCCQAEYPDFCFQCRPEHSGSLDVPTTEPVGRSPDLSSSPAHNPLSGNAQG  
 SERTGANGFSGCQSGISHQFTPPMLPQKTRPLQKSGDDSSSEEEGEVDSEVEFPRRQRPHRCISSYQSYST  
 FSSENFSVSDGEEGNTSDHSNSPDESANRRQDRLAETLDDLSTQTPAETIEISSHSDGLSDKECAVRRVK  
 TQMSLGLKCAEERGENPVQFGSDCDSSEGECSDATVRTSKNYSSATW

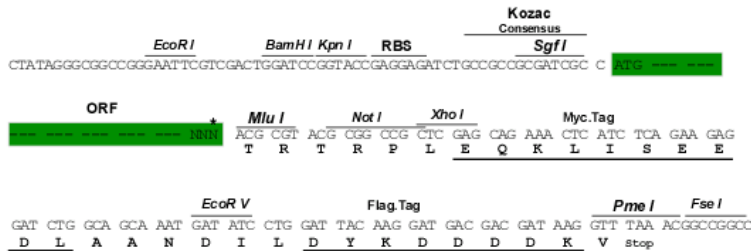
TRTRPLEQKLISEEDLAANDILDYKDDDDKV

**Chromatograms:** [https://cdn.origene.com/chromatograms/mm9009\\_d01.zip](https://cdn.origene.com/chromatograms/mm9009_d01.zip)

**Restriction Sites:** SgfI-MluI

**Cloning Scheme:**

Cloning sites used for ORF Shuttling:



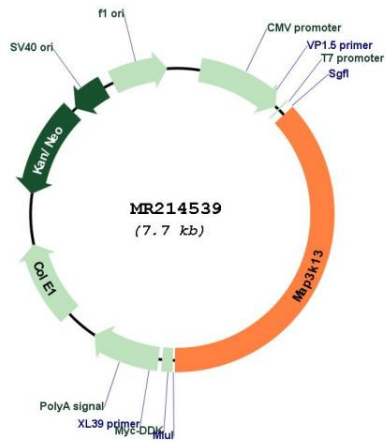
\* The last codon before the Stop codon of the ORF

**ACCN:** NM\_172821

**ORF Size:** 2877 bp

<b>OTI Disclaimer:</b>	<p>Due to the inherent nature of this plasmid, standard methods to replicate additional amounts of DNA in E. coli are highly likely to result in mutations and/or rearrangements. Therefore, OriGene does not guarantee the capability to replicate this plasmid DNA. Additional amounts of DNA can be purchased from OriGene with batch-specific, full-sequence verification at a reduced cost. Please contact our customer care team at <a href="mailto:custsupport@origene.com">custsupport@origene.com</a> or by calling 301.340.3188 option 3 for pricing and delivery.</p> <p>The molecular sequence of this clone aligns with the gene accession number as a point of reference only. However, individual transcript sequences of the same gene can differ through naturally occurring variations (e.g. polymorphisms), each with its own valid existence. This clone is substantially in agreement with the reference, but a complete review of all prevailing variants is recommended prior to use. <a href="#">More info</a></p>
<b>OTI Annotation:</b>	This clone was engineered to express the complete ORF with an expression tag. Expression varies depending on the nature of the gene.
<b>Components:</b>	The ORF clone is ion-exchange column purified and shipped in a 2D barcoded Matrix tube containing 10ug of transfection-ready, dried plasmid DNA (reconstitute with 100 ul of water).
<b>Reconstitution Method:</b>	<ol style="list-style-type: none"> <li>1. Centrifuge at 5,000xg for 5min.</li> <li>2. Carefully open the tube and add 100ul of sterile water to dissolve the DNA.</li> <li>3. Close the tube and incubate for 10 minutes at room temperature.</li> <li>4. Briefly vortex the tube and then do a quick spin (less than 5000xg) to concentrate the liquid at the bottom.</li> <li>5. Store the suspended plasmid at -20°C. The DNA is stable for at least one year from date of shipping when stored at -20°C.</li> </ol>
<b>RefSeq:</b>	<a href="#">NM_172821.3</a> , <a href="#">NP_766409.2</a>
<b>RefSeq Size:</b>	6709 bp
<b>RefSeq ORF:</b>	2880 bp
<b>Locus ID:</b>	71751
<b>UniProt ID:</b>	<a href="#">Q1HKZ5</a>
<b>Cytogenetics:</b>	16 B1
<b>MW:</b>	107.4 kDa
<b>Gene Summary:</b>	<p>Activates the JUN N-terminal pathway through activation of the MAP kinase kinase MAP2K7. Acts synergistically with PRDX3 to regulate the activation of NF-kappa-B in the cytosol. This activation is kinase-dependent and involves activating the IKK complex, the IKBKB-containing complex that phosphorylates inhibitors of NF-kappa-B (By similarity).[UniProtKB/Swiss-Prot Function]</p>

Product images:



Circular map for MR214539