

Product datasheet for MR214358

Teddm1b (NM_001008426) Mouse Tagged ORF Clone

Product data:

Product Type: Expression Plasmids
Product Name: Teddm1b (NM_001008426) Mouse Tagged ORF Clone
Tag: Myc-DDK
Symbol: Teddm1b
Synonyms: EG433365; Gm5531
Mammalian Cell Selection: Neomycin
Vector: pCMV6-Entry (PS100001)
E. coli Selection: Kanamycin (25 ug/mL)
ORF Nucleotide Sequence: >MR214358 representing NM_001008426
 Red=Cloning site Blue=ORF Green=Tags(s)

TTTTGTAATACGACTCACTATAGGGCGGCCGGAATTCGTCGACTGGATCCGGTACCGAGGAGATCTGCC
 GCC**CGATCGCC**

ATGGGGAATGGAAAGTTGGCGGCCATTCTACCCGGGCTTATACATTTCTTTTATGGACTGTATCAGG
 CAACACTGATCTCCAAGGCCGTGATAGTCAGTGACTCATCTGGGTATGTTACCTACTCTCCTAAGAATAA
 AAAGAGATGTGCCAAGCTGAAAATATCTTATGGAGGCTGGCTGAAGATAGTGACTGGCTCCCTCTTAGCA
 TTTTATGTGGTCTTCTGTCTTGATGATGGGATGGTGTGATTAACAAAGGGATGCCTCCAAGTTTATGT
 ACCCCAAGGAGTGGCAGCACCTACCATGTTTCATCCTCCTCGCCCTCGATGGTTGTGCAGACGTCATAAG
 CAAGAACGTGCTACGGCAGAGGTGCGTGCCTAGAAAAGAGGTGCCACTGTGCTGAGCTTCTATGTGCTC
 CTGCTGCTGCTGGTGTCTCACGTTAAAGAATCATCTGGGGTGGAGCTGCAGGTTCACTCTCTCCTCATCT
 TGGTGGTGTTCCTGCTGATGCTGGTGTGACGGCAGAGCTCTGGGCTCCTGAAATGTTTCACCTCAGGAT
 GATAGAGACCTTCCTGTTCTGATGATGGGCTCGTGGCTGATTACGGCAGCCTTCATTCTCTTTAGACCA
 GTCTCTGGCTTCCTGTGGGAGGATGGTGACATCAGTGACATCATGTTTGTACCACCTTCTTCTGCTGGC
 ATGTGATGATCAACGCCATTATGCATGTTGGGAATCATGGTGTCTCTTCTTTTGGCACCCTGTTACAG
 TCCCAGCTTGAGGCTGATGGGGTCCAAGGAAGCGCTGTATCAGGAGAGCTTTCAGGAACCTTCTACAAG
 CTGCTGCAGGAGGCAGAGCAGCAGGACAAGATAACCAGGCTCCTCTCTTTCAAAGATCTCTCCCTGTG
 ACAGGGCC

ACGCGTACGCGGCCGCTCGAGCAGAAACTCATCTCAGAAGAGGATCTGGCAGCAAATGATATCCTGGATT
 ACAAGGATGACGACGATAAGGTTTAA



[View online »](#)

Protein Sequence: >MR214358 representing NM_001008426
Red=Cloning site Green=Tags(s)

MGNGKFGGHFYPLYIFFYGLYQATLISKAVIVSDSSGYVTYSPKNKKRCAKLIKISYGGWLKIVTGSLLA
 FYVVFCLDDGMVLINKGMPPRFMYPKEWQHLTMFILLALDGCADVISKNVLRQRCVLLERATVLSFYVL
 LLLLVSHVKESSGVELQVHSLILVVFLLMLVLTAELWAPEMFHLRMIETFLFLMMGSWLIQAAFILFRP
 VSGFLWEDGDISDIMFVTTFFCWHVMINALCMLGIYGVSSFVHRCYSPSLRLMGSKEALYQESSSGTFYK
 LLQEAQQDKDNQAPLLSKI SPCDRA

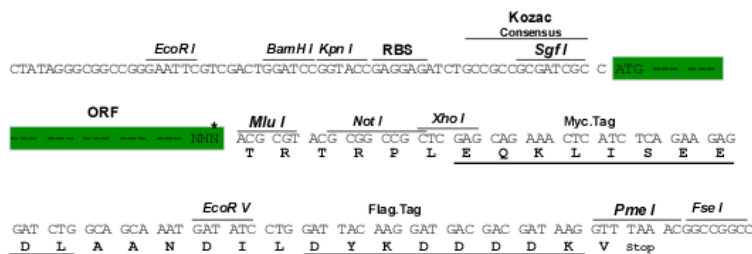
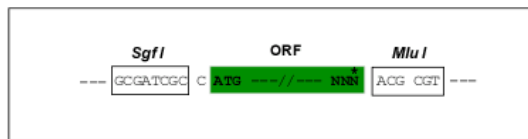
TRTRPLEQKLISEEDLAANDILDYKDDDDKV

Chromatograms: https://cdn.origene.com/chromatograms/mm9023_e09.zip

Restriction Sites: SgfI-MluI

Cloning Scheme:

Cloning sites used for ORF Shuttling:



* The last codon before the Stop codon of the ORF

ACCN: NM_001008426

ORF Size: 918 bp

OTI Disclaimer: The molecular sequence of this clone aligns with the gene accession number as a point of reference only. However, individual transcript sequences of the same gene can differ through naturally occurring variations (e.g. polymorphisms), each with its own valid existence. This clone is substantially in agreement with the reference, but a complete review of all prevailing variants is recommended prior to use. [More info](#)

OTI Annotation: This clone was engineered to express the complete ORF with an expression tag. Expression varies depending on the nature of the gene.

Components: The ORF clone is ion-exchange column purified and shipped in a 2D barcoded Matrix tube containing 10ug of transfection-ready, dried plasmid DNA (reconstitute with 100 ul of water).

Reconstitution Method:

1. Centrifuge at 5,000xg for 5min.
2. Carefully open the tube and add 100ul of sterile water to dissolve the DNA.
3. Close the tube and incubate for 10 minutes at room temperature.
4. Briefly vortex the tube and then do a quick spin (less than 5000xg) to concentrate the liquid at the bottom.
5. Store the suspended plasmid at -20°C. The DNA is stable for at least one year from date of shipping when stored at -20°C.

RefSeq: [NM_001008426.3](#), [NP_001008426.1](#)

RefSeq Size: 2527 bp

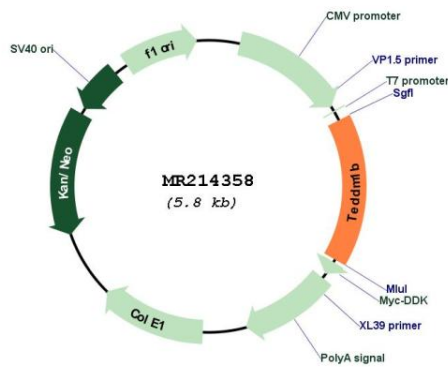
RefSeq ORF: 921 bp

Locus ID: 433365

Cytogenetics: 1 G3

MW: 35.2 kDa

Product images:



Circular map for MR214358