

Product datasheet for MR214303

Daw1 (NM_027725) Mouse Tagged ORF Clone

Product data:

Product Type:	Expression Plasmids
Product Name:	Daw1 (NM_027725) Mouse Tagged ORF Clone
Tag:	Myc-DDK
Symbol:	Daw1
Synonyms:	4930563E19Rik; 4933429D11Rik; b2b1116Clo; b2b1584Clo; Wdr69
Mammalian Cell Selection:	Neomycin
Vector:	pCMV6-Entry (PS100001)
E. coli Selection:	Kanamycin (25 ug/mL)
ORF Nucleotide Sequence:	>MR214303 representing NM_027725 Red=Cloning site Blue=ORF Green=Tags(s)

TTTTGTAATACGACTCACTATAGGGCGGCCGGAATTCGTCGACTGGATCCGGTACCGAGGAGATCTGCC
GCC**CGATCGCC**

ATGAAGCTTAAGAGCCTCTTGCTTCGCTATTACCCACCAGGAATTATGCTGGAATATGAAAAAGGTGGAG
AATTAAGACGAAATCCATAGATTTACTTGAGCTCAGTCCTAGTACTGATGTCAACACCCTAGTAGGAGA
GATCCAGCAAGCAGAGCCTCTGATCACAGCGTCCCGGACAAAGCAAGTCAGACTCCTAGTCAGAGGCTT
CAGGAGAACTCAGACAGCATAGCGACCACAATTCTACCTGTTAAGGTTCTCAGAGCACACATATTGC
CATTGACCAACGTGGCACTCAACAAAGCAGGCTCCTGCTTATCACCGGAAGCTATGATCGGACCTGCAA
GGTGTGGGACACGCGCTCTGGAGAGGAGCTGCACACCCTGGAGGGCCACAAGAATGTGGTGTATGCCATA
GCCTTCAACAATCCTTACGGGAAGGTGCACACTTTAATTGGTCACTGTGCTGAGATCAGCAGCGCCTTGT
TCAATTGGGATTGCTCTAATACTAACAGGCTCCATGGACAAGACCTGCATGTTGTGGGATGCTACAAG
TGGGAAATATGTAGCAACCTTAACAGGCCATGACGATGAGATCCTAGACAGCTGCTTTGATTATACTGGA
AACTTATCGCAACAGCTTCTGCCGATGGAACGGCAAGAGTTTACAATGCAACCACAAGAAAGTGTGTA
CCAACTGGAAGGCCATGAAGGAGAAATCTCAAAGATCTCCTTCAATCCCAAGGAAACCGGCTCCTGAC
GGCAGCTCTGATAAGACAGCCAGAATCTGGGATGTTCAAGTGGCCAGTGCCTCCAGGTCCTTGAGGGG
CACACTGATGAAATATTTTCATGTGCTTCAACTATAAAGGGAATATAGTCATTACAGGCAGCAAGGACA
ACTCCTGCAGGATATGGCGT

ACGCGTACGCGGCCGCTCGAGCAGAACTCATCTCAGAAGAGGATCTGGCAGCAAATGATATCCTGGATT
ACAAGGATGACGACGATAAGGTTTAA



[View online »](#)

Protein Sequence: >MR214303 representing NM_027725
 Red=Cloning site Green=Tags(s)

MKLKSLLLRYPPGIMLEYEKGGELKTKSIDLLELSPSTDVNTLVGEIQQAEPLITASRTKQVRLLVQRL
 QEKL RQHSDHNFYLFKVLRAHILPLTNVALNKAGSCFITGSYDRTCKVWDTASGEELHTLEGHKNVYAI
 AFNPNYGVKVTLIGHCAEISSALFNWDCSLILTGSMDKTCMLWDATSGKYVATL TGHDD EILDSCFDYTG
 KLIATASADGTARVYNATTRKCVTKLEGHEGEISKISFNPOGNRLLTGSSDKTARIWDVQTGQCLQVLEG
 HTDEIFSCAFNYKGNIVITGSKDNSCRIWR

TRTRPLEQKLISEEDLAANDILDYKDDDDKV

Chromatograms: https://cdn.origene.com/chromatograms/mm9060_g09.zip

Restriction Sites: SgfI-MluI

Cloning Scheme:

Cloning sites used for ORF Shuttling:



* The last codon before the Stop codon of the ORF

ACCN: NM_027725

ORF Size: 930 bp

OTI Disclaimer: The molecular sequence of this clone aligns with the gene accession number as a point of reference only. However, individual transcript sequences of the same gene can differ through naturally occurring variations (e.g. polymorphisms), each with its own valid existence. This clone is substantially in agreement with the reference, but a complete review of all prevailing variants is recommended prior to use. [More info](#)

OTI Annotation: This clone was engineered to express the complete ORF with an expression tag. Expression varies depending on the nature of the gene.

Components: The ORF clone is ion-exchange column purified and shipped in a 2D barcoded Matrix tube containing 10ug of transfection-ready, dried plasmid DNA (reconstitute with 100 ul of water).

Reconstitution Method:

1. Centrifuge at 5,000xg for 5min.
2. Carefully open the tube and add 100ul of sterile water to dissolve the DNA.
3. Close the tube and incubate for 10 minutes at room temperature.
4. Briefly vortex the tube and then do a quick spin (less than 5000xg) to concentrate the liquid at the bottom.
5. Store the suspended plasmid at -20°C. The DNA is stable for at least one year from date of shipping when stored at -20°C.

RefSeq: [NM_027725.3](#), [NP_082001.2](#)

RefSeq Size: 1371 bp

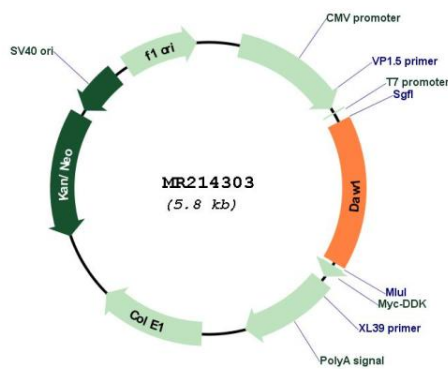
RefSeq ORF: 933 bp

Locus ID: 71227

Cytogenetics: 1 C5

MW: 34.5 kDa

Product images:



Circular map for MR214303