

Product datasheet for **MR214276**

Olfr577 (NM_147109) Mouse Tagged ORF Clone

Product data:

Product Type: Expression Plasmids
Product Name: Olfr577 (NM_147109) Mouse Tagged ORF Clone
Tag: Myc-DDK
Symbol: Olfr577
Synonyms: MOR7-2
Mammalian Cell Selection: Neomycin
Vector: pCMV6-Entry (PS100001)
E. coli Selection: Kanamycin (25 ug/mL)
ORF Nucleotide Sequence: >MR214276 representing NM_147109
 Red=Cloning site Blue=ORF Green=Tags(s)

TTTTGTAATACGACTCACTATAGGGCGGCCGGAATTCGTCGACTGGATCCGGTACCGAGGAGATCTGCC
 GCC**CGGATCGCC**

ATGACTCCAGGACCCCTAGGAAATGGAAGCATGTCTTCTACCTTCTTGCTGAGTGGCATCCCTGGGCTGG
 AGCAGATGCATATCTGGATCTCCCTTCCACTCTGTCTCATGTACCTGGTTCCATCCTGGGTAAGTGCAC
 AATCCTTTTTATAATTAAGACAGAGCCCTCACTCCATGAGCCCATGTACCTTCTCCTGTCCATGCTCGT
 CTGACTGACCTTGGTCTCTCTTTGTACCTCCCTACAGTGCTAGGCATCTTTGGGTGGGAGCAGAG
 ACATTAGCCATGATGCTTGTCTTACCCAGCTCTTTTTCATCCACTGCTTGTCTTCTTAGAATCCTCTGT
 GCTTCTCTATGGCCTTTGATCGCTTTGTGGCTATCTGTGCTCCTTTGCACTATGCTTCCATCCTCACC
 CACACAGTGATTGTCAGAATAGGTCTGGCCTCTCTGGGCCGTAGTGTGCACTCATTTCCTCATTGCCTT
 TCATGCTCAAACGGTTCCTTACTGTGGCTCCCTAGTTCTCTCACATTCTATTGTCTCCATCAAGAAGT
 GATGAAACTGGCCTGTGCAGACATCAAGGCAAACAGCATTTATGGCATGTTGTCATTGTTTCTACAGTG
 GGAGTGGACTCTTTGCTCATCCTCTTCTCCTATGCACTTATTCTGCGCACCGTATTGTCCATTGCCTCAA
 GGGCTGAAAGACTCAAAGCTCTCAATACATGCGTTTCACACATCTCTGCTGTGCTTCTGTCTATACTCC
 CATGATAGGATTGTCTGTAATCCACCGCTTTGGGAAACAGGCCCCCATCTAGTTCAGGTGGTTCATGGGC
 TTTGTGTATCTCCTCTTCCCTCTGTGATGAACCTATTGTCTATAGTGTCAAGACCAAACAGATACGGG
 ATAGGGTAGCCCATGCCTTTTGAAC

ACGCGTACGCGGCCGCTCGAGCAGAAACTCATCTCAGAAGAGGATCTGGCAGCAAATGATATCCTGGATT
 ACAAGGATGACGACGATAAGGTTTAA



[View online »](#)

Protein Sequence: >MR214276 representing NM_147109
Red=Cloning site Green=Tags(s)

MTPGPLNGSMSSTFLLSGIPGLEHMHIIWISLPLCLMYLVSILGNCTILFIIKTEPSLHEPMLFLSMLA
 LTDLGLSLCTLPTVLGIFWVGARDISHDACFTQLFFIHCLSFLESSVLLSMAFDRFVAICRPLHYASILT
 HTVIVRIGLASLGRSVALIFPLPFMLKRFPYCGSLVLSHSYCLHQEVMKLACADIKANSIYGMFVIVSTV
 GVDLLILFSYALILRTVLSIASRAERLKALNTCVSHISAVLLFYTPMIGLSVIHRFGKQAPHLVQVVMG
 FVYLLFPPVMNPVYYSVKTKQIRDVAHAFCN

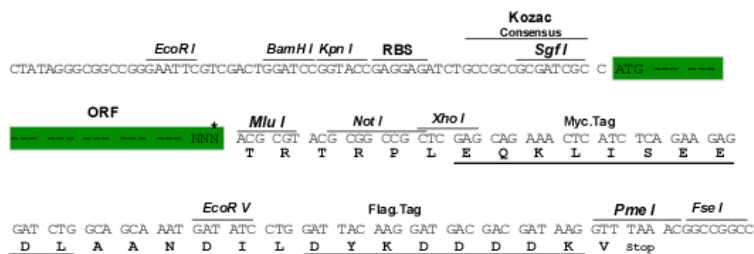
TRTRPLEQKLISEEDLAANDILDYKDDDDKV

Chromatograms: https://cdn.origene.com/chromatograms/mm9022_e08.zip

Restriction Sites: SgfI-MluI

Cloning Scheme:

Cloning sites used for ORF Shuttling:



* The last codon before the Stop codon of the ORF

ACCN: NM_147109

ORF Size: 936 bp

OTI Disclaimer: The molecular sequence of this clone aligns with the gene accession number as a point of reference only. However, individual transcript sequences of the same gene can differ through naturally occurring variations (e.g. polymorphisms), each with its own valid existence. This clone is substantially in agreement with the reference, but a complete review of all prevailing variants is recommended prior to use. [More info](#)

OTI Annotation: This clone was engineered to express the complete ORF with an expression tag. Expression varies depending on the nature of the gene.

Components: The ORF clone is ion-exchange column purified and shipped in a 2D barcoded Matrix tube containing 10ug of transfection-ready, dried plasmid DNA (reconstitute with 100 ul of water).

Reconstitution Method:

1. Centrifuge at 5,000xg for 5min.
2. Carefully open the tube and add 100ul of sterile water to dissolve the DNA.
3. Close the tube and incubate for 10 minutes at room temperature.
4. Briefly vortex the tube and then do a quick spin (less than 5000xg) to concentrate the liquid at the bottom.
5. Store the suspended plasmid at -20°C. The DNA is stable for at least one year from date of shipping when stored at -20°C.

RefSeq: [NM_147109.1](#), [NP_667320.1](#)

RefSeq Size: 939 bp

RefSeq ORF: 939 bp

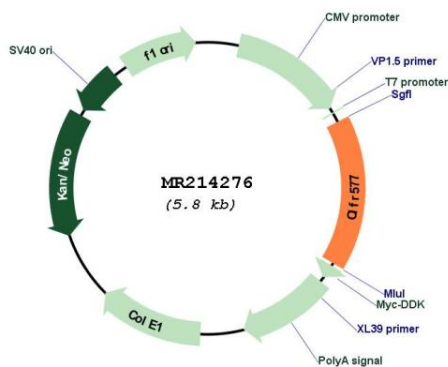
Locus ID: 259113

Cytogenetics: 7 E3

MW: 35 kDa

Gene Summary: Olfactory receptors interact with odorant molecules in the nose, to initiate a neuronal response that triggers the perception of a smell. The olfactory receptor proteins are members of a large family of G-protein-coupled receptors (GPCR) arising from single coding-exon genes. Olfactory receptors share a 7-transmembrane domain structure with many neurotransmitter and hormone receptors and are responsible for the recognition and G protein-mediated transduction of odorant signals. The olfactory receptor gene family is the largest in the genome. The nomenclature assigned to the olfactory receptor genes and proteins for this organism is independent of other organisms. [provided by RefSeq, Jul 2008]

Product images:



Circular map for MR214276