

## Product datasheet for MR213852

### Kctd18 (NM\_001159864) Mouse Tagged ORF Clone

#### Product data:

Product Type:	Expression Plasmids
Product Name:	Kctd18 (NM_001159864) Mouse Tagged ORF Clone
Tag:	Myc-DDK
Symbol:	Kctd18
Synonyms:	4932411A20Rik; 6530404F10Rik
Vector:	pCMV6-Entry (PS100001)
E. coli Selection:	Kanamycin (25 ug/mL)
Cell Selection:	Neomycin
ORF Nucleotide Sequence:	>MR213852 representing NM_001159864 Red=Cloning site Blue=ORF Green=Tags(s)

TTTTGTAATACGACTCACTATAGGGCGCCGGAATTCGTCGACTGGATCCGGTACCGAGGAGATCTGCC  
GCC**CGGATCGCC**

ATGCTTAAGGCAGAAGCTCAGGCATCGAAGGGAGCAATGGCAGGCCATGAAGCAGAAGACGTGCTAGATA  
TCCTTCGGCTGAATGTGGGTGGCTGCATCTACACAGCCCGCGAGAGTCTTTGTGCCGCTTAAGGATTC  
TATGCTGGCATCTATGTTTAGTGGTCGTTCCCTCTAAAAACAGATGAATCTGGGGCGTGCATTATTAAC  
CGTGATGGACATCTATCAAATACATTTTGGACTACCTGCACGGGAGGTGCAGACCCCTCGGATGAGC  
AGACGCGAGCTGCCCTGCAGGAGGAGGCTGACTACTTTGGCATCCCTTACCCGTACAGCTTGTCTGACCA  
CTTGGCCAATGAGATGGAGACATATTCTTTAAGGTCAAATATAGAACTTAAAAAGGCTTTAACAGACTTC  
TGTGATTCCTATGGCTTAGTTTGAATAAACCAACAGTTTGGGTCTCCACTATCTTAACACATCTGGTG  
CAAGCTGTGAGAGTAGAATTATTGGTGTCTATGCTACAAAACTGACGGGACAGATGCCATTGATAAGCA  
GCTGGGAGGAAGGATTCATAGTAAAAGCATTTCAAAAGAGAGGGCGGGAACAACGTTTCACTACATTTGG  
AGCTATTACTCAGTAGCCGAGTTGAAGAAAATGATGGATGCCTTTGATGCTTGGGAAGGAAAAGGGTAA  
GCTACTGGCGTGTGCCTCATGAGCTGATAGAGTGTGGACTTTGGAAGAACGGCTTTACACGGAAGCCT  
GGTCATATGGCCCAATTCGAAAGAGGGCGCTGATAGCCCTCAGGGAAGAGGATGAAGGTGTGAAGTGT  
AAGACTGGTCTAAGCCAGTCAGATTTTGGGCCCTTCTACAAGTACCCAAATTAAGTCAAGAAGTCTG  
CTTCAGTGAGGGTGTACCTGCCAATGCTGCCAGATCTCCTCTCAGGCTACAGCAAACCGCTCTCACAG  
AGGCAGCTGTGGAAGGCAGCCAGTGTCTGTGGCCACAGGGCTTCTGGGCATGCTCCCGCTTCCCC  
GATGCCAGAGCTCTGAAAACCAAGCCACACACCCACCTCCAGCCAAGGTGCTCCTCTGAAAAGAAGT  
CTCCACCCCTCGAGTGTCAAGCTGAGGAGGACTCCACTGCGTGGGGGGCTTCCCTGCCACCGCCTC  
AGCAGGGGGCCAGGCTGCTTCCCCAGCCACCCTCTCTAGAAGCTTCCAGCAGTTGGGTGTGCAGATG  
GAGACCAGGAAAGACCAGCCTGATGGG

**ACGCGT**ACGCGGCCGCTCGAGCAGAAACTCATCTCAGAAGAGGATCTGGCAGCAAATGATATCCTGGATT  
ACAAGGATGACGACGATAAGGTTTAA



[View online »](#)

**Protein Sequence:** >MR213852 representing NM\_001159864  
 Red=Cloning site Green=Tags(s)

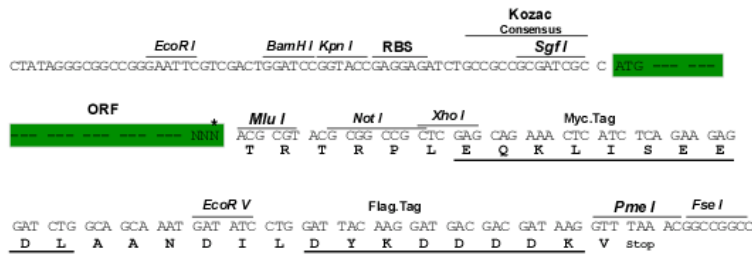
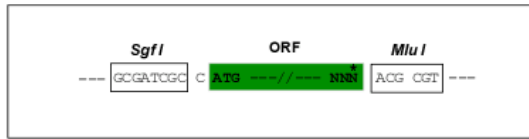
MLKAE LQASKGAMAGHEAEDVLDILRLNVGGCIYTARRESLCRFKDSMLASMFSGRFPLKTDESGACIIN  
 RDGHLFKYILDYLGHEVQTPSDEQTRAAALQEEADYFGIPYPYSLSDHLANEMETYSLSNIELKKAL TDF  
 CDSYGLVCNKPTVWVHLNLTSGASCESRIIGVYATKTDGTD AIDKQLGGRIHKSIFKREAGNNVQYI W  
 SYYSVAELKKMMDAFDAWEGKGVSYWRVPHELIECWTLERPLHGSLRHMAPIRKRR LIALREEDEGVNC  
 KTGPKPVRFLGPSTSTQIKVKNSASVRVSPANAAQISSQATANRSHRGSCGKAAQCSVATGASGHAPASP  
 DAQSSSENQATHPPPAKVLLSEKKSPPPRVIKLRRTPLRGGPSLPTASAGGQACFPQPPSLEASSSLGVQM  
 ETRKDQPDG

TRTRPLEQKLISEEDLAANDILDYKDDDDKV

**Restriction Sites:**  
**Cloning Scheme:**

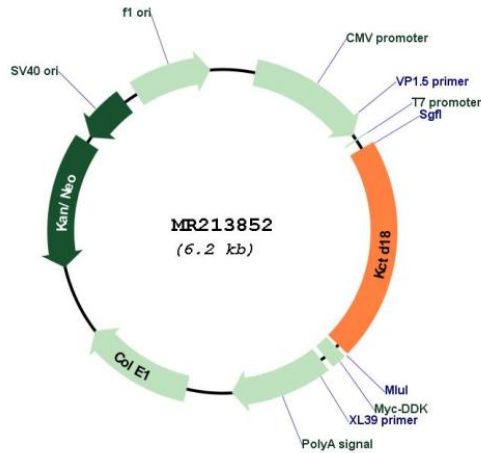
SgfI-MluI

Cloning sites used for ORF Shuttling:



\* The last codon before the Stop codon of the ORF

**Plasmid Map:**



**ACCN:** NM\_001159864

<b>ORF Size:</b>	1287 bp
<b>OTI Disclaimer:</b>	The molecular sequence of this clone aligns with the gene accession number as a point of reference only. However, individual transcript sequences of the same gene can differ through naturally occurring variations (e.g. polymorphisms), each with its own valid existence. This clone is substantially in agreement with the reference, but a complete review of all prevailing variants is recommended prior to use. <a href="#">More info</a>
<b>OTI Annotation:</b>	This clone was engineered to express the complete ORF with an expression tag. Expression varies depending on the nature of the gene.
<b>Components:</b>	The ORF clone is ion-exchange column purified and shipped in a 2D barcoded Matrix tube containing 10ug of transfection-ready, dried plasmid DNA (reconstitute with 100 ul of water).
<b>Reconstitution Method:</b>	<ol style="list-style-type: none"><li>1. Centrifuge at 5,000xg for 5min.</li><li>2. Carefully open the tube and add 100ul of sterile water to dissolve the DNA.</li><li>3. Close the tube and incubate for 10 minutes at room temperature.</li><li>4. Briefly vortex the tube and then do a quick spin (less than 5000xg) to concentrate the liquid at the bottom.</li><li>5. Store the suspended plasmid at -20°C. The DNA is stable for at least one year from date of shipping when stored at -20°C.</li></ol>
<b>RefSeq:</b>	<a href="#">NM_001159864.1</a> , <a href="#">NP_001153336.1</a>
<b>RefSeq Size:</b>	2615 bp
<b>RefSeq ORF:</b>	1290 bp
<b>Locus ID:</b>	51960
<b>Cytogenetics:</b>	1 C1.3
<b>MW:</b>	47.4 kDa