

Product datasheet for MR213818

Ice1 (NM_144837) Mouse Tagged ORF Clone

Product data:

Product Type:	Expression Plasmids
Product Name:	Ice1 (NM_144837) Mouse Tagged ORF Clone
Tag:	Myc-DDK
Symbol:	Ice1
Synonyms:	C77245; mKIAA0947
Mammalian Cell Selection:	Neomycin
Vector:	pCMV6-Entry (PS100001)
E. coli Selection:	Kanamycin (25 ug/mL)
ORF Nucleotide Sequence:	>MR213818 representing NM_144837 Red=Cloning site Blue=ORF Green=Tags(s)

TTTTGTAATACGACTCACTATAGGGCGGCCGGAATTCGTCGACTGGATCCGGTACCGAGGAGATCTGCC
GCC**CGATCGC**C

ATGATGCCCGCGAGACGCACCCGGCGGCCCGGCCAGCCGACCTCGCGCGGTGTCAGGGCTGCGCCT
CCCTGCAGCAGAACTTAAATGAATATGTTGAAGCATTAAATGCCTTGAACAAAAAATTATTAATACAGA
TAACCTGCTGACGAATATCAGAAGAAATGCGATGAGCTGCAGTTTGAAGAAGAGAGAACAGCACACTG
CATCACCAAGTGGAGCAGATGCTCCAGAAAATCTCCCTCTGCAGAAGTGTCAAGAAGAATTGGGATCCT
TGAAAGCTGAGCTGGAGGAGAAAAGAGTTCTCTGAAGCTGTATCAGGACTCACCAGGAATATGCTCG
TGTGAAAGAAGAATGCCTGAGAACTGATGCCAGAAAGAAACTAGAAGCTAAGGTGAAGAAGCTGGAA
GAGGCTGCTGTAAGCAAACTCAGGACTTCAAGCAACTGAGAAATGAAAAGAAAATACTTAAAAGGAGT
TTAAGAAGACACAGGAAAGGCTTGTGAAATTTTCCAAACAGAAAATGAGAAGGAGTTGAGACACATCGG
GACACAAATCTCAAGCGACTCGCACGGAAGCATAGATAAGAGGAAGGTGAAAGTTCTCCTGAAGGAGCTG
TGGCTCTGTGTAACACTGCGCACAGACTCTCCGGGAGGGCGGCAGACGGATCCAGAAAAACCTGCCA
AAGGAAGCAGTGCAGCCGAGCCTCTGAGCAAGATGAGCTGCTCCAGTGAAGTGGCCCTGCCAGGGC
CGCAGACATGCGTTCCTTCTTCCAAGCTGTCCATGGAGATGGAGGGTGACTTTTCTTCTCGGAGAGT
GCTGAAGAAGAGCTGCCAGTGGGGCAAGCCCAGCACTGAGCATGCTTTTTGTGAGGAGAGGCATTCTG
AAGTCTCAGGGCAGAGGCTGATGATGGCAACAGGACCAACGTCTATGACCACGAACACTTTTTTGTATGA
TGATCTCAAGCTGCAATTGACTTCTTCAAACCTCCCCCTCCTCTCTGTCTCCAGTGCCCTCACCCCT
CCGATGGCATCAGGCTCTTACCTTCTTCCCTGGCACCTGAATCCTTCTTGGAGAGTTCACGGATTCCA
GCGATAGTGACTCTGTCCACCGAGAGACTCTATGGAATCAGCTTTGGAAGATTACACAGCAGAGTCACG
GGCTTATTTTACTTGTGAAAAAATTAAGAGGAGTGACCAATACGTGAAAAAGCCTGGGTCACTGGAA
GCCACCCAGGCTGTAACAGTCTGACACCTCTGGATTGTTACTGGAAGAACAGCACTGGGAGAACCCT
CAGCCGACGTTCTAGCTCAGGGAAGGCACTGGACTGAATCATCTGAATTTGTGAGGGACAGAGGAGA
CTCTGTAGAAGAGGCAGAAAGAATGGTGGAGGCCAGGAGGTGGATAAGTCTGTCAAGTTGGGAAAGG



[View online »](#)

CTGCTGAAGCATAACAGAAAACCTGTGGCTAGAGATGGCATCCAGAGGCCAGCACGAAAGAAGGAAGCTG
GAGCTGGGGAGTCAGAGATTTGTTTTCTCCCTTGGCAAGAGGACCTTCAGTGAATCATAGAATCTGA
AGGAAAAACCTGTCGTCAAAGCTTTGTGTCCATCCCAGTCAGAATTTTCTAAACGGACTCACTGAT
GGATCTGCTTCCAAGTCAACCTGTGTGACTGGTCTGGCCGTTTTAGAGAAAGGAAAGAGATGTGCGGG
AGTCCACTCCCCAGTCAGGCATATGTGCAGCTGCAGCAGGTCTGGCCATTTCGGCTAGGCTTCCCTCTTC
TTCCTCTGCTACCTCGGTACCAGTGTGGTCTGCAGTAACCACCAGACTCCATGGCCAGGGTGTGCAGT
GTAGGCCTCCAGCAGAAGGAACCTGCACAGAACAAAAGTCAACCACTAGAACTTTAAACACATTTCTTC
TGCGGTCTGAGCCAACAGCATGTTTCCAAAAGAAAATGACCCAGAAAACAGCTTGTCTACTTTGAGTCC
AAAAGTCAAAATTAGGAACATCTACCTTTAGTGACTGGAAGAAGCAGGGGCCTGGAATCTTTAGCACTTTA
AAAAGCACAGCGAAGGGACTCGCTTCCCAGTCAGTATTTCCGAAGCCAAACAGGAGGTGGACAGTGTA
AAGGCCGAGGGCCAGGCGCTACTCTACTGCCTAAGTCAGACTGGACCTCACTGGCACGTTTCGACGGC
TGGCTTACCAGAAGGAGCTCTGGCTCTGCTGACAGTACCTCATGGCACCGCAGTGATGTCCTAAGGCGA
GGTAGTGGGGTAGCCCCAGAGCTTCTCAGAGTACCAGCAAAGGACCAGGCTCCAGCTAGAGAAAGCCA
CACCGGCCTCACAGAACAGCAGCCTAACAGCTATGCATGGACCTTCTGGAGAAAGTACCATCCCTCCAGA
ATCTAATGCAGCTGCTGCTTTGCTGCCAAACCAAGTGTGAGTATAACAAAGCAGGCAAGACCAAGGAGG
GTGCTGGGTAGCAGCCTGGAACCTGGCAGCCACATGGGAACACACTGAGCCCTGCTGTAATGGTGGCA
AGGAGACAGGTCTTATGCCATCAGTATCAGCCTGTGTTGGAGATGGAGACCCCATAGCACAGGTCCCAGA
GCAGATAGCTGATAAAGAAAACCCCTTCTCCAGAAGTATCTGTGCTTGGCGAAACCCCATTTGTGATTCT
CCAAGCGACTCCTTGCTTGACAGAGAAGTCTTGTGCTCCACAGATCGTAAGTTACCGTTCTCCTCTGAAG
ACAACATCTTCCAATGTGCTATGAATGAACACTGCAGCAGAAGCCACGAAGTCTCCCAAAACACACA
GTCAGGTGCCAGTAGGCTGGAGGCTGGGAGCTGCTTCCGTCTGGGGTACATCGGGAGTCTTCCCTGCT
GAGCAGGTGCCCATGGACCTCATCACCAGGCAGACACTGAAGCCCTGTAGTTGCCAGAGAGTCTCATA
GTGCTCCACAGAATGCCAGTGCACCTCCGTAAGTGCAGCAGGGGCTCTCAGAGCTCGTGTGCCAC
AGTCCCTGTTTGCCTTCAAGCCTCAGCCGTGCAGAAGAGGAGACAAAGGGACCTCCCAAGTAGTCTT
CCTGGGGCTTCTACTGCTACACAGGTATCAGAGAGCGGGGAGAGGAAGACACCGAAGTAGAGGATGAAG
CTGTTAGTTGAGTGAGGGAGAGCATGAGGCTGAAGCTGTGATGGGGCGCAGACAACAGGAGCAAGCGGA
AGACTCACATAGACCTTTGGGAGACCCAGAGGCTGGGGTGGTGAGGCAGGACACCCCTCAGATGTAGGT
GATCTGACCTCCGCACTGAAGAATGTAACTAAGCACCTTCTTTACATAGACAAGCTTTCTACATCAG
AGGTGGTTATGGTTCTTGAAGTTGTGAGTTAGGAGATTATAGTTCGAGGGTCTCTGCTCAGAATGTGC
GAGCAAAGGAAGCCTGAGTGAAGAAATGAACACAGAGTTAAGGCAAAGTGAATCTCCAGAAAGAAGTGT
GGGAAGAGGCTCTGGGAAGAAAAGCTACTTAGAGCCTCGGAAGAGTGGGCTGAGTCAGAGGGGGATGACT
CTTGTTGGTAGGACCTCATGCCAGCATGCTCAGTGTCTCTGGAAGTGCCATCTGACGTTCTCACCAAGAC
CGGGGAAGAACTCGATACAAACCTGTGGACTGTGGTGGGACGGATACCGAGCATGCATTGCTTGAAGT
ACGCATCACAGCCAGGCAGCCGAAGATCTGACAGAAGATGCTCTGCCTGAGGAAACGTCCAGCCCATGC
CCCACACTGCTGAGTTGCTGACCCATCAGCTGTGGATGGTGGGGCAGCTCCCACTCAGTAGCAGGTC
TGACCCTGAGCACATTAGAGCAGCTATGAGGATGAGCCTAATTTGGGGAGTGCCTCAGCATTGGGGAA
GAGGGCCTAGCAGAACCTGGGGAGCTGTGACCCTGAGTTCTGACTCTTCAACCCCAAGGTTAGAGC
AAAGTTCTGATTGTGGCAGAGACGGCGTTTCGGTACCAGATCTCCGCAGTGACCTCCGAGGTTATAAG
TGTAATTATAAATAAGGATCAAGACCTTGTGATTGAAAAGGGAGACAAGTGGACTATCATCAGTGGTGTG
GCCATCTCCCCTGGCATGGAACAAGTAGTTCTATGTGACTCTTGGGGATGCTGCTTCTCCCAGGATC
AGGGAGGCTTAGATGACGGTTCTATGGAGAAGTCCCCTGAAGCCAGCCCTTCTGGCCCTCTACTCAAGA
GCCTCCATGTGGTGGTATCTCTGCTGCCCAGGAGGATATTTCCAGCAATGGTCAGAGTGCCAACTTT
GATAAGAGTCGTCTTGGAAACAGACCTGTAAAACCTAGCATCTGGATCCGTTCTCAGATATATGACCAGA
CACTTGAGACCGAGAAAGTTGCATCTGATCACACATATTATAACTGGAAATTAGAGCCACTTGGTAAAAA
TAAGCCTCGATCAAAGATTTCCAACAAGATCAAGCAAGCAAGCTAGCTAAGACTAGTACTCAACAGA
GGGAAGTGCATCTGAATGAAGTCCCTCAGCCAGCCTCAGGGGAAGGAATAATAAAAAGTCCCAAGAA
GCCAAGCTCAGCCATCATGGCAGGCACAGATAGGTCCACCCCACTGTTCTCCTGACACTCTGAG
CAAGATCCGGCAAGAAGTGGGGCCACACTGCCTCCCTTGTCCCCCACTAATAGCCACGCTCCAAGG
TCATCACAGACTGTCTCCTCTGGTACAAAACCTGGTCCGTCCTCAAGGTCCTCACCTGCTGGCCATG
TTTCCCCCTGTGTGAAGTTCCAGGGCCTCCTGTGTTGTCTCCATGGCCTGAGGAACTCCAGCAGGCCTC
CCCTCTGGATCCCTCTCCGTCCCATCCACAGCAGCAGCTAGTGGAAAGGATAGTGTCTCTCCGTTGCGA
TTCTGTGCTGCTACACCAAAGCATGCACCTCTGTGCCTGGCCGACTCCCATCTGCGCACCAAGGCCATG

CTGCTGTGAGCGGGCCGACGAGAGAATTCTGTAAAAATCCTTGACACCATGTACCCAGAGTTATCTGC
CAGAGCCCGGACCTCAGCCTCCTCAAAGGGAACATGCAGCTCTCCCGAGGCTCCACTGTGGATGGAAAG
GTGTTACCAGGGCGGGTCACTGCTCTCCTAGGACTCAAAGCTATAACCTCAACATCAACTGCATTGTCC
TAACGGGGGGCAGCTCTGGTGTGACGGTAGCCAAGGTAAGTCACAAGACTCGGGTGTCCAGCAGGATGC
AGGTGGGAAAAGAACAAGTACAGTATCCATGCTGAGGAGTGTAAAAGACTGCGCCTGGACAACAAGTCC
CCAGAACCAGACACCAGGAGGTCAGTGGGAAGGAGTCCCGAGGACCCCAAGGAGGAAGCCCACTGG
CTGAAGTCGTGCCAGCTGAGGAAGAGCAAGCTGATGTCCAGCTGCAGTGCAGTTCCTTCTGCGTGT
AAACCCAAGGGAGATGGCAGAGTCATATAACATAGCCATAACTCGGGCTCTGAGGAAGATTGCCGAGTCC
TCCTTCGACCTGCTACCTGTCATTTCGTAGTCATGTGTATGTGGGAAATATCTCCAAAAAGCCTGTATGA
GAGATCAAGAGAAAAGAAGTTGTTTATGAATTTAGCACAACAAACAAGCATTTAGGAGAATACTTACTTTCG
CTCTATTCTCTCAGAGCTAAAGATTGAGAAGACGCTCTCTGGACCACAGTTACATCCATGCAGTGTGCAGA
GTGTATGTGGGCATTTGTCGGCAACTTGGAGACTTGGAAAGAGCTCGCTTGTCTGTTACAGCCTTCTGA
AGGAAGATTTTCCAGAATCTGAGAAGTTGACTCTGTTTATTGCCAACATGTGGCGTGAAGTATTTCTCTC
CCAGTCAGCCATTAGTGAAGCGATGCAGCTGGTTGCCAGGCAGCGTGCCAGAGGAGAAGTTCTGAAGTGC
TTGAGAGCTTTCTGAGCTGGGAAAAGAATGCTCCTATAGATGTTGGAATCGTAGTTTCTAAGCTGCTTT
TGACCATACAGCTGTGCCGAAAACAGAATTTAGTCAAGTGAGGAGTTTGGCGAAGACCTAAGTGCAAA
CATATGGGAATACATATTTGCCATTGATCTCCTCTGCTGCCACCAGAGGTGGATCTGGACGCATGACAAC
ATCATAAGTAAGGAGCTGTGGCCTGTGATGGATAAGTGGATCAAATACAGAAAAGGACATTCAAACATCG
CGTACACCCCTGATGTCATTGTCGCGTCTGTGCTGAGACTGATTGGTCGATTAGGCCAGTTGGGTTTGAA
GGAGGGGTTTTCCAAGTCTGTGAAGAATATCAGCTCGGTTATTGGTATGTTTACATAACATGCTCAGGAT
GAAGATATCCCATGGGGTGTACAGCTTGCAGCTGTGTATGCCCTTGTGACTTGAGTCTAGCAATCCAG
CAGAGATATCCAAGATTCTAGAAGCTTGGCGAACACAACTTCCAACGCTATTCCATCCGCCATTGTCCA
CTGTTTGAAGAGGTTGGCTCTCTGAGTGTGATGGCTCGGCTGGCTGTACAAGCAAAGGAGACTCTGCA
CC

ACGCGTACGCGGGCGCTCGAGCAGAACTCATCTCAGAAGAGGATCTGGCAGCAATGATATCCTGGATT
ACAAGGATGACGACGATAAGGTTTAA

Protein Sequence: >MR213818 representing NM_144837
 Red=Cloning site Green=Tags(s)

MMPGETHPAAPGPADLARCQGCASLQQNLNEYVEALIALKQKIINTDNLLTEYQKKCDELQFARRENSTL
 HHQVEQMLQKISPLQKCQEELGSLKAELEEKSSSLKLYQDTHQEYARVKEECLRTDAQKKLEAKVKKLE
 EAAVKQTQDFKQLRNEKKILEKEFKKTQERLDEF SKQKNEKELRHIGTQISSDSHGSIDKRKVKVLLKEL
 WLCVNTAHLRSGEGGRRRIPEKPAKGSSAARASEQDELLPVQGGPARAADMRSFFSKLSMEMEGDFSSES
 AEEELPSGASPSTEHAFCEERHSEVSGQRPDDGNRTNVYDHEHFFDDDLQAAIDFKLPPPLLSPVPSPP
 PMASGSLPSSLAPESFFGEFTDSSSDSVPPRDSMESALEDYTAESRAYFDLLEKIKRSDQYVKKPGSLE
 ATQAVNSLTPLGFVTGRTALGEPASAAASLAQGRHWTESSEFVRDRGDSVEEAERMVEAREVDKSVQVGGK
 LLKHNRKLLWEMASRGPARKKEAGAGESEICFSSSLGKRTFSELIESEGKTLSSKALCPSQSEFSKRTLTD
 GSASKSPCVTGSGRFQRRERDRESTPQSGICAAAAGRHSARLPSSSSATSVPVSVCSNHQTPWPGCVS
 VGTPEAGTCTEQKSPTRTLNTFLLRSEPTACFPKENDPENSLSTLSPKSKLGTSTFSDWKSRLGLESFSTL
 KSTAKGHSLPQSVFPKPTGGGQCKGRGPGATLILPKSDWTSARSQAGFTRRSSGSADSTSWHRSDVLR
 GSGGSPRASSEYQQRTRLQLEKATPASQNSSLTAMHGPGESTIPPE SNAAAAALLPNQVSVITKQARPRR
 VLGSSLEPWQPHGNTLSPA VNGKETGLMPSVSACVGDGDP IAQVPEQIADKETPSPEVSVSWRNPICDS
 PSDSLLAENFSCSTDRKLPFSSEDNIFQCAMNEHLQKPKTKSPQTTQSGASRLAAGELLPSGVTSGVFP
 EQVPHGPHHQADTEAPVVARESHSAPQNASAPPVPSRGLRARVPTVPVCPSSL SRAEEETQGTQSSSL
 PGASYCYTGIRERGEEDTEVEDEAVSCSEGEHEAEAVMGRRQEQEAEDSHRPLGDPEAGVGEAGHPSDVG
 DLTSALEECNLSTLLYIDKLTSEVVMVLESCQLGDYSSRVSASECASKGSLSEEMNTELRQSEISRKKC
 GKRLWEEKLLRASEWAESEGGDDSCGRTSCQHAQCPLVPSDVLTKTGEELDTNPVDCGGTDEHALLES
 THHSQAAEDLTEDALPEETSSPMPHTAELPDPSAVDGGGSPLSSRSDPEHIQSSYEDEPNSGECLSIGE
 EGLAEPGELLTSSDSSTPRLEQSSDCVAETA FRYQISAVTSEVISVLINKDQDLVIEKGDNWTIISGV
 AISPMEQVVLCDTLGDAASSQDQGLDDGSMEK SPEASPSGPLPQEPCCGDL SGAQEDISSNGQSANF
 DKSRRLRNPVKPSIWIRSQIYDQTELETKVASDHTYNNWKEPLGKNKPRSKI SNKDQASKLAKTLVLNR
 GEVHLNEVPQPASGEGTNIKLP RSQAQPI MAGTDRSTPTNCSPDTLSKIRQEVGPPLPPLLPLIATPPR
 SSQTLSPVPNSGSSRSPAGHVSP LCEVPGPPVLS PWPEELQQASPLDPSPSPSTAAASGRIVSSPLQ
 FCAATPKHALPVPGRLPSCAPGHA AVSGPQQENSVKILDTMYPELSARARTLSLLKGNMQLSRGSTVDGK
 VLPGRVSALLGLKAITSTSTAFVLTGGSSGADGSQGSQDSGVQQDAGGKRTLAVSMLRSKRLRLDNKS
 PEPDTREVTGEGVPEDPQGGSP LAEVVPAEEEQADVPVCSAASLLRVNPREMAESYNIAITRALRKIAES
 SFDLLPVIRSHVYVGNISKKPVMRDQEKEVVEYEFSTTNKHLGEYLLRSILSELKIQKTSLDHSYIHALCR
 VYVGICRQLGDLERARLFCYSLKEDFPESEKLT LFIANMWREVFLSQSAISEAMQLVARQRARGEVLNC
 LRAFLSWEKNAPIDVGI VVSKLLLT IQLCPKTEFQSSEEFGEDLSANIWEYIFAIDLLCCHQRWIWTHDN
 IISKELWPVMDKWKIYRKGHSNIA YTPDIVASVLR LIGRLGQLGLKEGFPTAVKNISSVIGMFIQHAQD
 EDIPWGVQLAAVYALCDLSPSNPAEISKILEAWRTQTSNAIPSAIVHCLEEVGSLSADGSAGCTSKGDSA
 P

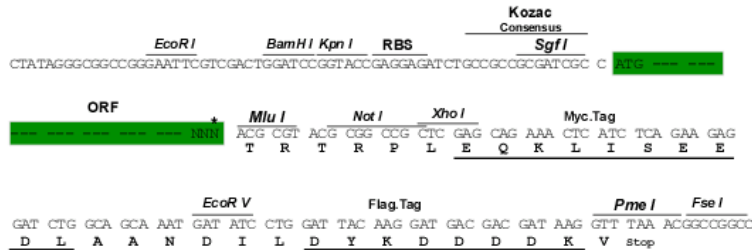
TRTRPLEQKLISEEDLAANDILDYKDDDDKV

Chromatograms: https://cdn.origene.com/chromatograms/mm9106_e09.zip

Restriction Sites: SgfI-MluI

Cloning Scheme:

Cloning sites used for ORF Shutting:


ACCN: NM_144837

ORF Size: 6723 bp

OTI Disclaimer: The molecular sequence of this clone aligns with the gene accession number as a point of reference only. However, individual transcript sequences of the same gene can differ through naturally occurring variations (e.g. polymorphisms), each with its own valid existence. This clone is substantially in agreement with the reference, but a complete review of all prevailing variants is recommended prior to use. [More info](#)

OTI Annotation: This clone was engineered to express the complete ORF with an expression tag. Expression varies depending on the nature of the gene.

Components: The ORF clone is ion-exchange column purified and shipped in a 2D barcoded Matrix tube containing 10ug of transfection-ready, dried plasmid DNA (reconstitute with 100 ul of water).

Reconstitution Method:

1. Centrifuge at 5,000xg for 5min.
2. Carefully open the tube and add 100ul of sterile water to dissolve the DNA.
3. Close the tube and incubate for 10 minutes at room temperature.
4. Briefly vortex the tube and then do a quick spin (less than 5000xg) to concentrate the liquid at the bottom.
5. Store the suspended plasmid at -20°C. The DNA is stable for at least one year from date of shipping when stored at -20°C.

RefSeq: [NM_144837.3](#), [NP_659086.2](#)
RefSeq Size: 7675 bp

RefSeq ORF: 6726 bp

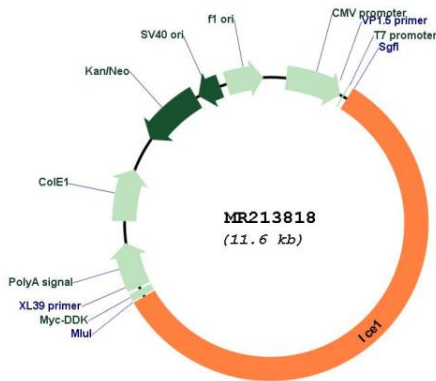
Locus ID: 218333

UniProt ID: [E9Q286](#)
Cytogenetics: 13 C1

MW: 242.3 kDa

Gene Summary: Component of the little elongation complex (LEC), a complex required to regulate small nuclear RNA (snRNA) gene transcription by RNA polymerase II and III. Specifically acts as a scaffold protein that promotes the LEC complex formation and recruitment and RNA polymerase II occupancy at snRNA genes in subnuclear bodies (By similarity). [UniProtKB/Swiss-Prot Function]

Product images:



Circular map for MR213818