

Product datasheet for **MR213809**

1700061G19Rik (NM_030141) Mouse Tagged ORF Clone

Product data:

Product Type:	Expression Plasmids
Product Name:	1700061G19Rik (NM_030141) Mouse Tagged ORF Clone
Tag:	Myc-DDK
Symbol:	1700061G19Rik
Synonyms:	1700026H02; AI507598
Mammalian Cell Selection:	Neomycin
Vector:	pCMV6-Entry (PS100001)
E. coli Selection:	Kanamycin (25 ug/mL)



[View online »](#)

ORF Nucleotide
Sequence:

>MR213809 ORF sequence
Red=Cloning site Blue=ORF Green=Tags(s)

TTTTGTAATACGACTCACTATAGGGCGGCCGGGAATTCGTCGACTGGATCCGGTACCGAGGAGATCTGCC
GCCGCGATCGCC

ATGACTGACCCTAAGGAATCAGATAACCTTCAGACCTCCAGGAGGATCCCTGAAAACCAAACCATCTTGA
AGAACAAAATTCACAGTCAATATCGAAGAAGGCACAAGCAGATAAATTTGAGATACTGACCCAGGTTCC
CAGCTACTGGACATCTAAGCGAGAAGGCCAGGTGCAGCTGCGCATGGGCAAGGACCCACTAGATAACGAG
CCTCCGGTCACAGTTCGCCGACTTGATCATGAGCGCGGCCACTAAGTACTCACACTACCTGGCGATCGGTT
CCAAGTACAAGAAAAGCTGGCAACTGCTCACCTACATCGAGTACTACGAGGCCTGCCGGCTGCTGCCAA
GGCCTTCCTCAAGGTGGTCTGGAACGCTTTCATGGTGTGGGTATCATGGGCATCAATTCCTCGGAGTGG
GTGATTGCCAGCATTGGAGCTATCATGGCAGGTGGCATCTCTGTGGGCATCTTGAGCAGCATCTCCCCCA
AAGCCTGCCAAGTCATCGCTGAGACCTCAGAAATGGATATCTTTGTGGTGGATAATGACAGACAGCTGCA
AAAGATTAACAGATCCAGGGCTACTTGAAGCATCTCAAGGCCATCATAACAGTACAGAGAAGATATCCAG
GAAGCGCAGCCAAATCTATACTCGTGGAAAGGCTTCTGGACCTCGCGGATGGCATCTCGGATGAAAAAC
TGGACAAAATCATCGACACACTGAAGCCCAATCAGTGTGTGCTTTGGTATATAACCAAGGTACACAGG
GCCCTCGAAGGCCATAATGCTGAGCCATGACAACATCACATGGACCACAGCAGCCATCGTTCAAAGCCTT
GGGTTCAAGTGTCCACCTCAGGGTCAGGAGATCCCTCGTAGCTACCTGCCACTTTGCTTCCCTGGAATAC
AGATCTTGGACGTTTGGGTGGCCATTTCCGTGGCTGGGACAGTCTATTTCCCTCGCTAGACTCAGGGAA
GTGGAGTGGGCTGCCACGAACCCCTGGCACGGGCTTCTGATGGAGCTGCTCCGCGAGGTCCAGCCCACC
ACGTTCTCGCGCATTCCGTGGGTGTGGGACCGCATGCTGGACAGTCTGAAGACCAAATTCCTGGACTCCA
CCGCTTCCGCGAGGATCGACCATGGGCCATGGCATGGGCCCTCCACACCAACAAGAAGCTGATGAT
GGGGGAGATCCACCAGCCGCTGTGCTTCCGCTGGCCAAGAGATTGACCTTCGAGCGCGCCAGGAAGTTC
CTGGGTCTCAACCATTGCCAGCAGTTTCTAAACATGGGCATGGGCTGCCGAGTGGCAGCTGGATTTCT
TCCTCAGCGTAAACATCCCTATCATGGAGTTGTACGGCTTGTCCGAGTGCACGGGACTACACACAGTGT
CAACCTGCAGGCTTACCGGATACTGAGCGCTGGGAAAGCGCTTCCAAAACCCACACAAAGGTGGAAAA
GAAAACAAGGATGGGATCGGGAACCTTGTGTATCTGGGGCCGCACATATTCATGGGGTACCTCAGAGACA
AGCAGAGCACAGAGAGGAAGGTGGACACCCACGGCTGGCTACACACGAACGACTTGGGCTTCTTGGATTT
TGACAAGTTCCTCTATGTCATGGGGAACAATAACGATTTGATCAAGCTGAGCTCGGGGAAATGGTCAAC
CCGTATCCATCGAGGAGCGGTAAAGACGCGAATCCCATCGTCCGCTATGCCATGCTGGTGGGCCAGG
ACGCCCGTACCTGTGCGCCCTCCTCACATTGAAGTGTGAGATAATCCAGAGACTGGAGAGGCTCGGAG
TAACCTGACCAGTGAAGTGTGCTGCGGAAAGCTTCAAGCCAGTGCACCTGGTTGTGACAGCTC
CTATATGACCGTGACCCTTTGGTACGGAGTTCATTAACCAAGGCATCGAGGATGTGAATTCGGAGGCGC
CCACAATGGGTGCCAAGATCATTAAAGTGGGTATTCTAGACAACGATTTCTGTGGATGGTGGGGAGCT
TGGACCCATGAGCAAGATGAACAGGTCCATTGTGGTCAAGATATACCAAGAGGAAATCCAGAACTCTAT
GAGACTTCGACCTCC

ACGCGTACGCGGCCGCTCGAGCAGAACTCATCTCAGAAGAGGATCTGGCAGCAAATGATATCCTGGATT
ACAAGGATGACGACGATAAGGTTTAA

Protein Sequence: >MR213809 protein sequence
 Red=Cloning site Green=Tags(s)

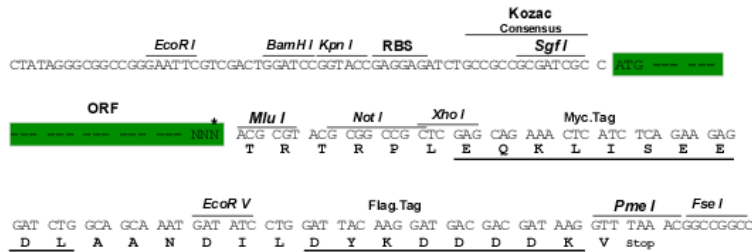
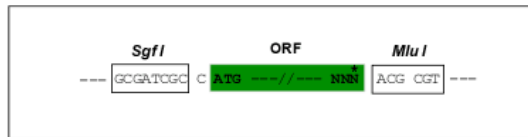
MTDPKESDNLQTSRRILKTKTILKNKIHS AISKKAQADNFEILTPGSSYWT SKREGQVQLRMGK DPLDNE
 PPVTV PDLIMSAATKYSHYLAIGSKYKKS WQLLTYIEYYEACRRAAKAFLKVGLERFHG VGMINSSEW
 VIASIGAIMAGGISVGILSSISPKACQVIAETSEMDIFVVDNDRQLQKINQIQGYL KHLKAIQYREDIQ
 EAQPNLYSWKGF LLDLADGISDEKLDKIIDLKPNQCCALVYNQGTTPSKAIML SHDNITWTTAAIVQSL
 GFKCPPQGEILVSYLPLCFPGIQILDVWVAISVAGTVYFPSLDSGKWSGLPRTPGTGFLMELLREVQPT
 TFCGIPWVWDRMLDSLTKFLDSTAFRRRIDHWAMRMGLHTNKKLMMGEIHQPLCFGLAKRLTFERARKF
 LGLNHCQQFLNMGMLPSGTLDFFLSVNIPIMELYGLSECTGLHTVSNLQAYRILSAGKALPKTHTKVEK
 ENKDGIGNLCIWGRHIFMGYLRDKQSTERKVDTHGWLHTNDLGFDFDKFLYVMGNNDL IKLSSGEMVN
 PYP IEEVRTRIPVRYAMLVGQDAPYLCALLTKCQINPETGEARSNL TSEVVACCRKLR SQSTWLS DV
 LYDRDPLVTEFINQGI EDVNSEAPTMGAKIIKWILDNDFSV DGGELGPM SKMNR SIVVKIYQEEIQKLY
 ETSTS

TRTRPLEQKLI SEEDLAANDILDYKDDDDKV

Restriction Sites: SgfI-MluI

Cloning Scheme:

Cloning sites used for ORF Shuttling:



* The last codon before the Stop codon of the ORF

ACCN: NM_030141

ORF Size: 2118 bp

OTI Disclaimer: The molecular sequence of this clone aligns with the gene accession number as a point of reference only. However, individual transcript sequences of the same gene can differ through naturally occurring variations (e.g. polymorphisms), each with its own valid existence. This clone is substantially in agreement with the reference, but a complete review of all prevailing variants is recommended prior to use. [More info](#)

OTI Annotation: This clone was engineered to express the complete ORF with an expression tag. Expression varies depending on the nature of the gene.

Components: The ORF clone is ion-exchange column purified and shipped in a 2D barcoded Matrix tube containing 10ug of transfection-ready, dried plasmid DNA (reconstitute with 100 ul of water).

- Reconstitution Method:**
1. Centrifuge at 5,000xg for 5min.
 2. Carefully open the tube and add 100ul of sterile water to dissolve the DNA.
 3. Close the tube and incubate for 10 minutes at room temperature.
 4. Briefly vortex the tube and then do a quick spin (less than 5000xg) to concentrate the liquid at the bottom.
 5. Store the suspended plasmid at -20°C. The DNA is stable for at least one year from date of shipping when stored at -20°C.

RefSeq: NM_030141.2

RefSeq Size: 2455 bp

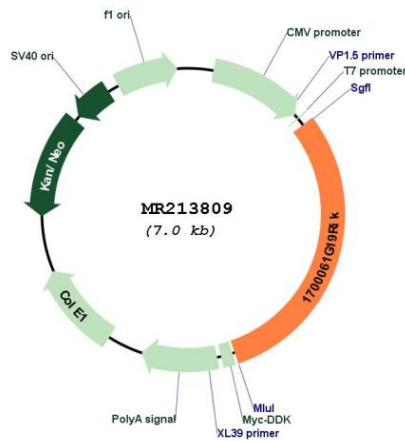
RefSeq ORF: 2118 bp

Locus ID: 78625

Cytogenetics: 17 D

MW: 79.3 kDa

Product images:



Circular map for MR213809