

Product datasheet for **MR213793**

Slco6d1 (NM_027584) Mouse Tagged ORF Clone

Product data:

Product Type:	Expression Plasmids
Product Name:	Slco6d1 (NM_027584) Mouse Tagged ORF Clone
Tag:	Myc-DDK
Symbol:	Slco6d1
Synonyms:	4921511I05Rik
Mammalian Cell Selection:	Neomycin
Vector:	pCMV6-Entry (PS100001)
E. coli Selection:	Kanamycin (25 ug/mL)



[View online »](#)

ORF Nucleotide
Sequence:

>MR213793 representing NM_027584
Red=Cloning site Blue=ORF Green=Tags(s)

TTTTGTAATACGACTCACTATAGGGCGGCCGGGAATTCGTGACTGGATCCGGTACCGAGGAGATCTGCC
GCC**CGGATCGCC**

ATGGCCCAGGACAAGATAAAACAAAAGATGCAGTGAAGCAGGCTCAGGTGGTAGACATGGATGAACACC
AGAAAAC TAAGGAACCCAGGAAATTAGAAATGTTCTGGTAACACTTCCAAC TGCAGTGAAGAAGTTTGC
AGATACACCAGATATGAAAAAGTCAGATCGAAAA TACAAAGATCCCTCGGAGGAGCCATATGTTTTGGC
TCTCTCGTTTTCCCTTGTTACAGCGTTTCAACAATGTTAAGTCCTTCTGACTCTGTCTTTTTAGCGG
TCGTGGCTCATAGTATGATATTTGCTCTTGTGATCAGTCTATAAACTTTACGTGGCTCAACTATCTCC
ATCACGGATAGAGGAATACTTAATGGATACTAGTGATAATTTGTTGCTTTTCTGTTCTCAATGTTTGA
GCACACTTTGGAGGTAGAGGAAATAGAGCAAATGGGTGCAGCTGGCTGCTTTCTAACAGGAATTGCTG
CAATTGTTTTGCTGTTCTTTCTTAATTTTGAATTAATAAACTGAGCGTAGTAAAAGAAGAGTTGTG
CGAGGAAGGAAAATTACCTAAAGTTTGTGAACCAACGGATTGCCACACAAATCAATTTGTATCTTTATC
TTCATCTTCGGGAGTGTCTCCATGGAATAGCAGGCTTGCCATTGTATATACTTGCCACAAGCTTTATTT
TTGACCACGTTCCCAAACTCATCTGGATTATATATAGCTCTTGTAGATGCTGCACTAGGGTTGGATA
CTGTCTGGGTTTTATAGGAGGAATGCTAAATTTAAGATGTCTGCGCAAGAAGTTATGCAAGCAGTTGGA
CATCGTCAGAGGATTCGAATACTGCAGCGTGGTTGGTGGAGAAGCTTTTATATTTGTTGCTGATTTGCAT
TTTGTACAACCTTACCCTGTTGGGTTTTCCCTCTAGTTTACCTGGTGCACGCCAGATAAGACTTGAGAA
AAGTCAGGAACCTCTACCTTTGACAGGAGACTTAAAAAAGGAAATTAAGAATAATTTGAAGAGTGT
CTTCATGCTACTTGGTGTCTAATAAGGAACCCACTGGTGTGTCCAAGTAGTATGCAAATTCACAGAGT
TTACAACTTTTAAGTCATCTGCAGTTTTTTGCCCCAATATTTACAACTCGGTTTTTAATAAGACCATC
AAGTGCCTCTATGCTCACAGGTGTTTTTATATTACCGGGAAGTATATTTGGCCACTTTTTTGGAGGCTTT
ATTGTTACAGAAATGCAAATGAATAATAAGAACAAATGAAATTTTATAGTAGCATCTTTTGTGTCAA
TTGTGCTTTTCTATTAACCTTTTTTGTGGAGTGTGAAATATCAAAGTTTGTGGAATCAATGATGATTA
TGATAGGCTTGGTATAATTGAAACCTCACAGCTCCATGCAATGTGCCCTGTGGTTGTACAACCTTCTGAA
TATAATCCTGTATGTGGAAGAGATGAGACACAATATTTCTCTCCCTGCTTGCAGGTTGCAAAGCTACTA
AAAAGCTAAGGAAGGAAAAGACATACTACAATGTTCTTGCATCAAAGAAGGATTGACAACCTGCTGATAA
TGAAGTCAATATATTGATGCTGTTTCTGGAACATGTAATACCAGATGCCTTACATTGCCTTTATTTTTT
GCCTTTTACTTTACTGCAACCTTTTTGTCTAGTTTCTGTAGTATACCTTCCGCCTTGATTGTCATTCAA
GTGTACCTACCAGTTGGAATCAATGAGTTTGGGTTAATGTGCGACAGTTTGGAGATCACTGGCTCTGT
TCTGCACCAATATTATTTGCAGCAACATCAGATTTTACTTGTCAATTCTGGGGTATTAATGAATGTGGA
GAAAAAGTACGGTGTGGATCTATAATACAGAAAATTTGGTCTACACATTTAAGACAGTATGGATTAACA
TGCAAATATTGTGAGGCTTGAGTTGTCTTTACGGGTTTACAGACATGATTATGTGGTAAAAGGAGATGG
TAAAAAAGCAGAAGAAAAG

ACGCGTACGCGGCCGCTCGAGCAGAACTCATCTCAGAAGAGGATCTGGCAGCAAATGATATCTGGATT
ACAAGGATGACGACGATAAGGTTTAA

Protein Sequence: >MR213793 representing NM_027584
Red=Cloning site Green=Tags(s)

```

MAQDKIKQKDAVKQAQVVDMEHQKTKPRKLEMFLVTLPTAVKKFADTPDMKKS DRKYKDPSEEPYGLG
SLVFPCLQRFNNVKSFLTL SFLAVVAHSMIFALVDQSIKLYVAQLSPSRIEEYLM DTSDFVAFLFSMFV
AHFGGRGNRANWVAAGCFLT GIAAIVFAVPFLNFEI IKLSVVKEELCEEGLPKVCEPTVLP HKSICIFI
FIFGQCLHGIAGLPLYILAT SFIFDHPVTNSSGLYIALVDAALGVGYCLGFI GGMLNFKMSAQEVMQAVG
HRQRIRILQRGWWRTFIFVAVFAFCTTLLPLLGFPSLPGARQIRLEKSQEPTFD RRLKNKEIKNNLKS
LHATWCLIRNPLVLSQVVCKFTEFTTFFKSSAVFLPQYLQTRFLIRPSSASMLTG VFILPGSIFGHFFGGF
IVHRMQMNNKLNKFLVVASFVSI VLFLLTFFVECEISKFAGINDDYDRLGIIGNL TAPCNVPCGCTTSE
YNPVCGRDETQYFSPCFAGKATK KLRKEKTYNCSCIKEGLTTADNEGQYIDAVSGT CNTRCLTLPLFF
AFYFTATFLSSFCSIP SALIVIQSVPTS WNSMSLGLMSTVWRFTGSPAPILFAATSDFTCQFWGINECC
EKVRCWIYNTENLVYTFKTVWINMQILSGLSCLYGVYRHDYVVKGDGKKAEEK
    
```

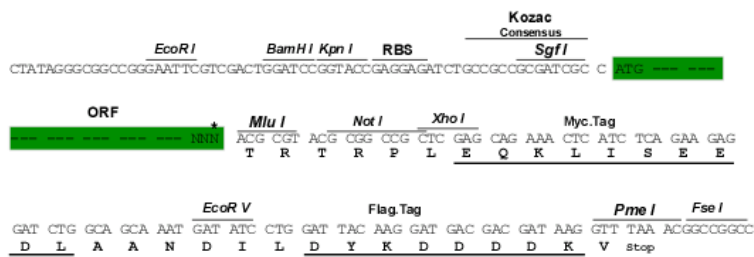
TRTRPLEQKLISEEDLAANDILDYKDDDDKV

Chromatograms: https://cdn.origene.com/chromatograms/mm9090_d11.zip

Restriction Sites: SgfI-MluI

Cloning Scheme:

Cloning sites used for ORF Shuttling:



* The last codon before the Stop codon of the ORF

ACCN: NM_027584

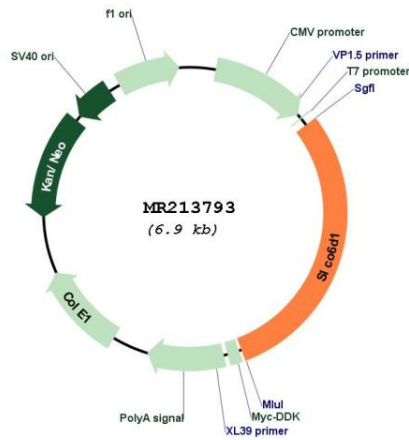
ORF Size: 2049 bp

OTI Disclaimer: The molecular sequence of this clone aligns with the gene accession number as a point of reference only. However, individual transcript sequences of the same gene can differ through naturally occurring variations (e.g. polymorphisms), each with its own valid existence. This clone is substantially in agreement with the reference, but a complete review of all prevailing variants is recommended prior to use. [More info](#)

OTI Annotation: This clone was engineered to express the complete ORF with an expression tag. Expression varies depending on the nature of the gene.

Components:	The ORF clone is ion-exchange column purified and shipped in a 2D barcoded Matrix tube containing 10ug of transfection-ready, dried plasmid DNA (reconstitute with 100 ul of water).
Reconstitution Method:	<ol style="list-style-type: none"> 1. Centrifuge at 5,000xg for 5min. 2. Carefully open the tube and add 100ul of sterile water to dissolve the DNA. 3. Close the tube and incubate for 10 minutes at room temperature. 4. Briefly vortex the tube and then do a quick spin (less than 5000xg) to concentrate the liquid at the bottom. 5. Store the suspended plasmid at -20°C. The DNA is stable for at least one year from date of shipping when stored at -20°C.
RefSeq:	<u>NM_027584.1, NP_081860.1</u>
RefSeq Size:	2328 bp
RefSeq ORF:	2052 bp
Locus ID:	70866
Cytogenetics:	1 D
MW:	76.7 kDa

Product images:



Circular map for MR213793