

Product datasheet for MR213776

1700030J22Rik (NM_027103) Mouse Tagged ORF Clone

Product data:

Product Type: Expression Plasmids
 Product Name: 1700030J22Rik (NM_027103) Mouse Tagged ORF Clone
 Tag: Myc-DDK
 Symbol: 1700030J22Rik
 Mammalian Cell Selection: Neomycin
 Vector: pCMV6-Entry (PS100001)
 E. coli Selection: Kanamycin (25 ug/mL)
 ORF Nucleotide Sequence: >MR213776 representing NM_027103
 Red=Cloning site Blue=ORF Green=Tags(s)

TTTTGTAATACGACTCACTATAGGGCGGCCGGAATTCGTCGACTGGATCCGGTACCGAGGAGATCTGCC
 GCCCGATCGCC

ATGGATGTCTGTGAGGAAAGCGAGACTTTTTTAGAAAATACAGAAAATCAGAAAATTGAAGCTACGGAAG
 AGACGGCACCAACTTTACATTGTCCGGACGAGAAAAGTAAAAGGAGTCATGTCTGCTGCCTTCTGGTGT
 CAGCGACCTCACACTGGAAGAGGATGGGAGGGCCAGCGAGTGTCCATCAGCACCAGGTTGGGAGGAAGCT
 GTCCATGGCTGGGAAGGACCTACCAACTGCCTGCATCTGGTCAAAGAAGAAAAGTAAAAGGGGAGGG
 CCAGAAAGGCACCAATGGTGGCAACGACTGCTTGTCTGTATGAGTCTTCCCAAGGGAGCTGGAGCC
 CCGGTCCCTCTTGAGGTTGGGAAACTGGAGGCGGGTGTGAGGCCGAGGTGAGCACCCAGAAGAGCTGG
 AGCTCTGAGAAGAACTGGAGCGGCTCTCCAGGGCCCCGGCACTGCTTCCAGAGAGCAGTCTAACAAC
 TCTGCATCCCACCGACGTGCATGGAGAAAAAAGCCTGCAACTCAAGGAGTTTATCTGGTGCATGGA
 GGAGTGGCCTATGCCGAGACAGTTAGCAGCAAGGCCGGCAGGAACCCAGCGGAAGCCCCGAGCAAGGG
 CTCTCCACCCCTGACTCCCTGCAGCCAAGGCTTTGTGGTTCTTCCCCGCTGAAAAGCTCTCCCCACA
 ACTTGGACGTCTGAGTAAGAAAAGCAGGAATATTTCTGGCAGCCGGAAGAAAAGGTGCTGAGGGTGA
 AAAAGACGATTGTATGGCTTGTGCAGATGGACTGAAAGGAGTAGACGGGAAAAGGTAAAAGACACTTT
 GAGCTGGCCAGCCACGTGAAGGTCACCAACGACTGCCTTCCCACCCACTGCGGCCAGACCCACCTGC
 TGTGAGCCGAGTCCCAAAGGTGCTGCCTGCACTGGTCCCTCCTGCCCCAGAAAAGCACTGTGTTCCACC
 TAACCCAGCGACATCCACTACCTTGCCACCCTGCAGTTTTGGGGCAACAGGAAAGCAAGCTGCAGA
 ACTAGGCTCAAAACCAAGGACACAAAACCTCCCAGGACCACTGCCAAGCATATTATCACAGAGGCCAAGC
 AGCAAAACAGGCCCCACGTGCTAGAAAGCAAAGTCTTCCCTAAACCTCTCTTGCCATCCCTCACAGTGAG
 CAGAGTTGTCATCCCGTCTCCACCCACAGAGTACTC

ACGCGTACGCGGGCGCTCGAGCAGAAAACCTCATCTCAGAAGAGGATCTGGCAGCAATGATATCCTGGATT
 ACAAGGATGACGACGATAAGGTTTAA



[View online »](#)

Protein Sequence: >MR213776 representing NM_027103
 Red=Cloning site Green=Tags(s)

MDVCEESETFLENTENQKIEATEETAPT LHCPDEKSESRSHVCCLLGVSDLTLEEDGRASECAISTGWEEA
 VHGWGRTSPTACIWSKKKVKRGRAREGTNGGNDCLFCMSLSQGSLEPRSLLEVGKLEAGAEAEVSTQKSW
 SSEKNWSGLSQGPGTASREQSNKLCIPTDVHGEKKSLLQKEFIWCMEWPMPETVSSKAGRNPSSGSPEQ
 LSTPDSLAAKALVVLPLPKSSPHNLDVLSKSRNIFWQPEEKVLRVEKDCCMACADGLKGVGDGKGEKRHF
 ELASHVKVTNVLFPPTAAQTHLLSAESQRCLHWSLLPQKSTVFPPNPSDIHYLATLQVLGQQGKQSCR
 TRLKTKDTPRRTAKHIITEAQQRPHVLESKVFPKPLLSLTVSRVVIIPVSTHRVL

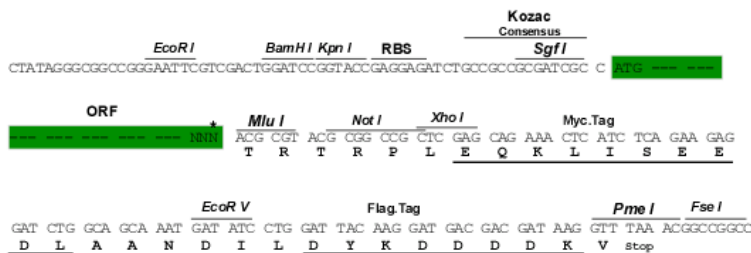
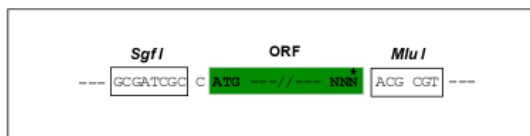
TRTRPLEQKLISEEDLAANDILDYKDDDDKV

Chromatograms: https://cdn.origene.com/chromatograms/mm9060_c11.zip

Restriction Sites: SgfI-MluI

Cloning Scheme:

Cloning sites used for ORF Shuttling:



* The last codon before the Stop codon of the ORF

ACCN: NM_027103

ORF Size: 1227 bp

OTI Disclaimer: The molecular sequence of this clone aligns with the gene accession number as a point of reference only. However, individual transcript sequences of the same gene can differ through naturally occurring variations (e.g. polymorphisms), each with its own valid existence. This clone is substantially in agreement with the reference, but a complete review of all prevailing variants is recommended prior to use. [More info](#)

OTI Annotation: This clone was engineered to express the complete ORF with an expression tag. Expression varies depending on the nature of the gene.

Components: The ORF clone is ion-exchange column purified and shipped in a 2D barcoded Matrix tube containing 10ug of transfection-ready, dried plasmid DNA (reconstitute with 100 ul of water).

Reconstitution Method:

1. Centrifuge at 5,000xg for 5min.
2. Carefully open the tube and add 100ul of sterile water to dissolve the DNA.
3. Close the tube and incubate for 10 minutes at room temperature.
4. Briefly vortex the tube and then do a quick spin (less than 5000xg) to concentrate the liquid at the bottom.
5. Store the suspended plasmid at -20°C. The DNA is stable for at least one year from date of shipping when stored at -20°C.

RefSeq: [NM_027103.3](#)

RefSeq Size: 2971 bp

RefSeq ORF: 1230 bp

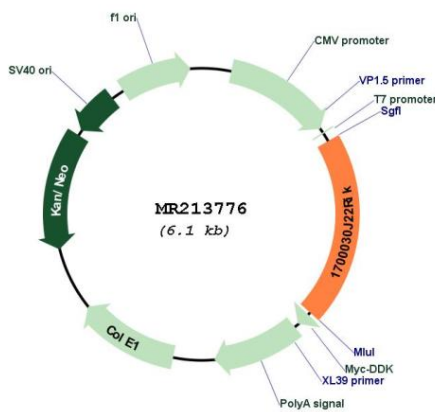
Locus ID: 69528

UniProt ID: [Q8BHB7](#)

Cytogenetics: 8 E1

MW: 45 kDa

Product images:



Circular map for MR213776