

Product datasheet for **MR213755**

Vmn2r108 (NM_001104570) Mouse Tagged ORF Clone

Product data:

Product Type:	Expression Plasmids
Product Name:	Vmn2r108 (NM_001104570) Mouse Tagged ORF Clone
Tag:	Myc-DDK
Symbol:	Vmn2r108
Synonyms:	EG627805
Mammalian Cell Selection:	Neomycin
Vector:	pCMV6-Entry (PS100001)
E. coli Selection:	Kanamycin (25 ug/mL)



[View online »](#)

ORF Nucleotide Sequence:

>MR213755 representing NM_001104570
 Red=Cloning site Blue=ORF Green=Tags(s)

TTTTGTAATACGACTCACTATAGGGCGGCCGGAATTCGTCGACTGGATCCGGTACCGAGGAGATCTGCC
 GCC**CGGATCGCC**

ATGTTCTCTTGATTTTTATCTCCTCACTACTTCTGATTGCCAAATTTGTCCTTACCTTTATGCATGTTA
 ATATCAGTAAATGTTTTACAAAATTACTGAGGATTTTCATCATGAAGGAGATGTGGTGATTGGTGCAAT
 TTTCCCTCTTCATACGTACTATACGAAGAATAAAATCCACATCTTATCTACCATATTATTATAAGGAC
 AATTACCTCCAATATAATTTAAGAACTACCAGTATATTCTGGCTTTGGTGTGGCTATTGAGGAGATCA
 ATGATAATCCCAATCTTTACCTAATATATCTCTGGATTGATTTCTACAATGCAGATTCATTGAGAA
 GGACACTCTTATGAATGTCTGTTTTGGCTCACTGGTCAAGGGCAGAAAAATTTTACCAAATTACAAT
 TGCGGCAAAAGTAATTTGCTACTGCTCTCACAGGAACAGCATGGACAACGTCTGCCAAATTTGGTACAT
 TGCTTCAACTCTTAAATTTCTCAGCTTTCTTTGGACCTTATGATTCCATCTTGAGTGACCGTGGACA
 ATATTCTCTCTATCAGATGGCTCCAAGTACACATCTATTTCACTTGGCATTGTATCTTTGATGGTT
 CATTTTAGGTGGTCTGGGTTGGTCTATCCTTCCAGATAAACCACAAAGGAAATAAAATTTTATCAGAGT
 TCAGAGAAGATATGGAGAGAAAAGGAGTCTGCATAGCTTTTGTGAAAATGATCCCTATGACATGGAAATG
 ATATTATAACAAATCTGGGAAAATATGGATGAGACAAATGTTATAATTATTTATGGTGACATTGATTCT
 CTCACAGGTCTAATGCGAAATATGGGCAAGATTGTTGACAGCAAAAGTCTGGATCATGAACACTGAAC
 CTCATATTACTGACTATGCTGACTATTTTCATGCTTGACTCATTCCATGGTAGCTTAATTTTTACACACAA
 TTATAGAAAGAGTTTTAAGATTTCTAATTTTATCAAACAGTTAATCCTTACAAATACCCGTAAGACATT
 TACCTTCTAAGTTATGGCATTGTCTTCAAATGCTCATTCTTGATGTTGATTGTCGACTTTTGGCTA
 ACTGTCAACCCAATGCTCTCTGGATGTGTTACCTAGTCATATATTGGACATGGTAATTAGTGAAGAAAG
 CAATAATATCTATAATGCTGTGTATGCTGTGGCTCACAGTCTCCATCAGATGCATCTTCAAGAAGTACAA
 AAAAAACCACATGAAAATGGGGAAGCAATAGCCTTCTTCCCTGGCAGCTTAACATTTTCTGAAGGACA
 TCAATGAGAGAGACAATATGAGTTTCGGTGGGAGACAGAAATTAATGCAGAATATGACATTCTTAACCT
 TTGGAATTTACCAAAGGGTCTTGGACAAAAGGTGAAAATAGGATCCTTTTCCAGCAATGCTCCTGAGGGC
 CAACAGTTGTCTTATCTGAACAGATGATACAATGGGCAGAAGGATTCTCAGAGATCCCTCAATCTGTGT
 GCAGTGAGAGTTGTGGGCTGGATTGAGAAAAGTAACCTGGAGGGCAAGGCCATCTGCTGCTACAATTG
 CACTCCCTGTGCAGATAATGAGATTTCTAATGAGACAGATGTGGATCAATGTGTCAAGTGTCCAGAGAGT
 CATTATTCAAATACAGAGAAGAACCCTGTTTACAGAAAAGTGTGATCTTCTGGCCTATGAAGACCCCT
 TGGGGATGACACTGGCCTGTATAGCTTTGTGTTTATCTGCACTCACAGCCTTTGTAAATGGGGTCTTTGT
 GAAATACAGAGACACTCCCATTTGTGAAAGCCAATAATAGAGGTCTCAGTTACACTTTGCTCATCACAATC
 ACCTTCTGTTTACTCTGTTCTTTGAACTTCATTGGTCAACCCAATACAGCCTCCTGCATCCTTACAGAGA
 ACATATTTGGAGTTGCATTCACTGTGGCTCTAGCTACCGTGTGGCCAAAGCTATTAAGTGGTCCCTTGC
 CTTCAAGGCCACTTTCCAGGGAGAATGGTGAGGTGGTTAATGACATCAAGAGCTCCAACTATATAATT
 CCTCTTTGTACGCTGATCCAACTTTTATTTGTGGAATATGGATGACAATGTGCGCTCCATTCATTACCC
 AAGACAATCATGCTGAACATGGACACATCTTACTTTTGTGTAACAAGGGATCATCTGTTGCTTTCCACTG
 TTTCTGGGATACCTATGCTCCTTGGCTTTTGGGGGATACACCATGGCATTCTTATAGAAAATCTGCCT
 GATACATTCAATGAATCCAAATTTCTCTATTCCAGCATGGTGGTGTCTTCTGTGTATGGGTACCTTTTC
 TTCTGTCTACCATAGCACTAAAGGGAAGTGCATGGTGGCTGTGGAAGTCTTCTCTATCTTGGCTTCCAG
 TACAGCCCTCCTTGGCTTCATATTTGCCCTAAGTGTACATTATCTTATTTAGACCAGAGAAGAATTCA
 TTTTCATCGTATCAAGGACAAAACATATTCTAGATGGAATAAAAA

ACGCGTACGCGGCCGCTCGAGCAGAAACTCATCTCAGAAGAGGATCTGGCAGCAATGATATCCTGGATT
 ACAAGGATGACGACGATAAGGTTTAA

Protein Sequence: >MR213755 representing NM_001104570
 Red=Cloning site Green=Tags(s)

MFSCIFISSLLLIAKFVLTFMHVNISKCFYKITEDFHHEGDVVIGAFFPLHTYYTKNKIPHSYLPYYYKD
 NYLQYNFKNYQYILALVFAIEEINDNPILLPNISLGFDFYNVRFIEKDTLMNVCFWLTGGQKNIPLPNYN
 CGKSNFATALTGTAWTTSAQIGTLLQLFKFPQLSFGPYDSILSDRGQYSSLYQMASKYTSISLGI VSLMV
 HFRWSWVGLILPDNHKGNKILSEFREDMERKGVCI AFVKMIPMTWNAYYKFWENMDETNV IIIYGDIDS
 LTGLMRNIGQRLLTAKVWIMNTEPHITDYADYFMLDSFHGSLIFTHNYRKSFKISNFIQTVNPKYPEDI
 YLPKLWHLFFKCSFSDVDCRLLANCPNASLDVLP SHILDMVISEESNNIYNAVYAVAHSLHQMHLQEVQ
 IKPHENGEAIAFFPWQLNIFLKDINERDNMSFGGRQKLNAEYDILNLWNLPKGLGQVKIGSFSANAPEG
 QQLSLSEQMIQWAEGFSEIPQSVCSSECGPGRKVTLEGKAICCYNCTPCADNEISNETDVDQCVKCPES
 HYSNTEKNHCLQKTVIFLAYEDPLGMTLACIALCL SALTAFVIGVFKYRDTPIVKANNRGLSYTLLITI
 TFCLLCSLNFIGQPNTASCILQQNIFGVAFTVALATV LAKAITVVLAFKATFPGRMVRWLMTSRAPNYII
 PLCTLIQLFICGIWMTMSPFFIHQDNHAEHGHILL LCNKGSSVAFHCVLGYLCSLAFGGYMAFLSRNLP
 DTFNESKFLSFSMVVFCVWVTFPLVYHSTKGGKVMVA VEVFSILASSTALLGFIFAPKCYIILFRPEKNS
 FHR IKDKTYSRWNKI

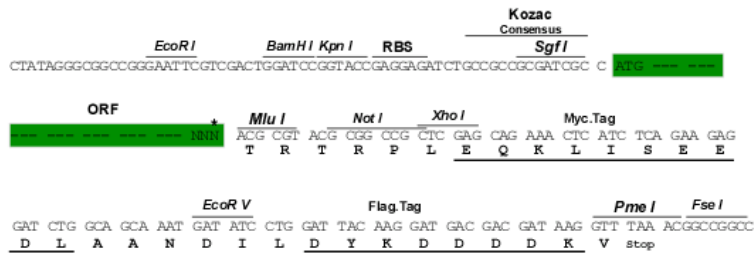
TRTRPLEQKLISEEDLAANDILDYKDDDDKV

Chromatograms: https://cdn.origene.com/chromatograms/mm9093_g05.zip

Restriction Sites: SgfI-MluI

Cloning Scheme:

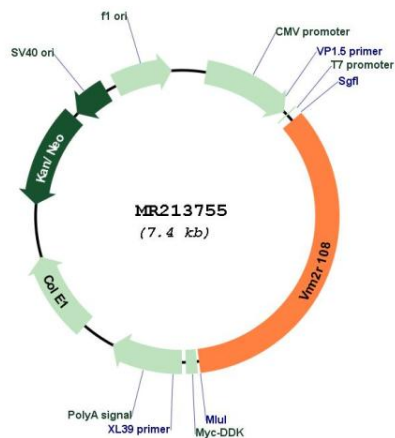
Cloning sites used for ORF Shuttling:



* The last codon before the Stop codon of the ORF

ACCN:	NM_001104570
ORF Size:	2565 bp
OTI Disclaimer:	The molecular sequence of this clone aligns with the gene accession number as a point of reference only. However, individual transcript sequences of the same gene can differ through naturally occurring variations (e.g. polymorphisms), each with its own valid existence. This clone is substantially in agreement with the reference, but a complete review of all prevailing variants is recommended prior to use. More info
OTI Annotation:	This clone was engineered to express the complete ORF with an expression tag. Expression varies depending on the nature of the gene.
Components:	The ORF clone is ion-exchange column purified and shipped in a 2D barcoded Matrix tube containing 10ug of transfection-ready, dried plasmid DNA (reconstitute with 100 ul of water).
Reconstitution Method:	<ol style="list-style-type: none">1. Centrifuge at 5,000xg for 5min.2. Carefully open the tube and add 100ul of sterile water to dissolve the DNA.3. Close the tube and incubate for 10 minutes at room temperature.4. Briefly vortex the tube and then do a quick spin (less than 5000xg) to concentrate the liquid at the bottom.5. Store the suspended plasmid at -20°C. The DNA is stable for at least one year from date of shipping when stored at -20°C.
RefSeq:	NM_001104570.1 , NP_001098040.1
RefSeq Size:	2568 bp
RefSeq ORF:	2568 bp
Locus ID:	627805
Cytogenetics:	17 A3.2
MW:	97.5 kDa

Product images:



Circular map for MR213755