

## Product datasheet for MR213746

### Fam110a (NM\_146127) Mouse Tagged ORF Clone

#### Product data:

Product Type:	Expression Plasmids
Product Name:	Fam110a (NM_146127) Mouse Tagged ORF Clone
Tag:	Myc-DDK
Symbol:	Fam110a
Synonyms:	1700008J10Rik; 5430432M24Rik; AI747080
Mammalian Cell Selection:	Neomycin
Vector:	pCMV6-Entry (PS100001)
E. coli Selection:	Kanamycin (25 ug/mL)
ORF Nucleotide Sequence:	>MR213746 ORF sequence Red=Cloning site Blue=ORF Green=Tags(s)

TTTTGTAATACGACTCACTATAGGGCGCCGGGAATTCGTCGACTGGATCCGGTACCGAGGAGATCTGCC  
GCC**CGGATCGCC**

ATGCCTGTGGATACGCTGAGCCCCGGAGCCCCGCCACTCCCGCCTACCTTTTCGCCTGAGAACCAAGG  
TTCCCGGCTACCTGCTACCAAGGCCAGCAGACGGGGGAGCCAGGAAACCGAGTGTGTGGAACGCCTGGA  
GGCTGATAAGGCTAAGTACGTCAAGAGCCTGCGTGTGGCCAACACCCGCCAAGAGCCGGTGCAGCCCCG  
CTGGTCAGACAGCCCCTTTCAGCCCTGGTCTCGCGGCCAGTGTCTCACCCAGTCGCCGAGTCTCTGC  
CCTGTTCTGGCCCGGCCCAACTGGACCTCGACATCCTTAGCAGCCTCATCAACTTGTGTGATAGTCC  
TGTGTCCCATCTGAGGCCAGCCGAACACTGGAAGGCCAGAAGGATCTGCCACAAGGTCCCACCAGCC  
ACCCCTCCTCGTCCGCCACCCAGTACTGTGCGGGTGCGCCGAGTGGACGTTGTCCTTGCCTGCTTCCAC  
CTGCTCGGCCCTATCCATCACCTGGCACCCTACCACTTCCAGCCCCGGCCGGCCCCCTGGCCTGCAGCG  
GTCCAAGTCGGACTTGAGTGAGCGCTTTTCCAGGGCAGCAGCCGATCTTGAGCGCTTTTTAACTTCTGT  
GGCCTGGACCCAGAGGAAGCGCGAGGATTGGGGTGGCCACTTAGCAAGGGCCAGCTCGGACATCGTGT  
CTTAGCCGGCCAAGTGTGACCTTGCAGCTCTGAAGGGGCTGCTCACGCCGAGCTCTGCTACAGT  
GGAAGAGCGGTCCCTGGATCGTGTCCCTATGGGGTGTCTGTGATCGAGCGAAACGCTCGTGTGATCAAG  
TGGCTATATGGGTTGCGGCAGGCTCGTGACCCTCCACCCTGAGGGT

**ACGCGT**ACGCGGGCCGCTCGAGCAGAAACTCATCTCAGAAGAGGATCTGGCAGCAAATGATATCCTGGATT  
ACAAGGATGACGACGATAAGGTTTAA



[View online »](#)

**Protein Sequence:** >MR213746 protein sequence  
Red=Cloning site Green=Tags(s)

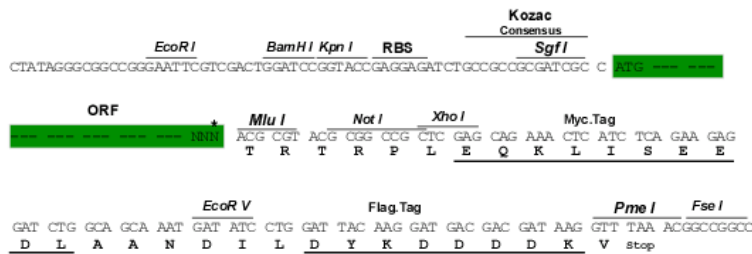
MPVDTLSPGAPATPALPFRRLRTKVPGYLLPRPADGGARKPSAVERLEADKAKYVKSLRVANTRQEPVQPP  
 LVRQPLFSPGPRGPVLTPSRRVLPSCGRRPQLDLIDLSSLINLCDSPVSPSEASRTPGRPEGSAHKVPPA  
 TPRPPPTVAVRRVDVRLPASPARYPSPGTTTTSSPGRPPGLQSKSDLSERF SRAAADLERFFNFC  
 GLDPEEARGLGVAHLARASSDIVSLAGPSAGPCSSEGGCSRSSATVEERSLDRVPYGVSVIERNARVIK  
 WLYGLRQARDPPTTEG

TRTRPLEQKLISEEDLAANDILDYKDDDDKV

**Restriction Sites:** SgfI-MluI

**Cloning Scheme:**

Cloning sites used for ORF Shuttling:



\* The last codon before the Stop codon of the ORF

**ACCN:** NM\_146127

**ORF Size:** 891 bp

**OTI Disclaimer:** The molecular sequence of this clone aligns with the gene accession number as a point of reference only. However, individual transcript sequences of the same gene can differ through naturally occurring variations (e.g. polymorphisms), each with its own valid existence. This clone is substantially in agreement with the reference, but a complete review of all prevailing variants is recommended prior to use. [More info](#)

**OTI Annotation:** This clone was engineered to express the complete ORF with an expression tag. Expression varies depending on the nature of the gene.

**Components:** The ORF clone is ion-exchange column purified and shipped in a 2D barcoded Matrix tube containing 10ug of transfection-ready, dried plasmid DNA (reconstitute with 100 ul of water).

**Reconstitution Method:**

1. Centrifuge at 5,000xg for 5min.
2. Carefully open the tube and add 100ul of sterile water to dissolve the DNA.
3. Close the tube and incubate for 10 minutes at room temperature.
4. Briefly vortex the tube and then do a quick spin (less than 5000xg) to concentrate the liquid at the bottom.
5. Store the suspended plasmid at -20°C. The DNA is stable for at least one year from date of shipping when stored at -20°C.

**RefSeq:** [NM\\_146127.3](#)

**RefSeq Size:** 1756 bp

**RefSeq ORF:** 891 bp

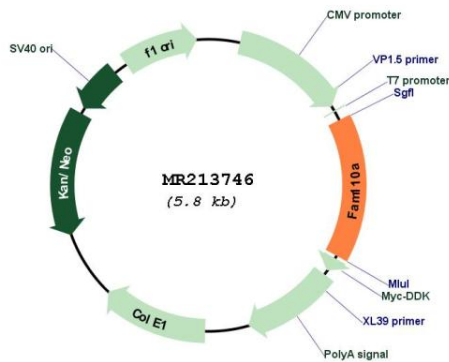
**Locus ID:** 73847

**UniProt ID:** [Q8R184](#)

**Cytogenetics:** 2 G3

**MW:** 31.6 kDa

**Product images:**



Circular map for MR213746