

Product datasheet for **MR213514**

4930505A04Rik (NM_001100394) Mouse Tagged ORF Clone

Product data:

Product Type: Expression Plasmids
Product Name: 4930505A04Rik (NM_001100394) Mouse Tagged ORF Clone
Tag: Myc-DDK
Symbol: 4930505A04Rik
Synonyms: RP23-145N4.1
Mammalian Cell Selection: Neomycin
Vector: pCMV6-Entry (PS100001)
E. coli Selection: Kanamycin (25 ug/mL)
ORF Nucleotide Sequence: >MR213514 representing NM_001100394
Red=Cloning site Blue=ORF Green=Tags(s)

TTTTGTAATACGACTCACTATAGGGCGGCCGGAATTCGTCGACTGGATCCGGTACCGAGGAGATCTGCC
GCC**CGATCGCC**

ATGGAGGGAGAGGAGAAGCAGCAACAGCATAAACAGAAGATGATGGTATAGCGTGTGTAGCTGAAAGAA
AAGTAGAAATCAAAAATGAAAAAGTCCTGGGAAAAGCACACAACACCCAAAACCATGTGTGGACAGAAG
ACGTGTAAATTATGCTAAATTCATACACACAAATGCAAGAACATAACAACGAGCCAGTTCCTACATTGAT
AATAAAGGGCCAGAAAAGCAGAGAAAATGGTGGTCCATAATGAAGCACCAAAACATGTCTCCAACCAT
CTTATGACACCAAAAGTGTCCAGCGGAGTGACTCCAGAAGCCAGCATGCCCATTTGGTTTTGCCAGTCAA
ACACAGCCGGATGCAAAAAGCCTTCTTGTGGAATAGTTCACCTTACCAGTCTGGATGTATCAGGAGAACAT
GAGAACAATTTGTAGAATACATCTCTTTTATACATCAATATGATGCCAGGAGAAGTCCCAATGAACCCA
TCAAAGGAAAGAAACATGGAACCTTCGTGCAGAGAGAGATAAAACTAGGGGCTATGCCAATAGTTCCTAA
GGCACCGGAGGTATTATTGAACACTCTAGAGTCAGGTTTCATCAGAACAGCCCCAAAAACAGACAAAGGA
AATTCATCAGGAGACAAAGTGACCTCACCAGGCCTATGCCAACAGAATCCCAAGAGTTGCTGGAGACT

ACGCGTACGCGGGCGCTCGAGCAGAAACTCATCTCAGAAGAGGATCTGGCAGCAATGATATCCTGGATT
ACAAGGATGACGACGATAAGGTTTAA



[View online »](#)

Protein Sequence: >MR213514 representing NM_001100394
Red=Cloning site Green=Tags(s)

MEGEEKQQQHKTEDDGIACVAERKVEIKNEKSPGKSTQHPKPCVDRRRVNYAKFIHTNARTYNEPVPIID
 NKGPEKQRKWWFHNEAPKHVSQPSYDTKSVQRSDFKPACPLVLPVKHSRMQKPCGIVPLTSLDVSGEH
 ENNFVEYISFIHQYDARRTPNEPIKGGKHGTFVQREIKLGAMPIVPKAPEVLLNTLESGSSEQPQKTDKG
 NSSGDKVTSPGLCQQNSQELLE

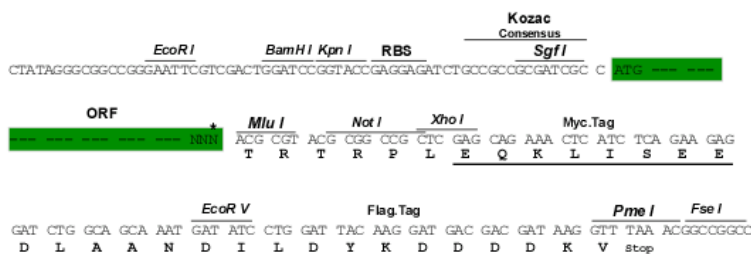
TRTRPLEQKLISEEDLAANDILDYKDDDDKV

Chromatograms: https://cdn.origene.com/chromatograms/mm9079_e08.zip

Restriction Sites: SgfI-MluI

Cloning Scheme:

Cloning sites used for ORF Shuttling:



* The last codon before the Stop codon of the ORF

ACCN: NM_001100394

ORF Size: 699 bp

OTI Disclaimer: The molecular sequence of this clone aligns with the gene accession number as a point of reference only. However, individual transcript sequences of the same gene can differ through naturally occurring variations (e.g. polymorphisms), each with its own valid existence. This clone is substantially in agreement with the reference, but a complete review of all prevailing variants is recommended prior to use. [More info](#)

OTI Annotation: This clone was engineered to express the complete ORF with an expression tag. Expression varies depending on the nature of the gene.

Components: The ORF clone is ion-exchange column purified and shipped in a 2D barcoded Matrix tube containing 10ug of transfection-ready, dried plasmid DNA (reconstitute with 100 ul of water).

Reconstitution Method:

1. Centrifuge at 5,000xg for 5min.
2. Carefully open the tube and add 100ul of sterile water to dissolve the DNA.
3. Close the tube and incubate for 10 minutes at room temperature.
4. Briefly vortex the tube and then do a quick spin (less than 5000xg) to concentrate the liquid at the bottom.
5. Store the suspended plasmid at -20°C. The DNA is stable for at least one year from date of shipping when stored at -20°C.

RefSeq: [NM_001100394.1](#), [NP_001093864.1](#)

RefSeq Size: 944 bp

RefSeq ORF: 702 bp

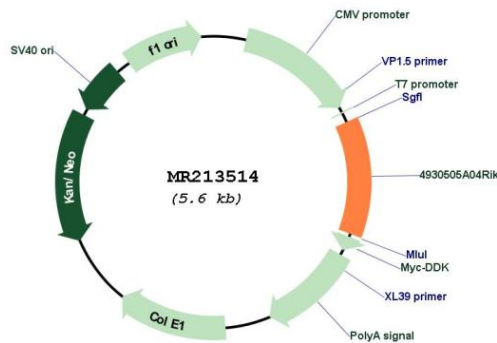
Locus ID: 75087

UniProt ID: [Q5SPV6](#)

Cytogenetics: 11 A4

MW: 26.4 kDa

Product images:



Circular map for MR213514