

Product datasheet for MR213231

Olfr272 (NM_146839) Mouse Tagged ORF Clone

Product data:

Product Type:	Expression Plasmids
Product Name:	Olfr272 (NM_146839) Mouse Tagged ORF Clone
Tag:	Myc-DDK
Symbol:	Olfr272
Synonyms:	MOR262-7
Mammalian Cell Selection:	Neomycin
Vector:	pCMV6-Entry (PS100001)
E. coli Selection:	Kanamycin (25 ug/mL)
ORF Nucleotide Sequence:	>MR213231 representing NM_146839 Red=Cloning site Blue=ORF Green=Tags(s)

TTTTGTAATACGACTCACTATAGGGCGGCCGGAATTCGTCGACTGGATCCGGTACCGAGGAGATCTGCC
GCC**CGATCGCC**

ATGGAGATGACCAATGATTCCATGTTGACAGAATTTCTCTTGGTGGGCTTTCTGATCACCCGAAGCTGC
AGACGGTTTTATTTGTGCTAGTTTTGTGCATGTATCTGATGATCCTGCTTGAAATGGCGTTCTTATCGC
AGTAGTCATCCATGACATCCGCCTGCACACTCCCATGATTTTTCTCTGTAATCTTCTCTCTGGAC
ATCTGCTACACAAGCTCTTCTGTCCCCAATTCTCAGTAGCTTCTGACAGTAAGGAAGAGAGTGTCT
TCTCTGAGTGTATGATTCAAATGTTCTTCTCTTGGCATGGGTGCCACAGAATGTGACTTCTAGGCAC
GATGGCACTTGACCGCTTATGGCCATCTGTTACCCACTGAGGTATCCTGTCATCATGAGCAAGGATACC
TATGTGCCCATGGCAGCTGGATGCTGGGTGCTGGGCTTGTGACTCAGTGGTACAGACCTCTTGCAG
TGCAATTACCAATTCTGCACTAATAATGTCATTCACCACTTCGTCTGCGAAATTCTGGGCATTCTGGAAT
GGCTTGTGCAGATATTTCAATCAACGTGATCAGCCTAACAGGGTCAAATCTGCTTTTTCTAGCTGTTCCG
TTGCTAGTTATTGCTGTCTTTACATGTTATCATTTGCAACTATTTGAGGATTCCTTCTGCTGAAGGAA
AACGGAAGGCCTTCTCCACCTGCTCTGCCACCTGACAGTGGTAATTATCTTCTATGGAACCATCTTCTC
CATGTACGCAAAGCCCAAGTCTAAAGACACCGCTGGGGCAGGCCATCAAAGCGTGATGGAGGCCCTCATC
TCCCTCTTCTATGGGGTATGACCCCATGCTCAATCTTATCTACAGTCTGAGGAATAAGGATGTGA
AGGCTGCTGTTTCAAGACATGCTGGGAAGGAAAACGTTGAGTAAGATG

ACGCGTACGCGGCCGCTCGAGCAGAAACTCATCTCAGAAGAGGATCTGGCAGCAAATGATATCCTGGATT
ACAAGGATGACGACGATAAGGTTTAA



[View online »](#)

Protein Sequence: >MR213231 representing NM_146839
Red=Cloning site Green=Tags(s)

MEMTNDMSMLTEFLLVGLSDHPKLQTVLFVVLVLCMYLMILLGNGVLIHAVIHDIRLHTPMYFFLCNLSFLD
 ICYTSSSVPLILSSFLTVRKRVSFSECMIQMFFSFAMGATECVLLGTMALDRFMAICYPLRYPVIMSKDT
 YVPMAGCWVAGLVDSVQVTS LAVQLPFCTNNVIHHFVCEILGILELACADISINVISL TGSNLLFLAVP
 LLVIAVSYMFIIATILRIPSAEGKRKAFSTCSAHLTVVIIIFYGTIFSMYAKPKSKDTAGAGHQSVMEALI
 SLFYGVGMPMLNPLIYSLRNKDVKAAVQNMLGRKTL SKM

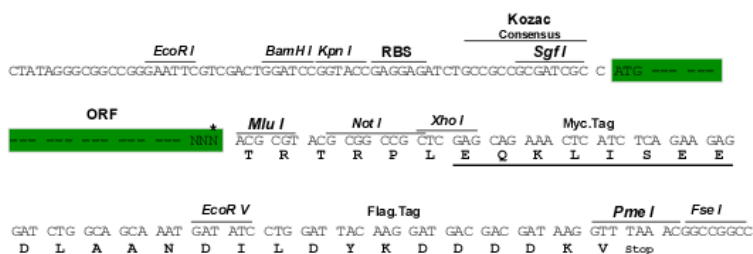
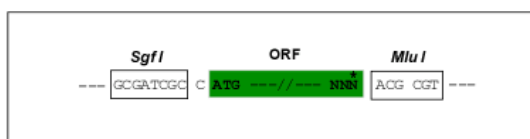
TRTRPLEQKLISEEDLAANDILDYKDDDDKV

Chromatograms: https://cdn.origene.com/chromatograms/mm9021_c09.zip

Restriction Sites: SgfI-MluI

Cloning Scheme:

Cloning sites used for ORF Shutting:



* The last codon before the Stop codon of the ORF

ACCN: NM_146839

ORF Size: 957 bp

OTI Disclaimer: The molecular sequence of this clone aligns with the gene accession number as a point of reference only. However, individual transcript sequences of the same gene can differ through naturally occurring variations (e.g. polymorphisms), each with its own valid existence. This clone is substantially in agreement with the reference, but a complete review of all prevailing variants is recommended prior to use. [More info](#)

OTI Annotation: This clone was engineered to express the complete ORF with an expression tag. Expression varies depending on the nature of the gene.

Components: The ORF clone is ion-exchange column purified and shipped in a 2D barcoded Matrix tube containing 10ug of transfection-ready, dried plasmid DNA (reconstitute with 100 ul of water).

Reconstitution Method:

1. Centrifuge at 5,000xg for 5min.
2. Carefully open the tube and add 100ul of sterile water to dissolve the DNA.
3. Close the tube and incubate for 10 minutes at room temperature.
4. Briefly vortex the tube and then do a quick spin (less than 5000xg) to concentrate the liquid at the bottom.
5. Store the suspended plasmid at -20°C. The DNA is stable for at least one year from date of shipping when stored at -20°C.

RefSeq: [NM_146839.1](#), [NP_667050.1](#)

RefSeq Size: 960 bp

RefSeq ORF: 960 bp

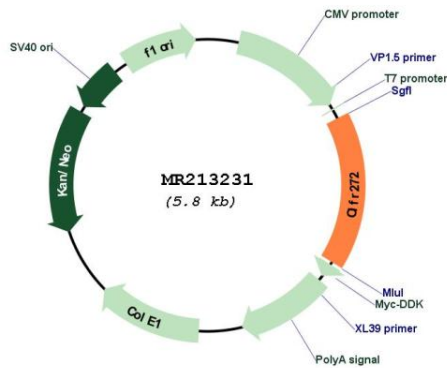
Locus ID: 258836

Cytogenetics: 4 B2

MW: 35.7 kDa

Gene Summary: Olfactory receptors interact with odorant molecules in the nose, to initiate a neuronal response that triggers the perception of a smell. The olfactory receptor proteins are members of a large family of G-protein-coupled receptors (GPCR) arising from single coding-exon genes. Olfactory receptors share a 7-transmembrane domain structure with many neurotransmitter and hormone receptors and are responsible for the recognition and G protein-mediated transduction of odorant signals. The olfactory receptor gene family is the largest in the genome. The nomenclature assigned to the olfactory receptor genes and proteins for this organism is independent of other organisms. [provided by RefSeq, Jul 2008]

Product images:



Circular map for MR213231