

## Product datasheet for MR213224

### Arhgap27 (NM\_183288) Mouse Tagged ORF Clone

#### Product data:

Product Type:	Expression Plasmids
Product Name:	Arhgap27 (NM_183288) Mouse Tagged ORF Clone
Tag:	Myc-DDK
Symbol:	Arhgap27
Synonyms:	2310069I04Rik; 5730442P18Rik; Gm21552; Sh3d20
Mammalian Cell Selection:	Neomycin
Vector:	pCMV6-Entry (PS100001)
E. coli Selection:	Kanamycin (25 ug/mL)
ORF Nucleotide Sequence:	>MR213224 ORF sequence Red=Cloning site Blue=ORF Green=Tags(s)

TTTTGTAATACGACTCACTATAGGGCGGCCGGAATTCGTCGACTGGATCCGGTACCGAGGAGATCTGCC  
GCC**CGATCGCC**

ATGGCGGCGGACGTCGAGGGGGACGTGTACGTGCTGGTGGAAACCCCTTCGAGTACACCGCAAAGACG  
GGCGCCGCATCGCCATCCAACCGAACGAGCGTTACCGACTGCTGCGCCGAGCACCAGCACTGGTGGCA  
CGTGGCGGGGAGCCCGGGGTGCCCCCTTCTACCTCCCGCGCAGTACGTACGCGAGCTGCCCGCGCTC  
GGCGACCCTGCCCGGCCCGCAGCCTTCCGTACCGCAGCAGCGCCCGCAGTCCCGAACCTCTGGCT  
ACGACTACCGCTTCGTGAGCACCCGGTGGCGCCGATGGTCTCTGCCGAGCCCGGGGCGCGCCAG  
CTCCCTGTGTGGCCCTGCACGACAGCGCACCGGTGGCCAGCGCAACAGCCTGGCTCCGGGAGGGCCCGCC  
TGCCCTTACGTGCGGCCCGCGGCCTGTGCGACCGCGCAGTCCCTGGATGACTTGCGCGCGGGCGGTA  
CCGCGCCCCCTGCCGGCCTCCTCGGCAGCGCGGCCACTTCAAGGCTCCAGCGTGGCGGGCTCCTGGGT  
TTGTCCCCGGCCCTGGCGCCTAGCGACTCGGAGAATGTCTACGAGGCCATTCCGGACTTGCGCTGCCCT  
CCGCGGGCAGAGAGCCCAAAGCAGGTAGGTCGCTGCGAGCGAGGGGGCCGGAGGGAGTACAGTCCAGC  
AGAGTCTAGATGCTTTTTTTTTTTTAAAC

**ACGCGT**ACGCGGCCGCTCGAGCAGAACTCATCTCAGAAGAGGATCTGGCAGCAAATGATATCCTGGATT  
ACAAGGATGACGACGATAAGGTTTAA



[View online »](#)

**Protein Sequence:** >MR213224 protein sequence  
 Red=Cloning site Green=Tags(s)

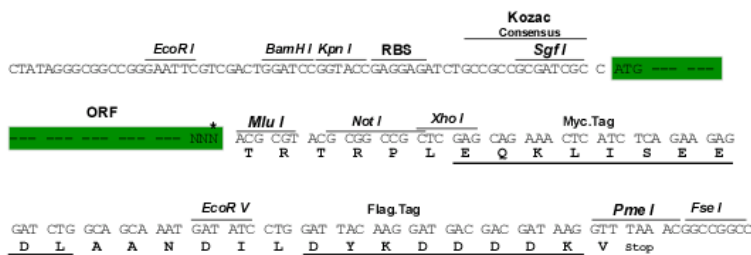
MAADVEGDVYVLVEHPFEYTGKDGRRIAIQPNERYLLRRSTEHWWHVRREPGRPFYLPAAQYVRELPA  
 GDPAPAPQPSVPQQRPAVPEPLAYDYRFVSTPVGADGSSAEPRGRASSLCGPARQRTGGQRNSLAPGGPA  
 CLYVRPAAPVRPAQSLDDLARGGTAPPAGLLGSAGHFKASSVAGSWVCPRLAPSDSENVYEAIPDLRCP  
 PRAESPKQVGRCEGRREVTVQQSLDAFFFFN

TRTRPLEQKLISEEDLAANDILDYKDDDDKV

**Restriction Sites:** SgfI-MluI

**Cloning Scheme:**

Cloning sites used for ORF Shuttling:



\* The last codon before the Stop codon of the ORF

**ACCN:** NM\_183288

**ORF Size:** 732 bp

**OTI Disclaimer:** The molecular sequence of this clone aligns with the gene accession number as a point of reference only. However, individual transcript sequences of the same gene can differ through naturally occurring variations (e.g. polymorphisms), each with its own valid existence. This clone is substantially in agreement with the reference, but a complete review of all prevailing variants is recommended prior to use. [More info](#)

**OTI Annotation:** This clone was engineered to express the complete ORF with an expression tag. Expression varies depending on the nature of the gene.

**Components:** The ORF clone is ion-exchange column purified and shipped in a 2D barcoded Matrix tube containing 10ug of transfection-ready, dried plasmid DNA (reconstitute with 100 ul of water).

**Reconstitution Method:**

1. Centrifuge at 5,000xg for 5min.
2. Carefully open the tube and add 100ul of sterile water to dissolve the DNA.
3. Close the tube and incubate for 10 minutes at room temperature.
4. Briefly vortex the tube and then do a quick spin (less than 5000xg) to concentrate the liquid at the bottom.
5. Store the suspended plasmid at -20°C. The DNA is stable for at least one year from date of shipping when stored at -20°C.

**RefSeq:** [NM\\_183288.3](#), [NP\\_899111.2](#)

**RefSeq Size:** 2099 bp

**RefSeq ORF:** 732 bp

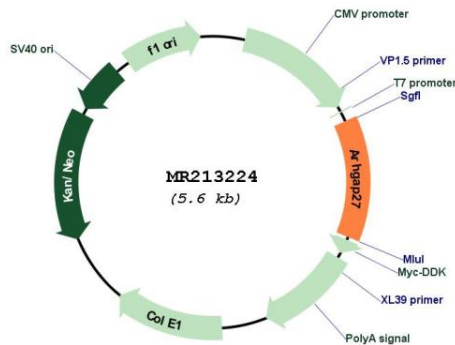
**Locus ID:** 544817

**Cytogenetics:** 11 E1

**MW:** 26.4 kDa

**Gene Summary:** Rho GTPase-activating protein which may be involved in clathrin-mediated endocytosis. GTPase activators for the Rho-type GTPases act by converting them to an inactive GDP-bound state. Has activity toward CDC42 and RAC1 (By similarity).[UniProtKB/Swiss-Prot Function]

**Product images:**



Circular map for MR213224