

Product datasheet for **MR213114**

Vmn2r24 (NM_001104639) Mouse Tagged ORF Clone

Product data:

Product Type:	Expression Plasmids
Product Name:	Vmn2r24 (NM_001104639) Mouse Tagged ORF Clone
Tag:	Myc-DDK
Symbol:	Vmn2r24
Synonyms:	EG243628
Mammalian Cell Selection:	Neomycin
Vector:	pCMV6-Entry (PS100001)
E. coli Selection:	Kanamycin (25 ug/mL)



[View online »](#)

ORF Nucleotide Sequence:

>MR213114 representing NM_001104639
 Red=Cloning site Blue=ORF Green=Tags(s)

TTTTGTAATACGACTCACTATAGGGCGGCCGGAATTCGTCGACTGGATCCGGTACCGAGGAGATCTGCC
 GCC**CGCATCGCC**

ATGAAATTGCTCATTGCTTTCTCTCCTCTGATTGTTCTCATTTTTTCCAGGAACAAATTCCTGTTTTT
 ACTTAGCTAAATCTGCTTCTTGCTACTATCAAGATGGGGATTTGTTATTGGAGGACTCTTAGCCT
 TAGAATGACTCTTGGTGGACACCTTAAACCTAAAATTCTCTTAAAGATAAAAACGGATACACTGGATGTT
 GTTCATGTGGATCTCACCAGACATTATCAGCACATTTGGCAATTGTTTTGCTATAGAAAAATCAACA
 AGGACCCACATATTTTATCAATATGTCCTGGGCTTCTATCTTCAATGTTAACTTTATTGAGACAAA
 GGCCATGGAAAGTTCTATGGGTTGCTCTCAGGAGAGAGCCCCCAATTCCTAACTATACCTGCAGGCCT
 GAGAAGACTGACAAGCTGGTGCAGTAATAGGAGGCATTTCAACATCAATATCCACTCAGATCTCCCGAG
 TTTTAAGTCTCTACAACATTCACAGATCAGCTATGCTCCTTTGACCAGAGTCTGGGACCAGTGCCA
 GCTCCAGTCTCCTTACCAGTTCCAGTGCACAACGTAGCTCTGTATCAGGGAATTATTCAACTGCTGCTA
 TACTTCACCTGGGCTGGGTTGGCTGGTGGTCCAGATGATATGAGGGGAGAATCTTCTTAGGGACA
 TCACAGAGGAGATGACAAATCATGGACTTTGTGTAGCATTTCAGAAAAGGTTACAGAATTTTCTGCTAC
 AAAATCAGTAAACCTGAAACATTTATGGAAAGAGTCACATTGACAGGTGTTATTGTTGCATTTGGTGAC
 ACTCATGATTTTCTGATTAGTGTCTATCTCAGCATTACTATGCTCCTTTGGTAATATATGGATCACAA
 CTTCTGATTGGTATATCACATTACCTATTGAACAAAATCGTGTTATAGACACTTTGGTGGAGGATTATT
 ATTTTCGTTTACATGGATGAAATCTGGGATTCAGGATTTTCTCAGAAGTGTTCAACCTAGAAAAATAC
 CCTCATGATATCTTATCCAGGATGTGTGGTCCATCTTATTTGAATGCCATATTTTGATAAGGATGGAG
 TCAGGGAACCAAGTCAATGTGAGCCAAATGGCAGCCTAAGCACAGACCTCTGCATGCTTGGGATGAA
 TACCTCACCTCAAGCTACAAAGTTCATGCTGTGTATGCCATTGCCAGGCACTCCATGAGGAGCTG
 TCACTCAGAGTGGAAGGAGACTCACTTGATAAAAAGTGTACTCCGGCCTCCTTTGCCATGGAAGCTCCATC
 CATTCTTACAAAACAGCCAACCTGGGAGAAGCTCCAATGAGAAGAAGCTTGTGAACAAGGAAGTTTCAGC
 AACCAAGCTTGACATCTTAAATACCAGTCTCTGCAGAGTGGTACCAAAGCTCAAGTGAAGTTGGCGAG
 TTTGCTTTGAATCTCACAGTGTTCAGCATCTTCCCTAAATGACAAGCTCATAACTGGGGTGAACACC
 ACAATCAGTCTCCTTATCTGCTGTAGTCAAAGTTGCCACTTGGATTTAGGAAAACATCTGTTGAAGG
 GAAACCATTTTGTGTTTGTGTTGATTGCCCCATGTCCAGATGGAGAGATTGCAAATGAAACAGATATGGAT
 CAATGTATCAAGTGTCCGAAGATCAGTATCCGAATAAACAGAGGAATCAGTGTCTTCTAAAATTATGG
 TATTTTTGTCCCATGAAGATACTCTGGGAGCTGTTTGGTCTCCTTGGCCATTAGTTTATCTGCCTTTTC
 AGCCATGATTTTAGGATTATTTGTCTGCTATCGGGACACATCCATTGTCAGAGCAAATAACAGAAATCTC
 AGTTATCTCCTCCTAATTTCTCTAATGTTTTGTTCTTTTGTCTATTAATATTATTGGCCAACCTAGCA
 CAGTCACTTGTGCTTGAGACAAATGATTTTGGGGTGTATTTTCTGTTGCTGTGTCTGCTATCTTGGC
 AAAGACCTTTATGTGGTTGTAGCCTTCAAAGCCATCAAACCAGGAAGCAGATTACAAATGTGGATGGTG
 ATGCGACTCTCAAATGTTATAGTCTGCTGTGGTCCATCATTCAAGTGTGCATCTGTGCAGTCTGGCTGG
 GAACATACCCACCTTTCCCTGATGTTGACATGCACTCAGAATTTGGTACATCCTCTGTTGTAATGA
 GGGTCCACTCTTGCCTTCTATTGTGTTCTGGGCTACTTGGGCTTCTGGCCAGTCTCAGCTTGCTTATT
 GCTTTTCTGGTGAGAAGGTTACCTGACAGTTTCAATGAGGCAAAAACAATCACATTCAGCATGCTGGTTT
 TCTGCAGTGTGTGGATTTCTTTCATACCCACTTACCTGAGCTCCACAGGCAAAACCATGGTGGCTGTGGA
 AATTTTTTCCATTCTGGCTTCCAGTGTGGCTTACTGGGATGTATGTTTCTTCCAAATGCTATGTGATT
 CTACTGAGGTCAGCTGACCTTTCGAAAAGAAGTCTTTAAA

ACCGGTACGCGGCCGCTCGAGCAGAACTCATCTCAGAAGAGGATCTGGCAGCAAATGATATCTGGATT
 ACAAGGATGACGACGATAAGGTTTAA

Protein Sequence: >MR213114 representing NM_001104639
 Red=Cloning site Green=Tags(s)

MKLLIAFSPLIVL IFFQEIQISCFYLAKSASSGGYQDGFVIGGLFSLRMTLGGHLKPKILFKDKTDTLDV
 VHVDLTRHYQHILAIVFAIENINKDPHILFNMSLGFYLFNVNFIETKAMESSMGLLSGESPPIPNYTCRP
 EKTDKLVAVIGGI STSISTQISRVL SLYNIPQISYAPFDQSLGTSVQLQSPYQFPVHVALYQGIQLLL
 YFTWVWVGLVVPDDMRGELFLRDITEEMTNHGLCVAFAEKVTEFSATKSVNLKHFMERVTLTGVI VAFGD
 THDFLISVYLSIYYAPFGNIWITTSDWYITLPIEQNRVYRHFGGLLFSFHMDEILGFKDFLRVSVQPRKY
 PHDIFIQDVWSILFECPYFDKDGVREL SQCEPNGSLSTRPLHAWDMNTSPSSYKVHAAVYIAQALHEEL
 SLRVEGDSL DKS VLRPPLPWKLHPFLQNSQLGRSSNEKNVNVKEVSATKLDIFNYQLSGTKAQVKVGE
 FVFESHVQHLSLNDKLI TWGEHNNQSPLSACSQSCPLGFRKTSVEGKPFCCFDCAPCPDGEIANETDMD
 QCIKCPEDQYPNKQRNQCLPKIMVFLSHEDTLGAVLVSLAISLSAFSAMILGLFVCYRDT SIVRANNRNL
 SYLLLISLMFCFFCSLIFIGQPSTVTCVLRQMIFGVVFSVAVSAILAKTFIVVFAKAIKPGSRLQMMWV
 MRLSNVIVCCGSIQVCICAVWLGTYPFPDVMHSEFGHIILCCNEGSTLAFYCVLGYLGLASL SLLI
 AFLVRRLLPDSFNEAKTITFSMLVFCVWISFIPTYLSSTGKTMVAVEIFSILASSAGLLGCMFLPKCYVI
 LLRSADLSRKKFFK

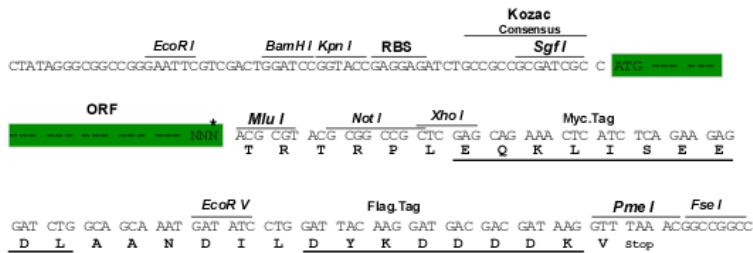
TRTRPLEQKLISEEDLAANDILDYKDDDDKV

Chromatograms: https://cdn.origene.com/chromatograms/mm9099_d02.zip

Restriction Sites: SgfI-MluI

Cloning Scheme:

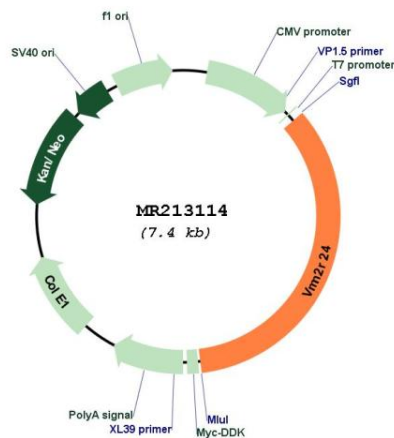
Cloning sites used for ORF Shuttling:



* The last codon before the Stop codon of the ORF

ACCN:	NM_001104639
ORF Size:	2562 bp
OTI Disclaimer:	The molecular sequence of this clone aligns with the gene accession number as a point of reference only. However, individual transcript sequences of the same gene can differ through naturally occurring variations (e.g. polymorphisms), each with its own valid existence. This clone is substantially in agreement with the reference, but a complete review of all prevailing variants is recommended prior to use. More info
OTI Annotation:	This clone was engineered to express the complete ORF with an expression tag. Expression varies depending on the nature of the gene.
Components:	The ORF clone is ion-exchange column purified and shipped in a 2D barcoded Matrix tube containing 10ug of transfection-ready, dried plasmid DNA (reconstitute with 100 ul of water).
Reconstitution Method:	<ol style="list-style-type: none"> 1. Centrifuge at 5,000xg for 5min. 2. Carefully open the tube and add 100ul of sterile water to dissolve the DNA. 3. Close the tube and incubate for 10 minutes at room temperature. 4. Briefly vortex the tube and then do a quick spin (less than 5000xg) to concentrate the liquid at the bottom. 5. Store the suspended plasmid at -20°C. The DNA is stable for at least one year from date of shipping when stored at -20°C.
RefSeq:	NM_001104639.1 , NP_001098109.1
RefSeq Size:	2565 bp
RefSeq ORF:	2565 bp
Locus ID:	243628
Cytogenetics:	6 F2
MW:	95.9 kDa

Product images:



Circular map for MR213114