

## Product datasheet for **MR212912**

### Mindy4 (NM\_177883) Mouse Tagged ORF Clone

#### Product data:

Product Type:	Expression Plasmids
Product Name:	Mindy4 (NM_177883) Mouse Tagged ORF Clone
Tag:	Myc-DDK
Symbol:	Mindy4
Synonyms:	C330043M08Rik; Fam188b; Gm1406
Vector:	pCMV6-Entry (PS100001)
E. coli Selection:	Kanamycin (25 ug/mL)
Cell Selection:	Neomycin



[View online »](#)

**ORF Nucleotide Sequence:**

>MR212912 representing NM\_177883  
 Red=Cloning site Blue=ORF Green=Tags(s)

TTTTGTAATACGACTCACTATAGGGCGGCCGGAATTCGTCGACTGGATCCGGTACCGAGGAGATCTGCC  
 GCC**CGCATCGCC**

ATGGACAGTCTGTACGTGGAGGAGTGGCCGCTCCCTGGTCAGGGAGTTTCTTAGCAGAAAGGGTTTGA  
 ACAAGACATTTGTGACCATGGACCAGGAGCGCCCGCTGTGAGCTTAGCATCAACAGCAGAAATGATCT  
 CCGCAAAGTTCTGCATCTGGAGTTTCTCTACAAGGAGAACAAGGCAAAAGAAAAGCCTCTAAGAACAAAC  
 CTGGAGCTCATTACCAGTACTTTCTGGATAATGTTGAAATACAGATAACAGTAAAAGTCAAGAAGTCC  
 CAATCCCTGCAATCCCTGTTCCAAAGAAAAACAAGTTGCCTTTGAGACACTCAGAGACCACATTGGT  
 GAATATAACGACCTTTAGATGAAGATACGGGAAGACGGACATCATGGTCAGAAGCAGGCAAGCCAGG  
 CATGACAGTCTGGATGGGACATACTTGGTAATTCGTATCATCAAAAAACCCTCACACAAAAGTAAGG  
 CTGCACACGTGGACCTGGGTGACAGCCTCCCGTTGGTTCTCGTGGGAGAAGGTGGACCAGCTTCACTC  
 ATCAGAGCCCGGTATAGATGTGAAGAAGACAATGGAGAGGACCAGGCCTAAGTCTGGCCTGATTGCCGA  
 GGCATGATGGCTGGGCTGTCCGACGCTCCCTCAGGACTCTTCCGCAACGCTCTCTGAGAAGGTCTCT  
 CAGCTCTGAGCAGGAAGCTCAAACCCAGAGGAGATCCAGCAGCAGTCTGAGCCTTTTGTCCACACCCC  
 AGCCTATCTGGGTCCACAGGAGTCCCGATTCCAGCAGTACTCCGTCTCCAGAAGCCCTCTGGGCCAG  
 CTGAATGAACTGTCTATAGAGAAGCCAAATGTCACCTTCTAGCAGCCAAGGGCTGTCCAGAGGGACAGAC  
 CCAGGCTAAGAAGTGTTCAGAGGACAGCCACTGGGGTACAGCCACACAGAGGGGAATTCAGGATGGC  
 CCAGGACCAGCTGAAAGAGCGTTCAAGCGTCAGGGCGTCCAGCCTCCATCTCTCAGGAAAAATCAGTTG  
 GTGTCTGACAGGACGGATGATAAGCCAGATGCCCTGCAGCTAGAGGATGTTGAGGATGAGTTGATAAAG  
 AAGACATTGTCTTGTTCACCTCCATCAATGCTCAAGCTTCAAGCTGTGTCAAAGCCAATTGACCTCTC  
 ACTGGCTAAGGAGATAAAGACCCTTCTGTTGGCTCTACCTTTTGTCTCAGTGAAGAATGAAACTT  
 CAGAACTTTTCTCAATGACATTGCCTCGTTAAAATACGGCATTGTGCAGAACAAGGGTGGTCCCTGTG  
 GGGTTCTGGCAGCTGTTCAAGGCTGTGTGCTTCAGAACTCCTGTTTGAAGGAGATAACAGAACCAACTC  
 TAATCTCCGGCTGCAGCCCTCAGATGCCAGAGGACTCGTGCCTTGGCCTGGCCATTGCCGACATCCTG  
 TGGCGAGCTGGAGGCAAAGAACAAGCCGTGGTTGCACTGGCTCAGGAACACCGCACTTCAAGTCAAACAG  
 GAAATACAAAGCAGATGGAGTCTTAGAAACAGTACGGCTTTCTGAAAACATCGTGCCACCTTTGGCT  
 TTGTTTGGGACTATCTCTTTTATATAAGTAAATCTACCCAGCTGGGGCTGGCTGGCCATCCCTGCA  
 GCCAGGCCCCCAAGATCTGCCTGCCCTTTGGGGTGGGAGAGCTGAGTGGCTTGGTGGTTTGGCGT  
 GTTTGGCATGGTTTGGCGTGGTTGGCTCATCAGAGCTGGTTCAGTGGC

**ACGCGT**ACGCGGCCGCTCGAGCAGAAACTCATCTCAGAAGAGGATCTGGCAGCAAATGATATCCTGGATT  
 ACAAGGATGACGACGATAAGGTTTAA

**Protein Sequence:**

>MR212912 representing NM\_177883  
 Red=Cloning site Green=Tags(s)

MDSL YVEEVAASLVREFLSRKGLNKTFVMDQERPRCELSINSRNDLRKVLHLEFLYKENKAKEKPLRTN  
 LELITRYFLDNVNTDNSESQEVPIPAIPVPKKNNKLPLRHSETTLVNIYDLSDEDTGRRTSWSEAGKAR  
 HDSLDGDILGNFVSSKPKSHKSKAAHVLDGDSLPLVPAWEKVDQLHSSEPGIDVKKTMERTRPKSGLIVR  
 GMMAGPVASSPQDSFRKRSRRSSALSRLQTPPEEQQSEPFVHTPAYLGPQEVDPSSSDSVSRPLGQ  
 LNELSIEKPNVTSSSQLSQRDRPRLRSVSEDSPLGYSHTEGNSRMAQDQLERAFKRQGVQPPSLRNQL  
 VSDRTDDKPDALQLEDVEDELIKEDIVLFPPPSMLKLQTVSKPIDLSLAKEIKTLFLFGSTFCFSEEWKL  
 QNFSFNDIASLKYGIVQNKGGPCGVLAAVQGCVLQKLLFEGDNRTNSNLRQLQPSDAQRTCLALAIADIL  
 WRAGGKEQAVVALASGTPHFSPGKYKADGVLETVRLSGKLSCHLWLCGTISFHISKSYPSWGWLAIPA  
 AQAPRILPALWGLGRAEWLGLAWFGMVWRGLAHQSWFSG

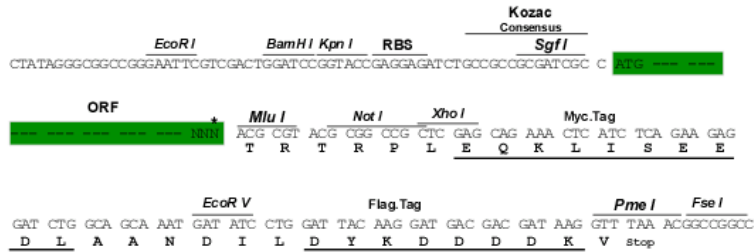
**TRTRPLEQKLI**SEEDLAANDILDYKDDDDKV

**Restriction Sites:**

SgfI-MluI

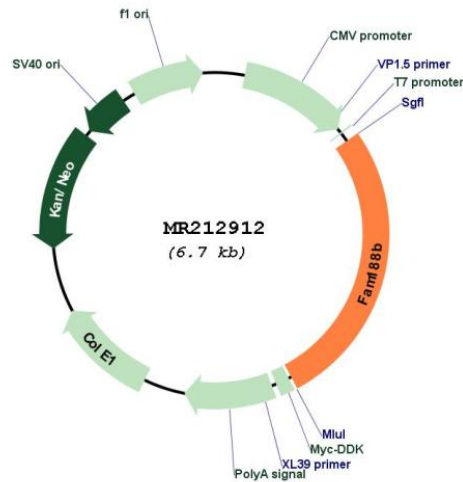
Cloning Scheme:

Cloning sites used for ORF Shuttling:



\* The last codon before the Stop codon of the ORF

Plasmid Map:



ACCN: NM\_177883

ORF Size: 1800 bp

<b>OTI Disclaimer:</b>	The molecular sequence of this clone aligns with the gene accession number as a point of reference only. However, individual transcript sequences of the same gene can differ through naturally occurring variations (e.g. polymorphisms), each with its own valid existence. This clone is substantially in agreement with the reference, but a complete review of all prevailing variants is recommended prior to use. <a href="#">More info</a>
<b>OTI Annotation:</b>	This clone was engineered to express the complete ORF with an expression tag. Expression varies depending on the nature of the gene.
<b>Components:</b>	The ORF clone is ion-exchange column purified and shipped in a 2D barcoded Matrix tube containing 10ug of transfection-ready, dried plasmid DNA (reconstitute with 100 ul of water).
<b>Reconstitution Method:</b>	<ol style="list-style-type: none"> <li>1. Centrifuge at 5,000xg for 5min.</li> <li>2. Carefully open the tube and add 100ul of sterile water to dissolve the DNA.</li> <li>3. Close the tube and incubate for 10 minutes at room temperature.</li> <li>4. Briefly vortex the tube and then do a quick spin (less than 5000xg) to concentrate the liquid at the bottom.</li> <li>5. Store the suspended plasmid at -20°C. The DNA is stable for at least one year from date of shipping when stored at -20°C.</li> </ol>
<b>RefSeq:</b>	<a href="#">NM_177883.4</a> , <a href="#">NP_808551.2</a>
<b>RefSeq Size:</b>	2211 bp
<b>RefSeq ORF:</b>	1803 bp
<b>Locus ID:</b>	330323
<b>UniProt ID:</b>	<a href="#">Q3UQI9</a>
<b>Cytogenetics:</b>	6 B3
<b>MW:</b>	67.2 kDa
<b>Gene Summary:</b>	Probable hydrolase that can remove 'Lys-48'-linked conjugated ubiquitin from proteins. [UniProtKB/Swiss-Prot Function]