

Product datasheet for **MR212802**

Nadk2 (NM_001040395) Mouse Tagged ORF Clone

Product data:

Product Type:	Expression Plasmids
Product Name:	Nadk2 (NM_001040395) Mouse Tagged ORF Clone
Tag:	Myc-DDK
Symbol:	Nadk2
Synonyms:	MNADK; Nadkd1
Mammalian Cell Selection:	Neomycin
Vector:	pCMV6-Entry (PS100001)
E. coli Selection:	Kanamycin (25 ug/mL)



[View online »](#)

ORF Nucleotide Sequence:

>MR212802 representing NM_001040395
 Red=Cloning site Blue=ORF Green=Tags(s)

TTTTGTAATACGACTCACTATAGGGCGGCCGGGAATTCGTCGACTGGATCCGGTACCGAGGAGATCTGCC
 GCC**CGCATCGCC**

ATGACTTGCTACCGGGCTTCTGCTGGGCAGCTGCCGGCGCTGGCGGGTGGCCGCGCGCTCTGCGGG
 GTTCGGGCTCGGGCGCGACGGCCGGCGCACTTGGGGCACGGGACGCCGCGAGCTGGCGGGCGGTGG
 TAGCCCCGCCGACGGCGGCTTCCGCCCTCGCGGGTGGTGGTGGCGAAAACCCCGCTACGAGTTC
 GAGCAGCAGCGGTACCGCTACGCGGAGCTCTCGGAGGAGACCTGAAGCAGCTGCTTGCAATGAAAGGCT
 CGAGCTACAGTGGACTACTTGAGCGACATCATATTCACACAAAAATGTAGAACACATAATTGATAGTTT
 ACGGGATGAAGGATTGAGGTTCCGCTGGTCAAGCGGAGGGAGTACGATGAAGAGACAGTTCGATGGGCA
 GACGCTGCATAGCTGCGGGAGGTGATGGCAGATGCTTCTGGCTGCGAGTAAAGTCTGGACAGACTTA
 AACCTGTCATTGGGGTCAACACTGATCCGGAACGGTCTGAAGTCACTTATGCTGCCTGTGCGATACAC
 GCATTCTTCCCGAAGCCTTACGGAGGTTCTCTCGTGGTGGTTCAGGTGGTGTGGAGGCAGCGGATC
 AGGTTATATCTGGAAGGACTGGCATAAACCCCACTCCCGTGGACCTTACGAACAGCAGCTGAGCTTGA
 ATCAGCACAGCCGAGCCTTAAACATCGAAAGAGCGCACGATGAAAGGTCGGAGGCGTCAGGGCCTCAGCT
 TCTGCCGGTGAGAGCGCTCAATGAAGTCTTCAATGGGGAGAGCCTGTATCCAGGGCTTCTACTATGAA
 ATTTCACTCGATGACGGCCATGGGAGAAGCAGAAGAGCTCAGGGCTCAATTTGTGCACTGGGACAGGAT
 CGAAGGCTGGTCAATATTAACAGGGTGCAGCGCAGGCTGTTGAAGATGTTTTACATATTGCAAG
 ACGACAAGGAAATCTGACTCTCCATTGAACAAAGACTTGGTAGAAAAAGTGACAAACGAATATAACGAA
 TCATTGCTCTACAGTCCAGAAGAACAAAAATACTTTTCAGTATTCGAGAGCCAATAGCAACAGAGTTT
 TCTCCAGCAGCCGTCAGCGTTGTTTCTCTTCAAAGTTTGTGTTGTTCTCGATGTTGGGATGCCTGCAT
 GGTGTGGATGGAGGAACGTCTTTTGTGTTTAAACGACGGAGCAATTGCTTCAATGATGATCAATAAGAA
 GATGAGCTTCGAAGTGTATTCTAGAGCAG

ACGCGTACGCGGCCGCTCGAGCAGAACTCATCTCAGAAGAGGATCTGGCAGCAATGATATCCTGGATT
 ACAAGGATGACGACGATAAGGTTTAA

Protein Sequence:

>MR212802 representing NM_001040395
 Red=Cloning site Green=Tags(s)

MTCYRGFLLGSCRRVAGGRAALRGSVSGADGRRHLGHGQPRELAGGGSPADGGFRPSRVVVVAKTTRYEF
 EQQRYRYAELSEEDLKQLLALKGSSYGLLERHHIHTKNVEHIIDSLRDEGIEVRLVKRREYDEETVRWA
 DAVIAAGDGTMLLAASKVLDRLKPVIGVNTDPERSEGLCLPVRYTHSFPEALRRFSRGEFRWLWRQRI
 RLYLEGTGINPTPVDLHEQQLSLNQHSRAFNIERAHDERSEASGPQLLPVRALNEVFIGESLSSRASYE
 ISVDDGPWEKQKSSGLNLCTGTGSKAWSFNINRVAAQAVEDVLIARRQGNLTLPLNKDLVEKVTNEYNE
 SLLYSPEEPKILFSIREPIANRVFSSSRQRCFSSKVCVRSRCWDACMVVDGGTSFEFNDGAIASMMINKE
 DELRTVILEQ

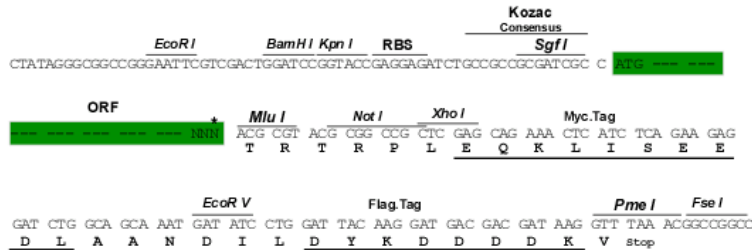
TRTRPLEQKLISEEDLAANDILDYKDDDDKV

Restriction Sites:

SgfI-MluI

Cloning Scheme:

Cloning sites used for ORF Shutting:



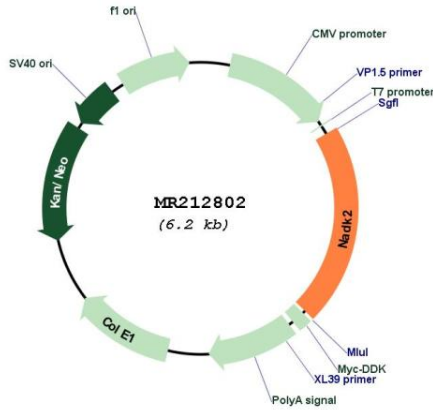
* The last codon before the Stop codon of the ORF

- ACCN:** NM_001040395
- ORF Size:** 1290 bp
- OTI Disclaimer:** The molecular sequence of this clone aligns with the gene accession number as a point of reference only. However, individual transcript sequences of the same gene can differ through naturally occurring variations (e.g. polymorphisms), each with its own valid existence. This clone is substantially in agreement with the reference, but a complete review of all prevailing variants is recommended prior to use. [More info](#)
- OTI Annotation:** This clone was engineered to express the complete ORF with an expression tag. Expression varies depending on the nature of the gene.
- Components:** The ORF clone is ion-exchange column purified and shipped in a 2D barcoded Matrix tube containing 10ug of transfection-ready, dried plasmid DNA (reconstitute with 100 ul of water).
- Reconstitution Method:**
1. Centrifuge at 5,000xg for 5min.
 2. Carefully open the tube and add 100ul of sterile water to dissolve the DNA.
 3. Close the tube and incubate for 10 minutes at room temperature.
 4. Briefly vortex the tube and then do a quick spin (less than 5000xg) to concentrate the liquid at the bottom.
 5. Store the suspended plasmid at -20°C. The DNA is stable for at least one year from date of shipping when stored at -20°C.
- RefSeq:** [NM_001040395.4](#), [NP_001035485.2](#)
- RefSeq Size:** 3665 bp
- RefSeq ORF:** 1293 bp
- Locus ID:** 68646
- UniProt ID:** [Q8C5H8](#)
- Cytogenetics:** 15 A1

MW: 48.8 kDa

Gene Summary: Mitochondrial NAD(+) kinase that phosphorylates NAD(+) to yield NADP(+). Can use both ATP or inorganic polyphosphate as the phosphoryl donor (By similarity).[UniProtKB/Swiss-Prot Function]

Product images:



Circular map for MR212802