

Product datasheet for MR212768

4933416C03Rik (NM_001161855) Mouse Tagged ORF Clone

Product data:

Product Type:	Expression Plasmids
Product Name:	4933416C03Rik (NM_001161855) Mouse Tagged ORF Clone
Tag:	Myc-DDK
Symbol:	4933416C03Rik
Mammalian Cell Selection:	Neomycin
Vector:	pCMV6-Entry (PS100001)
E. coli Selection:	Kanamycin (25 ug/mL)
ORF Nucleotide Sequence:	>MR212768 representing NM_001161855 Red=Cloning site Blue=ORF Green=Tags(s)

TTTTGTAATACGACTCACTATAGGGCGGCCGGAATTCGTCGACTGGATCCGGTACCGAGGAGATCTGCC
GCCCGATCGCC

ATGAGCAAAAGCCGAGATGAACCGCCTCACGAACTCGAGAACCAGTTCATACTGCGGCTGCCCCAGAAC
AGGCTTCGGCGGTACGGAAGATCATCCGTTCTGGAAATGCCGCCATGAGAGAGAACTAAAAATCGACTT
GTCTCCCGATTCACGCCGTGCCGTGTTTCAGGTAGATGGCGTCTCACTGTCTGCCAACTGTGCGATTTG
CCTTGTGTATTGGAAGCCTGAAAACGCACGATGGGAAAACCTTTATAAAACAGCCGATGTGTCCAGA
TGCTATTGTGCAGCGCCGATGATGGTGATCCCCACACGTCCCCAGAAGAGCCAGCTACCTCTGCTGGTGC
TACTGTAGTGGGAAACAAAAGGAAGCAGAGGGAAAATATATCTGGAAGCATGGCATTACTCCACCACTT
AAGAACGTCAGAAAGAAACGTTTTTCGAAACCAACAAAAGCCCGCGATATGAAGCAAGGCGAAGAAA
GCTGTAGGGCCTACATTGATCCAAAGATGTGGAAAAGGAAGTGAAGAGGCTGCTGCGCTCAGATGCTGA
AGCCATCAGCAGCCGATGGGAAGTCGTTGTTGATGATGAAACCAAGGCAGTACCAAGTCAAACCTGCACT
TCACACGTTCCGTTGCCCCCTGAAGCAGGTGATCATACCTCATCAGCATGTGCTATGCCTCAGAGCACAT
TCAGTGATTCCAGCAGTGGCAAAGATGATCCAGAGAATAAAGATGAGGAGGAGGAAGAAGAAAAAGAGGA
GAAGGAAGAAGAGGATGAGGATGAGGAGGATGAAGAGGAGGAAGAGGAAGAAGAGGAAGATGATTCTGAA
GAAGACCTGGAAAGAGAGCTACAAGCCAAGTTTATTGAGTTTAGCTTGTGTGAAGCTAATGAAAGTAGCA
GTTTCAGTAATTCTTGAATTGAAAGCTGATTCATTCCAAGGAGAGAAAACCTCCAAGAGATCCAGGCCAA
AGCACAGAGGCAGAAAAGATCTCCTCAGAAAATTGGAAAACCTGACCCCTAAGAGTCATTTCCAGTCTGTG
CTAGATCAGCTCAAGTTACAGGAGAAGCAGAAGTATGAACAGATCCTTTTTCTACAGGAACAACCTGAAGT
GTTTTTTGAAGAAG

ACGCGTACGCGGCCGCTCGAGCAGAAAACCTCATCTCAGAAGAGGATCTGGCAGCAATGATATCCTGGATT
ACAAGGATGACGACGATAAGGTTTAA



[View online »](#)

Protein Sequence: >MR212768 representing NM_001161855
 Red=Cloning site Green=Tags(s)

MSKSRDEPPHELENQFILRLPPEQASAVRKIIRSGNAAMREKLIKIDLSPDSRRAVVQVDGVSLSAKLVLDL
 PCVIGSLKTHDGKTFYKTADVSQLLCSADDGDPHTSPEEPATSAGATVVGNKKEAEGKYIWKHGITPPL
 KNVRKKRFRKPTKKPADMKQGEESCRAYIDSKDVEKEVKRLLRSDAEAISSRWEVVVDDDETKAVPSQTCT
 SHVPLPPEAGDHTSSACAMPQSTFSDSSSGKDDPENKDEEEEEEEKEEEEEDEEDEEEEEEEEDDSE
 EDLERELQAKFIEFSLCEANESSVILGIQKLIHSKERKLQEIQAKAQRQKDLLRKLENLTLKSHFQSV
 LDQLKLQEKQKYEQILFLQEQLKCFLLK

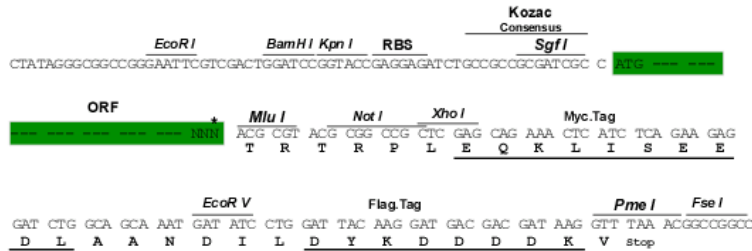
TRTRPLEQKLISEEDLAANDILDYKDDDDKV

Chromatograms: https://cdn.origene.com/chromatograms/mm9093_f11.zip

Restriction Sites: SgfI-MluI

Cloning Scheme:

Cloning sites used for ORF Shuttling:



* The last codon before the Stop codon of the ORF

ACCN: NM_001161855

ORF Size: 1134 bp

OTI Disclaimer: The molecular sequence of this clone aligns with the gene accession number as a point of reference only. However, individual transcript sequences of the same gene can differ through naturally occurring variations (e.g. polymorphisms), each with its own valid existence. This clone is substantially in agreement with the reference, but a complete review of all prevailing variants is recommended prior to use. [More info](#)

OTI Annotation: This clone was engineered to express the complete ORF with an expression tag. Expression varies depending on the nature of the gene.

Components: The ORF clone is ion-exchange column purified and shipped in a 2D barcoded Matrix tube containing 10ug of transfection-ready, dried plasmid DNA (reconstitute with 100 ul of water).

Reconstitution Method:

1. Centrifuge at 5,000xg for 5min.
2. Carefully open the tube and add 100ul of sterile water to dissolve the DNA.
3. Close the tube and incubate for 10 minutes at room temperature.
4. Briefly vortex the tube and then do a quick spin (less than 5000xg) to concentrate the liquid at the bottom.
5. Store the suspended plasmid at -20°C. The DNA is stable for at least one year from date of shipping when stored at -20°C.

RefSeq: [NM_001161855.1](#), [NP_001155327.1](#)

RefSeq Size: 2254 bp

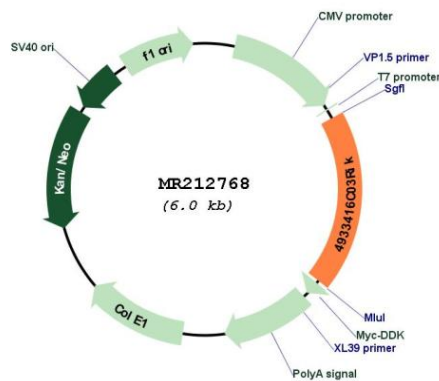
RefSeq ORF: 1137 bp

Locus ID: 619332

Cytogenetics: 10 D2

MW: 42.8 kDa

Product images:



Circular map for MR212768