

## Product datasheet for MR212687

### Prr23a1 (NM\_001134660) Mouse Tagged ORF Clone

#### Product data:

**Product Type:** Expression Plasmids  
**Product Name:** Prr23a1 (NM\_001134660) Mouse Tagged ORF Clone  
**Tag:** Myc-DDK  
**Symbol:** Prr23a1  
**Synonyms:** EG623166; Gm6400; Prr23a  
**Mammalian Cell Selection:** Neomycin  
**Vector:** pCMV6-Entry (PS100001)  
**E. coli Selection:** Kanamycin (25 ug/mL)  
**ORF Nucleotide Sequence:** >MR212687 representing NM\_001134660  
 Red=Cloning site Blue=ORF Green=Tags(s)

TTTTGTAATACGACTCACTATAGGGCGCCGGGAATTCGTCGACTGGATCCGGTACCGAGGAGATCTGCC  
 GCC**CGGATCGCC**

ATGCTGCGCACCAGGCCCGCAGCCCCAGCGCCAACCCCGCGCCCTGCTGGTCACCGCAGACACCAGCAC  
 CCAGCCCTGCCAAGCGCCGCGCCTCCACCAGGAGCCCGCTGCCAGAGCCCTGGCTCAGCCAGAGCT  
 GGAAGCGCCCGCCGAGCCCGCTAGCAGCGCGCTCACCTCCGTGGTGTTCCTGGCCCGCGCTCTGCCCTG  
 CAGTTGCCCTGGATGGCATCGACCTGCTGTTGGAGCCTGAGCCACCTCGGTCTGCAAGTGTCGCTCC  
 AAGAACACACCATCCTCCTGGTCCCGAAGGACTCATGACACAACCCAGCCAGGACAGCCTGGATTCGT  
 GGCCATCAGCCACAGGGAGCCGCTGCCAGGACGGGCCCCAGGATCATCTAGTCGGTCTCCAGGAGGAA  
 ACCTTCTGTGAGTACTTCTACCAAGAAGATGTCTGTGATGAGGATGCAGACTTGAATTGCTGGAACCT  
 GGGCTAGGCTCCAGATGATCAGGCAATGGGAACCTTTCCTCCATCCCAGGGGTGCCAGTCCTTTGTT  
 GCAGGAACAAGTCCCAGGGCCTTCCACTGGAGCAGAGCGATATTCTCCTAGGTTTATCTGGGAACGGAC  
 AGCTACCTGCTGGGACCCCTCCCTGGCTCACCCTGCAGCCTCTGCCTCCATCTCCTTCCAGAGTCCCC  
 AAGAGCAGCTTCCGCCACGCCCTCATGCTCTCCCGGGCTCCTGCAAGGCCCGGAAGCGACTGGTCTA  
 TGAC

**ACGCGT**ACGCGGCCGCTCGAGCAGAAACTCATCTCAGAAGAGGATCTGGCAGCAAATGATATCCTGGATT  
 ACAAGGATGACGACGATAAGGTTTAA



[View online »](#)

**Protein Sequence:** >MR212687 representing NM\_001134660  
 Red=Cloning site Green=Tags(s)

MLRTRPRSPSANPAPCWSPQTPAPSPAKRRRLHQEPACPEPLAQPELEAPAEPASSALTSVVFLAAGSAL  
 QLPLDGDIDLLLEPEPTSVLQVSLQEHTILLVPEGLMTQPQPGQPGFVAISPOGAAAQDGPQDHLVGLQEE  
 TFCEYFYQEDVCDEDADLELLEPWARPPDDQANGNFSSIPGVPSPLLQEQVPGPSTGAERYSPRF IWELD  
 SYLLGPLPGSPLQPLPPSPSQPQEQLPPRPPCSPRAPCKARKRLVYD

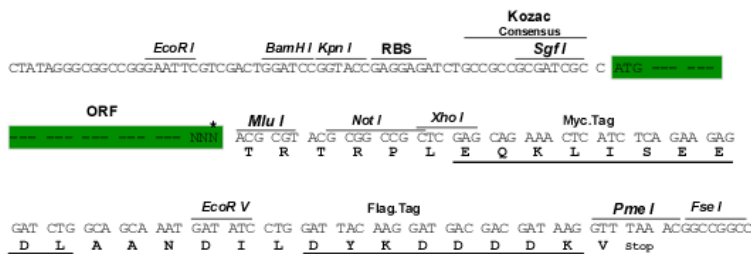
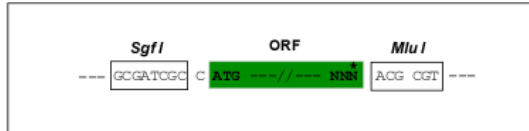
TRTRPLEQKLISEEDLAANDILDYKDDDDKV

**Chromatograms:** [https://cdn.origene.com/chromatograms/mm9093\\_g03.zip](https://cdn.origene.com/chromatograms/mm9093_g03.zip)

**Restriction Sites:** SgfI-MluI

**Cloning Scheme:**

Cloning sites used for ORF Shuttling:



\* The last codon before the Stop codon of the ORF

**ACCN:** NM\_001134660

**ORF Size:** 774 bp

**OTI Disclaimer:** The molecular sequence of this clone aligns with the gene accession number as a point of reference only. However, individual transcript sequences of the same gene can differ through naturally occurring variations (e.g. polymorphisms), each with its own valid existence. This clone is substantially in agreement with the reference, but a complete review of all prevailing variants is recommended prior to use. [More info](#)

**OTI Annotation:** This clone was engineered to express the complete ORF with an expression tag. Expression varies depending on the nature of the gene.

**Components:** The ORF clone is ion-exchange column purified and shipped in a 2D barcoded Matrix tube containing 10ug of transfection-ready, dried plasmid DNA (reconstitute with 100 ul of water).

**Reconstitution Method:**

1. Centrifuge at 5,000xg for 5min.
2. Carefully open the tube and add 100ul of sterile water to dissolve the DNA.
3. Close the tube and incubate for 10 minutes at room temperature.
4. Briefly vortex the tube and then do a quick spin (less than 5000xg) to concentrate the liquid at the bottom.
5. Store the suspended plasmid at -20°C. The DNA is stable for at least one year from date of shipping when stored at -20°C.

**RefSeq:** [NM\\_001134660.1](#), [NP\\_001128132.1](#)

**RefSeq Size:** 1059 bp

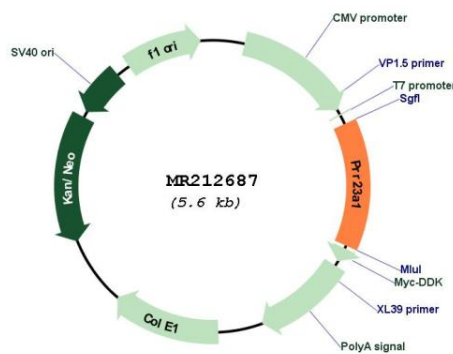
**RefSeq ORF:** 777 bp

**Locus ID:** 623166

**Cytogenetics:** 9 E3.3

**MW:** 27.9 kDa

**Product images:**



Circular map for MR212687