

## Product datasheet for **MR212529**

### Gm436 (NM\_001085504) Mouse Tagged ORF Clone

#### Product data:

Product Type:	Expression Plasmids
Product Name:	Gm436 (NM_001085504) Mouse Tagged ORF Clone
Tag:	Myc-DDK
Symbol:	Gm436
Mammalian Cell Selection:	Neomycin
Vector:	pCMV6-Entry (PS100001)
E. coli Selection:	Kanamycin (25 ug/mL)
ORF Nucleotide Sequence:	>MR212529 representing NM_001085504 Red=Cloning site Blue=ORF Green=Tags(s)

TTTTGTAATACGACTCACTATAGGGCGGCCGGAATTCGTCGACTGGATCCGGTACCGAGGAGATCTGCC  
GCC**CGCATCGCC**

ATGGCAGTTCTGTGTCTGCTACTGCTAGTTGGGCTGCCTACATTCTTACTGGGAGTCTTTATATGGGCTG  
TGGTAAAGCATTTTATCACAGCAGAAATTCCTTCTTTACAGCATCCAGTCAAGTTCAAGTGTATGCA  
TTGTCTGATGCTCTTCATAATGGCCTTGGGTAATATATGCAGAAGCTGAGAATCTGCTCTCTGCCAGC  
TTCATTATATTTATGCATGATTTAGTGGCCATAAGGAAGGACCTACCTTAGTGGTGACAAACATGCATT  
TGGGGACAATCCCTGTGAGACTGTTCCAGCCCAAGGCAGTGTCTCCAACTCCGGAGGGGCATCATCTT  
CTACCATGGAGGGGCTGCAGCTTTTGGTAGCCTGGACATTTACCATAACCTGTGCAGTTTCTGGTCCGG  
GAGACAGACTCAGTGTTGCTTTAGTGGGTACCGCAAGCTTCCTAAGCATCATCACCTGCTGCTCTTA  
ATGATTGCCTGAGTGCCACCATCTTGTCTGAAGGCCCTGAAACTTATGGAGTGGACCATCTCGGGT  
GGTGCTCTGTGGAGATAGTTTGGAGGTTGGGTTGTAGCCTCCATCTCCAGACCTTGGTCAGTACCCCT  
AGTCTCCCCAGATCCGGGCTCAAGTCTTGATTATCCAATTTGCAGGTCATTAATTTCTTTTACCAT  
CTCTACAACAGAATAAAAAATCCCACTTCTTCCAAAGACTTGTGATTATATTTGTGTGTAACACTT  
GGCCATTGATCTCTTGGGGAGATTCCATGCTTACAGGTGCTGTTATACCTCTGGACAAGTGAAGAAA  
TACAGAAAATGGCTCAGCTCTGACAATATCCAGAAGGCTCTGGAGCCAAGACACACAACCTGAGTTTC  
TTGGACATTTTAATGAGGCTGCCTATCTAGAAACAAAACACATTTTAATCCAGAAATTTACCTATCAT  
CGCAGATGATAAGACCATTGCTCAGCTTCTGAGGCATTCCTAGTGAGCTGTGAGTATGACATAGTTCGT  
GATGACACCTTGCTTTACAAGAAGCGCTTGAAGATCAGGGAGTTCCTGTGACCTGGCACCATGTGATGG  
ATGGCTTTTCATGGATGCGTCCTTCTGTTGATAGAAAGTTTCTATCTTTCCCTGCTCCATAAAAGTAGT  
AAACACTGTTGTGAGTTGCATAAAAAGCATA

**ACGCGT**ACGCGGCCGCTCGAGCAGAACTCATCTCAGAAGAGGATCTGGCAGCAAATGATATCTGGATT  
ACAAGGATGACGACGATAAGGTTTAA



[View online »](#)

**Protein Sequence:** >MR212529 representing NM\_001085504

Red=Cloning site Green=Tags(s)

MAVLCLLLLVGLPTFLLGVFIWAVVKHFIITAEIPSSLQHPVKFRCHMLMLFIMALGNILQKLRICSLPS  
FIIFMHDLPVIRKDP TLVVTNMHLGTIPVRLFQPKAVSSKLRRGIIFYHGGA AFGSLDIYHNLCSFLVR  
ETDSVLLSVGYRKLPKHHHPAALNDCLSATILFLKALETYGVDP SRVL CGDSFGGWVVASISQTLVSTP  
SLPQIRAQDLIYPIQLQVINFLPLSLQQNKNIPLSKDLLIIFVCNYLAIDL SWGDSMLTGAVIPLDKWKK  
YRWKLSQDNIPRRLWSQDTQPEFLGHFHEAAYLETKHIFNEISPIIADDDKTIQLPEALVSECYD IVR  
DDTLIYKKRLDEOGVPVTVHHVMDDGFHGCVLFDPRKFLFSPCKSIKVVNTVVSICKSL

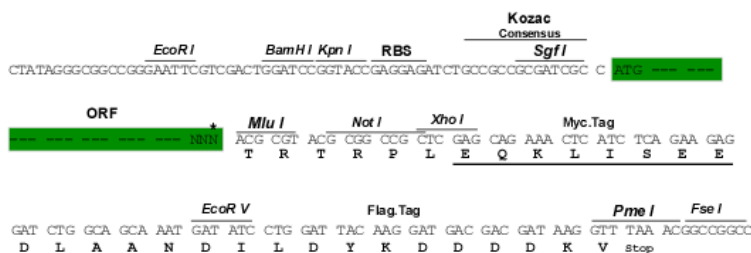
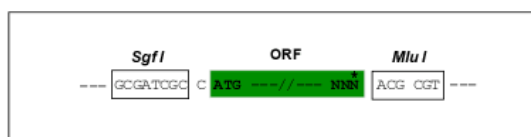
TRTRPLEOKLISEEDLAANDILDYKDDDDKV

**Chromatograms:** [https://cdn.origene.com/chromatograms/mm9064\\_g08.zip](https://cdn.origene.com/chromatograms/mm9064_g08.zip)

**Restriction Sites:** Sgfl-MluI

### Cloning Scheme:

Cloning sites used for ORF Shuttling:



\* The last codon before the Stop codon of the ORF

ACCN: NM 001085504

ORF Size: 1221 bp

**OTI Disclaimer:** The molecular sequence of this clone aligns with the gene accession number as a point of reference only. However, individual transcript sequences of the same gene can differ through naturally occurring variations (e.g. polymorphisms), each with its own valid existence. This clone is substantially in agreement with the reference, but a complete review of all prevailing variants is recommended prior to use. More info

**OTI Annotation:** This clone was engineered to express the complete ORF with an expression tag. Expression varies depending on the nature of the gene.

**Components:** The ORF clone is ion-exchange column purified and shipped in a 2D barcoded Matrix tube containing 10ug of transfection-ready, dried plasmid DNA (reconstitute with 100 ul of water).

**Reconstitution Method:**

1. Centrifuge at 5,000xg for 5min.
2. Carefully open the tube and add 100ul of sterile water to dissolve the DNA.
3. Close the tube and incubate for 10 minutes at room temperature.
4. Briefly vortex the tube and then do a quick spin (less than 5000xg) to concentrate the liquid at the bottom.
5. Store the suspended plasmid at -20°C. The DNA is stable for at least one year from date of shipping when stored at -20°C.

**RefSeq:** NM\_001085504.1, NP\_001078973.1

**RefSeq Size:** 1224 bp

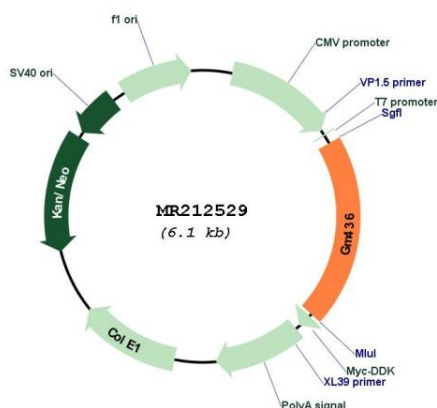
**RefSeq ORF:** 1224 bp

**Locus ID:** 230890

**Cytogenetics:** 4 E1

**MW:** 45.9 kDa

### Product images:



Circular map for MR212529