

Product datasheet for **MR212507**

Gm5346 (NM_001025240) Mouse Tagged ORF Clone

Product data:

Product Type:	Expression Plasmids
Product Name:	Gm5346 (NM_001025240) Mouse Tagged ORF Clone
Tag:	Myc-DDK
Symbol:	Gm5346
Synonyms:	EG384813
Mammalian Cell Selection:	Neomycin
Vector:	pCMV6-Entry (PS100001)
E. coli Selection:	Kanamycin (25 ug/mL)



[View online »](#)

ORF Nucleotide Sequence:

>MR212507 representing NM_001025240
 Red=Cloning site Blue=ORF Green=Tags(s)

TTTTGTAATACGACTCACTATAGGGCGGCCGGAATTCGTCGACTGGATCCGGTACCGAGGAGATCTGCC
 GCC**CGGATCGCC**

ATGACTGGGGCTAAGGTCGTGGTCCATAAAAGGAACATGTTCTTAAGTTCTGCCTGTGGACAATGTTCT
 TCTTCTCTGCATATTCACCAATTGGACATGCTAAGTACAGTAGCCTTCCAGAAGTAGTGACACCCTTGAG
 GGTCACTGTCACTAGAGGAAATAATAGTTCACCAGGTTGGCTGTCTATAGCCTGAGCATTGGGGGGCAG
 AGGCACATAATCACTATGAAACCCAAGGAAAACCTGATATCCAGAAAACCTCTTATTATTCACCTTATAGTG
 ACCAAGGTGATCTCCTTGAAAGAACATCCTTTGTGCAGAAATGACTGCTACTACCATGGCTATGTGGATGA
 GGACCCAGAGTCCCTGGTCATTGTCAACACCTGTTTTGGAAGTTTGAAGGCACACTAGAAAATAATGGC
 ACAATTTATGAAATCATGCCAGGAGCAAAACGTCAACATTTGAACATCTGGCTATAAAATGGACAGTG
 GGGAGTCAGAACCATCTCCCATGAGATGTGGGTTATCAGAAGAGGAAATAGCACAACAAATGAACCTTCA
 GAAAGCAATGCCTCCACTCTTTTGCAAAATCCCCTATGAGAATTGGTGGACCCATCACAGGTTTATTGAT
 TATTTTGTAGTAATAGATCATAATTGCTATGTTTATAGAAAATAACAATACCACGACTTGTATTCAAGATA
 TGGTGAAGTAGTCAATGGAATAAATGGTTATTTTCTTCAAATACAGACTGATGTGGTTTTAACCAAAGT
 TGAAGTTTGGAGTCAAAAATAATCTTATCAATGTAGAAGAAGAAATGTCAGCGGCCCTAGATGCATTCTGT
 AGTTGGAAGAAAATGCGATTGGCAATCGTGTTAGACATGATATCATACACCTTTTTGTCAGACACAATT
 ATGTTAAATTTTTAGGTATGGCTAAATAGGTCAAGTTTGTAACTCTTAACTGTGCAGTTAACAGTTT
 TCTTACTGATTCGTTATCATATCTGGCATTTCATCGTAGCACATGAGATGGGTATAAATTGGGCATGAAG
 CATGATGGAAGTGCATGTACATGTGGGTTACATACATGCATAATGTACCCATATGCATATATTTCTCAA
 AATTCAGTAACGTAGTTATGAAGAAATGTTTTCAAGTTGTCAACAGAAGAAGTTGCTTGTACAATTTCC
 AGATGCCTAAAAACAATAACACTGGTGGCAGCATGTGTGGCAATAAATTGGTTGAAGAAGGAGAGCAG
 TGTGATTGTGGAACTCTGAATCCTGTTTACAAGATCCTTGCTGTAGCAGCGACTGTGTTCTCAAACCTG
 GTGCTAAATGTGCTTTTGGACTGTGTTGCAAAGATTGCCAGTTCCTTCAAACAGGCACTGTGTGTAGACA
 AGAGAAAATGAGTGTGACCTTCCAGAGTGGTGAATGGAACCTCAGGTGAGTGTCCAGGAGATGTGTAT
 AAAGCAGATGGAATCCGTTGCAGTCGTGGTGGTTATTGCTATAAAATGGAATGTCAACGACATGATAGGC
 AGTGTCCGGAGATTTTTGGCAAGAGAAGTAGAAGTGCAGATGAAATTTGCTACATGGAAATGAACAGACG
 TGGTGACCGCTTTGGAACTGTGGCAATGATAGCTCTATGTATAAAAGATGCGAGCTCACTGATGTACTC
 TGTGGGCGAATTCAGTGTGAGAATGTGATAAACTTCCCAAAGGAGAAACCATGAGACAGTGCATTATA
 CTCACCTCAGTAATAACACCTGCTGGACGATGGACTATCATTGTTGGGATCACCATAGATGACGTTGGAGC
 AGTGAGCGATGGCACACCTTGTGCTCCAGACCATATATGTCTCGACAGAAAGTGTGTGAGCAAGTCTGTT
 CTGGTAAGTAACTGTACACCACACTTATGCCATATGCAAGGAGTCTGCAACAATAAACACCACTGCCATT
 GTACTAACACATGGGAACCACCGGACTGTCAACTACATGGCCATGGAGGTAGTATAGACAGTGGACCACC
 TCCAGTGCCTTTATCTCCTTCCAATTGGAGTATGTACTTCTAGCTTTTATAATTATGTATGTGCTTGGC
 TTTATTGCTTTGTATGGCATTGCGAATTAAGGAAAAAACTCCTAAAAGAATCGGTGCCAGAATCAGATT
 CTGGTGATAAAAAATCTCACTAGAAAACAACAGGATCTC

ACGCGTACGCGGCCGCTCGAGCAGAACTCATCTCAGAAGAGGATCTGGCAGCAAATGATATCCTGGATT
 ACAAGGATGACGACGATAAGGTTTAA

Protein Sequence: >MR212507 representing NM_001025240
 Red=Cloning site Green=Tags(s)

```

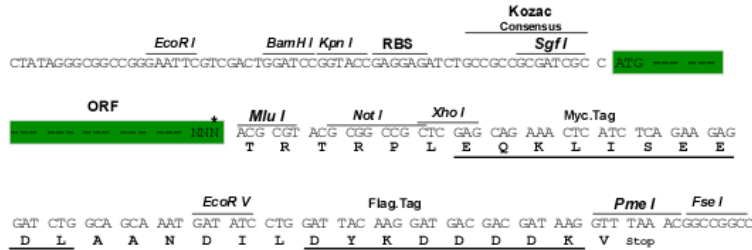
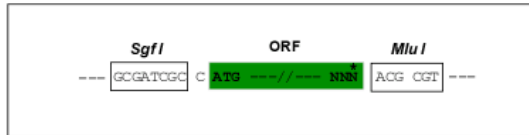
MTGAKVVVHKRMFLKFCLWTFMFFFSAYSPIGHAKYSSLPEVVTPLRVTVTRGNSSPGWLSYLSIGGQ
RHIITMKPKENLISRNFLLFTYSDQGDLEEHPFVQNDCCYYHGYVDEDPESLVIVNTCFGSLQGTLEING
TIYEIMPRSKTSTFEHLAYKMDSGESESPMRCGLSEEEIAQQMNLQESNASTLLQIPYENWTHHRFID
YFVVIDHNCYVHRNNTTTCIQDMLQVNGINGYFLQIQTDVVLTKEVWSQNINVEEEMSAALDAFC
SWKKNAIGNRVRHDIHLFVRHNYVKFLGMAKLGQVCLTLNCAVNSFLTDSL.SYLAFIVAHEMGNLGMK
HDGSACTCGLHTCIMYPYAYISPKFSNCSYEEMFVSVNRRSCLYNIPDALKTITLVPTMCGNNLVEEGEQ
CDCGNSESLQDPCCSSDCVLPKPAKAFGLCCKDCQFLQGTGTVCRQEKNEDLPEWCNGTSGECPGDVY
KADGIRCSRGGYCYKMECQRHDRQCREIFGKRSR.SADEICYMEMNRRGDRFGNCGNDSSMYKRC.LTDVL
CGRIQCENVIKLPQRNHETVHYTHFSNNTCW.TMDYHFGITIDDDV.GAVSDGTPCAPDHICLDRKCVKSV
LVS.NCTPHLCHMQGVCNNKHCHCTNTWEPPDCQLHG.HGGSIDSGPPP.VPLSPSNWSMYFLAFIIMYVLG
FIALYGI.RELRKLLKESVPE.SDSGDKNLTRKQQDL
  
```

TRTRPLEQKLISEEDLAANDILDYKDDDDKV

Restriction Sites: SgfI-MluI

Cloning Scheme:

Cloning sites used for ORF Shuttling:



* The last codon before the Stop codon of the ORF

ACCN: NM_001025240

ORF Size: 2208 bp

OTI Disclaimer: The molecular sequence of this clone aligns with the gene accession number as a point of reference only. However, individual transcript sequences of the same gene can differ through naturally occurring variations (e.g. polymorphisms), each with its own valid existence. This clone is substantially in agreement with the reference, but a complete review of all prevailing variants is recommended prior to use. [More info](#)

OTI Annotation: This clone was engineered to express the complete ORF with an expression tag. Expression varies depending on the nature of the gene.

Components: The ORF clone is ion-exchange column purified and shipped in a 2D barcoded Matrix tube containing 10ug of transfection-ready, dried plasmid DNA (reconstitute with 100 ul of water).

- Reconstitution Method:**
1. Centrifuge at 5,000xg for 5min.
 2. Carefully open the tube and add 100ul of sterile water to dissolve the DNA.
 3. Close the tube and incubate for 10 minutes at room temperature.
 4. Briefly vortex the tube and then do a quick spin (less than 5000xg) to concentrate the liquid at the bottom.
 5. Store the suspended plasmid at -20°C. The DNA is stable for at least one year from date of shipping when stored at -20°C.

RefSeq: [NM_001025240.2](#)

RefSeq Size: 2211 bp

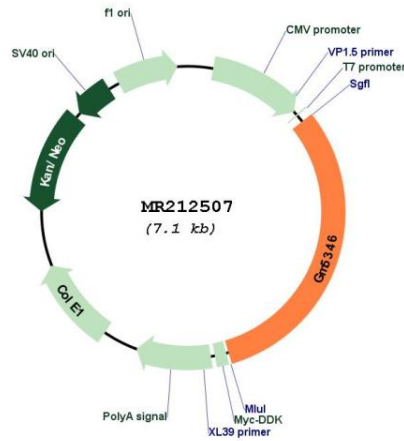
RefSeq ORF: 2211 bp

Locus ID: 384813

Cytogenetics: 8 A4

MW: 83.4 kDa

Product images:



Circular map for MR212507