

Product datasheet for **MR212506**

Ncoa7 (NM_001111267) Mouse Tagged ORF Clone

Product data:

Product Type: Expression Plasmids
Product Name: Ncoa7 (NM_001111267) Mouse Tagged ORF Clone
Tag: Myc-DDK
Symbol: Ncoa7
Synonyms: 9030406N13Rik
Mammalian Cell Selection: Neomycin
Vector: pCMV6-Entry (PS100001)
E. coli Selection: Kanamycin (25 ug/mL)
ORF Nucleotide Sequence: >MR212506 representing NM_001111267
Red=Cloning site Blue=ORF Green=Tags(s)

TTTTGTAATACGACTCACTATAGGGCGCCGGAATTCGTCGACTGGATCCGGTACCGAGGAGATCTGCC
GCC**CGATCGCC**

ATGAGAGGCAGAGGACTGCCCTGGACATTCAGATTTTCTATTGTGCCAGGCCTGACCAAGAGCCTTTTG
TGAAGATCATCACAGTTGAGGAGGCAAACGCAGGAAGAGCACTTGCAGCTACTACGAGGAAGAGGAAGA
AGAGGAAGAGGGACTGCCTATCCTACAGCCCCACAGTGCCTCCTGGAAAACATGCACATCGAACAGCTG
GCCCGACGACTTCCAGCCAGGGTACAAGGCTATCCATGGAGACTGGCCTACAGCACATTAGAGCATGGAA
CGAGCTTGAAGACTCTCTACAGAAATCAGCATCTCTAGATAGTCCTGTTCTTTTGGTCATCAAAGACAT
GGATAACCAGATATTTGGGCATATGCAACTCATCCCTTCAAGTTCAGTGACCACTATTATGGCACAGGC
GAAACGTTTCTCTACACCTTTAGTCCGAATTTCAAGGCTTTAAGTGGAGTGGAGAAAACATATTTTAA
TCAATGGAGACATAAGTTCTTTAGAAGTGGTGGTGGAGGGGACGATTTGGTCTGTGGCTAGATGCTGA
TTTATATCATGGACGCAGCAACTCTGCAGTACTTTTAAATGATATCCTTTCAAAAAAAGAACTTC
ATAGTTCAGGACCTAGAGGTATGGACATTTGAG

ACGCGTACGCGGCGCTCGAGCAGAAACTCATCTCAGAAGAGGATCTGGCAGCAATGATATCCTGGATT
ACAAGGATGACGACGATAAGGTTTAA



[View online »](#)

Protein Sequence: >MR212506 representing NM_001111267
 Red=Cloning site Green=Tags(s)

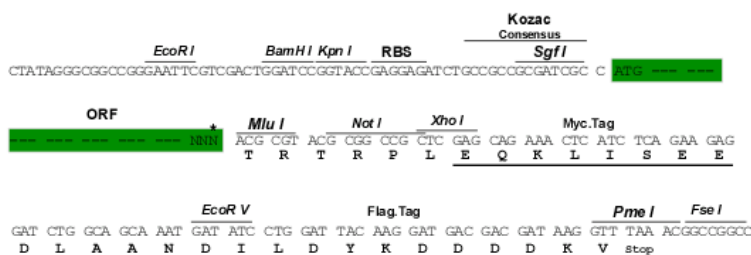
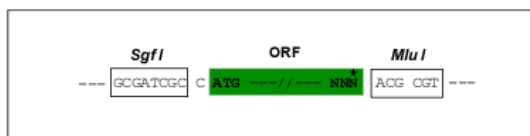
MRGRGLPLDIQIFYCARPDQEPFVKIITVEEAKRRKSTCSYEEEEEEEEGLPILQPHSALLENMHIEQL
 ARRLPARVQGYPWRLAYSTLEHGTSLKTLYRKSASLDSPVLLVIKMDNQIFGAYATHPFKFS DHYYGTG
 ETFLYTFSPNFVKVFKWSGENSYFINGDISSLELGGGGGRFGLWLDADLYHGRSNSCSTFNN DILSKKEDF
 IVQDLEWTFE

TRTRPLEQKLISEEDLAANDILDYKDDDDKV

Restriction Sites: Sgfl-MluI

Cloning Scheme:

Cloning sites used for ORF Shuttling:



ACCN: NM_001111267

ORF Size: 663 bp

OTI Disclaimer: The molecular sequence of this clone aligns with the gene accession number as a point of reference only. However, individual transcript sequences of the same gene can differ through naturally occurring variations (e.g. polymorphisms), each with its own valid existence. This clone is substantially in agreement with the reference, but a complete review of all prevailing variants is recommended prior to use. [More info](#)

OTI Annotation: This clone was engineered to express the complete ORF with an expression tag. Expression varies depending on the nature of the gene.

Components: The ORF clone is ion-exchange column purified and shipped in a 2D barcoded Matrix tube containing 10ug of transfection-ready, dried plasmid DNA (reconstitute with 100 ul of water).

Reconstitution Method:

1. Centrifuge at 5,000xg for 5min.
2. Carefully open the tube and add 100ul of sterile water to dissolve the DNA.
3. Close the tube and incubate for 10 minutes at room temperature.
4. Briefly vortex the tube and then do a quick spin (less than 5000xg) to concentrate the liquid at the bottom.
5. Store the suspended plasmid at -20°C. The DNA is stable for at least one year from date of shipping when stored at -20°C.

RefSeq: [NM_001111267.2](#), [NP_001104737.1](#)

RefSeq Size: 2783 bp

RefSeq ORF: 666 bp

Locus ID: 211329

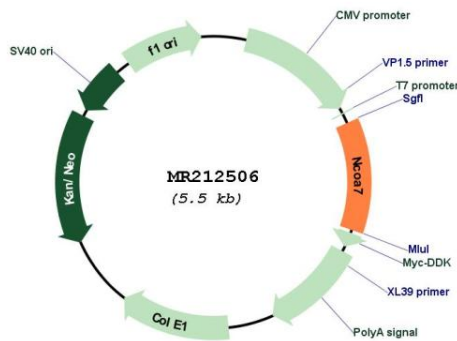
UniProt ID: [Q6DFV7](#)

Cytogenetics: 10 A4

MW: 25.9 kDa

Gene Summary: Enhances the transcriptional activities of several nuclear receptors. Involved in the coactivation of different nuclear receptors, such as ESR1, THRβ, PPARγ and RARA (By similarity).[UniProtKB/Swiss-Prot Function]

Product images:



Circular map for MR212506