

Product datasheet for **MR212502**

Ncoa7 (NM_172495) Mouse Tagged ORF Clone

Product data:

Product Type:	Expression Plasmids
Product Name:	Ncoa7 (NM_172495) Mouse Tagged ORF Clone
Tag:	Myc-DDK
Symbol:	Ncoa7
Synonyms:	9030406N13Rik
Mammalian Cell Selection:	Neomycin
Vector:	pCMV6-Entry (PS100001)
E. coli Selection:	Kanamycin (25 ug/mL)



[View online »](#)

ORF Nucleotide
Sequence:

>MR212502 representing NM_172495
Red=Cloning site Blue=ORF Green=Tags(s)

TTTTGTAATACGACTCACTATAGGGCGGCCGGGAATTCGTGCGACTGGATCCGGTACCGAGGAGATCTGCC
GCC**CGCATCGCC**

ATGGATACTAAGGAAGAGAAGAAGGAACAGAAGGAACGGAACAGAGTTATTTTGTAGACTAAAAAGA
AAAAACAAGCCAAACAAAATGCAGAGATAGTTTCACTGCGTCCTCGAAGAGTCGTTCCGGGAAAGATGA
TGCTAATTCAGACATTTTGAACAAGACAAAGTTCAACGTTACAGCAGAGGGGGACCATAGCACTGATGAC
AAAAAGAAGAGAAAAAGTAACCAAGTTAAAGGAAATCAGGCGCACGGAACGAAGAGATACTACAGTGTTG
ATGACAATCAAAACAAAACACTCATGATAAAAAAGAGAAGAAGATGATGGTCCAAAAGCCACAGGGCACCAT
GGAATACACTGCTGGAAGCCAGGACACCCTCAACTCTGTTGCACTGAAGTTAACGTCACCTCCAATAAA
TTAGTGGAAATGAATAAACTCTTACACACACTATTGTTCCAGGCCAGGTCTGTTGTGCCAGATGCCA
ACATCTCTTCTAGTACCATACAGCTTTCTTCCATCCACCCTGGTCTACTGTCTCTCCATCATCATCAGA
TGCAGAGTATGATAAGCTGCCTGATGCAGATTTAGCAAGAAAGGCCTTAAACCCATCGAGAGGGTCTTA
TCATCTACTTCCGAAGAAGATGAGCCAGGTGTTGTAAAATTCCTCAAAATGAACTGTCGCTACTTCACTG
ATGGAAAGGGTGTGGTTGGGGGTGTCATGATTGTCACCTAACAACATCATGTTTGACCCTCATAAGTC
CGATCCCTTAGTGATTGAAAACGGTTGCGAAGAATATGGTCTCATCTGCCCATGGAAGAGGTGGTCTCC
ATTGCCCTGTACAGTGACATATCCACATGAAGATCAAAGACGCCTTGCCATCTGACCTACCTCGGGATC
TTTGTCTCTGTACAGGCCTGGAGAATGGGAGGACCTGGCTTCCAGAGAAAGATATCAATCCATTCAGTAA
ATTCAGTCCATCAACAAGGAAAAACGACAGCAGAATGGGAGAGGACCTTGTCTTAGATGCCAAATCA
GTGCGCTCTCTGAGGAGTCAACTGAACGTAAGTGCACACGCATAGAGCCCCAGACAACCTGAATTGT
GGAAATTAAGAATCTGCAATCTTCCAGGGGAACAACCAAGTGAAGTCTCCCTCAGTACCCACAGCAT
CGGTGCTGCCTTGGAACTACAGCCAAAGAAAAGTGTCTTTTAAAGGAGATGAGGACTTTGTTGACTTG
GAAGAAGTCTTCTCAACCTGAGAGTGAATCAACAAGGAGATGCCACGAAAGAAATGTCTTCTCTATG
ACCAAAAGAAGGATGGGCCGCATACAGTCACTGTCTGCAAGAAGGGGCACGTGCAGTACAGCCAGGAAGT
TATGGGACCAGAGAGTGATACTGAAGTGAAGGGAGCCCTAGATCTAGAACTGCTGAGAAGCAAGATGAA
GCCCCAGAAGTAGACAAACACTCTGGATCCCCAGAAAACCTGGGGAAAGCACGCTGAATATACACGAAG
ATCTAGATAAAATTAACCTCATTGAATTTTACCTAAATAAAAAACAAGGAAGGGTACAGCTGTTAGAAAA
TGTGCAGAAGTACAGGTTAAGTGACCGCAAAAGTATTGAACCAGGAGGAATAGACATCACACTTAGTAGC
TCTCTTCCCAAGCAGGTGATCCCCACCTGAGGACAACAAGAGCCAGGTACACTCTGGGTAAGGGGG
GAGAAACTCTGCCCTGAACTAGATCCTAGTGCAGAGGAAACTGTAATTAACAATAAAGAGGTTCTGGA
TTCTTTGGGATCATCTCTAGACAAGATGTGTCACAGTGCACAGATGGATAACAATCTGAGATTCAGTTA
TGGCTGTTAAAGAGAATTCAGGTACCAATTGAAGATATACTTCCCTCAAAAGAAGAGAAGAGTAAGACCC
CGCCCATGTTTCTGTGCATCAAAGTGGGAAAGCCAATGAGAAAATCCTTTGCCAGTACACCCGCCACCAT
GGTTCAGCAGTATAGCAAGAGAAGAAAGCAGCCTGAATACTGGTTTGCTGTTCCCGGGAGAGGGTGGAT
CACTTGTACACCTTCTTTGTTTCAAGTGGTCTCTGATGTCTATGGGAAAGATGCCAAGGAGCAAGGCTTTG
TGGTGGTGGAGAAGGAAGAGCTGAACATGATCGACAATTTCTTCAAGTGAAGGAGGAGCAAGGAGGAG
GATCATCACAGTTGAGGAGGCAAAACGCAGGAAGAGCACTTGCAGCTACTACGAGGAAGAGGAAGAAGAG
GAAGAGGGACTGCCTATCCTACAGCCCCACAGTGCACCTCTGAAAACATGCACATCGAACAGCTGGCCC
GACGACTTCCAGCCAGGTACAAGGCTATCCATGGAGACTGGCCTACAGCACATTAGAGCATGGAACGAG
CTTGAAGACTCTCTACAGGAAATCAGCATCTCTAGATAGTCTGTTCTTTTGGTCACTAAAGACATGGAT
AACCAGATATTTGGGGCATATGCAACTCATCCCTTCAAGTTCAGTGACCACTATTATGGCACAGGCGAAA
CGTTTCTCTACACCTTCTAGTCCGAATTTCAAGGCTTTAAGTGGAGTGGAGAAAACATATTTTATCAA
TGGAGACATAAGTTCTTTAGAAGTGGTGGTGGAGGGGACGATTTGGTCTGGCTAGATGCTGATTTA
TATCATGGACGCAGCAACTCTTGCAGTACTTTAATAATGATATCCTTTCAAAAAAGAAGACTTCATAG
TTCAGGACCTAGAGGTATGGACATTTGAG

ACGCGTACGCGGCCGCTCGAGCAGAAACTCATCTCAGAAGAGGATCTGGCAGCAAATGATATCCTGGATT
ACAAGGATGACGACGATAAGGTTTAA

Protein Sequence: >MR212502 representing NM_172495
 Red=Cloning site Green=Tags(s)

```
MDTKEEKKEQKERKQSYFARLKKKKQAKQNAEIVSAASSKSRSGKDDANSDILEQDKFNVTAEGDHSTDD
KKKRKSNQLKEIRRTELKRYYSVDDNQNKTHDKKEKMMVQKPQGTMEYTAGSQDTLNSVALKFNVTPNK
LVELNKLFTHTIVPGQVLFVPDANISSSTIQLSSSTPGATVSPSSDAEYDKLPDADLARKALKPIERVL
SSTSEEDEPGVVVKFLKMNCRYFTDGKGVVGGVMIVTPNNIMFDPHKSDPLVIENGCEEYGLICPMEEVVS
IALYSDISHMKIKDALPSDLPRDLCPLYRPGEWEDLASEKDINPFKFKSINKKQNGERTLALDAKS
VRSPEESTERTCTRIEPPDNSELWKLKQLQSSRGTTSSESPSVTQLSMRAALEPTAKENCLLKGEDFVDL
EELSSQPESGINKGDATKECLSYDQKKDGPHTVMSAKKGHVQSAQEVMPESDTELKALDLETAEKQDE
APEVDKHSQSPENLGESTLNIHEDLDKIKLIEFYLNKNKEGSQLENNVQKSELSDRKSIEPGGIDITLSS
SLPQAGDSPEDNKEPGLWVGGGETLPLKLDPSAEETVINNKEVLDLSSLDKMSAQMDNKSEIQL
WLLKRIQVPIEDILPSKEEKSKTPPMFLCIKVGKPMRKSASFASHTATMVQYKRRRQPEYWFVAVPRERVD
HLYTFFVQWSPDYYGKDAKEQGFVVVEKEELNMIDNFFSEPTTKSWEIITVEEAKRRKSTCSYEEEEEE
EEGLPILQPHSALLENMHIEQLARRLPARVQGYPWRLAYSTLEHGTSLKTLYRKSASLSDPVLVLIKMDM
NQIFGAYATHPFKFS DHYYGTGETFLYTFSPNFKVFKWSENGSYFINGDISSLELGGGGGRFGLWLDADL
YHGRSNCSTFNNDILSKKEDFIVQDLEVWTFE
```

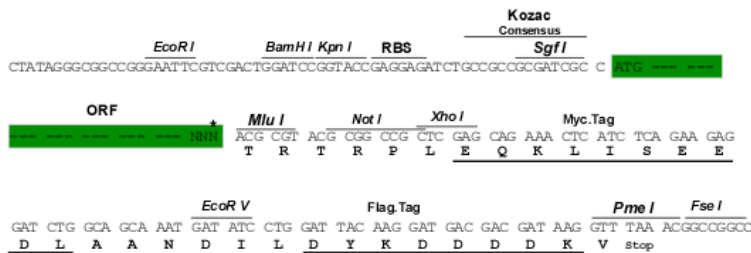
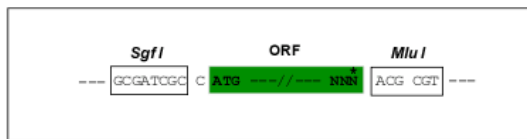
TRTRPLEQKLISEEDLAANDILDYKDDDDKV

Chromatograms: https://cdn.origene.com/chromatograms/mm9097_h03.zip

Restriction Sites: SgfI-MluI

Cloning Scheme:

Cloning sites used for ORF Shuttling:



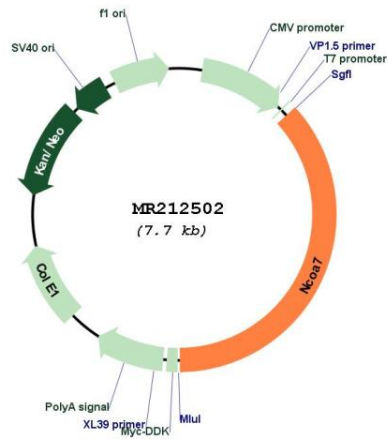
* The last codon before the Stop codon of the ORF

ACCN: NM_172495

ORF Size: 2829 bp

OTI Disclaimer:	The molecular sequence of this clone aligns with the gene accession number as a point of reference only. However, individual transcript sequences of the same gene can differ through naturally occurring variations (e.g. polymorphisms), each with its own valid existence. This clone is substantially in agreement with the reference, but a complete review of all prevailing variants is recommended prior to use. More info
OTI Annotation:	This clone was engineered to express the complete ORF with an expression tag. Expression varies depending on the nature of the gene.
Components:	The ORF clone is ion-exchange column purified and shipped in a 2D barcoded Matrix tube containing 10ug of transfection-ready, dried plasmid DNA (reconstitute with 100 ul of water).
Reconstitution Method:	<ol style="list-style-type: none">1. Centrifuge at 5,000xg for 5min.2. Carefully open the tube and add 100ul of sterile water to dissolve the DNA.3. Close the tube and incubate for 10 minutes at room temperature.4. Briefly vortex the tube and then do a quick spin (less than 5000xg) to concentrate the liquid at the bottom.5. Store the suspended plasmid at -20°C. The DNA is stable for at least one year from date of shipping when stored at -20°C.
RefSeq:	NM_172495.6
RefSeq Size:	5134 bp
RefSeq ORF:	2832 bp
Locus ID:	211329
UniProt ID:	Q6DFV7
Cytogenetics:	10 A4
MW:	106.4 kDa
Gene Summary:	Enhances the transcriptional activities of several nuclear receptors. Involved in the coactivation of different nuclear receptors, such as ESR1, THRB, PPARG and RARA (By similarity).[UniProtKB/Swiss-Prot Function]

Product images:



Circular map for MR212502