

Product datasheet for **MR212415**

Fbxl18 (NM_001033312) Mouse Tagged ORF Clone

Product data:

Product Type:	Expression Plasmids
Product Name:	Fbxl18 (NM_001033312) Mouse Tagged ORF Clone
Tag:	Myc-DDK
Symbol:	Fbxl18
Synonyms:	AI427077; B130019G13Rik; C330021B20Rik
Mammalian Cell Selection:	Neomycin
Vector:	pCMV6-Entry (PS100001)
E. coli Selection:	Kanamycin (25 ug/mL)



[View online »](#)

ORF Nucleotide
Sequence:

>MR212415 representing NM_001033312
Red=Cloning site Blue=ORF Green=Tags(s)

TTTTGTAATACGACTCACTATAGGGCGGCCGGGAATTCGTCGACTGGATCCGGTACCGAGGAGATCTGCC
GCCGCGATCGCC

ATGTCCAGTGAGGAGAGGCAGCGGCAGAGGCAGCAGGTGACACCCACCTGCTTGGCTTCTCCGATGAGA
TCCTCCTACACATCCTGAGCCATGTCCCAGCACGGACCTGGTTCTCAGTGTGCGGCGCACCTGCAGGAA
ACTGGCAGCCCTGTGCCTGGACAAGAGCCTGGTGACACCCGTGCTGCTGAGAAGGACTACCAGGCCAGT
GAGGAGAAGTGAAGCAACTGGTGAAGGAGATTGGCCGGGAGATCCAACAGCTGAACATGGCAGGCTGCT
ATTGGTTGTCTGGCTCCACCATCGAGCAGTGGCCGGTGTACAGCCTGGTGAAGGTGAACTTGTGAGG
TTGCCACCTCACCTCGCTGCGGCTGTCCAAGGTGCTCTCGGCCCTGCAGCACCTGCGCTCATTGGCCATT
GACGTGAGCCCCGGCTTCGACGCCAGCCAGCTGAGCAGTGAAGGCCACGTAAGCCCGCTGCAGG
AGCTCAAGCAGACACTCTTCAGCCGCTCTACGGGGTGGTCCCTGCTGTGCCAGCCTGCAGAAGCTGCT
GCTCTACTTCGAGATCCTGGACCGACCCGGGAGGGGGCCGTCTCTCGGCCAGCTCATGGTGGCCAG
AGCAACGTGCCCACTACCAGAACCTGCGTGTCTTCTATGCACGCCTGGCTCCTGGCTACATCAACCAGG
AGGTGGTGAAGTCTACCTGGCCGTGCTCAGCGACCGCACGCCTGAGAACCTGCATGCCTTCTCATCTC
CGTCCCTGGCAGCTTTCAGAGAGCGGGGCCACCAAACTTGGTGGACTCCATGGCCCGCAACGTGGCC
CTGGATGCACTGCAGTGCCTCAAGTCTGGCTCAATGGTCCACCCTCTCCAGCATATGAAATCAACA
ATCCCTTCTACTTCAGCTTCAGCCGGTGTACGCTGTGAGGGGGTACCTGATTGAGCGGCTCATCAATGG
CGGAAGGACCTGCGTAGCCTGGCCAGCCTCAACCTCAGCGGCTGTGTGCATTGCCTGTCTGCGGACTCG
TTGCTGCGCAAGGCCGAGGACGACATTGACAGCAGCATCTGGAGACTCTGGTGGAGTCTGTGCAACC
TGCACCCTCAATCTCTCTGCCGCCATCACCACAGCTCCGACGGCCTGGGCCGCCACCTCTGCCAGT
CCTGGCTCGGCTCTGCCACCTGCGTTCCTGTCCCTGCCTGTCTGCTCTGTGGTGAAGTCCGACCCAGG
CCTGACCGTGCGCCCGCCCGCCAGCCATGCACGCAAGTACCCCGTGGATTTGGCAAGAAGGTGCGCATTG
GGGTGCAGACCTGTCCCAACCCCTTCGTGGGCCAGTGGGCCACAGCCTGCCTCTGTGTTCTGGTCTCT
GCTGAAGAAGCTCCCATTTCTGGAGCACCTGGAAGTGTGCGGTCCAATTTCTCCTCAGCCATGCCCCGC
AATGAGCTGCCATCCGCAACTCCCTCCCACCCTGCAGTGGGCACAGAACGTTGGGGGACTCAGAGGTGG
CCGCCATTGGCCAGCTGACCTTCTGCGGCACCTGACTCTAGCCCACTGCCAGGCATGCTCACGGGCTC
CGGACTCGTGAAGTGTACATGCTCTTGTGACATGCTGAAGCACTGCAAGCGGCTGAAGGACCTCAGGT
TGGAGCAGCCCTACTTCAACGCCAACGCTCAGTCTTCCAGGCACTGGGCCAGTGTCTGCTCTGCAGCG
CCTGTGCCTGGTATCTCGCAGCGGCACCCTGCAGCCAGATGCCGTGCTGGCCTTATGGCCCGTTGCCTG
CAGGTCGTGATGTGACATGTTACCGGAGAATCCCTTACCACCTGCAAGAGCCTGCAGCAGTGCCTCC
TCCGGAGTTTCCAGGCCGAGAGGCCCGCTTGAACGTGCTCATCTTCCCCTGCTCCACGAGGGCCCTGAC
AGATGTCATCCGAGATGTCCCATGCTGCACCTGGATGAGATCACCTTGTCAAAGCCGTGTGGCTGAG
GAACCGCCCAACCTATGGTGG

ACGCGTACGCGGCCGCTCGAGCAGAACTCATCTCAGAAGAGGATCTGGCAGCAAATGATATCCTGGATT
ACAAGGATGACGACGATAAGGTTTAA

Protein Sequence: >MR212415 representing NM_001033312
Red=Cloning site Green=Tags(s)

```
MSSEEEAAEAAGDTHLLGFSDEILLHILSHVPSTDLVLSVRRTCRKLAALCLDKSLVHTVLLQKDYQAS
EEKVKQLVKEIGREIQQLNMAGCYWLSGSTIEHVARCHSLVKVNLSGCHLTSLRLSKVLSALQHLRSLAI
DVSPGFDAQSLSSECKATLSRVQELKQTLFTPSYGVVPCASLQKLLL YFEILDRREGAVLSGQLMVGQ
SNVPHYQNLRVFYARLAPGYINQEVVRLYLAVLSDRTPENLHAFLLISVPGSFAESGATKNLLDSMARNVA
LDALQLPKSWLNGSTLLQHMKFNNPFYFYSRCTLSSGGHLIQRLLINGGKDLRSLASLNLGCVHCLSADS
LLRKAEDDIDSSILETLVESCCNLHHLNLSAAHHHSSDGLGRHLCQLLARLCHLRSLSLPVCSVADSAPR
PDRAPAPPAMHAVPRFGKVKRIGVQTCNPFVGSAPQASVFWSLKLLPFLEHLELIGSNFSSAMPR
NEPAIRNSLPPCSRAQNVGDSEVAAIGQLTFLRHLTLAQLPGMLTGSLVSIQLQCQHLQSLANLGM
GKVVYMPALADMLKHCKRLKDLRLEQPYFNANAQFFQALGQCSSLQRLCLVSRSGTLQPDVAVLAFMARCL
QVVMCHMFTGESLTTCKSLQQSLLRSFQAERPALNVVIFPLLHEGLTDVIRDVPMLHLDEITLFKSRVAE
EPPNLWW
```

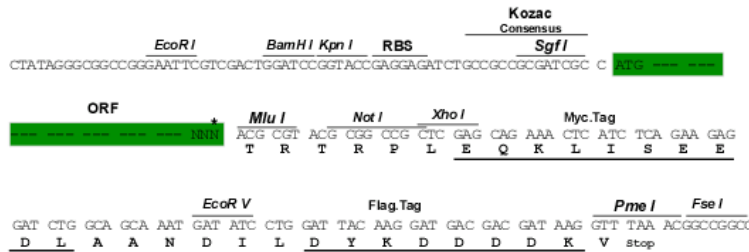
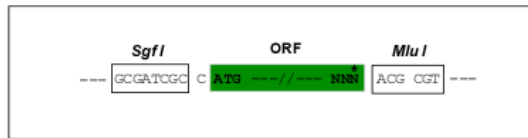
TRTRPLEQKLISEEDLANDILDYKDDDDKV

Chromatograms: https://cdn.origene.com/chromatograms/mm9098_g09.zip

Restriction Sites: Sgfl-MluI

Cloning Scheme:

Cloning sites used for ORF Shuttling:



* The last codon before the Stop codon of the ORF

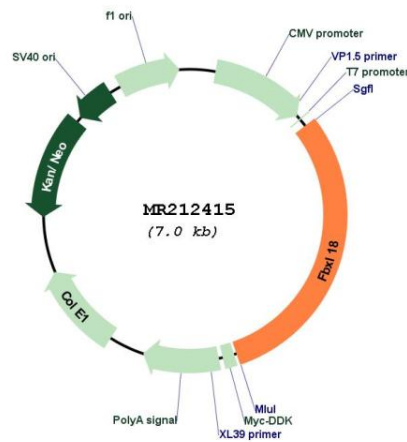
ACCN: NM_001033312

ORF Size: 2121 bp

OTI Disclaimer: The molecular sequence of this clone aligns with the gene accession number as a point of reference only. However, individual transcript sequences of the same gene can differ through naturally occurring variations (e.g. polymorphisms), each with its own valid existence. This clone is substantially in agreement with the reference, but a complete review of all prevailing variants is recommended prior to use. [More info](#)

OTI Annotation: This clone was engineered to express the complete ORF with an expression tag. Expression varies depending on the nature of the gene.

Components:	The ORF clone is ion-exchange column purified and shipped in a 2D barcoded Matrix tube containing 10ug of transfection-ready, dried plasmid DNA (reconstitute with 100 ul of water).
Reconstitution Method:	<ol style="list-style-type: none"> 1. Centrifuge at 5,000xg for 5min. 2. Carefully open the tube and add 100ul of sterile water to dissolve the DNA. 3. Close the tube and incubate for 10 minutes at room temperature. 4. Briefly vortex the tube and then do a quick spin (less than 5000xg) to concentrate the liquid at the bottom. 5. Store the suspended plasmid at -20°C. The DNA is stable for at least one year from date of shipping when stored at -20°C.
RefSeq:	<u>NM_001033312.3, NP_001028484.2</u>
RefSeq Size:	2831 bp
RefSeq ORF:	2124 bp
Locus ID:	231863
Cytogenetics:	5
MW:	77.7 kDa

Product images:


Circular map for MR212415