

Product datasheet for **MR212257**

Mzf1 (NM_145819) Mouse Tagged ORF Clone

Product data:

Product Type:	Expression Plasmids
Product Name:	Mzf1 (NM_145819) Mouse Tagged ORF Clone
Tag:	Myc-DDK
Symbol:	Mzf1
Synonyms:	Mzf-2; Mzf2; Zfp98; Zfp121; Znf42
Mammalian Cell Selection:	Neomycin
Vector:	pCMV6-Entry (PS100001)
E. coli Selection:	Kanamycin (25 ug/mL)



[View online »](#)

ORF Nucleotide Sequence:

>MR212257 representing NM_145819
 Red=Cloning site Blue=ORF Green=Tags(s)

TTTTGTAATACGACTCACTATAGGGCGGCCGGAATTCGTCGACTGGATCCGGTACCGAGGAGATCTGCC
 GCC**CGGATCGCC**

ATGAGACCCACTGTGCTGGGCTCCTCGGGCTGTGCACCCCGAAAAATGAGCCTGCTCTGGTGAAGCTGG
 AGGACTCTGACAGCGACGATGAGAGAGAAGATATATTGTGGGACCCAGGCCTTGAGGCTGCACGCTACG
 CTTCCGGTGCTTCCGGTATGAGGATGCAATAGGTCTCAGGAAGCCCTGGCCAGCTCCGAGAACTGTGT
 CACCAGTGGCTACGCCCGAAGTACATTCCAAGGAACAGGTGCTAGAGCTCTTGGTGTGGAGCAGTTCC
 TGGGTGCACTGCCCTGAGATCCAGGCCAAAGTCAAGGGCAGTGGCCAGGCAGCCCTGAAGAGGCTGC
 TGCCTTGGTTGACAGACTTCGATGGGAGCTTGTGGACCTCGAAATGGTCCAGTCCAGGTGCAGGGC
 AAGGAGTCTATCAGAGAAGATGGAACCTCCAGCTTCCAGCCAAGACCTCACATCAAGCTTCAGACTC
 CAGACCTGGGGCTGAGACTCCCAAGGAGCCATGCAGGAATTGCCACTGAACCTACCAATGAAAGAGGA
 GACAGAGTTGTTGGGAATCCAGAGCTCCTGGAATCTGGGCTCTTCTGCTGCTCAAGAGGCTGCAGCC
 ACTCTCTACCTAAGGAGACCCAGGGCCATGGGACAACACTGGACCAGACCTCTCTCATAGCGACACTG
 AGCCTGATGTGCCCCATGGAGTGGAGCCCTATGCCCTGTGGCATGAGGAAGTGGGGGCATCTTTTC
 ACCAGGGTTTACGCTGCAGATGGACAGCATCACGGCAGAGCCAGATATGATGAGCCCCACCTCCATGTC
 CCCTGGGATCTGGACATGGCTAGCCTCTCTGGACAGATACAGTCCCTACCACGGAAGGTGGCTTTGCC
 ATGCCCTTGTACTCCCCAGCGACCCAGGAGGTGAACAGGACCCCTGCCTGCGAGGATCCCTGCCCCAGTGT
 GGGCCAGCATTGGTGGGACTCGATGGCATGCCCAAGGGCCGGAGCCAGAGCCACCTCGCTCGGGG
 ACTGGACCATGCGAGGGCCGCTGCGACGTGTGTGGCAAGGTTCAGCCAGCGAAGCAATCTGCTGC
 GGCACCAAGATCCACACAGGCGAGAGACCGTTCTGTGTGGGAGTGTGGCCGAGTTCAGCCGAGC
 CTCTCACCTACTGCGCCACCAGCTCACGCATACTGAGGAACGGCCTTTCGTGTGCCGCGACTGTGGCCAG
 GGCTTCTGTGCGCAGCGCCCGCTGGAGGAGCACCGGCGTGTACACACGGGCGAGCAGCCGTTCCGCTGCA
 CAGAGTGTGGCCAGAGCTTTCGGCAGCGCTCCAACCTACTGCAGCACCAGCGCATCCACGGCGATCCGCC
 TGGTCCAGCGCCATCCATCTGCCCTCGCCGGAGTCCCGGAGCCCCGGGCCCTTCCCATGCAGCGAG
 TGCTGCGAGAGCTTCCACGACGCGCCGTGCTGCTAGAGCACCAGGCGGTGCACACCGGGGACAAGTCTT
 TCGGATGCGTGGAGTGGCGGAGCGCTTCGGCCCGGTTCCGTGCTGTTGCAGCACCGGCGCGTGCACAG
 CGGCGAACGGCCCTTCGCTGTGCCGAGTGGGCCAAAGCTTCCGGCAGCGCTTAATCTCACCCAGCAC
 CAGCGCATCCACTGGAGAGCGGCCCTTCGCCTGCGCCGAATGTGGCAAGACCTTCCGCCAGCGGCCCA
 CGCTCACGCAGCACCTGGTGTGCATACGGGTGAGAAGCCCTTCGCGTGCCCGAGTGGCCAGCGCTT
 CAGCCAGCGACTCAAGCTCACGCGCCACAAAGGACCCATACTGGCGAGAAGCCCTACTGCTGCGGTGAG
 TGCGGCCCTCGGCTTACGCAGGTGTCTCGGCTCACCGAGCACCAGCGCATCCACACAGGTGAGCGGCCCT
 TCGCCTGTCCCGAATGTGGCCAGAGTTTCCGGCAGCAGCCAACTCACCCAGCACCGGCGCATCCATAC
 GGGCGAGCGACCTACGCGTGTCCCGAATGTGGCAAGGCCCTTCCGCCAGCGGCCACGCTCACGCAGCAC
 CTGCGCACTCACCGGCACGAAAAGCCCTTCGCCTGCCAGGACTGTGGCCGAGCCTTCAACCAGAGCACCA
 AGCTCATCCAGCACCGGTGTCCACAGCACTGAG

AGCGGACCGACGCGTACGCGGCCGCTCGAGCAGAACTCATCTCAGAAGAGGATCTGGCAGCAAATGATATCC
 TGGATTACAAGGATGACGACGATAAGGTTTAA

Protein Sequence: >MR212257 representing NM_145819
Red=Cloning site Green=Tags(s)

```
MRPTVLGSSGCAPPENEPALVKLESDSDDEREDILWDPGLEAARLRFRCFRYEDAIGPQEALQRLRELC
HQWLREPVHSKEQVLELLVLEQFLGALPPEIQAQVQGWPGSPPEAAAALVDRLRWELDGPWKVTVQVQG
KEVLSEKMEPSSFQPRPHIKLQTPDPAETPQGAMQELPLNLPKKEETELLGNPELLESGPLPAAQAAAA
TLLPKETQGHGTTLDQTSPHSDTEPDVPPWSEDPMPLWHEEVGGIFSPGFTLQMDSITAEPDMMSPHLHV
PWDLDMASL SGQIQSPTTEGGFAHALVLPSPDPGGEQDPACEDPCPSVGPALVATRWHPGRSRSQSHPRSG
TGAMRGGRCDCVCGKVFVSQRSNLLRHQKIHTGERPFVCGECGRSFSRSHLLRHQLTHTEERPFVCRDCGQ
GFVRSARLEEHRVHTGEQPFRCCTECGQSFRQRSNLLQHQRHGDPPGPAPSILPLAGVPEPPGPFPCSE
CCESFPRRAVLLEHQAVHTGDKSFGCVCEGERFGRRSVLLQHRRVHSGERPFACAECGQSFRQRSNLQHQ
QRIHTGERPFACAECGKTFRQRPTLTQHLRVHTGEKPFACPECGQRF SQRLKLRHQRHTHTGEKPYCCGE
CGLGFTQVSRLTEHQRIHTGERPFACPECGQSFQRQHANLTQHRRHTGERPYACPECGKAFRQRPTLTQH
LRTHRHEKPFACQDCGRRFNQSTKLIHQHVRHSTE
```

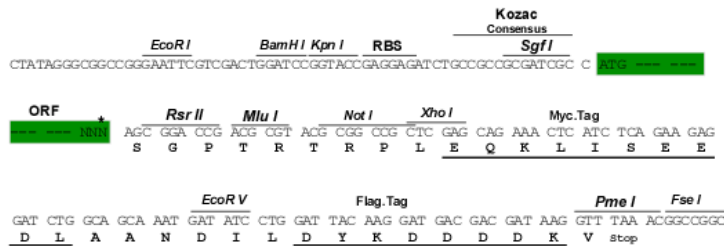
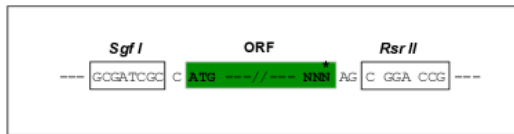
SGPTRTRPLEQKLI SEEDLAANDILDYKDDDDKV

Chromatograms: https://cdn.origene.com/chromatograms/mm9034_b12.zip

Restriction Sites: SgfI-RsrII

Cloning Scheme:

Cloning sites used for ORF Shutting:



* The last codon before the Stop codon of the ORF

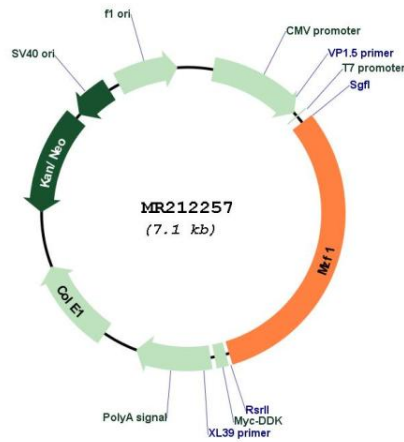
ACCN: NM_145819

ORF Size: 2205 bp

OTI Disclaimer: The molecular sequence of this clone aligns with the gene accession number as a point of reference only. However, individual transcript sequences of the same gene can differ through naturally occurring variations (e.g. polymorphisms), each with its own valid existence. This clone is substantially in agreement with the reference, but a complete review of all prevailing variants is recommended prior to use. [More info](#)

OTI Annotation: This clone was engineered to express the complete ORF with an expression tag. Expression varies depending on the nature of the gene.

Components:	The ORF clone is ion-exchange column purified and shipped in a 2D barcoded Matrix tube containing 10ug of transfection-ready, dried plasmid DNA (reconstitute with 100 ul of water).
Reconstitution Method:	<ol style="list-style-type: none"> 1. Centrifuge at 5,000xg for 5min. 2. Carefully open the tube and add 100ul of sterile water to dissolve the DNA. 3. Close the tube and incubate for 10 minutes at room temperature. 4. Briefly vortex the tube and then do a quick spin (less than 5000xg) to concentrate the liquid at the bottom. 5. Store the suspended plasmid at -20°C. The DNA is stable for at least one year from date of shipping when stored at -20°C.
RefSeq:	<u>NM_145819.2, NP_665818.2</u>
RefSeq Size:	3497 bp
RefSeq ORF:	2208 bp
Locus ID:	109889
Cytogenetics:	7 7.73 cM
MW:	82.9 kDa

Product images:


Circular map for MR212257