

## Product datasheet for **MR212244**

### **Vmn2r60 (NM\_001105057) Mouse Tagged ORF Clone**

#### **Product data:**

Product Type:	Expression Plasmids
Product Name:	Vmn2r60 (NM_001105057) Mouse Tagged ORF Clone
Tag:	Myc-DDK
Symbol:	Vmn2r60
Synonyms:	Casr-rs3; EG637898; Gprc2a-rs3
Mammalian Cell Selection:	Neomycin
Vector:	pCMV6-Entry (PS100001)
E. coli Selection:	Kanamycin (25 ug/mL)



[View online »](#)

**ORF Nucleotide Sequence:**

>MR212244 representing NM\_001105057  
 Red=Cloning site Blue=ORF Green=Tags(s)

TTTTGTAATACGACTCACTATAGGGCGGCCGGGAATTCGTGACTGGATCCGGTACCGAGGAGATCTGCC  
 GCC**CGGATCGCC**

ATGTTCCGGATTTTACCTTTGTGTTCCCTGATTTTCCATTTTTATGTGTGCCTTACTGACAATGAAT  
 GCTATGTAAAAAGCAATGATTATTTTACCATGAAGGAGATGTGACAATTGGTGCACCTTTCCCTCTTCA  
 TATTTTGTACACAGGCAACACACTTACTGATCAATCTTTTCCATATAATTTTCAAGACTATCATATACAG  
 TATAAATTTAAGAACTACCTGTTTGTCTGGCCCTGGTGTGGCCATTGAAGAGATCAACAGGAACCCTG  
 ATCTTCTACCCAATAACTATTGGATATGATATCTATAATTTCCATTTACTGAAAAGAATATTCTTTA  
 TAGTGCCTTTCTTTGGCGCACAGGGATAAGTCATCCCCTCTCAACTGTGACTGTGGTCAACAAGAGGACG  
 TCACCTGTGACTCACAGGACCATCATGGTCAGCATCTGCCACATTGGAACATTTCTACAACCTTACA  
 AAATACCTCAGCTCACTTTTGGACCTTTTGATTCTATCTTGAATGACCGAGCTCAGTTAATTCTCTTTA  
 CCAAATGGCCCCGAAGACACATCTCTGCCATTTGCCATAGTCTTTTTGTGCTTCAATTCAGCTGGTCC  
 TGGGTTGGTCTGATCCTCCAGATGACCACAGAGGGACTCAGATTCCTTCAGACTTAAGAGAAAATATGG  
 AGAGTCATGGTATCTGCATAGCCTTTTTGAAAATGATCTCTGGCACATGGAATGCATTTTCCAATGCATT  
 ATGAAAAGTATGGAGAAGATTGAGGAATCATCAGCAAATGTCATAGTTATTTATGGAGACATATTTCT  
 GTACAAGTAAATGCTACATATTACACAACCTGTTAGTGACATGGAAAAGTCTGGGCTTGAACCTTTCAT  
 GGGATGTTGATAGCCACTCTGATTATTTTATGGTAGAGTCATTTTATGGGAGTCTTATTTTCTACACCA  
 CCATGAAGAGATGGTTGAGTTTATGAATTTTGTCCAAACAGTTAATCCTTACAAATACCCAGAGGACAAC  
 TATCTTCTAAGTTTGGCATTGTTTTCAAGTGCTCATTCTTAAATTTGATTGTGAGCTTTTGGAGA  
 ACTGCCAACCCCAATGCTTCTTTGGATTTACTTCCAAGACACCTTTTGGACCCAGCCATGAGTGAGGAAG  
 CTACAATATATAACAATGCTGTGATGCTGTGGCCTATAGTCTCCATGAGATGAATCTTCAACAAATACAG  
 ACCCAACCATATGCCAATGGAGAAGAAATGGCATTCTCCCCTGGCAGCTTACCCTTTCTAAAGAACA  
 CGATAATGAAAAGTCATGTGAGAGGAGACACAGTAACGCATGGGGGAAGAAAATTAGATGCACAGTATGA  
 CATTCTAATTTTGGAAATTTTCCAAGTGGTCTTGGATTAAAGGTGAAAGTAGGAACCTATTCTCTAAGT  
 GCTCAGCACAGTCTACATTTCTCTATATGTGAACAGATGATACAGTGGCCTATAGGGTTACAAAGATTC  
 CTCAGTCTGTGTGAGTGTGAGAGCTGTAGGCTGGATTGAGGAAAGCTGCCAGGAAGGCAAGGCTGTCTG  
 CTGCTTTGATTGTATTCCCTGTGCCAACAATGAGATTTCTAATGAGACAGATATGGAGCAGTGTGTGCAG  
 TGTCAGAAAAGTCACTATGCCAACTCAGAGAAGAATCACTGCCTCCAGAAATCTGTGAGCTTTTGGCCT  
 ATGAAGAGCCTTTGGGAATGGCACTCACCATCATAGCACTATGCTTCACTCTACTCACAGCTGTGGTTCT  
 TGTAGTCTTTGTGAAGCACAGAGACACACCCATTGTCAAGGCCAATAACAGGACTCTCAGCTACATCCTG  
 CTATTGCACTCTTATCAGTTTCTCAGTTTCTTGTGTTTATTGGCCAGCCCAACACAACCACCTGCA  
 TCTTGCAGCAGACAGCAGTTGGAATTTGTTCACTGTGGCTCTCTCCACAGTGTGGCCAAAGCTATTAC  
 AGTGGTTATTGCATTCAAAGCCACTGTTCCAGCTAGAATGGTGTGAGATGGTTAATGGTATCAAGAGCCCT  
 AATTTATCATTCCCCTGACACTGATACAATAATATCTGTGGAATCTGGTTGGTTACCTCTCCAC  
 CCTTCAATTGATCTAGATACTCATGCTGAACATGGTCACATCATCATTGTGTGCAACATGGGTTCAACAGT  
 TGCCTTCCACACTGTCTGGGGTACCTCTGCTCCTTAGCACTTGGGAGCTACACCATGGCCTTCTGTCC  
 AGGAATCTGCCTGACACCTTCAATGAAGCCAAGTTCTGTGATTGAGCATGCAGATATTCTTCTGTGTTT  
 GGATCACTTTCTCCCTGTCTACCATAGCACAAGGGGAAGTGTGTTGGCTATGGAAGTGTGTTTGTAT  
 CTTGGCTTCCAATATAGCACTCCTTGGATTGATTTTACCCCAAGTGTACATTATTTGTTAAGGCCA  
 GAAAAAACTCTATCTTGGTGTGAGGCACAAAATCATT

**ACGCGT**ACGCGGCCGCTCGAGCAGAACTCATCTCAGAAGAGGATCTGGCAGCAAATGATATCCTGGATT  
 ACAAGGATGACGACGATAAGGTTTAA

Protein Sequence: >MR212244 representing NM\_001105057  
 Red=Cloning site Green=Tags(s)

MFRIFTFVFLYFPIFMCFAFTDNECYVKSNDYFYHEGDVTIGALFPLHILYTGNTLTDQSFYPNFQDYHIQ  
 YKFKNYLFLVLAIFAIEEINRNPDLLPNITIGYDIYNIPFTEKNILYSAFLWRTGISHPLPNCDCGKHRT  
 SPAVL TGPSWSASAHIGTFLQLYKIPQLTFGPFDSILNDRAQFNLSYQMAPEDTSLPFAIVFLLHFSWS  
 WVGLILPDDHRGTQILSDLRENMESHGICIAFLKMI SGTWNAF SNALWKSMEKIEESSANVIVYGDII S  
 VQGLMLHITQLLVTWKVWVWLNSSWDVDSHSDYFMVESFHGSLIFSYHHEEMVEFMNFVQTVNPKYPEDN  
 YLPKFWHLFFKCSFSKFCQLENCQPNASLDLLPRHL FDPAMSEEGYNIYNAVYAVAYSLHEMNLQQIQ  
 TQPYANGEEMAFSPWQLHPFLKNTIMKSHVRGDTVTHGGRNLDAQYDILNFWNFP SGLGLKVKVGTYSLS  
 AQHSLHF SICEQMIQWP IGTKIPQSVCE SCRPGFRKAAQEGKAVCCFDCIPCANNEISNETDMEQCQVQ  
 CPESHYANSEKNHCLQKSVSFLAYEEPLGMALTI IALCFLLTAVVLVVFVKHRDTPIVKANNRTLSYIL  
 LLTLFISFLSLLFIGQPNTTTCILQQTAVGILFTVALSTVLAKAITVVI AFKATVPARMVRWLMVSRAP  
 NFIIPICTLIQLIICGIWLVTSPPFIDLDTAHEGHIIIVCNMGSTVAFHTVLGYLCSLALGSYTMAFLS  
 RNLPTDFNEAKFLSFSMQIFFCWITFLPVYHSTKGKVMVAMEVFCILASNIALLGLIFTPKCYIILLRP  
 EKNSYLGVRHKII

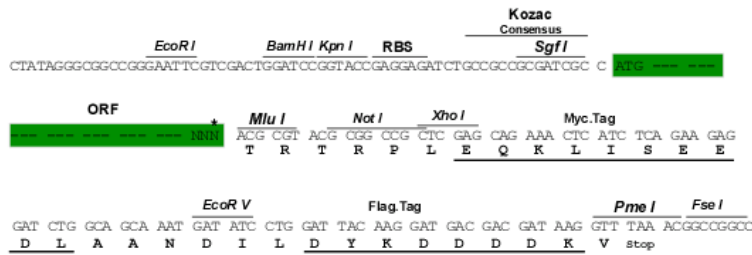
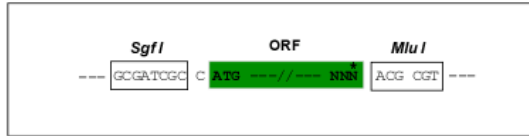
TRTRPLEQKLISEEDLAANDILDYKDDDDKV

Chromatograms: [https://cdn.origene.com/chromatograms/mm9093\\_h03.zip](https://cdn.origene.com/chromatograms/mm9093_h03.zip)

Restriction Sites: SgfI-MluI

Cloning Scheme:

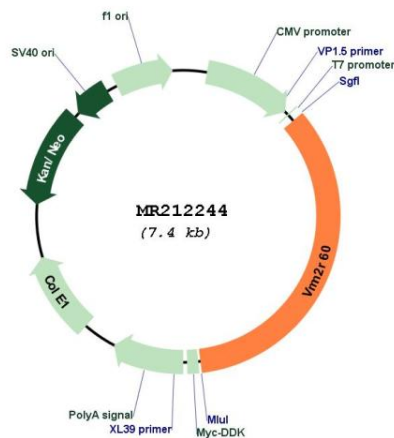
Cloning sites used for ORF Shuttling:



\* The last codon before the Stop codon of the ORF

<b>ACCN:</b>	NM_001105057
<b>ORF Size:</b>	2559 bp
<b>OTI Disclaimer:</b>	The molecular sequence of this clone aligns with the gene accession number as a point of reference only. However, individual transcript sequences of the same gene can differ through naturally occurring variations (e.g. polymorphisms), each with its own valid existence. This clone is substantially in agreement with the reference, but a complete review of all prevailing variants is recommended prior to use. <a href="#">More info</a>
<b>OTI Annotation:</b>	This clone was engineered to express the complete ORF with an expression tag. Expression varies depending on the nature of the gene.
<b>Components:</b>	The ORF clone is ion-exchange column purified and shipped in a 2D barcoded Matrix tube containing 10ug of transfection-ready, dried plasmid DNA (reconstitute with 100 ul of water).
<b>Reconstitution Method:</b>	<ol style="list-style-type: none"> <li>1. Centrifuge at 5,000xg for 5min.</li> <li>2. Carefully open the tube and add 100ul of sterile water to dissolve the DNA.</li> <li>3. Close the tube and incubate for 10 minutes at room temperature.</li> <li>4. Briefly vortex the tube and then do a quick spin (less than 5000xg) to concentrate the liquid at the bottom.</li> <li>5. Store the suspended plasmid at -20°C. The DNA is stable for at least one year from date of shipping when stored at -20°C.</li> </ol>
<b>RefSeq:</b>	<u>NM_001105057.1, NP_001098527.1</u>
<b>RefSeq Size:</b>	2562 bp
<b>RefSeq ORF:</b>	2562 bp
<b>Locus ID:</b>	637898
<b>Cytogenetics:</b>	7
<b>MW:</b>	97.1 kDa

**Product images:**



Circular map for MR212244