

Product datasheet for MR212149

Notch3 (NM_008716) Mouse Tagged ORF Clone

Product data:

Product Type:	Expression Plasmids
Product Name:	Notch3 (NM_008716) Mouse Tagged ORF Clone
Tag:	Myc-DDK
Symbol:	Notch3
Synonyms:	AW229011; hpbk; N3
Vector:	pCMV6-Entry (PS100001)
E. coli Selection:	Kanamycin (25 ug/mL)
Cell Selection:	Neomycin
ORF Nucleotide Sequence:	>MR212149 representing NM_008716 Red=Cloning site Blue=ORF Green=Tags(s)

TTTTGTAATACGACTCACTATAGGGCGGCCGGAATTCGTCGACTGGATCCGGTACCGAGGAGATCTGCC
GCC**GCGATCGCC**

ATGGGGCTGGGGCCCGGGCCCGCCCGCGTCGTCGCCTGATGGCCTTGCCACCGCCACCACCGCCCA
TGGGGCGCTGCCCTGCTGCTGCTAGCGGGCTGGGGCTGCAGCACCCCTTGCTGGATGGAAG
CCCATGTGCAAAATGGAGGTCGGTGCACCACCAGCAGCCCTCCCTGGAGGCTGCTTGCCTGTGCCTGCCA
GGCTGGGTGGGTGAGCGGTGCCAGCTGGAAGACCCCTTGCCACTCAGGCCCTTGTGCTGGCCGAGGGGTTT
GCCAGAGTTCAGTGGTGGCGGGACCGCCCGATTCTCCTGTCGTTGTCTCCGTGGCTTCCAAGGCCCAGA
CTGCTCCCAGCCAGACCCTGCGTCAGCAGGCCCTGTGTTTCATGGTGGCCCTGCTCAGTGGGGCCGGAT
GGCCGATTTGCCTGTGCCTGCCACCTGGCTACCAGGGTCAAAGCTGCCAAAGTGACATAGATGAGTGCC
GATCTGGTACAACCTGCGTCATGGTGGTACCTGTCTCAATACACCTGGATCCTTCCGCTGCCAGTGCC
TCTTGGTTATACAGGGCTGCTGTGTGAGAACCCTAGTGCCTGTGCCCTTCCCGTGTGTAATGGT
GGCACCTGTAGGCAGAGCAGTGTGTACATATGACTGTGCTTGCCTTCCCTGGCTTCGAGGGCCAGA
GTGAAGTCAACGTGGATGACTGTCTGGACATCGGTGTCTCAATGGGGGAACGTGTGTAGACGGTGTCAA
TACTTACAACCTGCCAGTGCCTCCGGAGTGGACAGGCCAGTTCTGTACAGAAGATGTGGATGAGTGTGAG
CTGCAGCCCAATGCCTGCCACAATGGGGGTACCTGCTTCAACCTACTGGGTGGCCACAGCTGTGTATGTG
TCAATGGCTGGACGGGTGAGAGCTGCAGTCAAGATATCGATGACTGTGCTACAGCCGTGTGTTCCATGG
GGCCACCTGCCATGACCGTGTGGCTCTTTCTACTGTGCCTGCCCTATGGGGAAGACAGGCCCTTGTGT
CATCTGGATGATGCATGTGTGAGCAACCCTGCCATGAGGATGCTATCTGTGACACAAACCCTGTGAGTG
GCCGGCCATCTGCACCTGCCACCTGGCTTCACTGGAGGGCATGTGACCAGGATGTGGATGAGTGCTC
GATTGGTGCCAAACCCTGTGAACATTTGGGTCGGTGTGTAATACACAGGGCTCATTCTTGTGCCAATGT
GGCCGTGGCTATACTGGACCTCGCTGTGAGACTGATGTCAATGAGTGTCTCTCCGGGCCCTGCCCAACC
AGGCCACGTGTCTTGACCGAATTGGCCAGTTTACTTGCATCTGCATGGCAGGCTTACAGGGACCTACTG
TGAGGTGGACATCGACGAATGTCAGAGCAGCCATGTGTCAATGGTGGTGTCTGCAAGGACAGAGTCAAT
GGCTTCAGCTGCACCTGCCCATCAGGATTCAGTGGTCCATGTGTGAGTGGATGTGGATGAGTGTGCAA



[View online >](#)

GCACTCCCTGCCGAATGGTGCCAAGTGTGTGGACCAGCCTGACGGCTATGAGTGTGCTGTGCAGAGGG
 CTTTGAGGGCACTTTGTGTGAGCGAAACGTGGATGACTGCTCTCCGGATCCCTGCCACCACGGGCGCTGT
 GTCGATGGCATTGCTAGCTTCTCGTGTGCTTGTGCCCCAGGCTATACGGGCATACGCTGTGAGAGCCAGG
 TGGATGAGTGGCGCAGCCAGCCCTGTGATATGGGGCAAATGTCTAGACTTGGTGGACAAGTACCTCTG
 CCGTTGCTCTCCCGAACACAGGTGTGAAGTGAAGTCAACATTGATGACTGTGCCAGTAACCCCTGT
 ACCTTTGGAGTTTGCCGTGATGGCATCAACCGTTATGACTGTGTCTGTGACGCTGGATTACAGGGCCCC
 TCTGCAACGTGGAGATCAATGAGTGTGCATCCAGCCCATGTGGAGAGGGTGGCTCCTGTGTGGATGGGGA
 AAATGGCTTCCACTGCCTCTGTCCACCTGGCTCCCTGCCTCCACTTTGCCTACCTGCGAACCATCCCTGT
 GCCACAAGCCCTGTAGTCATGGAGTCTGCCATGATGCACCAGGCGGGTTCGCTGTGTTTGTGAGCCCG
 GGTGGAGTGGCCCTCGCTGTAGCCAGAGCCTGGCTCCAGATGCCTGTGAGTCCCAGCCCTGCCAGGCTGG
 TGGCACCTGCACCAGTGTGGAATAGGCTTTCGCTGCACCTGTGCCCTGGATTCCAGGGCCATCAGTGT
 GAGGTGCTGTCCCTGTACTCCAAGCCTCTGTGAGCACGGAGGCCACTGTGAGTCTGACCTGACCGGC
 TGACTGTCTGTTCTGTCCCCAGGCTGGCAAGGCCACGATGCCAGCAGGATGTGGATGAATGTGCCGG
 TGCCCTCACCTGCGGCCCATGGTACCTGCACCAACCTGCCAGGGAATTCAGGTGCATCTGCCACAGG
 GGATACACTGGCCCTTCTGTGATCAAGACATTGACGACTGTGACCCCAACCCGTGCCTCCATGGTGGCT
 CCTGCCAGGATGGCGTGGGCTCCTTTTCTGTTCTTGCCTCGACGGCTTGTCTGGTCTCCTGTGCCCG
 AGATGTGGACGAATGTCTGAGCAGCCCTGTGGCCCTGGCACCTGTACTGATCACGTGGCCTCCTCACC
 TGTGCCTGTCCACTGGTTATGGAGGCTTCCACTGTGAGATTGACTTGCCGGACTGCAGCCCCAGTTCCT
 GCTTCAATGGAGGGACCTGTGTGGATGGCGTGAGCTCCTTCAGCTGTCTGTGTGCCCCGGCTACACAGG
 CACACTGCCAATACGAGGCTGACCCCTGCTTTTCCGGCCCTGTGTGCACGGGGGCATCTGCAACCCC
 ACCCACCAGGATTTGAATGCACCTGCCGGGAGGGCTTCACTGGGAGTCAAGTGCAGAACCAGTGGACT
 GGTGCAGCCAGGCACCTGTGAGAATGGGGTCTGTGTCCAGACTGGGGCTTACTGCATTTGTCCACC
 TGGATGGAGTGGCCCTGTGCGACATACAAGCCTGCCCTGCACGGAGGCCAGCCAGTGGAGGCGTGG
 AGGTTGGAGCAGCTGTGTAGGAAGGTGGAAGTGCATAGACAAGGGCCGCTCCCACTACTGTGTGTGTC
 CAGAGGGCCGTACGGGTAGTCACTGTGAACACGAGGTGGATCCCTGCACGGCCAGCCTTCCAGCACGG
 GGGCACTTGCCGTGGTTACATGGGGGGTATGTGTGTGAGTGTCCAGCTGGCTATGCTGGTGACAGTTGT
 GAGGATAATATAGATGAGTGTGCTTCCAGCCCTGCCAGAACGGAGGCTCCTGTATCGATCTTGTGGCCC
 GCTATCTCTGTTCTGTCCCCCTGGCACACTGGGAGTTCTCTGTGAGATCAATGAGGACGACTGTGACCT
 AGGCCCATCCTTGGACTCAGGCTTCACTGCCTACACAATGGCACCTGTGTGGACCTGGTGGTGGCTTC
 CGCTGAACTGTCCCCAGGATACACAGGTCTGCACTGTGAGGCAGACATCAATGAGTGTGCCCCGGGTG
 CCTGCCATGCAGGCATACTCGGACTGCCTACAAGATCCAGGTGGCATTTCGCTGCGTCTGCCATCC
 TGGCTTACAGGGCCTCGCTGTGAGATTGCTCTGTCCCCCTGTGAGTCCCAGCCATGTGAGCATGGAGGC
 CAGTGGCGTACAGCCTAGGCCGTGGAGGTGGGCTGACCTTACCTGTCACTGTGTCCCAGCATTCTGGG
 GTCTGCGTTGTGAGCGGGTGGCACGCTCTTGGCGAGAGCTGCAGTGGCCAGTGGGTATCCCATGCCAGCA
 GACAGCCCGTGGACCACGCTGCGCTTGTCTCCGGGGCTGTCCGGGCCCTCCTGCCGGGTTTCTAGGGCG
 TCACCCTCAGGAGCTACTAACGCCAGCTGCGCCTCTGCCCTTGTCTGCATGGGGCTCATGCTACCTG
 TACAGAGTGTCCCTTCTCCGCTGTGTGTGCGCTCCGGGCTGGGGCGGCCCGGTTGTGAGACCCCTTC
 CGCAGCCCTGAGGTCCCGAGGAGCCACGGTCCCGCGAGCGGCTTCCAGGCCAAGCGAGGGGACCCAG
 AACTGCCATCGTGTGAGTGAACACCCAGGCTGTGGCTGGATGGCGGTGACTGCTCACTGAACGTGGACG
 ACCCTGGAGGCAGTGTGAGGCACTGCAGTGTGGCGTCTTCAACAACAGCCGTGTGACCCGGCCTG
 CAGCTCTCCAGCCTGCCTCTATGACAACCTTACTGCTACTCTGGTGGCCGCGACCCGACCTGCAACCCCT
 GTTATGAGAAGTACTGCGCCGACCACTTTCAGATGGCCGTTGTGACCAGGGTGAACACTGAGGAAT
 GCGGCTGGGATGGGCTGGACTGTGCCAGCGAGGTCCCGGCCCTTTTGGCCGAGGGGTTCTGGTCTCAC
 AGTTCTTCTGCTCCTGAAGAGTTGTGCGCTCCAGTCCGACTTTCGACGCGACTCAGCGCTATTCTG
 CGCACCTACTGCGTTCGCTTGGACGACGTGGCCAGGCCATGGTCTTCCCTATCACCGGCCAAGCC
 CTGGCTCTGAATCCGGGTCCGTCGTGAGCTGGGTCTGAGGTGATCGGCTCTGTGGTGTGCTGGAGAT
 TGACAACCGGCTCTGTCTGCAGTCACTGAGAATGACCACTGCTTCCCTGATGCCAGAGTGTGCTGAC
 TACCTGGGAGCCTTGTGAGCAGTGGAGCGACTTGAATTTCCATACCCACTTCGGGATGTGCGAGGAGAGC
 CGCTGGAGGCCCCAGAGCAGAGCGTGCCTGCTGCCACTGCTGGTGGCAGGGGCTGTCTTTCTACTCAT
 CATCTTCACTGGGTGTGATGGTTGCCAGGCGAAAGCGAGAACACAGCACCCCTCTGTTCCCTGAGGGT
 TTTGCATTACACAAGGACATAGCTGTGCCACAAGGGCCGAGGGAGCCTGTGGACAAGATGCACTGG
 GAATGAAGAACATGGCCAAGGGTGTGAGTGTGATGGGGGAGTGGTACAGACTTGAATGACTCAGAATG

TCCAGAGGCCAAGAGACTGAAGGTAGAGGAGCCGGGCATGGGTGCAGAGGAGCCTGAGGACTGTCCGCAG
TGGACCCAACACCACCTGGTTGCTGCTGATATCCGTGTGGCACCAGCCACAGCGCTGACTCCTCCTCAGG
GAGATGCAGATGCAGACGGAGTGGATGTCAACGTCGAGGGCCTGATGGCTTCACCCCACTTATGCTGGC
CTCCTTCTGTGGGGAGCCCTGGAGCCGATGCCAGCTGAGGAGGATGAGGCGGATGACACATCAGCCAGC
ATTATCTCAGATCTGATCTGTCAAGGGGCCAGCTCGGGGCACGGACTGACCGCACTGGCGAGACCGCCC
TGCATTTGGCTGCCCGCTATGCTAGAGCGGATGCAGCCAAGCGTCTCCTGGATGCTGGGGCGGACACCAA
CGCCAGGATCATTGGGCCGCACCCCTGCACACCGCAGTGACAGCTGATGCCAGGGTGTCTCCAG
ATTCTCATCAGGAACCGCTCCACTGACCTGGATGCCCGAATGGCAGATGGCTCTACTGCACTGATCCTGG
CAGCCCGCTGGCAGTGGAGGGCATGGTGAAGAGCTCATCGCCAGCCATGCCGATGTCAATGCAGTGGA
TGAGCTTGGGAAATCTGCCTTACTGCTGAGCTGTGAACAACGTGGAGGCTACCTTGGCTCTGCTG
AAAAATGGAGCCAACAAGGACATGCAGGACAGCAAGGAAGAGACGCCGCTGTTCTTGGCCGCTCGGGAGG
GCAGCTATGAGGCTGCCAAGCTGCTGCTGGATCATCTCGCAACCGGGAGATCACAGATCACTTGGACAG
GCTGCCCGGGACGTGGCCAGGAGCGGCTGCACCAGGACATTGTGCGGTTGCTGGACCAGCCAGTGA
CCTCGAAGTCCCTCTGGTCCCCATGGCTTAGGGCCATTGCTCTGCCACCAGGGGCTTCCCTTCTGGCC
TCAAAGCGGTGCAGTCTGGGACCAAGAAGAGCAGGAGGCCACCTGGCAAGACCGGCTGGGGCCACAGGG
AACTCGTGGTGGGGCAAGAAGCTGACACTAGCCTGTCCAGGACCTCTGGCAGACAGCTCTGTCACTG
TCACCGGTGGACTCTCTGGACTCACACGGCTTTTCAGTGGGCCCCCTGCTTCCCTGGAGGCTTCCCT
TGGAGGGCCCTATGCCACCACGGCCACCGCGTGTCTTGGCACAGCTAGGCGCAAGTAGGGCGGGTCC
TCTGGGGCGCCAGCCTCCTGGGGCTGTGTGCTCAGCTTTGGTCTGCTCAATCCTGTAGCTGTTCCCTC
GACTGGGCCAGGCTGCCTCCACCTGCCCTCCAGGGCCCTCATTCTGCTGCCCTGGCTCCGGGACCCC
AGTTGCTCAACCCAGGAGCCCCAGTTTCTCCCAAGAGCGGCCCCACCCTACCTGGTGTCCAGGACA
TGGAGAGGAATATCCTGCAGCAGGAACCCGAGTAGCCCCACCAAGGCCGCTTCTGCGGGTCCCAGC
GAGCATCCTTATTTGACCCGCTCCTGAGTCCCAGAGCACTGGGCCAGCCATCCCCCATCCCTCT
CAGACTGGTCTGACTCAACACCTAGCCCAGCAACTGCTACCAATGCCACAGCCTCTGGAGCCCTGCCTGC
TCAGCCACACCCATATCTGTTCCCTCCCTCAGTCCCAGACTCAGCTGGGACCCCAACCAGAAGTT
ACCCCAAGAGGCAGGTGATGGCC

ACGCGTACGCGGCCGCTCGAGCAGAACTCATCTCAGAAGAGGATCTGGCAGCAAATGATATCCTGGATT
ACAAGGATGACGACGATAAGGTTTAA

Protein Sequence: >MR212149 representing NM_008716
 Red=Cloning site Green=Tags(s)

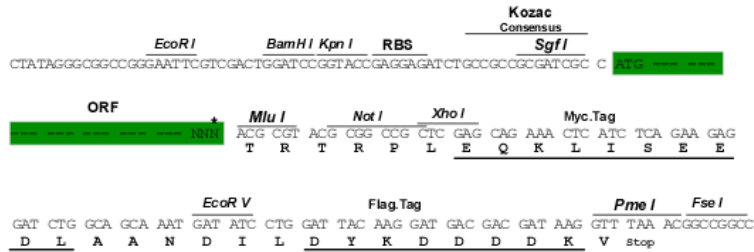
MGLGARGRRRRRLMALPPPPPMRALPLLLLLAGLGAAAPPCLDGLSPCANGGRCTHQQPSLEAACLCPL
 GWVGERCQLEDPCHSGPCAGRGVCQSSVAVGTARFSCRCLRGFQGPDCSQPDPCVSRPCVHGAPCSVGPD
 GRFACACPPGYQGQSQSDIDECSRGTTCRHGGTCLNTPGSFRQCQPLGYTGLLCENPVVPCAPSPCRNG
 GTCRQSSDVITYDCACLPGFEGQCEVNVDDCPGHRCLNGGTCVDGVNNTYNCQPPPEWTGQFCTEDVDECQ
 LQPNACHNGGTFCNLLGGHSCVCVNGWTGESCSQNIIDDCATAVCFHGATCHDRVASFYCACPMGKTGLLC
 HLDDACVSNPCHEDAICDTPVSGRAICTCPPGFTGGACDQDVDECSIGANPCEHLGRCVNTQGSFLCQC
 GRGYTGPRCETDVNECLSGPCRQATCLDRIGQFTICMAGFTGTyceVDIDEQSSPCVNGGVCKDRVN
 GFSCTCPSGSGSMCQLDVDECASTPCRNGAKVDQPDGYEERCAEGFEGTLCERNVDDCSPDPCHHGRC
 VDGIAFSACAPGYTGIRCESQVDECRSQPCRYGGKCLDLVDKYLRCRPPGTTGVNCEVNIIDDCASNPC
 TFGVCRDGINRYDCVCQPGFTGPLCNVEINECASSPCGEGGSCVDGENGFHCLCPPGSLPPLCLPANHPC
 AHKPCSHGVCHDAPGGFRVCPEPGWSGPRCSQSLAPDACESQPCQAGGTCTSDGIGFRCTCAPGFQGHQC
 EVLSPCTPSLCEHGGHCESDPDRLTVCSCPPGWQGPCRQDQVDEACAGASPCGPHGTCTNLPGNFRICHR
 GYTGPFCDQDIDDCDNPCLHGGSCQDGVGSFSCSCLDGFAGPRCARDVDECLSSPCGPGTCTDHVASFT
 CACPPGYGGFHCEIDLDCSPSSCFNGGTCVDGVSSFSCLCRPGYTGTHCQYEADPCFSRPLHGGICNP
 THPGFECTCREGFTGSQCQNPVDWCSQAPCQNGGRCVQTGAYCICPPGWSGRLCDIQSLPCTEAAAQMGV
 RLEQLCQEGGKCIDKGRSHYCVCEPGRGTGSHCEHEVDPCAQPCQHGGRGCRGYMGVYCECPAGYAGDSC
 EDNIDECASQPCQNGGSCIDL VARYLCSCPPGTGLVLCINEDDCDLGPSLDSGVQCLHNGTCVDLVGGF
 RCNCPGTYGLHCEADINECRPGACHAAHTRDCLQDPGGHFRVCVHPGFTGPRCQIALSPCESQPCQHG
 QCRHSLGRGGGLTFTCHCVPPFWGLRCERVARSCRELQCPVIGPCQQTARGPRCACPPGLSGPSCRVSRA
 SPSGATNASCASAPCLHGGSCLPVQSVVFFRCVCAPGWGGPRCETPSAAPEVPEEPRCPRAACQAKRGDQ
 NCDRECNTPGCGWDGGDCSLNVDDPWRQCEALQCWRLFNNRCDPACSSPACLYDNFDCYSGGDRDTCNP
 VYEKYCADHFADGRCDQGCNTEECGWDGLDCASEVPALLARGVLVLTVLLPPEELLRSSADFLQRLSAIL
 RTSLRFRDLARGQAMVFPYHRSPGSESRRVRELGPEVIGSVVMLEIDNRLCLQSAENDHCFDAQSAAD
 YLGALSAVERLDFPYPLRDVRGEPLAEQSVPLPLLVAGAVFLLIIFILGVMVARRKREHSTLWFPEG
 FALHKDIAAGHKRRREPVGQDALGMKNMAKGESLMGEVVDLNDSECPEAKRLKVEEPMGAEPEDCRQ
 WTQHHLVAADIRVAPATALTPPQGDADAGVDVNVVRGPDGFTPLMLASF CGGALEPMPAEDEADDTAS
 IISDLICQGAQLGARTDRTGETALHLAARYARADAAKRLLDAGADTNAQDHSGRTPHTAVTADAQGVFQ
 ILIRNRSTDL DARMADGSTALILAARLAVEGMVEELIASHADVNAVDELGKSALHWAANNVEATLALL
 KNGANKDMQDSKEETPLFLAAREGSYEAAKLLLDHLANREITDHLDRLPDVAQERLHQDIVRLLDQPSG
 PRSPSGPHGLGPLLCPGAFPLPGLKAVQSGTKSRRPPGKTGLGPQGTGRGKTLACGPLADSSVTL
 SPVDSLSPRPFSGPPASPGGFLEGPYATTATAVSLAQLGASRAGPLGRQPPGGCVLSFGLLNPVAVPL
 DWARLPPPAPPGPSFLLPLAPGQLLNPGAPVSPQERPPPYLAAPGHGEEYPAAGTRSSPTKARFLRVPS
 EHPYLTPSPESPEHWASPSPPSLSDWSDSTPSPATATNATASGALPAQPHPI SVPSLPQSQTQLGPQPEV
 TPKRQVMA

TRTRPLEQKLI SEEDLAANDILDYKDDDDKV

Restriction Sites: SgfI-MluI

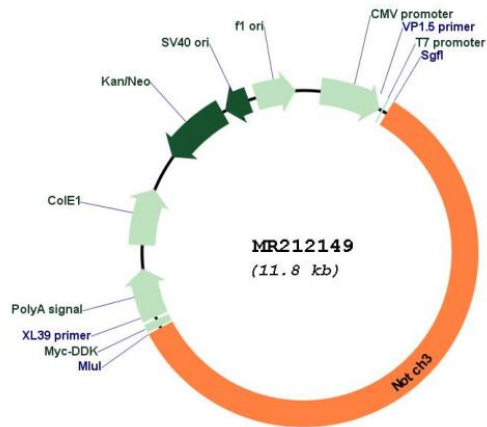
Cloning Scheme:

Cloning sites used for ORF Shuttling:



* The last codon before the Stop codon of the ORF

Plasmid Map:



ACCN:

NM_008716

ORF Size:

6954 bp

OTI Disclaimer:	<p>Due to the inherent nature of this plasmid, standard methods to replicate additional amounts of DNA in E. coli are highly likely to result in mutations and/or rearrangements. Therefore, OriGene does not guarantee the capability to replicate this plasmid DNA. Additional amounts of DNA can be purchased from OriGene with batch-specific, full-sequence verification at a reduced cost. Please contact our customer care team at custsupport@origene.com or by calling 301.340.3188 option 3 for pricing and delivery.</p> <p>The molecular sequence of this clone aligns with the gene accession number as a point of reference only. However, individual transcript sequences of the same gene can differ through naturally occurring variations (e.g. polymorphisms), each with its own valid existence. This clone is substantially in agreement with the reference, but a complete review of all prevailing variants is recommended prior to use. More info</p>
OTI Annotation:	This clone was engineered to express the complete ORF with an expression tag. Expression varies depending on the nature of the gene.
Components:	The ORF clone is ion-exchange column purified and shipped in a 2D barcoded Matrix tube containing 10ug of transfection-ready, dried plasmid DNA (reconstitute with 100 ul of water).
Reconstitution Method:	<ol style="list-style-type: none"> 1. Centrifuge at 5,000xg for 5min. 2. Carefully open the tube and add 100ul of sterile water to dissolve the DNA. 3. Close the tube and incubate for 10 minutes at room temperature. 4. Briefly vortex the tube and then do a quick spin (less than 5000xg) to concentrate the liquid at the bottom. 5. Store the suspended plasmid at -20°C. The DNA is stable for at least one year from date of shipping when stored at -20°C.
RefSeq:	NM_008716.3
RefSeq Size:	7943 bp
RefSeq ORF:	6957 bp
Locus ID:	18131
UniProt ID:	Q61982
Cytogenetics:	17 17.37 cM
MW:	244.2 kDa
Gene Summary:	<p>Functions as a receptor for membrane-bound ligands Jagged1, Jagged2 and Delta1 to regulate cell-fate determination. Upon ligand activation through the released notch intracellular domain (NICD) it forms a transcriptional activator complex with RBPJ/RBPSUH and activates genes of the enhancer of split locus. Affects the implementation of differentiation, proliferation and apoptotic programs (By similarity). May play a role during CNS development.[UniProtKB/Swiss-Prot Function]</p>