

Product datasheet for MR212146

Nkx6-1 (NM_144955) Mouse Tagged ORF Clone

Product data:

Product Type: Expression Plasmids
Product Name: Nkx6-1 (NM_144955) Mouse Tagged ORF Clone
Tag: Myc-DDK
Symbol: Nkx6-1
Synonyms: Nkx6.1; NKX6A
Mammalian Cell Selection: Neomycin
Vector: pCMV6-Entry (PS100001)
E. coli Selection: Kanamycin (25 ug/mL)
ORF Nucleotide Sequence: >MR212146 representing NM_144955
 Red=Cloning site Blue=ORF Green=Tags(s)

TTTTGTAATACGACTCACTATAGGGCGGCCGGAATTCGTCGACTGGATCCGGTACCGAGGAGATCTGCC
 GCC**CGCATCGCC**

ATGTTAGCTGTGGGGCGATGGAGGGCCCTCGGCAGAGCGGTTCTGCTCAGCAGCCCGCCCTGGCCG
 CCCTGCACAGTATGGCCGAGATGAAGACCCCGCTACCCCGCCGTTATCCCCCGTGCCACCGGGCC
 CCCCTCCTCCTCGTCTCGTCTCCTCGTCTCGTCCGCTCCACCTTTGGGCTCACATAACCCGGG
 GGCTTGAAGCCCGGCCGCGGGGGCCCTCTCGTCCCTGGCAGTCCCCGCAGCAGCTTCGGCGGCCA
 CCCACACGGCATCAACGACATCCTGAGCCGGCCCTATGCCGGTGGCCTCGGGGGCCGCCCTGCCCTC
 CGCCTCGCCCTCCGGGTCTTCTCCTCCTCCTCCTCGTCCGCTCCGCCACCTCGGCCTCTGCGCGGCC
 GCCGCCCGCTGCTGCTGCCGCGCTGCCGCCTCGTCCCGCTGGGCTGCTGGCCGGCCTGCCCGCT
 TCAGCAGCCTGAGCCCTCCGCCACCGCCCGCCGGGCTCTACTTTAGCCCCAGCCCGCGGCTGTGGCCG
 CGTGGGCGGTACCCCAAGCCCTGGCCGAGCTGCCGGTCCGACGCCCATCTTCTGGCCGGAGTGATG
 CAGAGTCCGCGTGGAGGACGCGCCCTTGCCTGTACCCCATCAAGGATCCATTTGTTGGACAAAG
 ATGGGAAGAGAAAACACACCAGACCCACGTTCTCTGGACAGCAAATCTTCGCCCTGGAGAAGACTTTCGA
 ACAAACGAAGTACTTGGCAGGACCAGAGAGACGCTTGGCCTATTCTCTGGGATGACGGAGAGTCAG
 GTC AAGGTCTGGTTCCAGAACCAGGACCAAGTGGAGAAAGAAGCAGCAGCCGAGATGCCACCGGCCA
 AGAAGAAGCAGGACTCGGAGACCGAGAGGCTCAAGGGGACTTCGGAGAATGAGGAGGATGACGACGATTA
 CAACAAACCTCTGGACCCGAACCTCTGACGACGAGAAAACTCACTCAGCTGCTGAAAAAGCAGAAATCGAGC
 GGTGGCAGCCTCTGCTGCACGCGTCGGAGGCCGAGGGCTCGTCC

AG**CGGACCG**ACGCGTACGCGCCGCTCGAGCAGAACTCATCTCAGAAGAGGATCTGGCAGCAAATGATATCC
 TGGATTACAAGGATGACGACGATAAGGTTTAA



[View online »](#)

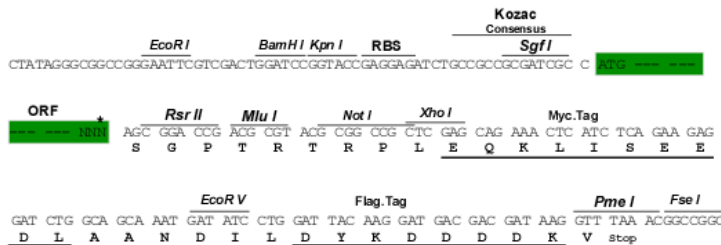
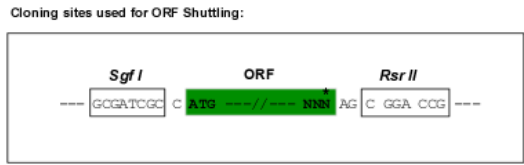
Protein Sequence: >MR212146 representing NM_144955
 Red=Cloning site Green=Tags(s)

MLAVGAMEGPRQSAFLSSPPLAALHSMAMKTPLYPAAYPLPTGPPSSSSSSSSSSSSPPLGSHNPG
 GLKPPAAGGLSSLGSPQQLSAATPHGINDILSRPMPVASGAALPSASPSGSSSSSSSSASATSASAAA
 AAAAAAAAAAASPAGLLAGLPRFSSLSPPPPPGLYFSPSAAVAAVGRYPKPLAELPGRTPIFWPGVM
 QSPWRDARLACTPHQGSILLDKDGKRKHTRPTFSGQQIFALEKTTFEQTKYLGPERRARLAYS LGMTESQ
 YKVFQNRRTKWRKHAEMATAKKKQDSETERLKGTSENEEDDDYDKPLDPNSDDEKITQLLKKHKSS
 GGSLLLHASEAEGSS

SGPTRRRL**EQKLI**SEEDLAANDILDYKDDDDKV

Restriction Sites: SgfI-RsrII

Cloning Scheme:



* The last codon before the Stop codon of the ORF

ACCN: NM_144955

ORF Size: 1095 bp

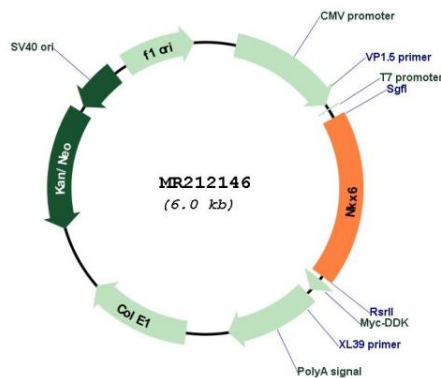
OTI Disclaimer: Due to the inherent nature of this plasmid, standard methods to replicate additional amounts of DNA in E. coli are highly likely to result in mutations and/or rearrangements. Therefore, OriGene does not guarantee the capability to replicate this plasmid DNA. Additional amounts of DNA can be purchased from OriGene with batch-specific, full-sequence verification at a reduced cost. Please contact our customer care team at custsupport@origene.com or by calling 301.340.3188 option 3 for pricing and delivery.

The molecular sequence of this clone aligns with the gene accession number as a point of reference only. However, individual transcript sequences of the same gene can differ through naturally occurring variations (e.g. polymorphisms), each with its own valid existence. This clone is substantially in agreement with the reference, but a complete review of all prevailing variants is recommended prior to use. [More info](#)

OTI Annotation: This clone was engineered to express the complete ORF with an expression tag. Expression varies depending on the nature of the gene.

Components:	The ORF clone is ion-exchange column purified and shipped in a 2D barcoded Matrix tube containing 10ug of transfection-ready, dried plasmid DNA (reconstitute with 100 ul of water).
Reconstitution Method:	<ol style="list-style-type: none"> 1. Centrifuge at 5,000xg for 5min. 2. Carefully open the tube and add 100ul of sterile water to dissolve the DNA. 3. Close the tube and incubate for 10 minutes at room temperature. 4. Briefly vortex the tube and then do a quick spin (less than 5000xg) to concentrate the liquid at the bottom. 5. Store the suspended plasmid at -20°C. The DNA is stable for at least one year from date of shipping when stored at -20°C.
RefSeq:	NM_144955.2 , NP_659204.1
RefSeq Size:	1808 bp
RefSeq ORF:	1098 bp
Locus ID:	18096
UniProt ID:	Q99MA9
Cytogenetics:	5 E4- E5
MW:	38.2 kDa
Gene Summary:	Transcription factor which binds to specific A/T-rich DNA sequences in the promoter regions of a number of genes. Required for the development of insulin-producing beta cells in the islets of Langerhans at the secondary transition (PubMed:11076772). Involved in transcriptional regulation of the insulin gene. Together with NKX2-2 and IRX3, restricts the generation of motor neurons to the appropriate region of the neural tube. Belongs to the class II proteins of neuronal progenitor factors, which are induced by SHH signals. [UniProtKB/Swiss-Prot Function]

Product images:



Circular map for MR212146