

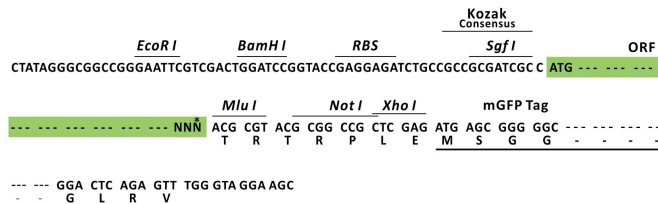
Product datasheet for MR212134L4

Ghrl (NM_021488) Mouse Tagged Lenti ORF Clone

Product data:

Product Type:	Expression Plasmids
Product Name:	Ghrl (NM_021488) Mouse Tagged Lenti ORF Clone
Tag:	mGFP
Symbol:	Ghrl
Synonyms:	2210006E23Rik; Gh; Ghr; m46; MT; MTLRP; MTLRPAP
Mammalian Cell Selection:	Puromycin
Vector:	pLenti-C-mGFP-P2A-Puro (PS100093)
E. coli Selection:	Chloramphenicol (34 ug/mL)
ORF Nucleotide Sequence:	The ORF insert of this clone is exactly the same as(MR212134).
Restriction Sites:	SgfI-MluI
Cloning Scheme:	

Cloning sites used for ORF Shuttling:



* The last codon before the Stop codon of the ORF.

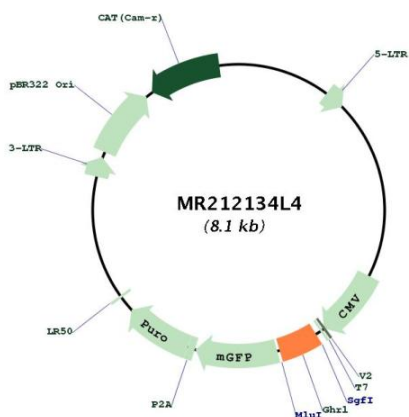
ACCN:	NM_021488
ORF Size:	351 bp



[View online »](#)

OTI Disclaimer:	The molecular sequence of this clone aligns with the gene accession number as a point of reference only. However, individual transcript sequences of the same gene can differ through naturally occurring variations (e.g. polymorphisms), each with its own valid existence. This clone is substantially in agreement with the reference, but a complete review of all prevailing variants is recommended prior to use. More info
OTI Annotation:	This clone was engineered to express the complete ORF with an expression tag. Expression varies depending on the nature of the gene.
Components:	The ORF clone is ion-exchange column purified and shipped in a 2D barcoded Matrix tube containing 10ug of transfection-ready, dried plasmid DNA (reconstitute with 100 ul of water).
Reconstitution Method:	<ol style="list-style-type: none">1. Centrifuge at 5,000xg for 5min.2. Carefully open the tube and add 100ul of sterile water to dissolve the DNA.3. Close the tube and incubate for 10 minutes at room temperature.4. Briefly vortex the tube and then do a quick spin (less than 5000xg) to concentrate the liquid at the bottom.5. Store the suspended plasmid at -20°C. The DNA is stable for at least one year from date of shipping when stored at -20°C.
RefSeq:	NM_021488.4
RefSeq Size:	527 bp
RefSeq ORF:	354 bp
Locus ID:	58991
UniProt ID:	Q9EQX0
Cytogenetics:	6 52.84 cM
Gene Summary:	This gene encodes a preproprotein that undergoes proteolytic processing to yield two bioactive peptides, ghrelin and obestatin. The hormone ghrelin plays a role in enhancing appetite and has numerous other biological functions that include stimulating the secretion of growth hormone (somatotropin) from the anterior pituitary gland. Obestatin is thought to be a hormone that functions in decreasing appetite. Mice lacking the encoded protein develop normally and exhibit no gross anatomical abnormalities. This gene encodes distinct isoforms, some or all of which may undergo similar proteolytic processing. [provided by RefSeq, Jul 2016]

Product images:



Circular map for MR212134L4