

Product datasheet for MR212083

Zfp646 (BC068300) Mouse Tagged ORF Clone

Product data:

Product Type:	Expression Plasmids
Product Name:	Zfp646 (BC068300) Mouse Tagged ORF Clone
Tag:	Myc-DDK
Symbol:	Zfp646
Synonyms:	6820429M01
Mammalian Cell Selection:	Neomycin
Vector:	pCMV6-Entry (PS100001)
E. coli Selection:	Kanamycin (25 ug/mL)
ORF Nucleotide Sequence:	>MR212083 representing BC068300 Red=Cloning site Blue=ORF Green=Tags(s)

TTTTGTAATACGACTCACTATAGGGCGGCCGGAATTCGTCGACTGGATCCGGTACCGAGGAGATCTGCC
GCC**CGATCGCC**

ATGGAGGACATGCCCTCTCATTAGTTGCTCTGACTGTCAGCGCCACTTTCCTAACCTCCCAGAACTGG
CACGGCATCGAGAACTGCGCCATTCATCTGCTAAGCAGGACGGGGAGGAAGCCGATGGCATCCCTCACCC
CTATGGCAGTCACCCGGAGAACTTGGCCAACCATCAGAGGAACCATGAGACTCTTTTTTCCCTGTACC
ACCTGTGGCAAGGATTTTCTAATCGCTTGGCCCTCCAGAGCCATATGAGGACTCATGCTCCTGAGAGCC
ACCGAAGGCACGGCCTCCACATGCCATGGAAACCGCTCCACACCTTGGGAGTGAGACCATGGCTACTGA
CTCCTGGGGTCTGAGGCTTGGATCTGGGAAGGCTGGGAAAATCAGACGAAGTTGGTACGAGAGACACAT
GACTGGGAATCTGGAGCTGACCCAGGGACGCGTCAAGGACGTTGGGAAGATCCACCTACCAACAAAGAGC
AAGGCTTAGAAATGCAGCCAGATTCTAAAGGAGGTACGGCGGACTGGGTGCCCGCGTCAAGTTCCGAAGG
AGCATCACCACTCCCCTCCAGCGAGCAACCTTCTTAGCAATTTGGAACAGTATTTGGCTGAATCAGTA
GTGAATTCACAGAGGCCAGGAGCCACTGAGCCTCTTCTACTGAGGGGGAGCGAAAGTACAGGTGCA
GTGAGTGCGGGAAGACCTATAAGCATGCCGGGAGCCTACCAACCACCGCCAGAGTCACACTCTGGGCAT
CTACCCTTGTTCCATCTGTTTCAAGGAGTTCTCTAACCTCATGGCCCTGAAGAACCACTCGAGACTCCAT
GCCAGTATCGGCCTTACCCTGCTCCTCACTGCCCCGTCCTTTCGGCTCCCCAGGGATCTGCTGGAAC
ATCAGCAGTCCCATGAGGGCTAAAGCAGGAACAACCATGGGAAGACAAAGAGATGCCTACCACAAATGG
ACACGCAGATGAGAGGAGTTGGGGTCAAGTATCTAAAACAGGGATGTTGAATGGTCTGGGGAGCTCAGC
TCTTCTGGACAGCTAGAAGATGGCGGCTCAGAGGAATATCGACCTTTCTGTTGTGGAGACTGTGGCCGTA
CCTACCGTCATGCAGGTAGTCTCATCAACCATCGAAAAAGCCACCAACAGGTATCTACCCCTGTTCCAT
TTGTTCCAAGCAGCTATTCAATGCAGTCTGCTGAAAAACCATATTCGTGCTCATCATAGACCCCGCAA
GGAGCTGGGAAGGTGGTCAGTCATCAGTGTCTCACTGCTCTTACGTACGCCGAGAATACTCCAAAAG
TGGACGAGGTCCCCTGCCAGCCTGGACCATCGTCCCTATAAGTGAATGAGTGTGGTTCGGCTTACCG
CCACAGAGGGAGCCTGGTGAACCACCGCCACAGCCACCGGACAGGAGAGTACCAGTGTTCACCTTTGCTCT



[View online >](#)

CGAAAATACCCCAACCTTATGGCTCTGCGCAACCATGTGCGGGTACATTGCAAGGCTACACGCCGAAGTA
 CAGATCCAGGGACTGAAGGTTACCCAGCCCTGTCAAGAAAGAACAACATGATCCAGTGGGAATGGAAGC
 AGCATTCCACGGAGATGAGGAACATGCATGCAAACGTGAAGAAGAGGCCACCAAGTAAACCCCTCAATGGCA
 GATAGGACAGTGCCACAGGTGTGTAGCATTGTGGAATGTTGTTGAAGATCTCAAAAGTCTCGAACATC
 ATAGCGTGACCCACAGGGAAGGAGAAAAAGCAGGACAGACAGCACGGTGTACCAACTAGAACATTTGC
 TTGCCAAGACTGTGGCAAGAGCTATCGCCACTCAGGCAGCCTTATTAACCATAGGCAGACCCATCAGACA
 GGAGACTTCAGTTGTGGGCCTGTGCCAAGCATTCCATACCATGGCTGCGATGAAAAGCCATTTACGGC
 GTCACAGTCGGCAGTGGAACAGAAAGCGGCAGAAAGCAAGATAGTGGTACAGGGGAAGTAGCCACGCTCCC
 ACCTGGGGGCGCCTGGACCCTGAAGCTGAAAAACGACGAGGACCCAGATTCTTCCCAAGATCCTTTGGGA
 GAAAGTCTTGTGAAACTGAAGACAACCTGAAAAGGGATGGGGACTGTTTGCAGGCTGGATCTAGAGGCA
 ACGAATGTGTGCTTAAAAGGGAGGAAGCCTGTTTTCTGGGTGATAAAGAGGGCACTGAGGAAGGACTAGA
 AGAGAGAGAGGCCTGTTTCTTGACGACCTAGGCACCCAGGTGATGAGTGAATGAACTGGCTTCTGT
 GGTGGCCTCCCTGGGATGGACAGTGACCGAAGAGGGGCATCTGCCACTCTGACTCCTCTCCACCCTG
 CTGACGCTGACACTGTCTGGAAGGCCGAGCCACTCACACCTGTTCTGACTGTGGAGATTCTTTCTCCA
 TGCTGCTGGCCTGTTGAGCCATAGTCTGCCACCTCCAGGCATCTATCAATGCTCTCTGTGCCAAAG
 GAATTTGATTCTCTGCCTGCCCTTCAAGTCACTTCCAGACCCATCGGCCAGGAGAGGTAGCCTCAGCAC
 AGCCCTTCTCTGCTGCCTGTGCGGTATGATCTTCTGGGAGGACTGGCTACAGGCGTCATCTGCGCCA
 GGCTCATGGAGCTTCTGCCATGACTGAGGGCTCAGAAGAAGAGGAGGAAGGCACAGCAGAAAACAGCCTCT
 ACCCATAGTCTCCCCTGCAACTCTCAGAAGCAGAGCTGCTGAATCAACTGCAGCGTGAGGTGGAAGCTC
 TAGATGGAGCAGGTTATGGTCATATTTGTGGTTGCTGTGGTCAGACCTATGATGACTGGGGAGCCTGGA
 GCGTCACCACCAAAGTCAAAGTTCTAGCAATAGGACAGAGAATGTTCTAGCCATTTGGAAGGAGCAGGT
 GATGCAACAGAAATGGTTGCAGATCATGGCTTTGAGGGCAGGTGACCTCCGTCCTCAGAAGAAGTGGGG
 ACATAAAGTCTGAAGAGGGAGTAGGTGCCACAGTTGCAGACAGCCTTTGCATGCAGGCTGGTGAAGCTT
 TCTGGAGTCCACCCCTCGCCTTTCCAATGTAACCAAGTGTGGCAAGACCTATCGCCACGGAGGCAGCTTG
 GTAACCACCGAAAGATCCACCAGACAGGTGATTTTCATCTGTCTGTTCCCGCTGCTACCCCAATC
 TGGCTGCCTACCGAATCATCTGCGGAATCACCCCTCGCTGCAAAGGCTCAGAGCCCCAAATGGGGCCCAT
 CTCAGAAGCAGGAGGCTGCAGTGAGCCCCAGAATGCAGCAGAGGCAGGGCAGGAGCAGGCTGTCATAGGG
 CAACTCCAGGAAGAGCTTAAAGTGGAGCCCTTGGAGGAGCTGGCAGGTGTCAAAGAAGAAGTGTGGGAGG
 GGACCGCTGTAAGGAAGAGGAGCTGGAGCAGGAGTTGGAGACAGGCTGTGACTGAGGTCACCTCGGA
 GCGGCCCTTATGCTGTGAAGTGTGTGGCCGACCTACAAGCATGCTGGCAGCCTTATCAATCACCGGCAG
 AGCCACCAGACTGGCCACTTTGGCTGCCAGGCCTGCTCCAAGGGTTTCTCAAACCTCATGCTACTCAAGA
 ACCACCGCGCATCCATGCAGACCTCGACAGTCCGCTGCAGTGAGTGTGGGAAAGCCTTTCGCTGCG
 AAAGCAGCTGGCCAACCACAGCGAGTCCATGCTGAGCGACGCAGGAGTAGGGGCACCCAGAAAAGTACT
 CGTGAGGACCGGCCTTTCAGATGTGGGCAGTGTGGCCGGACTTACCGCCATGCTGGCAGTCTCATGAACC
 ACCAGTGAACCCCTGAGGCCAGCCGTTACAGCTGCCCTTCTGTTTTAAGACCTATTCCAACCGCACAGC
 CCTGAAAGACCATCAGAGGGTACATTCTGATAGTCAACAGCGGCAGCAGTCAAGTGTCCCAGAGGGCA
 GCAGCTGTACGTTGTACCTATGTGGCTGTGGCTTTTCTGGCCAGGGATCTCTAGAGCAGCATCTACAGG
 AGCATGAGGACACCAAAGTACTAGAGGTAGCCAGTGGCCAGGGAGGCCAACATGCTACAGAAGGCAGTGAAG
 GAACCTTGATGACTGGGACTGGAGGGCAGGTGAGTGGTACTGAGTACTGCAGGTGGAACATGAAACC
 AAGAGGCCTGGGGACACAGTCAAGTCCAGTAGCCAGCGTGTTCAGGAGGCACAGAATCCACACAGC
 AGGTGGGGAAAGTATGGGAGTCAAGGAGACAGAGGACAAATGAACCACAATGGTGCCTGGGTTCTTCA
 GGATCAGTTAACCAAGCCAGAAGGCAAGTTGGAAGACTGTCTCCAGGAATCCTTGTACCTCTCTGAG
 AGCCAGTCCAATGGTCTACTCTAAGATACAGGGATAGTTGGAAGGTGCTGACAGCGGCTCTCAACTCC
 AACCAAGGCCACTGCTGCAGCCAGTGTGGCAAGGCCTACTGCCAACCTGATGGCCTCTTGAACCCAG
 CATTAAATGGGAAAGACTGTCACATTTGTCTGCTGTTTCCAAAGATTCTTGAATCCTGTGACCACTGAG
 ATCCACAACCACACTACTGCCAGCGCTTGTCTGTAGTAAATGTAGCAAAGTGTGTGAGTCCCACAGTG
 AACTGGCCACACATGAAGACTCATGCTGTTGAGCACAGTCAAGTGTGAGTCAAGTGTGAGTCCCACAGTG
 AGGTCCACAGGCTGGGATGGCAGAGGTGGTCCCTCTGTTCCAGGAAAGCTCAGGAGGCCCATCAGAA
 CTTCTGGAGACCCAGAGGAGAATGGGGTGCAGCTAACGGAGGACAAGGAATACATTTCCAGCAGCTG
 AAGACAAGGAGCGTCCCTTTGCTGTGCTCAGTGTGGCGTTCATACCGCATGCCGGTAGCCTGTGAA
 CCACCAGAAGGCCACACCATTGGACTCTACCCCTGTTCCCTGTGTCCCAAACCTTCTGCCTAACCTGCTG
 TCTCTCAAGAACCACAGTCGGACCCACACGGACCCCAAGCGCTACAGTGAACATCTGTGGCAAGGCTT

TCAGAACCCTGCCCCGGCTTCAGGGCCATGGACGGGTCCATGCACCCAGGAGGGACCATTACCTGTTC
 TCATTGTCCTCGCCGCTTCGCCACCGAATCAGCTTTCTGCGACACCAGCAGCAGCACCAGGAAGAGTGG
 CCAGTGTGAGCTCAGGAGCCTCAGTGGCACCAGCAGCAAGCAGAGAGGATTCTCTACAGCCTCGCTTC
 CGAACCCCTACCCCACTGGCCTGCAGACCTCAGTCTCTCCCTC

ACGCGTACGCGGGCCGCTCGAGCAGAACTCATCTCAGAAGAGGATCTGGCAGCAAATGATATCCTGGATT
 ACAAGGATGACGACGATAAGGTTTAA

Protein Sequence:

>MR212083 representing BC068300
 Red=Cloning site Green=Tags(s)

MEDMPLSFSCSDCQRHFPNLPELARHRELRHSSAKQDGEEADGIPHPYGSHPENLANHQRNHETLFFPCT
 TCGKDFSNRLALQSHMRTHAPESHRRHGPPHMETAPHLGSETMATDSWGQRLGSGEGWENQTKLVRETH
 DWESGADPRAASGTWEDPPTKQRQGLEMQPDSKGGTADWVPAVSSEGASPLPTASNLLSNLEQYLAESV
 VNFTEAQEPTPELPTTEGERKYRCSECGKTYKHAGSLTNHRQSHTLGIYPCSIKFESNLMLKNHSRLH
 AQYRYPYHCPHCPRAFRLPRDLLEHQQSHEGLKQEQPWEDKEMPTTNGHADERSWGQLSKTGMLNGSGELS
 SSGQLEDGGSEYRPFCCGDCGRTYRHAGSLINHRKSHQTGIYPCSIKQFLNAAALKNHIRAHRHRPRQ
 GAGEGGQSSVSSTAL TSAENTPKVDEVPTASLDHRPYKCNCEGRAYRHRGSLVNHRHSHRTGEYQCSLCP
 RKYPNLMALRNHVRVHCKATRRSDPGTEGSPVVKKEQHDPVGMEEAFHGDEEHACKREEEATSNPSMA
 DRTVPQVCSICGMLFEDLKSLEHHSVTHREGEKSRDSTVSPTRTFACQDCGKSYRHSGSLINHRQTHQT
 GDFSCGACAKHFHTMAAMKSHLRRHSRQWNRROKQDSGTGEVATLPPGGAWTLKLENDPSSQDPLG
 ESPCETEDNLERDGDCLQAGSRGNECVLKREEACFLGDKEGTEEGLEEREACFLDDLGTGDECNETGFC
 GGLPGMDSDRKRGICHSDSSHPADADTVWAAAHTHTSCDCGDSFSHAAGLLSHRSCHPPGIYQCSLCPK
 EFDLSPALRSHFQTHRPGEVASQPFLLCCLCGMIFPGRTYRRHLRQAHGASAMTEGSEEEEEETAS
 THSPPLQLSEAELLNQLQREVEALDAGYGHICGCCGQTYDDLGSLEHHSQSSSNRTENVPVSHLEGAG
 DATEMVADHGFEGTIVTSVEEGDIKSEEGVGGTVADSLCMQAGESFLESHPRPFCNQCGKTYRHGGSL
 VNHRKIHQTGDFICPVCSRCYPNLAAYRNHLRNHRCKGSEPQMGPISEAGGCSEPNAAEAGQEQAIVIG
 QLQEELKVEPLEELAGVKEEVWEGTAVKEELEELELETGCQTEVTSERPFSCVCGRTYKHAGSLINHRQ
 SHQTGHFGCQACSKGFSNLMSLKNHRIHADPRQFRCSECGKAFRLRKQLANHQVHAERRRSRGTQKLT
 REDRPFRCGQCGRTYRHAGSLMNHQCNPEASRYSCPFCKTYSNRTALKDHQRVHSDSQRRRQSGCPQRA
 AA VRCTLCGCGFSGQGSLEQHLQEHEDTKLEVASGQGGQHATEGSEENLDDWGLEGRSDGTEVLQVEHET
 KRPGGHSQSPSSPACSGGTESTQVGVKVDGSDGDRGMNHNHGAWVLQDQLTKPEGKLEDTVSRNPCHLSE
 SQSNGPTLRYSWKGADSGSQLQPESHCCSQCGKAYCQPDGLLNPSINGKDCHICLLCSKEFLNPVTTE
 IHNHTTAQRFACSNCSKVCESEHSELATHMKTHAVEHSQMSGQMEKTRGPQAGMAEVGPPGPKAQEAPSE
 LPGDPEENGVPANGGQGIHFPAEDKERPFCCAQCGRSYRHAGSLLNHQKAHTIGLYPCSLCPKLLPNLL
 SLKNHSRTHTPKRYSCNICGKAFRTAARLQGHGRVHAPQEGPFTCSHCPRRFRHRISFLRHQQHQEEW
 PVSSSGASVAPAAASREDSSTASLPNPSQWPADLSLSL

TRTRPLEQKLISEEDLAANDILDYKDDDDKV

Chromatograms:

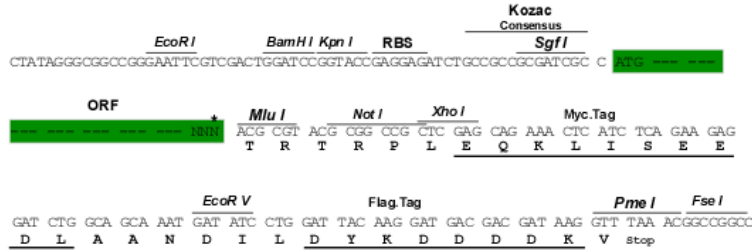
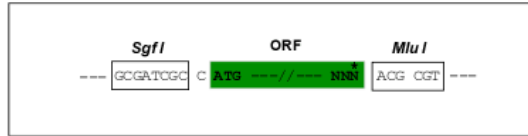
https://cdn.origene.com/chromatograms/mm9092_e03.zip

Restriction Sites:

Sgfl-MluI

Cloning Scheme:

Cloning sites used for ORF Shuttling:



* The last codon before the Stop codon of the ORF

ACCN: BC068300

ORF Size: 5364 bp

OTI Disclaimer: The molecular sequence of this clone aligns with the gene accession number as a point of reference only. However, individual transcript sequences of the same gene can differ through naturally occurring variations (e.g. polymorphisms), each with its own valid existence. This clone is substantially in agreement with the reference, but a complete review of all prevailing variants is recommended prior to use. [More info](#)
OTI Annotation: This clone was engineered to express the complete ORF with an expression tag. Expression varies depending on the nature of the gene.

Components: The ORF clone is ion-exchange column purified and shipped in a 2D barcoded Matrix tube containing 10ug of transfection-ready, dried plasmid DNA (reconstitute with 100 ul of water).

Reconstitution Method:

1. Centrifuge at 5,000xg for 5min.
2. Carefully open the tube and add 100ul of sterile water to dissolve the DNA.
3. Close the tube and incubate for 10 minutes at room temperature.
4. Briefly vortex the tube and then do a quick spin (less than 5000xg) to concentrate the liquid at the bottom.
5. Store the suspended plasmid at -20°C. The DNA is stable for at least one year from date of shipping when stored at -20°C.

RefSeq: [BC068300.1](#)

RefSeq Size: 5930 bp

RefSeq ORF: 5366 bp

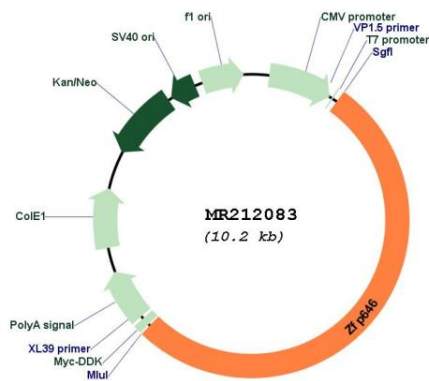
Locus ID: 233905

Cytogenetics: 7 F3

MW: 196.8 kDa

Gene Summary: May be involved in transcriptional regulation.[UniProtKB/Swiss-Prot Function]

Product images:



Circular map for MR212083