

Product datasheet for MR212074

Mast2 (BC060703) Mouse Tagged ORF Clone

Product data:

Product Type:	Expression Plasmids
Product Name:	Mast2 (BC060703) Mouse Tagged ORF Clone
Tag:	Myc-DDK
Symbol:	Mast2
Synonyms:	MAST205; Mtssk
Mammalian Cell Selection:	Neomycin
Vector:	pCMV6-Entry (PS100001)
E. coli Selection:	Kanamycin (25 ug/mL)
ORF Nucleotide Sequence:	>MR212074 representing BC060703 Red=Cloning site Blue=ORF Green=Tags(s)

TTTTGTAATACGACTCACTATAGGGCGGCCGGAATTCGTCGACTGGATCCGGTACCGAGGAGATCTGCC
GCC**CGATCGC**C

ATGGTTACTGGACTTAGTCCTCTGCTCTTCAGGAAGCTTAGTAATCCTGACATATTTGCACCCACTGGAA
AAGTTAACTCCAGCGACAACCTAGTCAGGATGACTGTAAGTTACGGAGAGGAAGCCTGGCAAGTTCTCT
GTCGGGTAAAGCAGCTGCTCCCTTGTCCAGCAGTGTACACAGCAGTGTGGGACAGGTAACCTGGCAGTCT
ACAGGAGAAGCATCAAACCTGGTTCGAATGAGAAACCAATCCCTTGGACAGTCTGCACCTCCCTTACGG
CTGGCTGAAGGAATTGAGCCTTCCAAGGAGAGGCAGCTTTTGTGCGACAAGTAACCGCAAGAGCTTGAT
TGTAACCTCCAGCACATCACCTACGCTACCAAGGCCACACTCCCCACTCCATGGCCACACAGGTAACAGT
CCCTTGGACAGCCCCGGAATTTCTCTCAAATGCTCCTGCTCACTTTTCTTCTGCTTCTGCCCGTAGCC
ATGGCCACAGAACAGACAGGACTGATGGACGGCGCTGGTCTTTGGCCTCGTTGCCTTCTTCAGGCTATGG
AACCAACTCCTAGCTCTACAGTCTTTCATCATGTTCCCTCACAAGAAAAGCTTCATCAGTTACCTTTT
CAGCCAACAGCTGATGAACACTTTCTGACGAAGCATTTTAGCACAGAAAACGTACCAGATGAGGAGG
GACGTCGGTCCCCAGCCATGCGGCCCGTTCCCGCAGCCTCAGTCTGGACGGTCCCCAGTTTCTTTGA
CAGTGAATAATAATGATGAATCATGTGTACAAGAAAAGATTCCCAAGGCCACTGCACAGATGGAAGAG
CGACTAGCTGACTTCATTTCTCTAACACTCCAGATAGTGTGTTGCCCTTGGCAGATGGAGCACTAAGCT
TTATTCATCATCAGGTGATTGAGATGGCCGAGACTGCCTGGATAAATCTCGGAGTGGCCTCATTACGTC
ACACTATTTCTATGAACCTCAAGAGAATTTGAAAAGCTTCTGCAAGATGCTCACGAACGCTCAGAAAGC
TCAGATGTAGCCTTTGTGATACAGCTGGTAAAAAGTTGATGATCATCATTGCTCGCCAGCTCGCCTCC
TGAATGCCTGGAGTTTGACCCTGAAGAATTTTACCACCTGTTAGAAGCAGCTGAAGGTCATGCCAAAGA
GGGACATGGAATTAATGTGACATTCCCCGCTACATCGTTAGCCAGCTGGGCCTAACTCGGGATCCCTTG
GAGGAAATGGCCAGTTGAGCAGCTATGACAGTCCAGATACTCCAGAGACAGATGATTGAGTTGAGGTC
GTGGGTATCTCAGCCATCTCAGAAGACCCCTCTGAAGAGGACTTTGAAACCATTAAGCTCATCAGCAA
TGCGCCTATGGGCTGTCTTTCTGGTGGGCACAAGTCCACGGCAGCGCTTTGCAATGAAGAAGATT



[View online »](#)

AATAAGCAAACCTAATCCTACGGAACCAGATCCAGCAAGCATTGTGGAACGCGACATACTGACTTTCCG
 CTGAAAACCCCTTTGTGGTCAGCATGTTCTGCTCCTTTGAGACCAAGCGTCACTTATGCATGGTATGGA
 ATACGTAGAAGGGGAGACTGTGCCACTCTGCTCAAGAACATCGGGGCCCTACCTGTGGACATGGTACGC
 CTGACTTTGCGGAACTGTGCTGGCTTTGGAATACTTACACAACACGGCATCGTGCACCGTGACCTCA
 AGCCTGACAACCTTCTGATTACATCCATGGGACACATCAAACCTCACTGACTTTGGACTTTCTAAAATCGG
 CCTCATGAGTTTGACAACCACTTGTATGAGGGTCATATTGAAAAGGATGCCCGGAGTTCTAGACAAG
 CAGGTATGCGGGACCCCGGAATACATAGCACCTGAGGTGATCCTGCGTCAGGGATATGGGAAGCCAGTGG
 ACTGGTGGGCCATGGGCATAATCCTGTATGAGTTCCTGGTGGGTTGCGTCCCTTTCTTTGGAGACACTCC
 GGAGGAGCTCTTTGGCAAGTGATCAGTGATGAGATCGTGTGGCCGAAGGTGATGACGCGCTTCCCCCA
 GATGCCCAAGACCTCACTTCAAACCTGTTTCATCAGAATCCACTAGAAAGACTGGGCACAAGTAGTGCTT
 ATGAAGTGAAGCAGCACCCATTCTTTCATGGGTCTGGACTGGACAGGACTTCTACGGCAGAAGGCTGAATT
 TATACCTCAGCTGGAGTCAGAGGATGACACCAGCTACTTTGATACCCGTTTCAAGACGATACCACCATGTG
 GACTCTGAGGATGAGGAGGAAGTGAAGTGGATGGCTGCCTTGAGATTGCGCAGTTTTCTCCTGCTCTC
 CAAGTTTACAGCAAGTTTACAGTAGCATGGAACGGCTTTCCCTGCTTGAGGAACGCCGGACACCACCTCC
 AACCAAGCGCAGCCTCAGTGAGGAAAAGGAAGTCACTCAGACGGCTTGGCAGGACTGAAGGGCCGAGAT
 CGCAGCTGGGTGATTGGTCCCTGAGATATTACGGAAGCGGTTATCTGTGTCCGAGTATCCCACACAG
 AGAGTGATTTCGAGTCTCCAATGACAGTGCGACATCGGTGTTTCAAGCCTCCAGATGGGCCTCATTGCC
 TGAGGAGACTAGTAGCACCCCTCGAAGCAACAACAGGAAGGTATATGGGTCTCATTCCCCATCTGGA
 GAGGGTCTATAGGCTGTTTCTGAACGACCGTTGGAGAGGCAACTGAAGCTGGATGAGGAGCCTCCTG
 GCCAAAGCAGTCGGTGTGCCCAGCCCTGGAGACACGAGGCCGTGGGACCCCTCAGTAGCTGAGGAAGC
 TACAGCCAAAGCCATCAGCGACCTAGCTGTGCGTAGGGCCCGTACCAGGCTGCTCTTGGGACTCTATA
 GAGAAGCGCACCACTCGCCCTGTCAACAAGTAATCAAGTCAGCCTCAGCTACGGCCCTTCCCTCCTCA
 TTCCTTCAAGAACCAATGCTGCTCACCATTGGCCAGCCCTATGTCCCCACATTCCCACTTCCCAATCC
 ATCATCCAGGGACTCTTCTCCAAGCAGGACTTCTTGGCAGCCCTTGGCAGCTTGAGGCCTCCCATCATC
 ATCCACCAGCTGGCAAGAAGTATGGCTTACCCTGCGGGCCATTGAGTCTACATGGGTGACACTGATG
 TCTACACCGTACACCACATGGTGTGGCATGTGGAGGATGGTGGTCCAGCCAGTGAAGCAGGGCTTCGTCA
 GGGTGACCTCATCACCATGTCAATGGTGGCCTGTGCATGGGCTAGTCCACACAGAAGTGGTGGAGCTG
 GTTCTGAAGAGTGGAAACAAGGTATCAATTTCAACAACCTCCCTGGAGAACACGTCAATCAAAGTGGGGC
 CAGCTAGGAAAGGCAGCTATAAAGCCAAGATGGCCGAAGGAGCAAAACGGAGCAAAGGCAAGGATGGGCA
 AGAAAGCCGAAAAGAAGCTCCCTATTCGGAAAATCACAAAGCAGGCCCTCTTGTCCACACCAGCCGC
 AGCCTTTCTTCCCTTAACCGCTCCTTGTATCAGGGGAGAGTGGTCCAGGCTCTCCACACACAGCCACA
 GCCTCTCTCCAGATCTCCTCCTCAGGGATACCGGGTAGCCCCAGATGCTGTGCACTCAGGAGGGAATTC
 CTCGACAGCAGCTCTCCAGCTCCAGTGTGCCAGTTTCTCCTGCTGGCTCTGGACATACACGGCCAGC
 TCTCTTACGGTCTGGCACCCAAGCTCCAACGCCAATACCCTCACCACGGCGCAAGTCAAGCAGGCGAGCA
 TCCCACTGTACCGTTGGCCACACCCCTTCCCAACCAGCAACGGCAGCTTACCCTCAGCGTTCCCATC
 ACCCTTGTCTGGCCATGGGTCTCAGTCTTTCTACCAAACCTTCACTTGTCTCCTCCGCTAGGTAGGCG
 CTCTCACGGCCCAAGAGTGCAGAGCCACCCCGCTCTCCCTACTTAAGAGGGTGCAGTCTGCTGAGAAGC
 TGGTGAACCTAAAGAAGGAACTGACACCCAGGGAAGCCAGCCCTCTGGAGGTAGTTGGAACCAAGAAGTGTG
 CTATCCGGGAAAAGGGCCACTTCCAGGAAAAGGGGTACTGCAGCCTGCTCCTTACGGGCCCTTGGGACCC
 TACGGCAGGATCGAGCTGAACGCGGTGAGTCACTGCAAAAAACAAGAAGCAATCCGGGAAGTGAAGTCTCTC
 AGAAGATGACACTGATGAGGAGCCTGAGAACAGCCAGGCCACACAGGAGCCAAGATTGTCCCCCAACCCA
 GAAGCAAGCCACAATCTACTCCCTAAAGGTTTCAAGGAGGGTACAGAAGAGGACACTTTCTTGCACAGGG
 ATCTAAAGAAGCAGGGCCCTGTACTCTCAGGTCTAGTGACAGGGGCCACACTAGGCTCCCCCGAGTAGA
 CGTTCTGGGCTCTCCCAAGGAAGCTCAGCAGGCCACAAGCCTTTGAGGAAGCTACCAACCCCTTACAA
 GTCCCTAGCCTGAGCAGGTCTGGACCCACAAGCCCAACCCCTCTGAAGGCTGCTGGAAGGCCAGCACC
 TCCACACACAGGCACTAACTGCATTTGTCCAGCTTTTTCAGAACTTACCCTACCGGTTGTTCTGCTGC
 CACTCCACTCTGGAAGCCAGGGACATGGTCTGGAATTCCTTATTGAGGGTCCAGACAGAGCATCC
 ACGAACAAAGACATAACAAGGAAAGGTGAACCAGCTAACTCCCAAGATACGAATACCACGGTCCCAAATC
 TTCTGAAGAACCTGTCTCCTGAGGAGGAGAAGCCACAGCCACCAAGTGTGCCTGGGCTGACCCATCCGCT
 TCTTGAGGTCCCCAGCCAGAAGTGGCCATGGGAGTCTGAATGTGAACAAATGGAGAAAGAAGAACCATCC
 CTGAGCATCACCGAAGTGCCTGATTCTCAGGGCAGAGGAGGCAGGACATTCATGCAGAGCCACCCCC

TGAGCCCAGAAACCCGGCCAGCCTGCTCTGAAAAGCCAAGAAGCTTGGGGGCCAGCAAGATCATCAGGA
CTTAGACTGACATCAGATGAGCTCTTAAAGCAAACC

ACGCGTACGCGGCCGCTCGAGCAGAAACTCATCTCAGAAGAGGATCTGGCAGCAATGATATCCTGGATT
ACAAGGATGACGACGATAAGGTTTAA

Protein Sequence:

>MR212074 representing BC060703
Red=Cloning site Green=Tags(s)

MVTGLSPLLFRKLSNPDI FAPTGVKVLQRQLSQDDCKLRRGSLASSLSGKQLLPLSSSVHSSVGVQVTWQS
TGEASNLVRMRNQLGQSAPSLTAGLKEKLSLPRRGSFCRTSNRSLIVTSSTSPTLRPHSPLHGHTGNS
PLDSPRNFSPNAPAHFSFVPARSHGHRDTRDGRRWLASLPSSGYGTNTPSSTVSSSCSSQEKHLQLPF
QPTADELHFLTKHFSTENVPDEEGRSPAMRPRSRLSPGRSPVSFDSEIIMNHVYKERFPKATAQMEE
RLADFISSNTPDSVPLADGALSFIIHQVIEMARDCLDKSRSLITSHYFYELQENLEKLLQDAHERSES
SDVAFVIQLVKKLMII IARPARLLECLFDPPEFYHLLAAEGHAKGEGHIGKCDIPRYIVSQGLTRDPL
EEMAQLSSYDSDPTPETDSDVEGRGVSQPSQKTPSEEDFETIKLISNGAYGAVFLVRHKSTRQRFAMKKI
NKQNLILRNQIQAFVERDILTF AENPFVYSMFCSFETKRHLCMVMEYVEGGDCATLLKNIGALPVMVR
LYFAETVLAL EYLHNYGI VHRDLKPDNLLITSMGHKLTDFGLSKIGLSLTTNL YEGHIEKDAREFLDK
QVCGTPEYIAPEVILRQGYGKPDWAMGIILYEFVGCVPFFGDTPEELFGQVISDEIVWPEGDDALPP
DAQDLTSKLLHQNPLERLGTSSAYEVKQHPFFMGLDWTGLLRQKAEFIPQLESEDDTSYFDRSERYHHV
DSEDEEEVSEDGCL EIRQFSSCSPRF SKVYSSMERLSLLEERTTPPTKRSLSEEKEDHSDGLAGLKGRD
RSWVIGSPEILRKRLSVSESSHTESDSSPPMTRHRCSGLPDGPHCEETSTPRKQQQEGIWVLI PPSG
EGSSRPVPERPLERQLKLD EEPGQSSRCCPALETRGRGTPQLAEATAKAI SDLAVRRARHRLLSGDSI
EKRTTRPVNKVIK SASATALLIPSEHHACSPASPMSPHSQQSNPSSRDSSPDRFLPALGSLRPII
IHRAGKKYGFLLRAIRVYMGD TDVYTVHMHVWHVEDGGPASEAGLRQGDLI THVNGEPVHGLVHTEVVEL
VLKSGNKVSI STPLENTSIKVG PARGSYKAKMARRSKRSKGDGQESRKRSSLFRKITKQASLLHTRS
SLSSLNRSLSSGESGPGSPTHSHLSLSPRSPPQGYRVAPDAVHSGGNSSQSSSPSSVSPSPAGSGHTRPS
SLHGLAPKLQRQYRSPRRKSAGSIPLSPLAHTPSPPATAASPQRSPSPLSGHGSQSFPTKLHLSPLGRQ
LSRPKSAEPPRSP LKRVQSAEKLAALAAAEKKLAPSRKHSLDLPHGELKKELTPREASPLEVVGTRSV
LSGKGPLPGKGVLPAPSRALGTLRQDRAERRESLQKQEAIREVDSSEDDTDEEPENSQATQEPRLSPHP
EASHNLLPKGSGEGTEEDTFLHRDLKKQGPVLSGLVTGATLGSPRVDVPGLSPRKLSRPQAFEEATNPLQ
VPSLSRSQPTSPTPSEGCKWAQHLHTQALTALCPSEL TPTGCSAATSTSGKPGTWSWKFLIEGPDRAS
TNKTITRKGEPANSQDTNTTVPNLLKNLSPEEEKPQPPSVPLTHPLLEVPSQNWPESECEQMEKEEPS
LSITEVPDSSGDRRQDIPCRAHPLSPETRPSLLWKSQELGGQDHDQLALTSDELLKQT

TRTRPLEQKLI SEEDLAANDILDYKDDDDKV

Chromatograms:

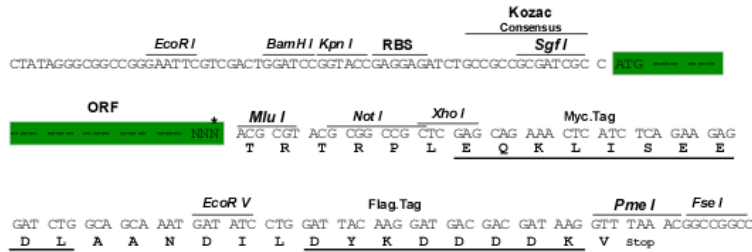
https://cdn.origene.com/chromatograms/mm9035_a02.zip

Restriction Sites:

Sgfl-MluI

Cloning Scheme:

Cloning sites used for ORF Shuttling:



* The last codon before the Stop codon of the ORF

ACCN: BC060703

ORF Size: 5217 bp

OTI Disclaimer: The molecular sequence of this clone aligns with the gene accession number as a point of reference only. However, individual transcript sequences of the same gene can differ through naturally occurring variations (e.g. polymorphisms), each with its own valid existence. This clone is substantially in agreement with the reference, but a complete review of all prevailing variants is recommended prior to use. [More info](#)
OTI Annotation: This clone was engineered to express the complete ORF with an expression tag. Expression varies depending on the nature of the gene.

Components: The ORF clone is ion-exchange column purified and shipped in a 2D barcoded Matrix tube containing 10ug of transfection-ready, dried plasmid DNA (reconstitute with 100 ul of water).

Reconstitution Method:

1. Centrifuge at 5,000xg for 5min.
2. Carefully open the tube and add 100ul of sterile water to dissolve the DNA.
3. Close the tube and incubate for 10 minutes at room temperature.
4. Briefly vortex the tube and then do a quick spin (less than 5000xg) to concentrate the liquid at the bottom.
5. Store the suspended plasmid at -20°C. The DNA is stable for at least one year from date of shipping when stored at -20°C.

RefSeq: [BC060703.1](#)

RefSeq Size: 5315 bp

RefSeq ORF: 5219 bp

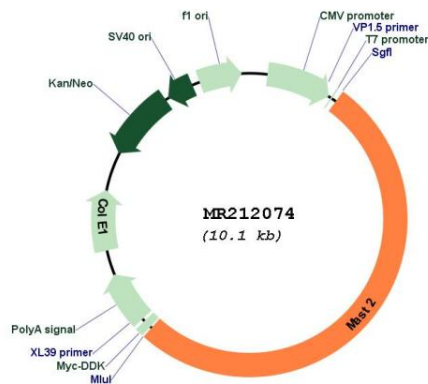
Locus ID: 17776

Cytogenetics: 4 D1

MW: 194.8 kDa

Gene Summary: Appears to link the dystrophin/utrophin network with microtubule filaments via the syntrophins. Phosphorylation of DMD or UTRN may modulate their affinities for associated proteins. Functions in a multi-protein complex in spermatid maturation. Regulates lipopolysaccharide-induced IL-12 synthesis in macrophages by forming a complex with TRAF6, resulting in the inhibition of TRAF6 NF-kappa-B activation.[UniProtKB/Swiss-Prot Function]

Product images:



Circular map for MR212074